

# Converting Colors

Hex(CE9994)

Have a look what the booklet for  
Hex(CE9994) contains.

<b>Hex(CE9994)</b> .....	3
<b><i>Conversions</i></b> .....	4
<b><i>Details</i></b> .....	6
<b><i>Harmonies</i></b> .....	11
<b><i>Previews</i></b> .....	23
<b><i>Color Blindness Simulation</i></b> .....	26
<b><i>CSS Examples</i></b> .....	29

# **Color**

**Hex(CE9994)**

# Conversions

## Conversions Part 1

<b>Format</b>	<b>Color</b>
Hex	CE9994
RGB	206, 153, 148
RGB Percent	81%, 60%, 58%
CMY	0.1922, 0.4000, 0.4196
CMYK	0.00, 0.26, 0.28, 0.19
HSL	5°, 37%, 69%
HSV	5°, 28%, 81%
XYZ	42.1901, 38.0424, 33.1362
YIQ	168.2770, 33.1930, 9.6810

# Conversions

## Conversions Part 2

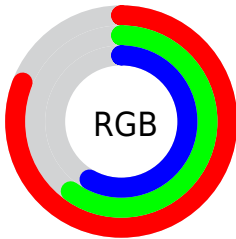
Format	Color
<b>R<sub>YB</sub></b>	206, 153, 148
Decimal	13539732
CIE <sub>Lab</sub>	68.05, 19.12, 10.39
CIE <sub>LCh</sub>	68, 21.760, 28.520
Yxy	38.0424, 0.3721, 0.3356
Android (android.graphics.Color)	4291729812 (0xFFCE9994)
YUV	168.2770, -9.9966, 33.0831
Hunter-Lab	61.6785, 14.1624, 11.3219

# Details

The Hex color **CE9994** is a light color, and the websafe version is hex **CC9999**. A complement of this color would be **94C9CE**, and the grayscale version is **A8A8A8**.

A 20% lighter version of the original color is **FFD0CA**, and **966661** is the 20% darker color. If you saturate the color by 10%, you get **CE867F**, and if you desaturate by 10%, it is **CEACA9**.

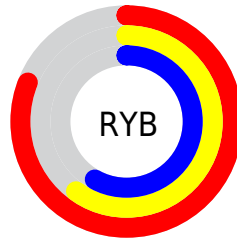
# Distribution



Red (81%)

Green (60%)

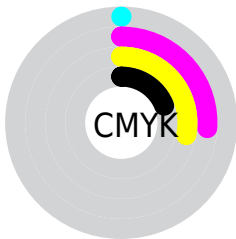
Blue (58%)



Red (81%)

Yellow (60%)

Blue (58%)

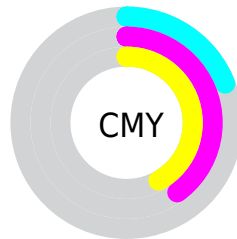


Cyan (0%)

Magenta (26%)

Yellow (28%)

Black (19%)



Cyan (19%)

Magenta (40%)

Yellow (42%)

# Brightness & Saturation Gradients

These gradients show how the Hex color CE9994 changes by changing the brightness by 10 percent. The first figure shows a shift by +10% for each color and the second figure -10%.

Similar to the brightness gradients but the following saturation gradients show a change of the Hex color CE9994 by changing the saturation by 10% instead.





CE9994



CE9994

FFFFFF



B27F7A



FFD0CA



966661



FFECE6



7C4D4A



623633



49201E



310A05



170000



000000



CE9994



CE9994

 CE867F

 CEACA9

 CE736B

 CEBFBD

 CE6156

 CED1D2

 CE4E42

 CEE4E6

 CE3B2D

 CEF7FB

 CE2818

 CEFFFF

 CE1504

 CE1200

# Harmonies

## Analogous

The Analogous color harmony consists of three colors that are next to each other on the color wheel.



CC98A8



CE9994



C69E85

# Triad

The Triadic color harmony groups three colors that are evenly spaced from another and form a triangle on the color wheel.



CE9994



8AAF91



8DA8CD

# Complementary

The Complementary color scheme is a pair of colors which are on the opposite of each other on the color wheel.



CE9994



94C9CE

# Split Complementary

Split-complementary colors differ from the complementary color scheme. The scheme consists of three colors, the original color and two neighbors of the complement color.



77ADC7



CE9994



77B1A4

# Square

The Square scheme is like the rectangle color scheme, but the four colors are evenly spaced on the color wheel.



CE9994



A0AA83



6EB1B8



A8A1C8

# Rectangle

The Rectangle color scheme consists of four colors that form a rectangle on the color wheel.



CE9994



BCA280



6EB1B8



85AACC

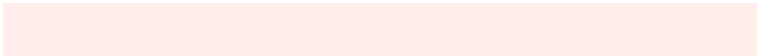


# Sweetspot

The Sweet Spot groups the original color and five complimentary colors.



CE9994



FFECEB



CE94C9



807473



000000



808080



# Same Dimension

The Same Dimension uses a secret algorithm to generate beautiful new colors.



CE9994



FFB0A8



CEB694



665D5C



A60E00



260300



# Inverse Universe

The Inverse Universe completely reimagines the original color for something new.



94C9CE



A8F8FF



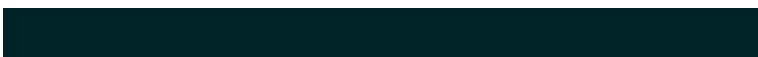
94ACCE



5C6566



0097A6

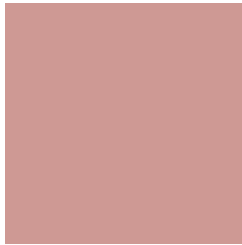


002326



# Previews

## White Background



This preview shows how the Hex color CE9994 looks on a white background.

## Color Contrast Check

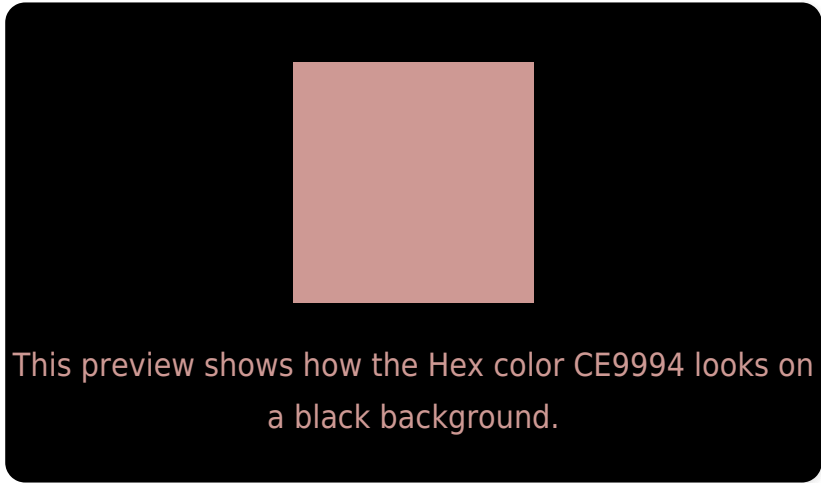
Large Text (above 18pt) WCAG AA × Fail

Any Text WCAG AA × Fail

Large Text (above 18pt) WCAG AAA × Fail

Any Text WCAG AAA × Fail

# Black Background



## Color Contrast Check

Large Text (above 18pt) WCAG AA ✓ Pass

Any Text WCAG AA ✓ Pass

Large Text (above 18pt) WCAG AAA ✓ Pass

Any Text WCAG AAA ✓ Pass

If you want to check with other color combinations, try the [Color Contrast Checker](#).



## Hex CE9994 Background



This preview shows how black text looks on a background with the Hex color CE9994.

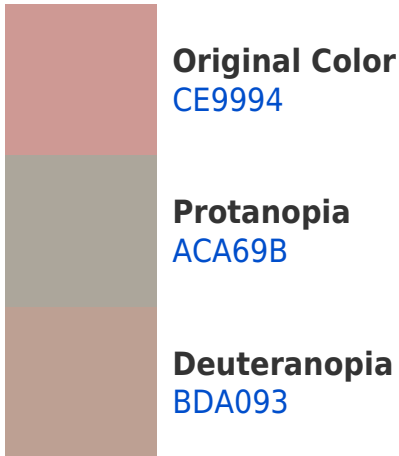


This preview shows how white text looks on a background with the Hex color CE9994.

# Color Blindness Simulation

Color vision deficiency is a very complex topic, and I could not describe the different causes any better than Wikipedia does, so if you want to learn more, you should check out their [article about color blindness](#).

## Dichromacy





**Tritanopia**  
D097A2

# Trichromacy



**Original Color**  
CE9994

**Protanomaly**  
B8A198

**Deuteranomaly**  
C39D93

**Tritanomaly**  
CF989D

# Monochromacy



**Original Color**  
CE9994

**Achromatopsia**  
A8A8A8

**Achromatomaly**  
B6A3A1

# CSS Examples

## Text

The CSS property to change the color of the text to Hex CE9994 is called "color". The color property can be set on classes, ids or directly on the HTML element.

This example shows how text in the color #CE9994 looks like.

```
.text, #text, p{  
    color:#CE9994  
}
```

If you want to add a text shadow in that color use the text-shadow property, you can generate a text shadow directly with our [CSS Text Shadow Generator](#).

Here you see how black text with a 4 pixel #CE9994 colored shadow looks like.

```
.shadow{ text-shadow: 4px 4px 2px #CE9994
}
```

## Border

The CSS property to change the border of an element to Hex CE9994 is called "border". The border property can be set on classes, ids or directly on the HTML element.

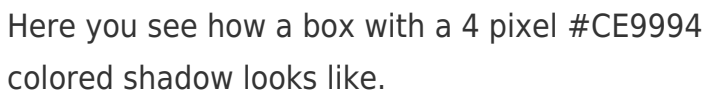
This example shows the color as border, it can be applied via the CSS property "border" or "border-color".

```
.border, #border, table{ border:4px solid
#CE9994 }
```

If only the border color should be changed use the property `border-color`.

```
.border{ border-color:#CE9994 }
```

If you want to add a box shadow in that color use:



Here you see how a box with a 4 pixel #CE9994 colored shadow looks like.

```
.boxshadow{ -moz-box-shadow:4px 4px 4px  
4px #CE9994; -webkit-box-shadow:4px 4px  
4px 4px #CE9994; box-shadow:4px 4px 4px  
4px #CE9994 }
```

# Background

The CSS property to change the background color of an element to Hex CE9994 is called "background". The background property can be set on classes, ids or directly on the HTML element.

```
.background, #background, body{  
background:#CE9994 }
```

If only the background color should be changed can be used:

```
.background{ background-color:#CE9994 }
```

This example shows the color as background, it is applied via the CSS property "background".

To optimize and compress your CSS code, you can use our [online CSS compressor and optimizer](#) based on csstidy. If you want to create a linear or radial gradient as background or border, check our [CSS Gradient Generator](#).



Hey! You found this booklet interesting? Support Converting Colors with the new Membership Option!

The pro membership hides all ads, plus gives you double the colors in the color bucket, and more awesome pro features!

**[Learn more, Memberships starting at \\$2.50/m!](#)**

**Follow me  
on Twitter!**

@ConvertingColor