

# Converting Colors

Hex(CE9997)

Have a look what the booklet for  
Hex(CE9997) contains.

<b>Hex(CE9997)</b> .....	3
<b><i>Conversions</i></b> .....	4
<b><i>Details</i></b> .....	6
<b><i>Harmonies</i></b> .....	11
<b><i>Previews</i></b> .....	23
<b><i>Color Blindness Simulation</i></b> .....	26
<b><i>CSS Examples</i></b> .....	29

# **Color**

**Hex(CE9997)**

# Conversions

## Conversions Part 1

Format	Color
Hex	CE9997
RGB	206, 153, 151
RGB Percent	81%, 60%, 59%
CMY	0.1922, 0.4000, 0.4078
CMYK	0.00, 0.26, 0.27, 0.19
HSL	2°, 36%, 70%
HSV	2°, 27%, 81%
XYZ	42.4307, 38.1386, 34.4033
YIQ	168.6190, 32.2300, 10.6140

# Conversions

## Conversions Part 2

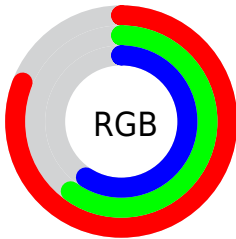
<b>Format</b>	<b>Color</b>
<b>R<sub>YB</sub></b>	206, 153, 151
Decimal	13539735
CIE <sub>Lab</sub>	68.12, 19.54, 8.82
CIE <sub>LCh</sub>	68, 21.436, 24.292
Yxy	38.1386, 0.3691, 0.3317
Android (android.graphics.Color)	4291729815 (0xFFCE9997)
YUV	168.6190, -8.6862, 32.7831
Hunter-Lab	61.7565, 14.5673, 10.2003

# Details

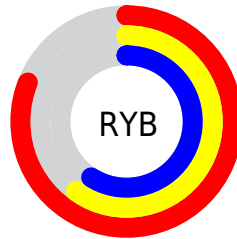
The Hex color **CE9997** is a light color, and the websafe version is hex **CC9999**. A complement of this color would be **97CCCE**, and the grayscale version is **A9A9A9**.

A 20% lighter version of the original color is **FFD0CD**, and **976664** is the 20% darker color. If you saturate the color by 10%, you get **CE8582**, and if you desaturate by 10%, it is **CEADAC**.

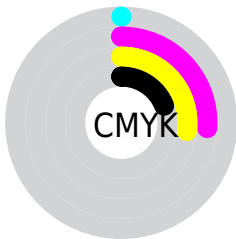
# Distribution



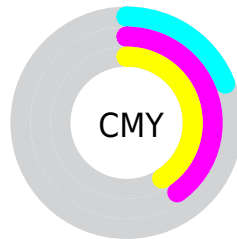
- Red (81%)
- Green (60%)
- Blue (59%)



- Red (81%)
- Yellow (60%)
- Blue (59%)



- Cyan (0%)
- Magenta (26%)
- Yellow (27%)
- Black (19%)



- Cyan (19%)
- Magenta (40%)
- Yellow (41%)

# Brightness & Saturation Gradients

These gradients show how the Hex color CE9997 changes by changing the brightness by 10 percent. The first figure shows a shift by +10% for each color and the second figure -10%.

Similar to the brightness gradients but the following saturation gradients show a change of the Hex color CE9997 by changing the saturation by 10% instead.



 CE9997

 CE9997

FFFFFF

 B27F7D

 FFD0CD

 976664

 FFECE9

 7C4D4C

 623636

 492020

 310A09

 180001

 000000

 CE9997

 CE9997

 CE8582

 CEADAC

 CE716E

 CEC1C0

 CE5D59

 CED5D5

 CE4A45

 CEE8E9

 CE3630

 CEFCFE

 CE221B

 CEFFFF

 CE0E07

 CE0700

# Harmonies

## Analogous

The Analogous color harmony consists of three colors that are next to each other on the color wheel.



CA99AB



CE9997



C79D87

# Triad

The Triadic color harmony groups three colors that are evenly spaced from another and form a triangle on the color wheel.



CE9997



8EAE8F



8AA9CC

# Complementary

The Complementary color scheme is a pair of colors which are on the opposite of each other on the color wheel.



CE9997



97CCCE

# Split Complementary

Split-complementary colors differ from the complementary color scheme. The scheme consists of three colors, the original color and two neighbors of the complement color.



76AEC5



CE9997



7AB1A2

# Square

The Square scheme is like the rectangle color scheme, but the four colors are evenly spaced on the color wheel.



CE9997



A4AA83



70B1B5



A4A2C9

# Rectangle

The Rectangle color scheme consists of four colors that form a rectangle on the color wheel.



CE9997



BEA181



70B1B5



82ABCB



# Sweetspot

The Sweet Spot groups the original color and five complimentary colors.



CE9997



FFEBE8



CE97CC



807373



000000



808080



# Same Dimension

The Same Dimension uses a secret algorithm to generate beautiful new colors.



CE9997



FFB0AD



CEB497



665C5C



A60600



260100



# Inverse Universe

The Inverse Universe completely reimagines the original color for something new.



97CCCE



ADFCFF



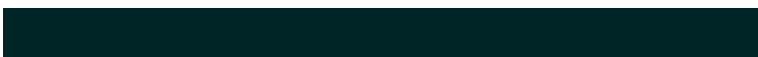
97B1CE



5C6666



00A0A6

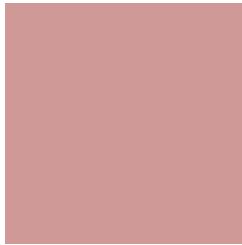


002526



# Previews

## White Background



This preview shows how the Hex color CE9997 looks on a white background.

## Color Contrast Check

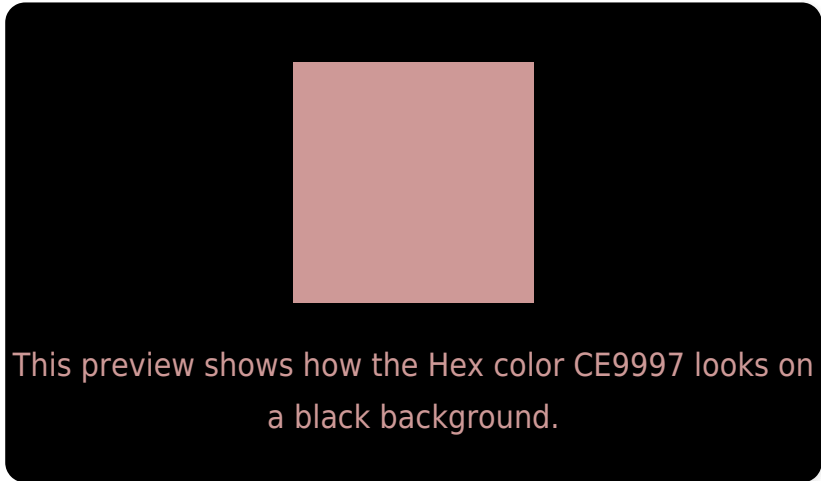
Large Text (above 18pt) WCAG AA × Fail

Any Text WCAG AA × Fail

Large Text (above 18pt) WCAG AAA × Fail

Any Text WCAG AAA × Fail

# Black Background



## Color Contrast Check

Large Text (above 18pt) WCAG AA ✓ Pass

Any Text WCAG AA ✓ Pass

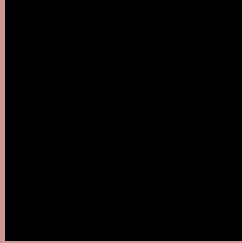
Large Text (above 18pt) WCAG AAA ✓ Pass

Any Text WCAG AAA ✓ Pass

If you want to check with other color combinations, try the [Color Contrast Checker](#).



## Hex CE9997 Background



This preview shows how black text looks on a background with the Hex color CE9997.



This preview shows how white text looks on a background with the Hex color CE9997.

# Color Blindness Simulation

Color vision deficiency is a very complex topic, and I could not describe the different causes any better than Wikipedia does, so if you want to learn more, you should check out their [article about color blindness](#).

## Dichromacy



**Original Color**  
CE9997

**Protanopia**  
ABA69E

**Deuteranopia**  
BDA096



**Tritanopia**  
CF97A3

# Trichromacy



**Original Color**  
CE9997

**Protanomaly**  
B8A19B

**Deuteranomaly**  
C39D96

**Tritanomaly**  
CF989F

# Monochromacy



**Original Color**  
CE9997

**Achromatopsia**  
A9A9A9

**Achromatomaly**  
B6A3A2

# CSS Examples

## Text

The CSS property to change the color of the text to Hex CE9997 is called "color". The color property can be set on classes, ids or directly on the HTML element.

This example shows how text in the color #CE9997 looks like.

```
.text, #text, p{  
    color:#CE9997  
}
```

If you want to add a text shadow in that color use the text-shadow property, you can generate a text shadow directly with our [CSS Text Shadow Generator](#).

Here you see how black text with a 4 pixel #CE9997 colored shadow looks like.

```
.shadow{ text-shadow: 4px 4px 2px #CE9997  
}
```

## Border

The CSS property to change the border of an element to Hex CE9997 is called "border". The border property can be set on classes, ids or directly on the HTML element.

This example shows the color as border, it can be applied via the CSS property "border" or "border-color".

```
.border, #border, table{ border:4px solid  
#CE9997 }
```

If only the border color should be changed use the property `border-color`.

```
.border{ border-color:#CE9997 }
```

If you want to add a box shadow in that color use:

Here you see how a box with a 4 pixel #CE9997 colored shadow looks like.

```
.boxshadow{ -moz-box-shadow:4px 4px 4px  
4px #CE9997; -webkit-box-shadow:4px 4px  
4px 4px #CE9997; box-shadow:4px 4px 4px  
4px #CE9997 }
```

# Background

The CSS property to change the background color of an element to Hex CE9997 is called "background". The background property can be set on classes, ids or directly on the HTML element.

```
.background, #background, body{  
background:#CE9997 }
```

If only the background color should be changed can be used:

```
.background{ background-color:#CE9997 }
```

This example shows the color as background, it is applied via the CSS property "background".

To optimize and compress your CSS code, you can use our [online CSS compressor and optimizer](#) based on csstidy. If you want to create a linear or radial gradient as background or border, check our [CSS Gradient Generator](#).



Hey! You found this booklet interesting? Support Converting Colors with the new Membership Option!

The pro membership hides all ads, plus gives you double the colors in the color bucket, and more awesome pro features!

**[Learn more, Memberships starting at \\$2.50/m!](#)**

**Follow me  
on Twitter!**

@ConvertingColor