

Converting Colors

Hex(CE9D8D)

Have a look what the booklet for
Hex(CE9D8D) contains.

Hex(CE9D8D)	3
<i>Conversions</i>	4
<i>Details</i>	6
<i>Harmonies</i>	11
<i>Previews</i>	23
<i>Color Blindness Simulation</i>	26
<i>CSS Examples</i>	29

Color

Hex(CE9D8D)

Conversions

Conversions Part 1

Format	Color
Hex	CE9D8D
RGB	206, 157, 141
RGB Percent	81%, 62%, 55%
CMY	0.1922, 0.3843, 0.4471
CMYK	0.00, 0.24, 0.32, 0.19
HSL	15°, 40%, 68%
HSV	15°, 32%, 81%
XYZ	42.3183, 39.1588, 30.5273
YIQ	169.8270, 34.3400, 5.4120

Conversions

Conversions Part 2

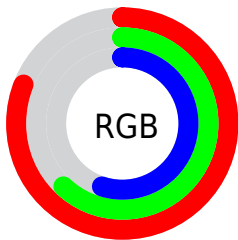
Format	Color
R _Y B	206, 162, 141
Decimal	13540749
CIE Lab	68.87, 16.00, 15.42
CIE LCh	69, 22.218, 43.953
Yxy	39.1588, 0.3778, 0.3496
Android (android.graphics.Color)	4291730829 (0xFFCE9D8D)
YUV	169.8270, -14.2117, 31.7237
Hunter-Lab	62.5770, 11.2025, 14.8801

Details

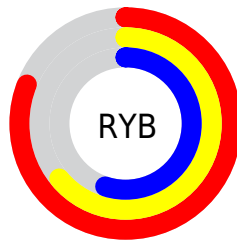
The Hex color **CE9D8D** is a light color, and the websafe version is hex **CC9999**. A complement of this color would be **8DBECE**, and the grayscale version is **AAAAAA**.

A 20% lighter version of the original color is **FFD4C3**, and **966A5B** is the 20% darker color. If you saturate the color by 10%, you get **CE8D78**, and if you desaturate by 10%, it is **CEADA2**.

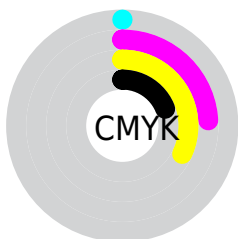
Distribution



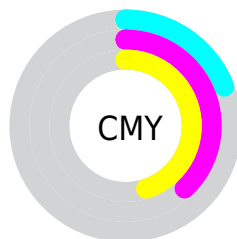
- Red (81%)
- Green (62%)
- Blue (55%)



- Red (81%)
- Yellow (64%)
- Blue (55%)



- Cyan (0%)
- Magenta (24%)
- Yellow (32%)
- Black (19%)



- Cyan (19%)
- Magenta (38%)
- Yellow (45%)

Brightness & Saturation Gradients

These gradients show how the Hex color CE9D8D changes by changing the brightness by 10 percent. The first figure shows a shift by +10% for each color and the second figure -10%.

Similar to the brightness gradients but the following saturation gradients show a change of the Hex color CE9D8D by changing the saturation by 10% instead.

 CE9D8D

 CE9D8D

FFFFFF

 B28373

 FFD4C3

 966A5B

 FFF0DF

 7C5143

 FFFFFB

 623A2D

 482418

 310F00

 170000

 000000

 CE9D8D

 CE9D8D

 CE8D78

 CEADA2

 CE7E64

 CEBCB6

 CE6E4F

 CECCCB

 CE5F3B

 CEDBDF

 CE4F26

 CEEBF4

 CE4011

 CEFAFF

 CE3300

 CEFFFF

Harmonies

Analogous

The Analogous color harmony consists of three colors that are next to each other on the color wheel.



D19A9F



CE9D8D



C1A382

Triad

The Triadic color harmony groups three colors that are evenly spaced from another and form a triangle on the color wheel.



CE9D8D



81B39C



9DA7CF

Complementary

The Complementary color scheme is a pair of colors which are on the opposite of each other on the color wheel.



CE9D8D



8DBECE

Split Complementary

Split-complementary colors differ from the complementary color scheme. The scheme consists of three colors, the original color and two neighbors of the complement color.



82ADCE



CE9D8D



71B4B1

Square

The Square scheme is like the rectangle color scheme, but the four colors are evenly spaced on the color wheel.



CE9D8D



97AF8B



71B2C3



B7A0C5

Rectangle

The Rectangle color scheme consists of four colors that form a rectangle on the color wheel.



CE9D8D



B4A880



71B2C3



94A9D0

Sweetspot

The Sweet Spot groups the original color and five complimentary colors.



CE9D8D



FFEEE8



CE8DBF



807571



000000



808080

Same Dimension

The Same Dimension uses a secret algorithm to generate beautiful new colors.



CE9D8D



FFB69E



CEBD8D



665E5C



A62900



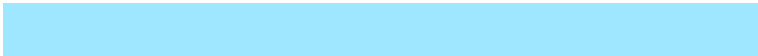
260900

Inverse Universe

The Inverse Universe completely reimagines the original color for something new.



8DBECE



9EE7FF



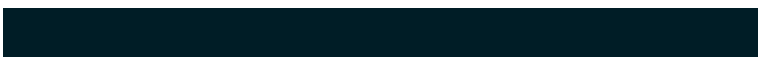
8D9ECE



5C6366



007DA6



001D26

Previews

White Background



This preview shows how the Hex color CE9D8D looks on a white background.

Color Contrast Check

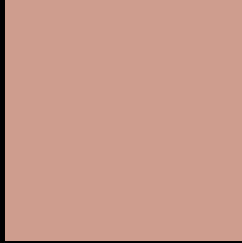
Large Text (above 18pt) WCAG AA × Fail

Any Text WCAG AA × Fail

Large Text (above 18pt) WCAG AAA × Fail

Any Text WCAG AAA × Fail

Black Background



This preview shows how the Hex color CE9D8D looks on a black background.

Color Contrast Check

Large Text (above 18pt) WCAG AA ✓ Pass

Any Text WCAG AA ✓ Pass

Large Text (above 18pt) WCAG AAA ✓ Pass

Any Text WCAG AAA ✓ Pass

If you want to check with other color combinations, try the [Color Contrast Checker](#).

Hex CE9D8D Background



This preview shows how black text looks on a background with the Hex color CE9D8D.

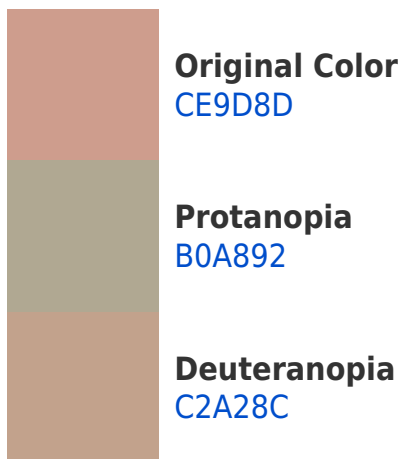


This preview shows how white text looks on a background with the Hex color CE9D8D.

Color Blindness Simulation

Color vision deficiency is a very complex topic, and I could not describe the different causes any better than Wikipedia does, so if you want to learn more, you should check out their [article about color blindness](#).

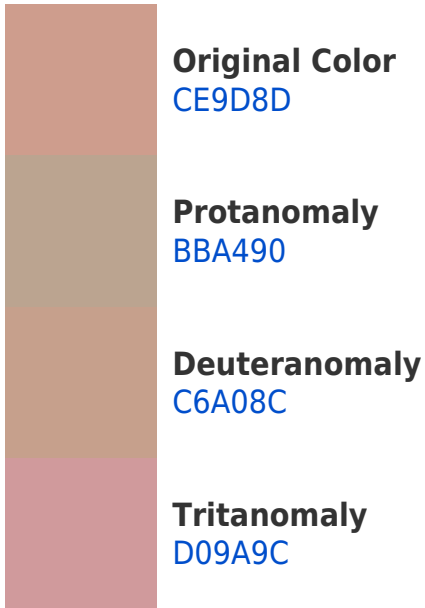
Dichromacy



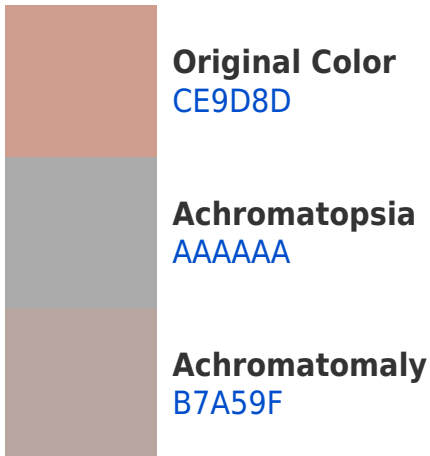


Tritanopia
D199A5

Trichromacy



Monochromacy



CSS Examples

Text

The CSS property to change the color of the text to Hex CE9D8D is called "color". The color property can be set on classes, ids or directly on the HTML element.

This example shows how text in the color #CE9D8D looks like.

```
.text, #text, p{  
    color:#CE9D8D  
}
```

If you want to add a text shadow in that color use the text-shadow property, you can generate a text shadow directly with our [CSS Text Shadow Generator](#).

Here you see how black text with a 4 pixel #CE9D8D colored shadow looks like.

```
.shadow{ text-shadow: 4px 4px 2px #CE9D8D
}
```

Border

The CSS property to change the border of an element to Hex CE9D8D is called "border". The border property can be set on classes, ids or directly on the HTML element.

This example shows the color as border, it can be applied via the CSS property "border" or "border-color".

```
.border, #border, table{ border:4px solid
#CE9D8D }
```

If only the border color should be changed use the property `border-color`.

```
.border{ border-color:#CE9D8D }
```

If you want to add a box shadow in that color use:

Here you see how a box with a 4 pixel #CE9D8D colored shadow looks like.

```
.boxshadow{ -moz-box-shadow:4px 4px 4px  
4px #CE9D8D; -webkit-box-shadow:4px 4px  
4px 4px #CE9D8D; box-shadow:4px 4px 4px  
4px #CE9D8D }
```

Background

The CSS property to change the background color of an element to Hex CE9D8D is called "background". The background property can be set on classes, ids or directly on the HTML element.

```
.background, #background, body{  
background:#CE9D8D }
```

If only the background color should be changed can be used:

```
.background{ background-color:#CE9D8D }
```

This example shows the color as background, it is applied via the CSS property "background".

To optimize and compress your CSS code, you can use our [online CSS compressor and optimizer](#) based on csstidy. If you want to create a linear or radial gradient as background or border, check our [CSS Gradient Generator](#).

Hey! You found this booklet interesting? Support Converting Colors with the new Membership Option!

The pro membership hides all ads, plus gives you double the colors in the color bucket, and more awesome pro features!

[Learn more, Memberships starting at \\$2.50/m!](#)

**Follow me
on Twitter!**

@ConvertingColor