

Converting Colors

Hex(CEABAE)

Have a look what the booklet for
Hex(CEABAE) contains.

| | |
|--|----|
| Hex(CEABAE) | 3 |
| <i>Conversions</i> | 4 |
| <i>Details</i> | 6 |
| <i>Harmonies</i> | 11 |
| <i>Previews</i> | 23 |
| <i>Color Blindness Simulation</i> | 26 |
| <i>CSS Examples</i> | 29 |

Color

Hex(CEABAE)

Conversions

Conversions Part 1

| Format | Color |
|-------------|---------------------------|
| Hex | CEABAE |
| RGB | 206, 171, 174 |
| RGB Percent | 81%, 67%, 68% |
| CMY | 0.1922, 0.3294, 0.3176 |
| CMYK | 0.00, 0.17, 0.16, 0.19 |
| HSL | 355°, 26%, 74% |
| HSV | 355°, 17%, 81% |
| XYZ | 47.6565, 45.3036, 46.2771 |
| YIQ | 181.8070, 19.8970, 8.3530 |

Conversions

Conversions Part 2

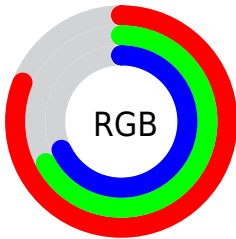
| Format | Color |
|-------------------------------------|-------------------------------|
| R _Y B | 206, 171, 174 |
| Decimal | 13544366 |
| CIE Lab | 73.09, 13.21, 3.23 |
| CIE LCh | 73, 13.596, 13.762 |
| Yxy | 45.3036, 0.3423, 0.3254 |
| Android (android.graphics.Color) | 4291734446 (0xFFCEABAE) |
| YUV | 181.8070, -3.8489, 21.2173 |
| Hunter-Lab | 67.3080, 8.5956, 6.3512 |

Details

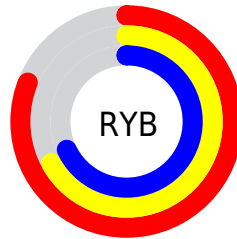
The Hex color **CEABAE** is a light color, and the websafe version is hex **CC9999**. A complement of this color would be **ABCECB**, and the grayscale version is **B6B6B6**.

A 20% lighter version of the original color is **FFE2E5**, and **97777A** is the 20% darker color. If you saturate the color by 10%, you get **CE969B**, and if you desaturate by 10%, it is **CEC0C1**.

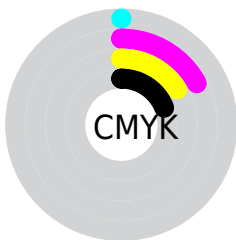
Distribution



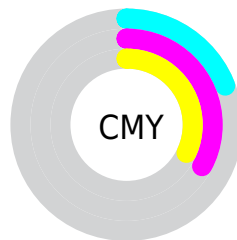
- Red (81%)
- Green (67%)
- Blue (68%)



- Red (81%)
- Yellow (67%)
- Blue (68%)



- Cyan (0%)
- Magenta (17%)
- Yellow (16%)
- Black (19%)



- Cyan (19%)
- Magenta (33%)
- Yellow (32%)

Brightness & Saturation Gradients

These gradients show how the Hex color CEABAE changes by changing the brightness by 10 percent. The first figure shows a shift by +10% for each color and the second figure -10%.

Similar to the brightness gradients but the following saturation gradients show a change of the Hex color CEABAE by changing the saturation by 10% instead.

 CEABAE

 CEABAE

FFFFFF

 B29093

 FFE2E5

 97777A

 7D5E61

 644649

 4B3033

 341A1E

 210104

 000000

 CEABAE

 CEABAE

 CE969B

 CEC0C1

 CE8288

 CED4D4

 CE6D75

 CEE9E7

 CE5963

 CEFDF9

 CE4450

 CEFFFF

 CE2F3D

 CE1B2A

 CE0617

 CE0012

Harmonies

Analogous

The Analogous color harmony consists of three colors that are next to each other on the color wheel.



C9ACBB



CEABAE



CCADA3

Triad

The Triadic color harmony groups three colors that are evenly spaced from another and form a triangle on the color wheel.



CEABAE



A9B8A1



9EB7CB

Complementary

The Complementary color scheme is a pair of colors which are on the opposite of each other on the color wheel.



CEABAE



ABCECB

Split Complementary

Split-complementary colors differ from the complementary color scheme. The scheme consists of three colors, the original color and two neighbors of the complement color.



95BAC4



CEABAE



9CBAAC

Square

The Square scheme is like the rectangle color scheme, but the four colors are evenly spaced on the color wheel.



CEABAE



B7B49B



94BBB9



ADB3CB

Rectangle

The Rectangle color scheme consists of four colors that form a rectangle on the color wheel.



CEABAE



C7AF9D



94BBB9



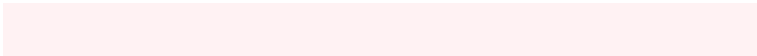
9AB8C9

Sweetspot

The Sweet Spot groups the original color and five complimentary colors.



CEABAE



FFF2F3



CBABCE



807879



000000



808080

Same Dimension

The Same Dimension uses a secret algorithm to generate beautiful new colors.



CEABAE



FFCCD0



CEB9AB



665C5D



A6000E



260003

Inverse Universe

The Inverse Universe completely reimagines the original color for something new.



CEABAE



FFCCD0



ABC0CE



665C5D



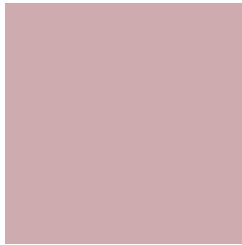
A6000E



260003

Previews

White Background



This preview shows how the Hex color CEABAE looks on a white background.

Color Contrast Check

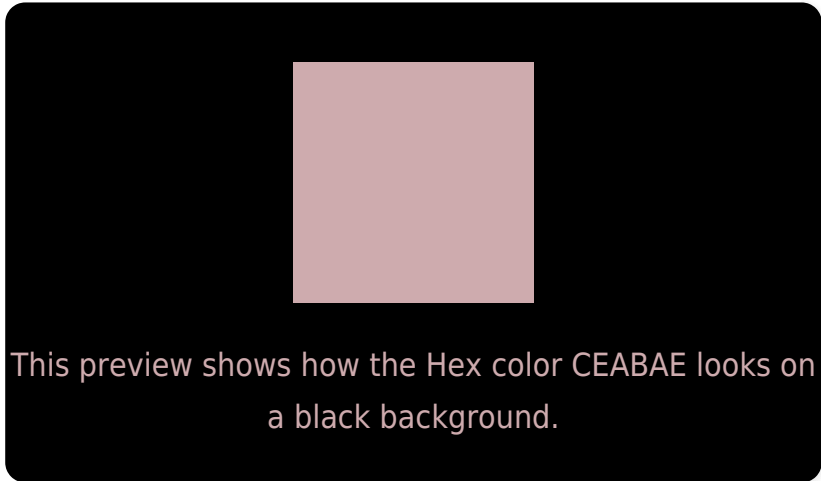
Large Text (above 18pt) WCAG AA × Fail

Any Text WCAG AA × Fail

Large Text (above 18pt) WCAG AAA × Fail

Any Text WCAG AAA × Fail

Black Background



Color Contrast Check

Large Text (above 18pt) WCAG AA ✓ Pass

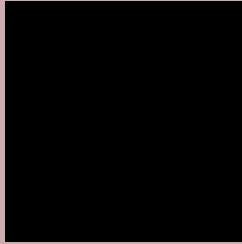
Any Text WCAG AA ✓ Pass

Large Text (above 18pt) WCAG AAA ✓ Pass

Any Text WCAG AAA ✓ Pass

If you want to check with other color combinations, try the [Color Contrast Checker](#).

Hex CEABAE Background



This preview shows how black text looks on a background with the Hex color CEABAE.

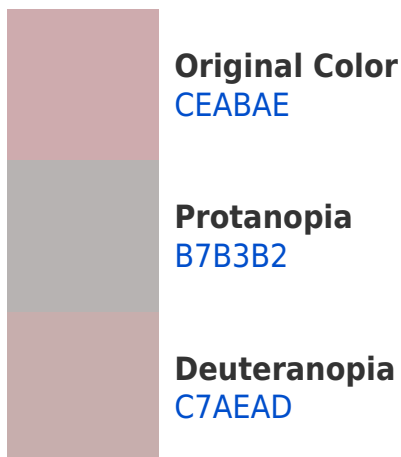


This preview shows how white text looks on a background with the Hex color CEABAE.

Color Blindness Simulation

Color vision deficiency is a very complex topic, and I could not describe the different causes any better than Wikipedia does, so if you want to learn more, you should check out their [article about color blindness](#).

Dichromacy



Trichromacy



Original Color
CEABAE

Protanomaly
BFB0B1

Deuteranomaly
CAADAD

Tritanomaly
CFAAB4

Monochromacy



Original Color
CEABAE

Achromatopsia
B6B6B6

Achromatomaly
BFB2B3

CSS Examples

Text

The CSS property to change the color of the text to Hex CEABAE is called "color". The color property can be set on classes, ids or directly on the HTML element.

This example shows how text in the color #CEABAE looks like.

```
.text, #text, p{  
    color:#CEABAE  
}
```

If you want to add a text shadow in that color use the text-shadow property, you can generate a text shadow directly with our [CSS Text Shadow Generator](#).

Here you see how black text with a 4 pixel #CEABAE colored shadow looks like.

```
.shadow{ text-shadow: 4px 4px 2px #CEABAE
}
```

Border

The CSS property to change the border of an element to Hex CEABAE is called "border". The border property can be set on classes, ids or directly on the HTML element.

This example shows the color as border, it can be applied via the CSS property "border" or "border-color".

```
.border, #border, table{ border:4px solid
#CEABAE }
```

If only the border color should be changed use the property `border-color`.

```
.border{ border-color:#CEABAE }
```

If you want to add a box shadow in that color use:

Here you see how a box with a 4 pixel #CEABAE colored shadow looks like.

```
.boxshadow{ -moz-box-shadow:4px 4px 4px  
4px #CEABAE; -webkit-box-shadow:4px 4px  
4px 4px #CEABAE; box-shadow:4px 4px 4px  
4px #CEABAE }
```

Background

The CSS property to change the background color of an element to Hex CEABAE is called "background". The background property can be set on classes, ids or directly on the HTML element.

```
.background, #background, body{  
background:#CEABAE }
```

If only the background color should be changed can be used:

```
.background{ background-color:#CEABAE }
```

This example shows the color as background, it is applied via the CSS property "background".

To optimize and compress your CSS code, you can use our [online CSS compressor and optimizer](#) based on csstidy. If you want to create a linear or radial gradient as background or border, check our [CSS Gradient Generator](#).

Hey! You found this booklet interesting? Support Converting Colors with the new Membership Option!

The pro membership hides all ads, plus gives you double the colors in the color bucket, and more awesome pro features!

[Learn more, Memberships starting at \\$2.50/m!](#)

**Follow me
on Twitter!**

@ConvertingColor