

Converting Colors

Hex(CEAE8C)

Have a look what the booklet for
Hex(CEAE8C) contains.

Hex(CEAE8C)	3
<i>Conversions</i>	4
<i>Details</i>	6
<i>Harmonies</i>	11
<i>Previews</i>	23
<i>Color Blindness Simulation</i>	26
<i>CSS Examples</i>	29

Color

Hex(CEAE8C)

Conversions

Conversions Part 1

Format	Color
Hex	CEAE8C
RGB	206, 174, 140
RGB Percent	81%, 68%, 55%
CMY	0.1922, 0.3176, 0.4510
CMYK	0.00, 0.16, 0.32, 0.19
HSL	31°, 40%, 68%
HSV	31°, 32%, 81%
XYZ	45.3233, 45.2874, 31.1635
YIQ	179.6920, 29.9860, -3.7900

Conversions

Conversions Part 2

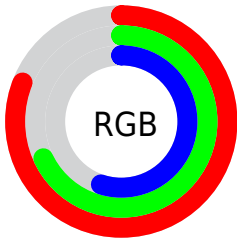
Format	Color
R _Y B	202, 206, 140
Decimal	13545100
CIE Lab	73.08, 6.66, 21.78
CIE LCh	73, 22.780, 73.000
Yxy	45.2874, 0.3722, 0.3719
Android (android.graphics.Color)	4291735180 (0xFFCEAE8C)
YUV	179.6920, -19.5682, 23.0721
Hunter-Lab	67.2959, 2.4506, 19.6510

Details

The Hex color **CEAE8C** is a light color, and the websafe version is hex **CC9966**. A complement of this color would be **8CACCE**, and the grayscale version is **B4B4B4**.

A 20% lighter version of the original color is **FFE5C2**, and **977A5A** is the 20% darker color. If you saturate the color by 10%, you get **CEA477**, and if you desaturate by 10%, it is **CEB8A1**.

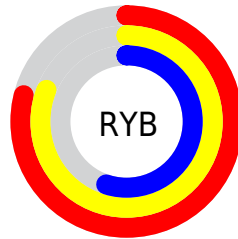
Distribution



Red (81%)

Green (68%)

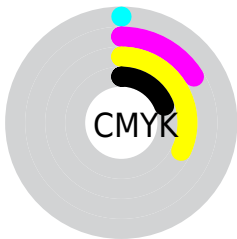
Blue (55%)



Red (79%)

Yellow (81%)

Blue (55%)

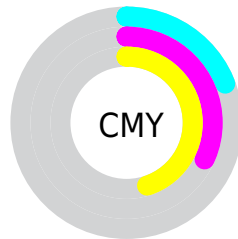


Cyan (0%)

Magenta (16%)

Yellow (32%)

Black (19%)



Cyan (19%)

Magenta (32%)

Yellow (45%)

Brightness & Saturation Gradients

These gradients show how the Hex color CEAE8C changes by changing the brightness by 10 percent. The first figure shows a shift by +10% for each color and the second figure -10%.

Similar to the brightness gradients but the following saturation gradients show a change of the Hex color CEAE8C by changing the saturation by 10% instead.

 CEAE8C

 CEAE8C

FFFFFF

 B29372

 FFE5C2

 977A5A

 FFFFDE

 7C6142

 FFFFFA

 62492B

 493316

 321D00

 1A0600

 000000

 CEAE8C

 CEAE8C

 CEA477

 CEB8A1

 CE9A63

 CEC2B5

 CE904E

 CECCCA

 CE863A

 CED6DE

 CE7C25

 CEE0F3

 CE7210

 CEEAFF

 CE6A00

 CEF4FF

 CEFEFF

 CEFFFF

Harmonies

Analogous

The Analogous color harmony consists of three colors that are next to each other on the color wheel.



DBA898



CEAE8C



BAB58B

Triad

The Triadic color harmony groups three colors that are evenly spaced from another and form a triangle on the color wheel.



CEAE8C



7BBFBC



C2ABD2

Complementary

The Complementary color scheme is a pair of colors which are on the opposite of each other on the color wheel.



CEAE8C



8CACCE

Split Complementary

Split-complementary colors differ from the complementary color scheme. The scheme consists of three colors, the original color and two neighbors of the complement color.



A7B2DC



CEAE8C



7BBDCF

Square

The Square scheme is like the rectangle color scheme, but the four colors are evenly spaced on the color wheel.



CEAE8C



8BBEA7



8CB9DB



D6A6C0

Rectangle

The Rectangle color scheme consists of four colors that form a rectangle on the color wheel.



CEAE8C



AAB990



8CB9DB



BAADD6

Sweetspot

The Sweet Spot groups the original color and five complimentary colors.



CEAE8C



FFF3E6



CE8CAD



807870



000000



808080

Same Dimension

The Same Dimension uses a secret algorithm to generate beautiful new colors.



CEAE8C



FFD09E



CECE8C



66615C



A65500



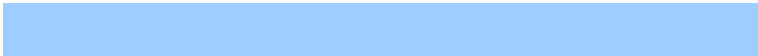
261400

Inverse Universe

The Inverse Universe completely reimagines the original color for something new.



8CACCE



9ECDFF



8C8CCE



5C6166



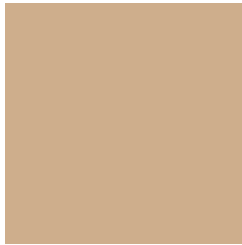
0050A6



001326

Previews

White Background



This preview shows how the Hex color CEAE8C looks on a white background.

Color Contrast Check

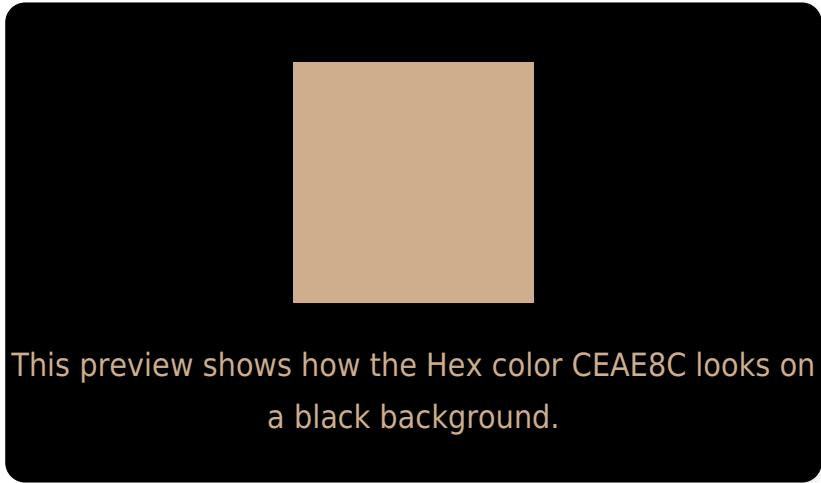
Large Text (above 18pt) WCAG AA × Fail

Any Text WCAG AA × Fail

Large Text (above 18pt) WCAG AAA × Fail

Any Text WCAG AAA × Fail

Black Background



Color Contrast Check

Large Text (above 18pt) WCAG AA ✓ Pass

Any Text WCAG AA ✓ Pass

Large Text (above 18pt) WCAG AAA ✓ Pass

Any Text WCAG AAA ✓ Pass

If you want to check with other color combinations, try the [Color Contrast Checker](#).

Hex CEAE8C Background



This preview shows how black text looks on a background with the Hex color CEAE8C.



This preview shows how white text looks on a background with the Hex color CEAE8C.

Color Blindness Simulation

Color vision deficiency is a very complex topic, and I could not describe the different causes any better than Wikipedia does, so if you want to learn more, you should check out their [article about color blindness](#).

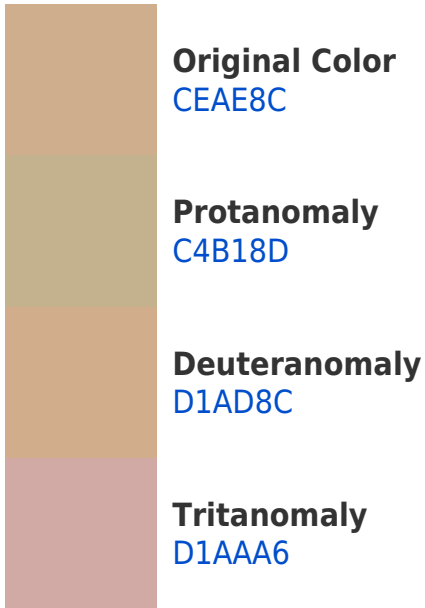
Dichromacy





Tritanopia
D3A8B5

Trichromacy



Monochromacy



CSS Examples

Text

The CSS property to change the color of the text to Hex CEAE8C is called "color". The color property can be set on classes, ids or directly on the HTML element.

This example shows how text in the color #CEAE8C looks like.

```
.text, #text, p{  
    color:#CEAE8C  
}
```

If you want to add a text shadow in that color use the text-shadow property, you can generate a text shadow directly with our [CSS Text Shadow Generator](#).

Here you see how black text with a 4 pixel #CEAE8C colored shadow looks like.

```
.shadow{ text-shadow: 4px 4px 2px #CEAE8C  
}
```

Border

The CSS property to change the border of an element to Hex CEAE8C is called "border". The border property can be set on classes, ids or directly on the HTML element.

This example shows the color as border, it can be applied via the CSS property "border" or "border-color".

```
.border, #border, table{ border:4px solid  
#CEAE8C }
```

If only the border color should be changed use the property `border-color`.

```
.border{ border-color:#CEAE8C }
```

If you want to add a box shadow in that color use:

Here you see how a box with a 4 pixel #CEAE8C colored shadow looks like.

```
.boxshadow{ -moz-box-shadow:4px 4px 4px  
4px #CEAE8C; -webkit-box-shadow:4px 4px  
4px 4px #CEAE8C; box-shadow:4px 4px 4px  
4px #CEAE8C }
```

Background

The CSS property to change the background color of an element to Hex CEAE8C is called "background". The background property can be set on classes, ids or directly on the HTML element.

```
.background, #background, body{  
background:#CEAE8C }
```

If only the background color should be changed can be used:

```
.background{ background-color:#CEAE8C }
```

This example shows the color as background, it is applied via the CSS property "background".

To optimize and compress your CSS code, you can use our [online CSS compressor and optimizer](#) based on csstidy. If you want to create a linear or radial gradient as background or border, check our [CSS Gradient Generator](#).

Hey! You found this booklet interesting? Support Converting Colors with the new Membership Option!

The pro membership hides all ads, plus gives you double the colors in the color bucket, and more awesome pro features!

[Learn more, Memberships starting at \\$2.50/m!](#)

**Follow me
on Twitter!**

@ConvertingColor