

# Converting Colors

Hex(CEAFB4)

Have a look what the booklet for  
Hex(CEAFB4) contains.

<b>Hex(CEAFB4)</b> .....	3
<i><b>Conversions</b></i> .....	4
<i><b>Details</b></i> .....	6
<i><b>Harmonies</b></i> .....	11
<i><b>Previews</b></i> .....	23
<i><b>Color Blindness Simulation</b></i> .....	26
<i><b>CSS Examples</b></i> .....	29

# **Color**

**Hex(CEAFB4)**

# Conversions

## Conversions Part 1

<b>Format</b>	<b>Color</b>
Hex	CEAFB4
RGB	206, 175, 180
RGB Percent	81%, 69%, 71%
CMY	0.1922, 0.3137, 0.2941
CMYK	0.00, 0.15, 0.13, 0.19
HSL	350°, 24%, 75%
HSV	350°, 15%, 81%
XYZ	49.0218, 47.0770, 49.6831
YIQ	184.8390, 16.8710, 8.1270

# Conversions

## Conversions Part 2

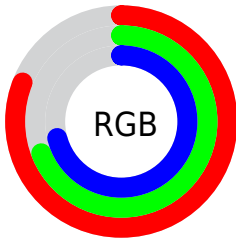
<b>Format</b>	<b>Color</b>
R <sub>Y</sub> B	206, 175, 180
Decimal	13545396
CIE Lab	74.24, 12.02, 1.61
CIE LCh	74, 12.124, 7.636
Yxy	47.0770, 0.3363, 0.3229
Android (android.graphics.Color)	4291735476 (0xFFCEAFB4)
YUV	184.8390, -2.3856, 18.5582
Hunter-Lab	68.6127, 7.4608, 5.0965

# Details

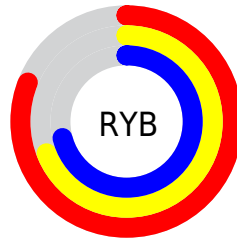
The Hex color **CEAFB4** is a light color, and the websafe version is hex **CC9999**. A complement of this color would be **AFCEC9**, and the grayscale version is **B9B9B9**.

A 20% lighter version of the original color is **FFE7EC**, and **977A7F** is the 20% darker color. If you saturate the color by 10%, you get **CE9AA3**, and if you desaturate by 10%, it is **CEC4C5**.

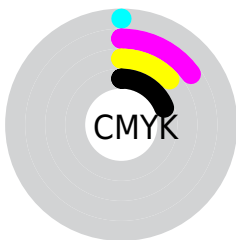
# Distribution



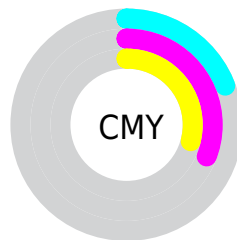
- Red (81%)
- Green (69%)
- Blue (71%)



- Red (81%)
- Yellow (69%)
- Blue (71%)



- Cyan (0%)
- Magenta (15%)
- Yellow (13%)
- Black (19%)



- Cyan (19%)
- Magenta (31%)
- Yellow (29%)

# Brightness & Saturation Gradients

These gradients show how the Hex color CEAFB4 changes by changing the brightness by 10 percent. The first figure shows a shift by +10% for each color and the second figure -10%.

Similar to the brightness gradients but the following saturation gradients show a change of the Hex color CEAFB4 by changing the saturation by 10% instead.



■ CEAFB4

■ CEAFB4

FFFFFF

■ B29499

■ FFE7EC

■ 977A7F

■ 7D6266

■ 644A4E

■ 4C3338

■ 351E22

■ 20060C

■ 000000

■ CEAFB4

■ CEAFB4

 CE9AA3

 CEC4C5

 CE8691

 CED8D7

 CE7180

 CEEDE8

 CE5D6F

 CEFFF9

 CE485E

 CEFFFF

 CE334C

 CE1F3B

 CE0A2A

 CE0021

# Harmonies

## Analogous

The Analogous color harmony consists of three colors that are next to each other on the color wheel.



C8B0BF



CEAFB4



CEB0A9

# Triad

The Triadic color harmony groups three colors that are evenly spaced from another and form a triangle on the color wheel.



CEAFB4



B0BAA5



A2BACB

# Complementary

The Complementary color scheme is a pair of colors which are on the opposite of each other on the color wheel.



CEAFB4



AFCEC9

# Split Complementary

Split-complementary colors differ from the complementary color scheme. The scheme consists of three colors, the original color and two neighbors of the complement color.



9BBCC4



CEAFB4



A4BCAE

# Square

The Square scheme is like the rectangle color scheme, but the four colors are evenly spaced on the color wheel.



CEAFB4



BDB7A1



9CBDB9



AEB7CC

# Rectangle

The Rectangle color scheme consists of four colors that form a rectangle on the color wheel.



CEAFB4



CAB2A4



9CBDB9



9FBBC9

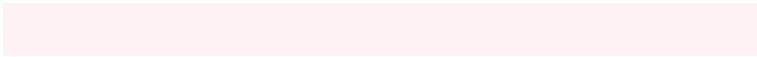


# Sweetspot

The Sweet Spot groups the original color and five complimentary colors.



CEAFB4



FFF2F4



C9AFCE



807879



000000



808080



# Same Dimension

The Same Dimension uses a secret algorithm to generate beautiful new colors.



CEAFB4



FFD1D9



CEB9AF



665C5D



A6001B



260006



# Inverse Universe

The Inverse Universe completely reimagines the original color for something new.



CEAFB4



FFD1D9



AFC4CE



665C5D



A6001B

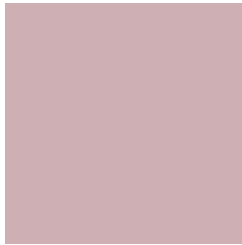


260006



# Previews

## White Background



This preview shows how the Hex color CEAFB4 looks on a white background.

## Color Contrast Check

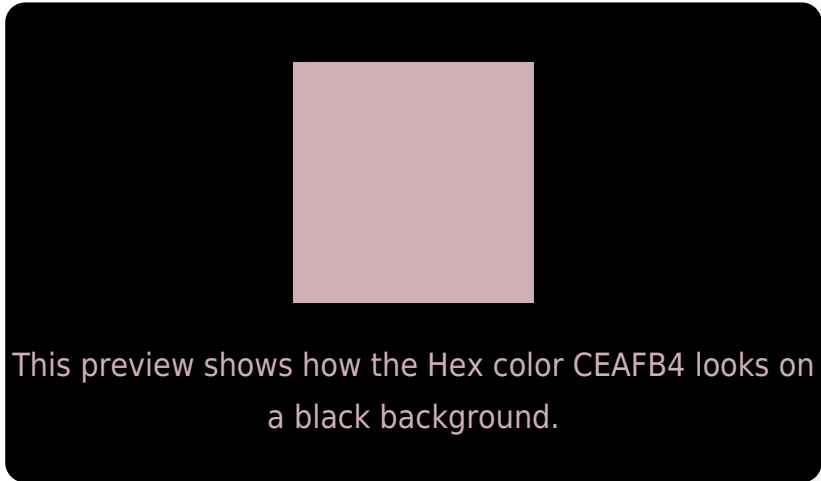
Large Text (above 18pt) WCAG AA × Fail

Any Text WCAG AA × Fail

Large Text (above 18pt) WCAG AAA × Fail

Any Text WCAG AAA × Fail

# Black Background



## Color Contrast Check

Large Text (above 18pt) WCAG AA ✓ Pass

Any Text WCAG AA ✓ Pass

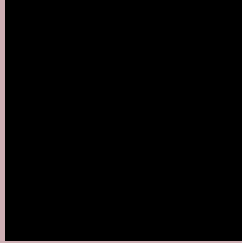
Large Text (above 18pt) WCAG AAA ✓ Pass

Any Text WCAG AAA ✓ Pass

If you want to check with other color combinations, try the [Color Contrast Checker](#).



## Hex CEAFB4 Background



This preview shows how black text looks on a background with the Hex color CEAFB4.



This preview shows how white text looks on a background with the Hex color CEAFB4.

# Color Blindness Simulation

Color vision deficiency is a very complex topic, and I could not describe the different causes any better than Wikipedia does, so if you want to learn more, you should check out their [article about color blindness](#).

## Dichromacy



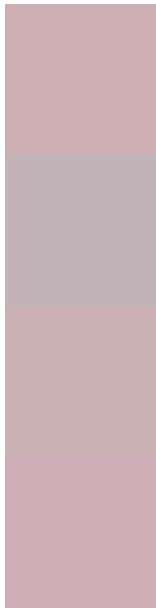
**Original Color**  
CEAFB4

**Protanopia**  
B9B6B8

**Deuteranopia**  
C9B1B4



# Trichromacy



**Original Color**  
CEAFB4

**Protanomaly**  
C1B3B7

**Deuteranomaly**  
CBB0B4

**Tritanomaly**  
CFAEB8

# Monochromacy



**Original Color**  
CEAFB4

**Achromatopsia**  
B9B9B9

**Achromatomaly**  
C1B5B7

# CSS Examples

## Text

The CSS property to change the color of the text to Hex CEAFB4 is called "color". The color property can be set on classes, ids or directly on the HTML element.

This example shows how text in the color #CEAFB4 looks like.

```
.text, #text, p{  
    color:#CEAFB4  
}
```

If you want to add a text shadow in that color use the text-shadow property, you can generate a text shadow directly with our [CSS Text Shadow Generator](#).

Here you see how black text with a 4 pixel #CEAFB4 colored shadow looks like.

```
.shadow{ text-shadow: 4px 4px 2px #CEAFB4  
}
```

## Border

The CSS property to change the border of an element to Hex CEAFB4 is called "border". The border property can be set on classes, ids or directly on the HTML element.

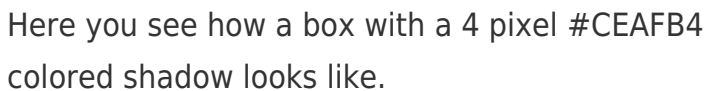
This example shows the color as border, it can be applied via the CSS property "border" or "border-color".

```
.border, #border, table{ border:4px solid  
#CEAFB4 }
```

If only the border color should be changed use the property `border-color`.

```
.border{ border-color:#CEAFB4 }
```

If you want to add a box shadow in that color use:



Here you see how a box with a 4 pixel #CEAFB4 colored shadow looks like.

```
.boxshadow{ -moz-box-shadow:4px 4px 4px  
4px #CEAFB4; -webkit-box-shadow:4px 4px  
4px 4px #CEAFB4; box-shadow:4px 4px 4px  
4px #CEAFB4 }
```

# Background

The CSS property to change the background color of an element to Hex CEAFB4 is called "background". The background property can be set on classes, ids or directly on the HTML element.

```
.background, #background, body{  
background:#CEAFB4 }
```

If only the background color should be changed can be used:

```
.background{ background-color:#CEAFB4 }
```

This example shows the color as background, it is applied via the CSS property "background".

To optimize and compress your CSS code, you can use our [online CSS compressor and optimizer](#) based on csstidy. If you want to create a linear or radial gradient as background or border, check our [CSS Gradient Generator](#).



Hey! You found this booklet interesting? Support Converting Colors with the new Membership Option!

The pro membership hides all ads, plus gives you double the colors in the color bucket, and more awesome pro features!

**[Learn more, Memberships starting at \\$2.50/m!](#)**

**Follow me  
on Twitter!**

@ConvertingColor