

Converting Colors

Hex(CEAFB5)

Have a look what the booklet for
Hex(CEAFB5) contains.

Hex(CEAFB5)	3
<i>Conversions</i>	4
<i>Details</i>	6
<i>Harmonies</i>	11
<i>Previews</i>	23
<i>Color Blindness Simulation</i>	26
<i>CSS Examples</i>	29

Color

Hex(CEAFB5)

Conversions

Conversions Part 1

Format	Color
Hex	CEAFB5
RGB	206, 175, 181
RGB Percent	81%, 69%, 71%
CMY	0.1922, 0.3137, 0.2902
CMYK	0.00, 0.15, 0.12, 0.19
HSL	348°, 24%, 75%
HSV	348°, 15%, 81%
XYZ	49.1241, 47.1180, 50.2216
YIQ	184.9530, 16.5500, 8.4380

Conversions

Conversions Part 2

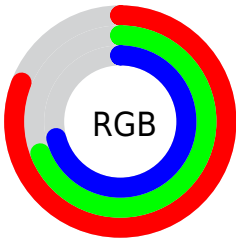
Format	Color
R _Y B	206, 175, 181
Decimal	13545397
CIE Lab	74.27, 12.18, 1.10
CIE LCh	74, 12.232, 5.167
Yxy	47.1180, 0.3354, 0.3217
Android (android.graphics.Color)	4291735477 (0xFFCEAFB5)
YUV	184.9530, -1.9488, 18.4582
Hunter-Lab	68.6425, 7.6192, 4.6708

Details

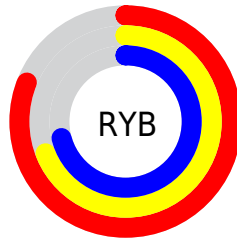
The Hex color **CEAFB5** is a light color, and the websafe version is hex **CC9999**. A complement of this color would be **AFCEC8**, and the grayscale version is **B9B9B9**.

A 20% lighter version of the original color is **FFE7ED**, and **977A80** is the 20% darker color. If you saturate the color by 10%, you get **CE9AA4**, and if you desaturate by 10%, it is **CEC4C6**.

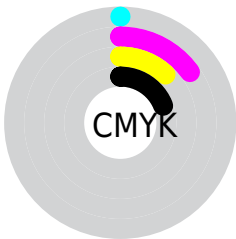
Distribution



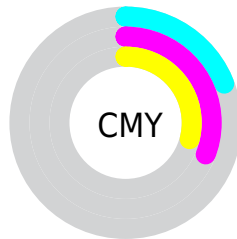
- Red (81%)
- Green (69%)
- Blue (71%)



- Red (81%)
- Yellow (69%)
- Blue (71%)



- Cyan (0%)
- Magenta (15%)
- Yellow (12%)
- Black (19%)



- Cyan (19%)
- Magenta (31%)
- Yellow (29%)

Brightness & Saturation Gradients

These gradients show how the Hex color CEAFB5 changes by changing the brightness by 10 percent. The first figure shows a shift by +10% for each color and the second figure -10%.

Similar to the brightness gradients but the following saturation gradients show a change of the Hex color CEAFB5 by changing the saturation by 10% instead.

 CEAFB5

 CEAFB5

FFFFFF

 B2949A

 FFE7ED

 977A80

 7D6267

 644A4F

 4C3338

 351E23

 20060D

 000000

 CEAFB5

 CEAFB5

 CE9AA4

 CEC4C6

 CE8694

 CED8D6

 CE7183

 CEDEE7

 CE5D73

 CEFFF7

 CE4862

 CEFFFF

 CE3351

 CE1F41

 CE0A30

 CE0028

Harmonies

Analogous

The Analogous color harmony consists of three colors that are next to each other on the color wheel.



C7B0C0



CEAFB5



CEB0AA

Triad

The Triadic color harmony groups three colors that are evenly spaced from another and form a triangle on the color wheel.



CEAFB5



B1BAA4



A1BACB

Complementary

The Complementary color scheme is a pair of colors which are on the opposite of each other on the color wheel.



CEAFB5



AFCEC8

Split Complementary

Split-complementary colors differ from the complementary color scheme. The scheme consists of three colors, the original color and two neighbors of the complement color.



9BBDC3



CEAFB5



A5BCAD

Square

The Square scheme is like the rectangle color scheme, but the four colors are evenly spaced on the color wheel.



CEAFB5



BEB6A0



9CBDB8



ADB7CD

Rectangle

The Rectangle color scheme consists of four colors that form a rectangle on the color wheel.



CEAFB5



CBB2A5



9CBDB8



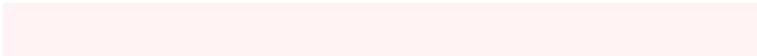
9EBBC9

Sweetspot

The Sweet Spot groups the original color and five complimentary colors.



CEAFB5



FFF2F5



C8AFCE



807879



000000



808080

Same Dimension

The Same Dimension uses a secret algorithm to generate beautiful new colors.



CEAFB5



FFD1DA



CEB8AF



665C5E



A60020



260007

Inverse Universe

The Inverse Universe completely reimagines the original color for something new.



CEAFB5



FFD1DA



AFC5CE



665C5E



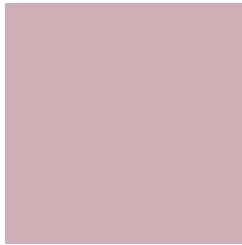
A60020



260007

Previews

White Background



This preview shows how the Hex color CEAFB5 looks on a white background.

Color Contrast Check

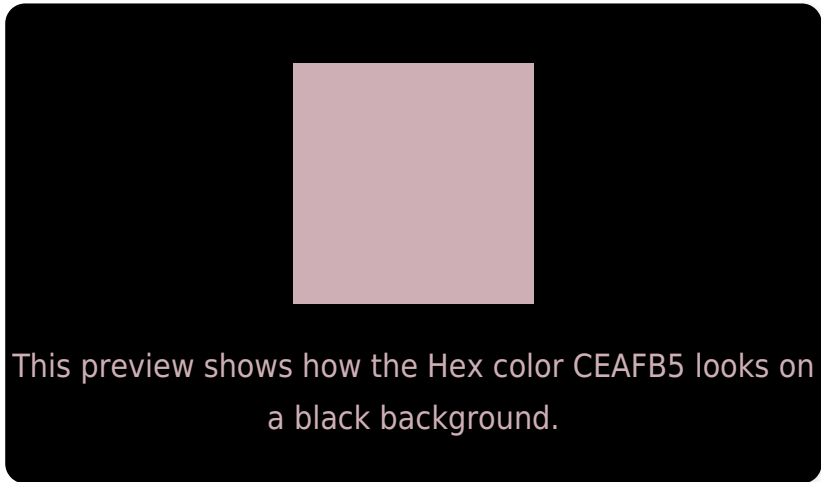
Large Text (above 18pt) WCAG AA × Fail

Any Text WCAG AA × Fail

Large Text (above 18pt) WCAG AAA × Fail

Any Text WCAG AAA × Fail

Black Background



Color Contrast Check

Large Text (above 18pt) WCAG AA ✓ Pass

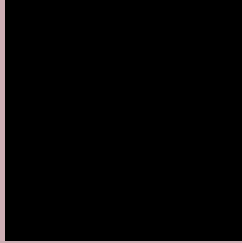
Any Text WCAG AA ✓ Pass

Large Text (above 18pt) WCAG AAA ✓ Pass

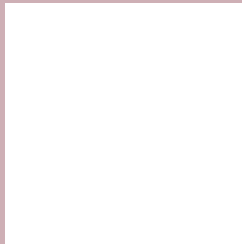
Any Text WCAG AAA ✓ Pass

If you want to check with other color combinations, try the [Color Contrast Checker](#).

Hex CEAFB5 Background



This preview shows how black text looks on a background with the Hex color CEAFB5.

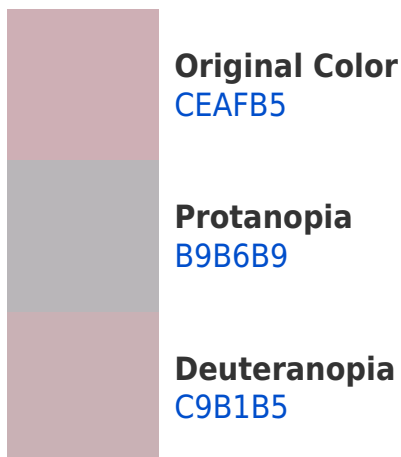


This preview shows how white text looks on a background with the Hex color CEAFB5.

Color Blindness Simulation

Color vision deficiency is a very complex topic, and I could not describe the different causes any better than Wikipedia does, so if you want to learn more, you should check out their [article about color blindness](#).

Dichromacy



Trichromacy



Original Color
CEAFB5

Protanomaly
C1B3B8

Deuteranomaly
CBB0B5

Tritanomaly
CFAEB9

Monochromacy



Original Color
CEAFB5

Achromatopsia
B9B9B9

Achromatomaly
C1B5B8

CSS Examples

Text

The CSS property to change the color of the text to Hex CEAFB5 is called "color". The color property can be set on classes, ids or directly on the HTML element.

This example shows how text in the color #CEAFB5 looks like.

```
.text, #text, p{  
    color:#CEAFB5  
}
```

If you want to add a text shadow in that color use the text-shadow property, you can generate a text shadow directly with our [CSS Text Shadow Generator](#).

Here you see how black text with a 4 pixel #CEAFB5 colored shadow looks like.

```
.shadow{ text-shadow: 4px 4px 2px #CEAFB5 }  
}
```

Border

The CSS property to change the border of an element to Hex CEAFB5 is called "border". The border property can be set on classes, ids or directly on the HTML element.

This example shows the color as border, it can be applied via the CSS property "border" or "border-color".

```
.border, #border, table{ border:4px solid #CEAFB5 }  
}
```

If only the border color should be changed use the property `border-color`.

```
.border{ border-color:#CEAFB5 }
```

If you want to add a box shadow in that color use:

Here you see how a box with a 4 pixel #CEAFB5 colored shadow looks like.

```
.boxshadow{ -moz-box-shadow:4px 4px 4px  
4px #CEAFB5; -webkit-box-shadow:4px 4px  
4px 4px #CEAFB5; box-shadow:4px 4px 4px  
4px #CEAFB5 }
```

Background

The CSS property to change the background color of an element to Hex CEAFB5 is called "background". The background property can be set on classes, ids or directly on the HTML element.

```
.background, #background, body{  
background:#CEAFB5 }
```

If only the background color should be changed can be used:

```
.background{ background-color:#CEAFB5 }
```

This example shows the color as background, it is applied via the CSS property "background".

To optimize and compress your CSS code, you can use our [online CSS compressor and optimizer](#) based on csstidy. If you want to create a linear or radial gradient as background or border, check our [CSS Gradient Generator](#).

Hey! You found this booklet interesting? Support Converting Colors with the new Membership Option!

The pro membership hides all ads, plus gives you double the colors in the color bucket, and more awesome pro features!

[Learn more, Memberships starting at \\$2.50/m!](#)

**Follow me
on Twitter!**

@ConvertingColor