

Converting Colors

Hex(CEB5B9)

Have a look what the booklet for
Hex(CEB5B9) contains.

Hex(CEB5B9)	3
<i>Conversions</i>	4
<i>Details</i>	6
<i>Harmonies</i>	11
<i>Previews</i>	23
<i>Color Blindness Simulation</i>	26
<i>CSS Examples</i>	29

Color

Hex(CEB5B9)

Conversions

Conversions Part 1

Format	Color
Hex	CEB5B9
RGB	206, 181, 185
RGB Percent	81%, 71%, 73%
CMY	0.1922, 0.2902, 0.2745
CMYK	0.00, 0.12, 0.10, 0.19
HSL	350°, 20%, 76%
HSV	350°, 12%, 81%
XYZ	50.7344, 49.6723, 52.8127
YIQ	188.9310, 13.6160, 6.5440

Conversions

Conversions Part 2

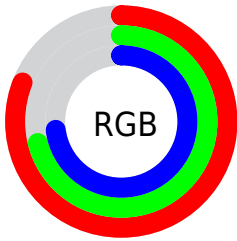
Format	Color
R _Y B	206, 181, 185
Decimal	13546937
CIE Lab	75.87, 9.61, 1.25
CIE LCh	76, 9.694, 7.419
Yxy	49.6723, 0.3311, 0.3242
Android (android.graphics.Color)	4291737017 (0xFFCEB5B9)
YUV	188.9310, -1.9380, 14.9695
Hunter-Lab	70.4786, 5.1567, 4.9065

Details

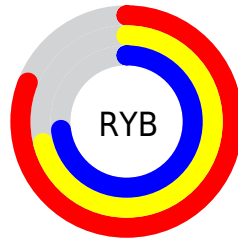
The Hex color **CEB5B9** is a light color, and the websafe version is hex **CCCCCC**. A complement of this color would be **B5CECA**, and the grayscale version is **BDBDBD**.

A 20% lighter version of the original color is **FFEDF1**, and **988084** is the 20% darker color. If you saturate the color by 10%, you get **CEA0A8**, and if you desaturate by 10%, it is **CECACA**.

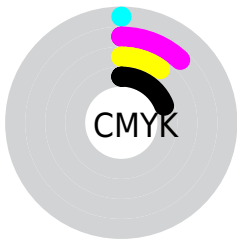
Distribution



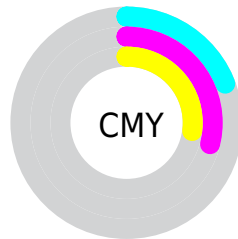
- Red (81%)
- Green (71%)
- Blue (73%)



- Red (81%)
- Yellow (71%)
- Blue (73%)



- Cyan (0%)
- Magenta (12%)
- Yellow (10%)
- Black (19%)



- Cyan (19%)
- Magenta (29%)
- Yellow (27%)

Brightness & Saturation Gradients

These gradients show how the Hex color CEB5B9 changes by changing the brightness by 10 percent. The first figure shows a shift by +10% for each color and the second figure -10%.

Similar to the brightness gradients but the following saturation gradients show a change of the Hex color CEB5B9 by changing the saturation by 10% instead.

 CEB5B9

FFFFFF

 FFEDF1

 CEB5B9

 B29A9E

 988084

 7E676B

 644F53

 4C383C

 352226

 200D11

 000000

 CEB5B9

 CEB5B9

 CEA0A8

 CECACA

 CE8C96

 CEDEDC

 CE7785

 CEF3ED

 CE6374

 CEFFFE

 CE4E62

 CEFFFF

 CE3951

 CE2540

 CE102F

 CE0021

Harmonies

Analogous

The Analogous color harmony consists of three colors that are next to each other on the color wheel.



C9B6C2



CEB5B9



CEB6B0

Triad

The Triadic color harmony groups three colors that are evenly spaced from another and form a triangle on the color wheel.



CEB5B9



B6BEAD



ABBECB

Complementary

The Complementary color scheme is a pair of colors which are on the opposite of each other on the color wheel.



CEB5B9



B5CECA

Split Complementary

Split-complementary colors differ from the complementary color scheme. The scheme consists of three colors, the original color and two neighbors of the complement color.



A5C0C5



CEB5B9



ACC0B4

Square

The Square scheme is like the rectangle color scheme, but the four colors are evenly spaced on the color wheel.



CEB5B9



C0BBA9



A6C0BD



B4BBCD

Rectangle

The Rectangle color scheme consists of four colors that form a rectangle on the color wheel.



CEB5B9



CBB7AC



A6C0BD



A8BFCA

Sweetspot

The Sweet Spot groups the original color and five complimentary colors.



CEB5B9



FFF5F6



CAB5CE



80797A



000000



808080

Same Dimension

The Same Dimension uses a secret algorithm to generate beautiful new colors.



CEB5B9



FFD9DF



CEBDB5



665C5D



A6001B



260006

Inverse Universe

The Inverse Universe completely reimagines the original color for something new.



CEB5B9



FFD9DF



B5C6CE



665C5D



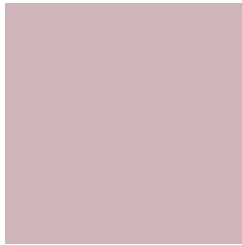
A6001B



260006

Previews

White Background



This preview shows how the Hex color CEB5B9 looks on a white background.

Color Contrast Check

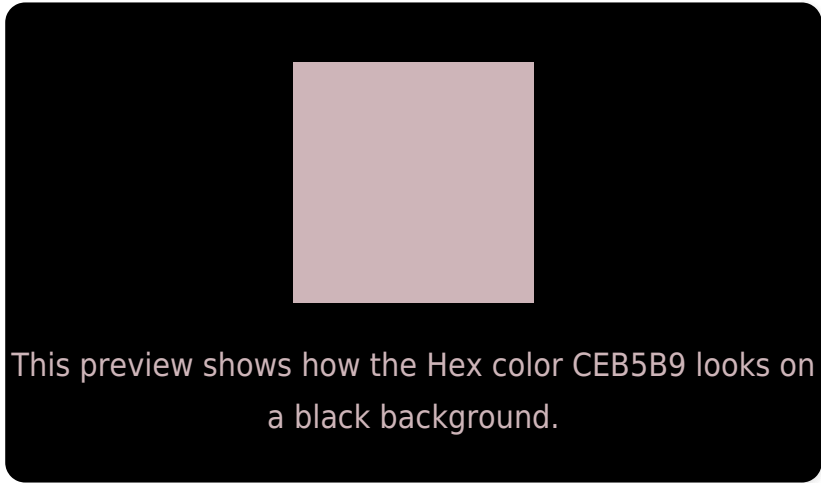
Large Text (above 18pt) WCAG AA × Fail

Any Text WCAG AA × Fail

Large Text (above 18pt) WCAG AAA × Fail

Any Text WCAG AAA × Fail

Black Background



Color Contrast Check

Large Text (above 18pt) WCAG AA ✓ Pass

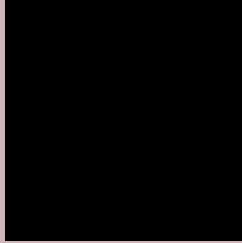
Any Text WCAG AA ✓ Pass

Large Text (above 18pt) WCAG AAA ✓ Pass

Any Text WCAG AAA ✓ Pass

If you want to check with other color combinations, try the [Color Contrast Checker](#).

Hex CEB5B9 Background



This preview shows how black text looks on a background with the Hex color CEB5B9.

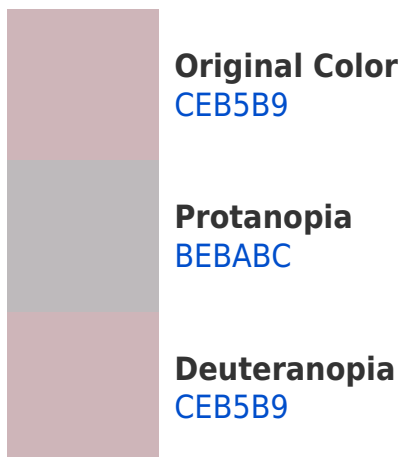


This preview shows how white text looks on a background with the Hex color CEB5B9.

Color Blindness Simulation

Color vision deficiency is a very complex topic, and I could not describe the different causes any better than Wikipedia does, so if you want to learn more, you should check out their [article about color blindness](#).

Dichromacy





Tritanopia
CFB4C2

Trichromacy



Original Color
CEB5B9

Protanomaly
C4B8BB

Deuteranomaly
CEB5B9

Tritanomaly
CFB4BF

Monochromacy



Original Color
CEB5B9

Achromatopsia
BDBDBD

Achromatomaly
C3BABC

CSS Examples

Text

The CSS property to change the color of the text to Hex CEB5B9 is called "color". The color property can be set on classes, ids or directly on the HTML element.

This example shows how text in the color #CEB5B9 looks like.

```
.text, #text, p{  
    color:#CEB5B9  
}
```

If you want to add a text shadow in that color use the text-shadow property, you can generate a text shadow directly with our [CSS Text Shadow Generator](#).

Here you see how black text with a 4 pixel #CEB5B9 colored shadow looks like.

```
.shadow{ text-shadow: 4px 4px 2px #CEB5B9
}
```

Border

The CSS property to change the border of an element to Hex CEB5B9 is called "border". The border property can be set on classes, ids or directly on the HTML element.

This example shows the color as border, it can be applied via the CSS property "border" or "border-color".

```
.border, #border, table{ border:4px solid
#CEB5B9 }
```

If only the border color should be changed use the property `border-color`.

```
.border{ border-color:#CEB5B9 }
```

If you want to add a box shadow in that color use:

Here you see how a box with a 4 pixel #CEB5B9 colored shadow looks like.

```
.boxshadow{ -moz-box-shadow:4px 4px 4px  
4px #CEB5B9; -webkit-box-shadow:4px 4px  
4px 4px #CEB5B9; box-shadow:4px 4px 4px  
4px #CEB5B9 }
```

Background

The CSS property to change the background color of an element to Hex CEB5B9 is called "background". The background property can be set on classes, ids or directly on the HTML element.

```
.background, #background, body{  
background:#CEB5B9 }
```

If only the background color should be changed can be used:

```
.background{ background-color:#CEB5B9 }
```

This example shows the color as background, it is applied via the CSS property "background".

To optimize and compress your CSS code, you can use our [online CSS compressor and optimizer](#) based on csstidy. If you want to create a linear or radial gradient as background or border, check our [CSS Gradient Generator](#).

Hey! You found this booklet interesting? Support Converting Colors with the new Membership Option!

The pro membership hides all ads, plus gives you double the colors in the color bucket, and more awesome pro features!

[Learn more, Memberships starting at \\$2.50/m!](#)

**Follow me
on Twitter!**

@ConvertingColor