

# Converting Colors

Hex(CEB6B9)

Have a look what the booklet for  
Hex(CEB6B9) contains.

<b>Hex(CEB6B9)</b> .....	3
<i><b>Conversions</b></i> .....	4
<i><b>Details</b></i> .....	6
<i><b>Harmonies</b></i> .....	11
<i><b>Previews</b></i> .....	23
<i><b>Color Blindness Simulation</b></i> .....	26
<i><b>CSS Examples</b></i> .....	29

# **Color**

**Hex(CEB6B9)**

# Conversions

## Conversions Part 1

Format	Color
Hex	CEB6B9
RGB	206, 182, 185
RGB Percent	81%, 71%, 73%
CMY	0.1922, 0.2863, 0.2745
CMYK	0.00, 0.12, 0.10, 0.19
HSL	352°, 20%, 76%
HSV	352°, 12%, 81%
XYZ	50.9385, 50.0805, 52.8807
YIQ	189.5180, 13.3410, 6.0210

# Conversions

## Conversions Part 2

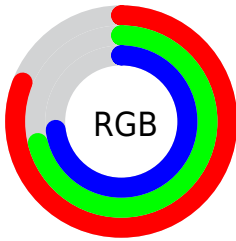
<b>Format</b>	<b>Color</b>
R <sub>Y</sub> B	206, 182, 185
Decimal	13547193
CIE Lab	76.12, 9.07, 1.62
CIE LCh	76, 9.217, 10.103
Yxy	50.0805, 0.3310, 0.3254
Android (android.graphics.Color)	4291737273 (0xFFCEB6B9)
YUV	189.5180, -2.2274, 14.4547
Hunter-Lab	70.7676, 4.6411, 5.2332

# Details

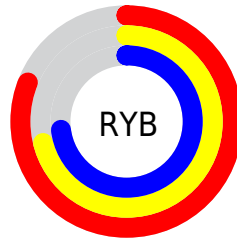
The Hex color **CEB6B9** is a light color, and the websafe version is hex **CCCCCC**. A complement of this color would be **B6CECB**, and the grayscale version is **BEBEBE**.

A 20% lighter version of the original color is **FFEEF1**, and **988184** is the 20% darker color. If you saturate the color by 10%, you get **CEA1A7**, and if you desaturate by 10%, it is **CECBCB**.

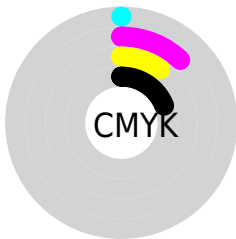
# Distribution



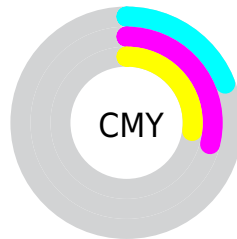
- Red (81%)
- Green (71%)
- Blue (73%)



- Red (81%)
- Yellow (71%)
- Blue (73%)



- Cyan (0%)
- Magenta (12%)
- Yellow (10%)
- Black (19%)



- Cyan (19%)
- Magenta (29%)
- Yellow (27%)

# Brightness & Saturation Gradients

These gradients show how the Hex color CEB6B9 changes by changing the brightness by 10 percent. The first figure shows a shift by +10% for each color and the second figure -10%.

Similar to the brightness gradients but the following saturation gradients show a change of the Hex color CEB6B9 by changing the saturation by 10% instead.



 CEB6B9

 CEB6B9

FFFFFF

 B29B9E

 FFEEF1

 988184

 7E686B

 645053

 4C393C

 352326

 200E11

 000000

 CEB6B9

 CEB6B9

 CEA1A7

 CECBCB

 CE8D95

 CEDFDD

 CE7883

 CEF4EF

 CE6471

 CEFFFF

 CE4F5F

 CE3A4D

 CE263B

 CE1129

 CE001A

# Harmonies

## Analogous

The Analogous color harmony consists of three colors that are next to each other on the color wheel.



CAB7C2



CEB6B9



CDB7B1

# Triad

The Triadic color harmony groups three colors that are evenly spaced from another and form a triangle on the color wheel.



CEB6B9



B6BFAF



ADBECB

# Complementary

The Complementary color scheme is a pair of colors which are on the opposite of each other on the color wheel.



CEB6B9



B6CECB

# Split Complementary

Split-complementary colors differ from the complementary color scheme. The scheme consists of three colors, the original color and two neighbors of the complement color.



A7C0C6



CEB6B9



ADC0B6

# Square

The Square scheme is like the rectangle color scheme, but the four colors are evenly spaced on the color wheel.



CEB6B9



C0BCAB



A8C1BE



B6BBCC

# Rectangle

The Rectangle color scheme consists of four colors that form a rectangle on the color wheel.



CEB6B9



CBB8AD



A8C1BE



ABBFCA



# Sweetspot

The Sweet Spot groups the original color and five complimentary colors.



CEB6B9



FFF7F8



CBB6CE



807A7B



000000



808080



# Same Dimension

The Same Dimension uses a secret algorithm to generate beautiful new colors.



CEB6B9



FFDBE0



CEBFB6



665C5D



A60015



260005



# Inverse Universe

The Inverse Universe completely reimagines the original color for something new.



CEB6B9



FFDBE0



B6C5CE



665C5D



A60015

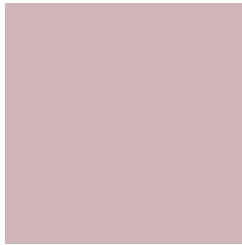


260005



# Previews

## White Background



This preview shows how the Hex color CEB6B9 looks on a white background.

## Color Contrast Check

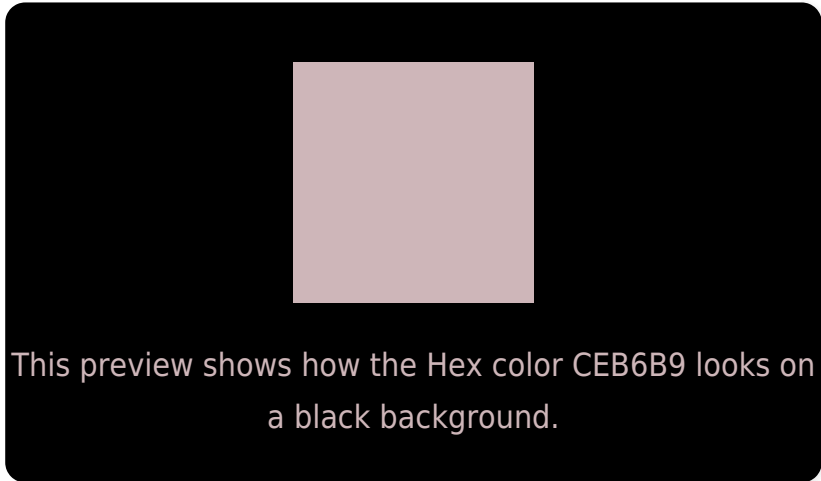
Large Text (above 18pt) WCAG AA × Fail

Any Text WCAG AA × Fail

Large Text (above 18pt) WCAG AAA × Fail

Any Text WCAG AAA × Fail

# Black Background



## Color Contrast Check

Large Text (above 18pt) WCAG AA ✓ Pass

Any Text WCAG AA ✓ Pass

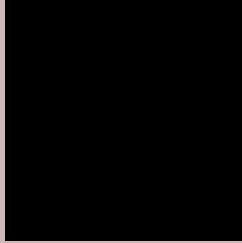
Large Text (above 18pt) WCAG AAA ✓ Pass

Any Text WCAG AAA ✓ Pass

If you want to check with other color combinations, try the [Color Contrast Checker](#).



## Hex CEB6B9 Background



This preview shows how black text looks on a background with the Hex color CEB6B9.



This preview shows how white text looks on a background with the Hex color CEB6B9.

# Color Blindness Simulation

Color vision deficiency is a very complex topic, and I could not describe the different causes any better than Wikipedia does, so if you want to learn more, you should check out their [article about color blindness](#).

## Dichromacy

	<b>Original Color</b> CEB6B9
	<b>Protanopia</b> BFBBBC
	<b>Deuteranopia</b> CFB6B9



**Tritanopia**  
CFB4C3

# Trichromacy



**Original Color**  
CEB6B9

**Protanomaly**  
C4B9BB

**Deuteranomaly**  
CFB6B9

**Tritanomaly**  
CFB5BF

# Monochromacy



**Original Color**  
CEB6B9

**Achromatopsia**  
BEBEBE

**Achromatomaly**  
C4BBBC

# CSS Examples

## Text

The CSS property to change the color of the text to Hex CEB6B9 is called "color". The color property can be set on classes, ids or directly on the HTML element.

This example shows how text in the color #CEB6B9 looks like.

```
.text, #text, p{  
    color:#CEB6B9  
}
```

If you want to add a text shadow in that color use the text-shadow property, you can generate a text shadow directly with our [CSS Text Shadow Generator](#).

Here you see how black text with a 4 pixel #CEB6B9 colored shadow looks like.

```
.shadow{ text-shadow: 4px 4px 2px #CEB6B9
}
```

## Border

The CSS property to change the border of an element to Hex CEB6B9 is called "border". The border property can be set on classes, ids or directly on the HTML element.

This example shows the color as border, it can be applied via the CSS property "border" or "border-color".

```
.border, #border, table{ border:4px solid
#CEB6B9 }
```

If only the border color should be changed use the property `border-color`.

```
.border{ border-color:#CEB6B9 }
```

If you want to add a box shadow in that color use:

Here you see how a box with a 4 pixel #CEB6B9 colored shadow looks like.

```
.boxshadow{ -moz-box-shadow:4px 4px 4px  
4px #CEB6B9; -webkit-box-shadow:4px 4px  
4px 4px #CEB6B9; box-shadow:4px 4px 4px  
4px #CEB6B9 }
```

# Background

The CSS property to change the background color of an element to Hex CEB6B9 is called "background". The background property can be set on classes, ids or directly on the HTML element.

```
.background, #background, body{  
background:#CEB6B9 }
```

If only the background color should be changed can be used:

```
.background{ background-color:#CEB6B9 }
```

This example shows the color as background, it is applied via the CSS property "background".

To optimize and compress your CSS code, you can use our [online CSS compressor and optimizer](#) based on csstidy. If you want to create a linear or radial gradient as background or border, check our [CSS Gradient Generator](#).



Hey! You found this booklet interesting? Support Converting Colors with the new Membership Option!

The pro membership hides all ads, plus gives you double the colors in the color bucket, and more awesome pro features!

**[Learn more, Memberships starting at \\$2.50/m!](#)**

**Follow me  
on Twitter!**

@ConvertingColor