

Converting Colors

Hex(CEB7AC)

Have a look what the booklet for
Hex(CEB7AC) contains.

Hex(CEB7AC)	3
<i>Conversions</i>	4
<i>Details</i>	6
<i>Harmonies</i>	11
<i>Previews</i>	23
<i>Color Blindness Simulation</i>	26
<i>CSS Examples</i>	29

Color

Hex(CEB7AC)

Conversions

Conversions Part 1

Format	Color
Hex	CEB7AC
RGB	206, 183, 172
RGB Percent	81%, 72%, 67%
CMY	0.1922, 0.2824, 0.3255
CMYK	0.00, 0.11, 0.17, 0.19
HSL	19°, 26%, 74%
HSV	19°, 17%, 81%
XYZ	49.8335, 49.9673, 46.0479
YIQ	188.6230, 17.2390, 1.4550

Conversions

Conversions Part 2

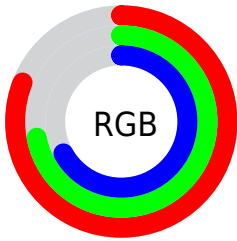
Format	Color
R _Y B	206, 188, 172
Decimal	13547436
CIE Lab	76.05, 6.41, 8.58
CIE LCh	76, 10.715, 53.225
Yxy	49.9673, 0.3417, 0.3426
Android (android.graphics.Color)	4291737516 (0xFFCEB7AC)
YUV	188.6230, -8.1951, 15.2396
Hunter-Lab	70.6876, 2.1360, 10.8581

Details

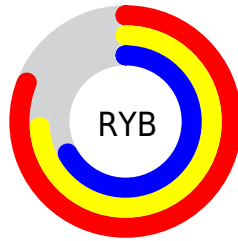
The Hex color **CEB7AC** is a light color, and the websafe version is hex **CCCCCC**. A complement of this color would be **ACC3CE**, and the grayscale version is **BDBDBD**.

A 20% lighter version of the original color is **FFEFE3**, and **978278** is the 20% darker color. If you saturate the color by 10%, you get **CEA997**, and if you desaturate by 10%, it is **CEC5C1**.

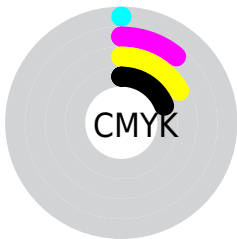
Distribution



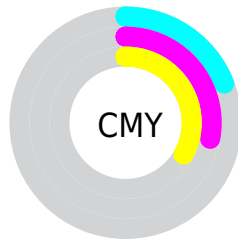
- Red (81%)
- Green (72%)
- Blue (67%)



- Red (81%)
- Yellow (74%)
- Blue (67%)



- Cyan (0%)
- Magenta (11%)
- Yellow (17%)
- Black (19%)



- Cyan (19%)
- Magenta (28%)
- Yellow (33%)

Brightness & Saturation Gradients

These gradients show how the Hex color CEB7AC changes by changing the brightness by 10 percent. The first figure shows a shift by +10% for each color and the second figure -10%.

Similar to the brightness gradients but the following saturation gradients show a change of the Hex color CEB7AC by changing the saturation by 10% instead.

 CEB7AC

 CEB7AC

FFFFFF

 B29C91

 FFEFE3

 978278

 7D695F

 645147

 4C3A31

 35241C

 200F01

 000000

 CEB7AC

 CEB7AC

 CEA997

 CEC5C1

 CE9B83

 CED3D5

 CE8D6E

 CEE1EA

 CE7F5A

 CEEFFE

 CE7145

 CEFDFE

 CE6330

 CEFFFF

 CE551C

 CE4807

 CE4300

Harmonies

Analogous

The Analogous color harmony consists of three colors that are next to each other on the color wheel.



D1B5B4



CEB7AC



C6BAA8

Triad

The Triadic color harmony groups three colors that are evenly spaced from another and form a triangle on the color wheel.



CEB7AC



A7C1B9



BBBACE

Complementary

The Complementary color scheme is a pair of colors which are on the opposite of each other on the color wheel.



CEB7AC



ACC3CE

Split Complementary

Split-complementary colors differ from the complementary color scheme. The scheme consists of three colors, the original color and two neighbors of the complement color.



AFBDCF



CEB7AC



A3C1C3

Square

The Square scheme is like the rectangle color scheme, but the four colors are evenly spaced on the color wheel.



CEB7AC



B0C0AF



A6C0CB



C6B7C7

Rectangle

The Rectangle color scheme consists of four colors that form a rectangle on the color wheel.



CEB7AC



BFBCA8



A6C0CB



B7BBCF

Sweetspot

The Sweet Spot groups the original color and five complimentary colors.



CEB7AC



FFF6F2



CEACC3



807A78



000000



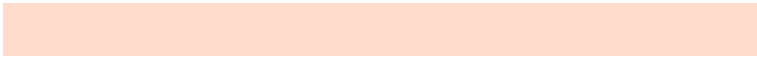
808080

Same Dimension

The Same Dimension uses a secret algorithm to generate beautiful new colors.



CEB7AC



FFDCCC



CEC8AC



665F5C



A63600



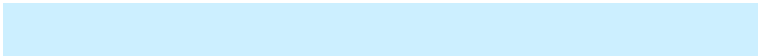
260C00

Inverse Universe

The Inverse Universe completely reimagines the original color for something new.



ACC3CE



CCEFFF



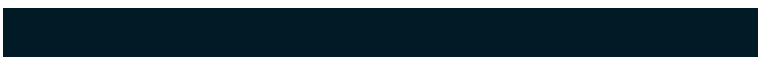
ACB2CE



5C6366



0070A6



001A26

Previews

White Background



This preview shows how the Hex color CEB7AC looks on a white background.

Color Contrast Check

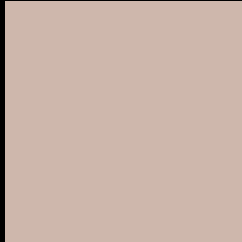
Large Text (above 18pt) WCAG AA × Fail

Any Text WCAG AA × Fail

Large Text (above 18pt) WCAG AAA × Fail

Any Text WCAG AAA × Fail

Black Background



This preview shows how the Hex color CEB7AC looks on a black background.

Color Contrast Check

Large Text (above 18pt) WCAG AA ✓ Pass

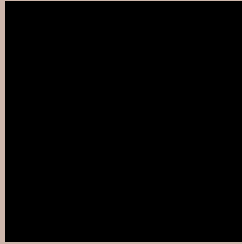
Any Text WCAG AA ✓ Pass

Large Text (above 18pt) WCAG AAA ✓ Pass

Any Text WCAG AAA ✓ Pass

If you want to check with other color combinations, try the [Color Contrast Checker](#).

Hex CEB7AC Background



This preview shows how black text looks on a background with the Hex color CEB7AC.

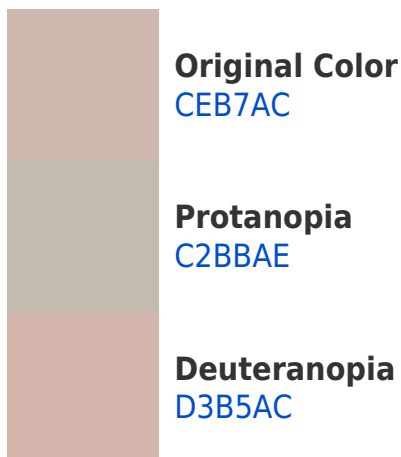


This preview shows how white text looks on a background with the Hex color CEB7AC.

Color Blindness Simulation

Color vision deficiency is a very complex topic, and I could not describe the different causes any better than Wikipedia does, so if you want to learn more, you should check out their [article about color blindness](#).

Dichromacy





Tritanopia
D1B4C2

Trichromacy



Original Color
CEB7AC

Protanomaly
C6BAAD

Deuteranomaly
D1B6AC

Tritanomaly
D0B5BA

Monochromacy



Original Color
CEB7AC

Achromatopsia
BDBDBD

Achromatomaly
C3BBB7

CSS Examples

Text

The CSS property to change the color of the text to Hex CEB7AC is called "color". The color property can be set on classes, ids or directly on the HTML element.

This example shows how text in the color #CEB7AC looks like.

```
.text, #text, p{  
    color:#CEB7AC  
}
```

If you want to add a text shadow in that color use the text-shadow property, you can generate a text shadow directly with our [CSS Text Shadow Generator](#).

Here you see how black text with a 4 pixel #CEB7AC colored shadow looks like.

```
.shadow{ text-shadow: 4px 4px 2px #CEB7AC }  
}
```

Border

The CSS property to change the border of an element to Hex CEB7AC is called "border". The border property can be set on classes, ids or directly on the HTML element.

This example shows the color as border, it can be applied via the CSS property "border" or "border-color".

```
.border, #border, table{ border:4px solid #CEB7AC }  
}
```

If only the border color should be changed use the property `border-color`.

```
.border{ border-color:#CEB7AC }
```

If you want to add a box shadow in that color use:

Here you see how a box with a 4 pixel #CEB7AC colored shadow looks like.

```
.boxshadow{ -moz-box-shadow:4px 4px 4px  
4px #CEB7AC; -webkit-box-shadow:4px 4px  
4px 4px #CEB7AC; box-shadow:4px 4px 4px  
4px #CEB7AC }
```

Background

The CSS property to change the background color of an element to Hex CEB7AC is called "background". The background property can be set on classes, ids or directly on the HTML element.

```
.background, #background, body{  
background:#CEB7AC }
```

If only the background color should be changed can be used:

```
.background{ background-color:#CEB7AC }
```

This example shows the color as background, it is applied via the CSS property "background".

To optimize and compress your CSS code, you can use our [online CSS compressor and optimizer](#) based on csstidy. If you want to create a linear or radial gradient as background or border, check our [CSS Gradient Generator](#).

Hey! You found this booklet interesting? Support Converting Colors with the new Membership Option!

The pro membership hides all ads, plus gives you double the colors in the color bucket, and more awesome pro features!

[Learn more, Memberships starting at \\$2.50/m!](#)

**Follow me
on Twitter!**

@ConvertingColor