

Converting Colors

Hex(CEB7AE)

Have a look what the booklet for
Hex(CEB7AE) contains.

Hex(CEB7AE)	3
<i>Conversions</i>	4
<i>Details</i>	6
<i>Harmonies</i>	11
<i>Previews</i>	23
<i>Color Blindness Simulation</i>	26
<i>CSS Examples</i>	29

Color

Hex(CEB7AE)

Conversions

Conversions Part 1

Format	Color
Hex	CEB7AE
RGB	206, 183, 174
RGB Percent	81%, 72%, 68%
CMY	0.1922, 0.2824, 0.3176
CMYK	0.00, 0.11, 0.16, 0.19
HSL	17°, 25%, 75%
HSV	17°, 16%, 81%
XYZ	50.0271, 50.0448, 47.0673
YIQ	188.8510, 16.5970, 2.0770

Conversions

Conversions Part 2

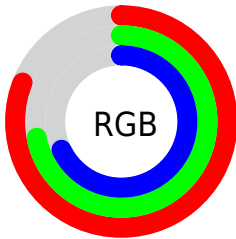
Format	Color
R _Y B	206, 187, 174
Decimal	13547438
CIE Lab	76.10, 6.73, 7.56
CIE LCh	76, 10.126, 48.337
Yxy	50.0448, 0.3400, 0.3401
Android (android.graphics.Color)	4291737518 (0xFFCEB7AE)
YUV	188.8510, -7.3215, 15.0397
Hunter-Lab	70.7423, 2.4313, 10.0720

Details

The Hex color **CEB7AE** is a light color, and the websafe version is hex **CCCCCC**. A complement of this color would be **AEC5CE**, and the grayscale version is **BDBDBD**.

A 20% lighter version of the original color is **FFEFE5**, and **97827A** is the 20% darker color. If you saturate the color by 10%, you get **CEA899**, and if you desaturate by 10%, it is **CEC6C3**.

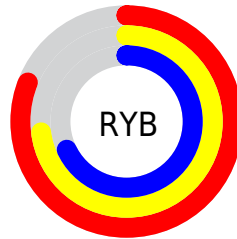
Distribution



Red (81%)

Green (72%)

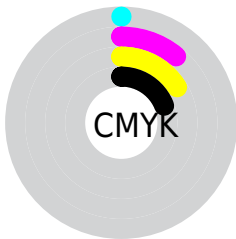
Blue (68%)



Red (81%)

Yellow (73%)

Blue (68%)

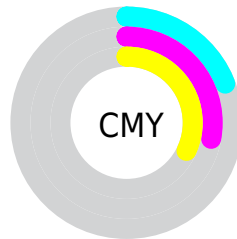


Cyan (0%)

Magenta (11%)

Yellow (16%)

Black (19%)



Cyan (19%)

Magenta (28%)

Yellow (32%)

Brightness & Saturation Gradients

These gradients show how the Hex color CEB7AE changes by changing the brightness by 10 percent. The first figure shows a shift by +10% for each color and the second figure -10%.

Similar to the brightness gradients but the following saturation gradients show a change of the Hex color CEB7AE by changing the saturation by 10% instead.

 CEB7AE

 CEB7AE

FFFFFF

 B29C93

 FFEFE5

 97827A

 7D6961

 645149

 4C3A33

 35241E

 200F04

 000000

 CEB7AE

 CEB7AE

 CEA899

 CEC6C3

 CE9985

 CED5D7

 CE8B70

 CEE3EC

 CE7C5C

 CEF2FF

 CE6D47

 CEFFFF

 CE5E32

 CE4F1E

 CE4109

 CE3A00

Harmonies

Analogous

The Analogous color harmony consists of three colors that are next to each other on the color wheel.



D0B5B6



CEB7AE



C7BAAA

Triad

The Triadic color harmony groups three colors that are evenly spaced from another and form a triangle on the color wheel.



CEB7AE



A9C1B8



B9BACD

Complementary

The Complementary color scheme is a pair of colors which are on the opposite of each other on the color wheel.



CEB7AE



AEC5CE

Split Complementary

Split-complementary colors differ from the complementary color scheme. The scheme consists of three colors, the original color and two neighbors of the complement color.



AEBECE



CEB7AE



A5C1C1

Square

The Square scheme is like the rectangle color scheme, but the four colors are evenly spaced on the color wheel.



CEB7AE



B2BFAF



A6C0C9



C4B8C8

Rectangle

The Rectangle color scheme consists of four colors that form a rectangle on the color wheel.



CEB7AE



C1BCA9



A6C0C9



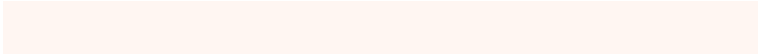
B5BCCE

Sweetspot

The Sweet Spot groups the original color and five complimentary colors.



CEB7AE



FFF6F2



CEAEC5



807A78



000000



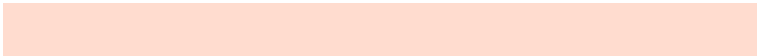
808080

Same Dimension

The Same Dimension uses a secret algorithm to generate beautiful new colors.



CEB7AE



FFDCCF



CEC7AE



665F5C



A62F00



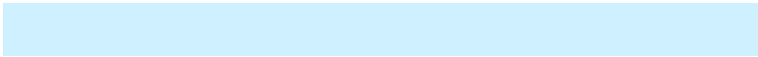
260B00

Inverse Universe

The Inverse Universe completely reimagines the original color for something new.



AEC5CE



CFF1FF



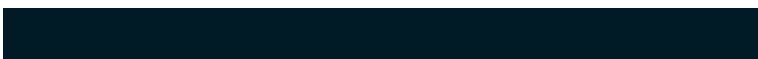
AEB5CE



5C6366



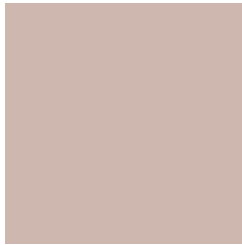
0077A6



001B26

Previews

White Background



This preview shows how the Hex color CEB7AE looks on a white background.

Color Contrast Check

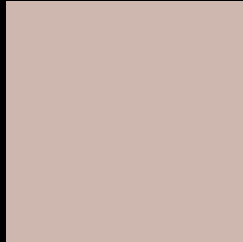
Large Text (above 18pt) WCAG AA × Fail

Any Text WCAG AA × Fail

Large Text (above 18pt) WCAG AAA × Fail

Any Text WCAG AAA × Fail

Black Background



This preview shows how the Hex color CEB7AE looks on a black background.

Color Contrast Check

Large Text (above 18pt) WCAG AA ✓ Pass

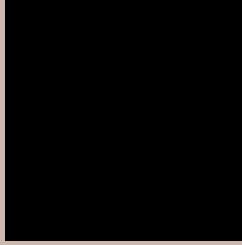
Any Text WCAG AA ✓ Pass

Large Text (above 18pt) WCAG AAA ✓ Pass

Any Text WCAG AAA ✓ Pass

If you want to check with other color combinations, try the [Color Contrast Checker](#).

Hex CEB7AE Background



This preview shows how black text looks on a background with the Hex color CEB7AE.



This preview shows how white text looks on a background with the Hex color CEB7AE.

Color Blindness Simulation

Color vision deficiency is a very complex topic, and I could not describe the different causes any better than Wikipedia does, so if you want to learn more, you should check out their [article about color blindness](#).

Dichromacy



Original Color
CEB7AE

Protanopia
C2BBB0

Deuteranopia
D3B5AE



Tritanopia
D1B4C2

Trichromacy



Monochromacy



CSS Examples

Text

The CSS property to change the color of the text to Hex CEB7AE is called "color". The color property can be set on classes, ids or directly on the HTML element.

This example shows how text in the color #CEB7AE looks like.

```
.text, #text, p{  
    color:#CEB7AE  
}
```

If you want to add a text shadow in that color use the text-shadow property, you can generate a text shadow directly with our [CSS Text Shadow Generator](#).

Here you see how black text with a 4 pixel #CEB7AE colored shadow looks like.

```
.shadow{ text-shadow: 4px 4px 2px #CEB7AE
}
```

Border

The CSS property to change the border of an element to Hex CEB7AE is called "border". The border property can be set on classes, ids or directly on the HTML element.

This example shows the color as border, it can be applied via the CSS property "border" or "border-color".

```
.border, #border, table{ border:4px solid
#CEB7AE }
```

If only the border color should be changed use the property `border-color`.

```
.border{ border-color:#CEB7AE }
```

If you want to add a box shadow in that color use:

Here you see how a box with a 4 pixel #CEB7AE colored shadow looks like.

```
.boxshadow{ -moz-box-shadow:4px 4px 4px  
4px #CEB7AE; -webkit-box-shadow:4px 4px  
4px 4px #CEB7AE; box-shadow:4px 4px 4px  
4px #CEB7AE }
```

Background

The CSS property to change the background color of an element to Hex CEB7AE is called "background". The background property can be set on classes, ids or directly on the HTML element.

```
.background, #background, body{  
background:#CEB7AE }
```

If only the background color should be changed can be used:

```
.background{ background-color:#CEB7AE }
```

This example shows the color as background, it is applied via the CSS property "background".

To optimize and compress your CSS code, you can use our [online CSS compressor and optimizer](#) based on csstidy. If you want to create a linear or radial gradient as background or border, check our [CSS Gradient Generator](#).

Hey! You found this booklet interesting? Support Converting Colors with the new Membership Option!

The pro membership hides all ads, plus gives you double the colors in the color bucket, and more awesome pro features!

[Learn more, Memberships starting at \\$2.50/m!](#)

**Follow me
on Twitter!**

@ConvertingColor