

Converting Colors

Hex(CEB8A9)

Have a look what the booklet for
Hex(CEB8A9) contains.

Hex(CEB8A9)	3
<i>Conversions</i>	4
<i>Details</i>	6
<i>Harmonies</i>	11
<i>Previews</i>	23
<i>Color Blindness Simulation</i>	26
<i>CSS Examples</i>	29

Color

Hex(CEB8A9)

Conversions

Conversions Part 1

Format	Color
Hex	CEB8A9
RGB	206, 184, 169
RGB Percent	81%, 72%, 66%
CMY	0.1922, 0.2784, 0.3373
CMYK	0.00, 0.11, 0.18, 0.19
HSL	24°, 27%, 74%
HSV	24°, 18%, 81%
XYZ	49.7555, 50.2674, 44.6163
YIQ	188.8680, 17.9270, -0.0010

Conversions

Conversions Part 2

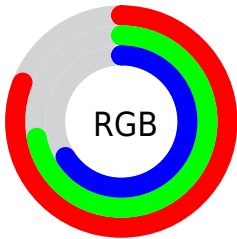
Format	Color
R _Y B	206, 194, 169
Decimal	13547689
CIE Lab	76.23, 5.41, 10.47
CIE LCh	76, 11.788, 62.670
Yxy	50.2674, 0.3440, 0.3475
Android (android.graphics.Color)	4291737769 (0xFFCEB8A9)
YUV	188.8680, -9.7949, 15.0248
Hunter-Lab	70.8995, 1.1928, 12.3191

Details

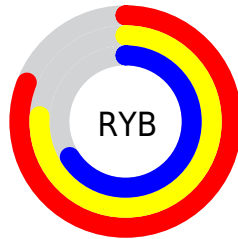
The Hex color **CEB8A9** is a light color, and the websafe version is hex **CCCCCC**. A complement of this color would be **A9BFCE**, and the grayscale version is **BDBDBD**.

A 20% lighter version of the original color is **FFF0E0**, and **978375** is the 20% darker color. If you saturate the color by 10%, you get **CEAC94**, and if you desaturate by 10%, it is **CEC4BE**.

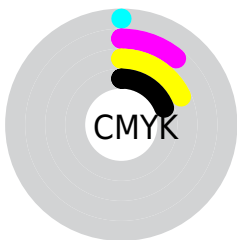
Distribution



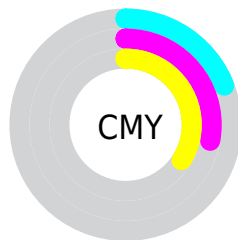
- Red (81%)
- Green (72%)
- Blue (66%)



- Red (81%)
- Yellow (76%)
- Blue (66%)



- Cyan (0%)
- Magenta (11%)
- Yellow (18%)
- Black (19%)



- Cyan (19%)
- Magenta (28%)
- Yellow (34%)

Brightness & Saturation Gradients

These gradients show how the Hex color CEB8A9 changes by changing the brightness by 10 percent. The first figure shows a shift by +10% for each color and the second figure -10%.

Similar to the brightness gradients but the following saturation gradients show a change of the Hex color CEB8A9 by changing the saturation by 10% instead.



CEB8A9



CEB8A9

FFFFFF



B29D8F



FFF0E0



978375

FFFFFFD



7D6A5C



645245



4C3B2E



34251A



211000



000000



CEB8A9



CEB8A9

 CEAC94

 CEC4BE

 CEA080

 CED0D2

 CE936B

 CEDDE7

 CE8757

 CEE9FB

 CE7B42

 CEF5FF

 CE6F2D

 CEFFFF

 CE6219

 CE5604

 CE5400

Harmonies

Analogous

The Analogous color harmony consists of three colors that are next to each other on the color wheel.



D3B5B1



CEB8A9



C4BCA6

Triad

The Triadic color harmony groups three colors that are evenly spaced from another and form a triangle on the color wheel.



CEB8A9



A3C3BD



BFB9CE

Complementary

The Complementary color scheme is a pair of colors which are on the opposite of each other on the color wheel.



CEB8A9



A9BFCE

Split Complementary

Split-complementary colors differ from the complementary color scheme. The scheme consists of three colors, the original color and two neighbors of the complement color.



B2BDD1



CEB8A9



A1C2C7

Square

The Square scheme is like the rectangle color scheme, but the four colors are evenly spaced on the color wheel.



CEB8A9



ACC1B2



A6C0CF



CBB6C6

Rectangle

The Rectangle color scheme consists of four colors that form a rectangle on the color wheel.



CEB8A9



BCBEA8



A6C0CF



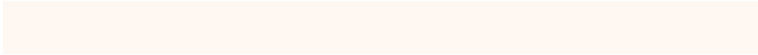
BBBAD0

Sweetspot

The Sweet Spot groups the original color and five complimentary colors.



CEB8A9



FFF7F2



CEA9BF



807B78



000000



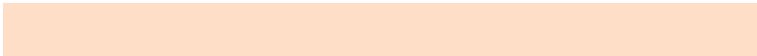
808080

Same Dimension

The Same Dimension uses a secret algorithm to generate beautiful new colors.



CEB8A9



FFDEC7



CECAA9



66605C



A64300



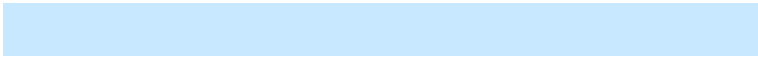
261000

Inverse Universe

The Inverse Universe completely reimagines the original color for something new.



A9BFCE



C7E8FF



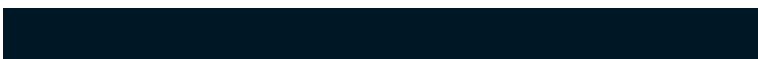
A9ADCE



5C6266



0063A6



001726

Previews

White Background



This preview shows how the Hex color CEB8A9 looks on a white background.

Color Contrast Check

Large Text (above 18pt) WCAG AA × Fail

Any Text WCAG AA × Fail

Large Text (above 18pt) WCAG AAA × Fail

Any Text WCAG AAA × Fail

Black Background



This preview shows how the Hex color CEB8A9 looks on a black background.

Color Contrast Check

Large Text (above 18pt) WCAG AA ✓ Pass

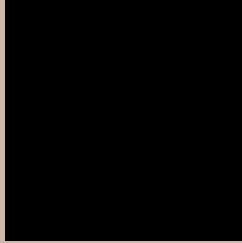
Any Text WCAG AA ✓ Pass

Large Text (above 18pt) WCAG AAA ✓ Pass

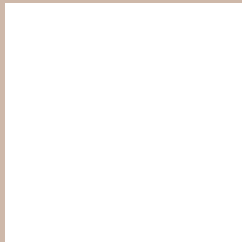
Any Text WCAG AAA ✓ Pass

If you want to check with other color combinations, try the [Color Contrast Checker](#).

Hex CEB8A9 Background



This preview shows how black text looks on a background with the Hex color CEB8A9.



This preview shows how white text looks on a background with the Hex color CEB8A9.

Color Blindness Simulation

Color vision deficiency is a very complex topic, and I could not describe the different causes any better than Wikipedia does, so if you want to learn more, you should check out their [article about color blindness](#).

Dichromacy





Tritanopia
D1B4C2

Trichromacy



Original Color
CEB8A9

Protanomaly
C8BAAA

Deuteranomaly
D2B6AA

Tritanomaly
D0B5B9

Monochromacy



Original Color
CEB8A9

Achromatopsia
BDBDBD

Achromatomaly
C3BBB6

CSS Examples

Text

The CSS property to change the color of the text to Hex CEB8A9 is called "color". The color property can be set on classes, ids or directly on the HTML element.

This example shows how text in the color #CEB8A9 looks like.

```
.text, #text, p{  
    color:#CEB8A9  
}
```

If you want to add a text shadow in that color use the text-shadow property, you can generate a text shadow directly with our [CSS Text Shadow Generator](#).

Here you see how black text with a 4 pixel #CEB8A9 colored shadow looks like.

```
.shadow{ text-shadow: 4px 4px 2px #CEB8A9  
}
```

Border

The CSS property to change the border of an element to Hex CEB8A9 is called "border". The border property can be set on classes, ids or directly on the HTML element.

This example shows the color as border, it can be applied via the CSS property "border" or "border-color".

```
.border, #border, table{ border:4px solid  
#CEB8A9 }
```

If only the border color should be changed use the property `border-color`.

```
.border{ border-color:#CEB8A9 }
```

If you want to add a box shadow in that color use:

Here you see how a box with a 4 pixel #CEB8A9 colored shadow looks like.

```
.boxshadow{ -moz-box-shadow:4px 4px 4px  
4px #CEB8A9; -webkit-box-shadow:4px 4px  
4px 4px #CEB8A9; box-shadow:4px 4px 4px  
4px #CEB8A9 }
```

Background

The CSS property to change the background color of an element to Hex CEB8A9 is called "background". The background property can be set on classes, ids or directly on the HTML element.

```
.background, #background, body{  
background:#CEB8A9 }
```

If only the background color should be changed can be used:

```
.background{ background-color:#CEB8A9 }
```

This example shows the color as background, it is applied via the CSS property "background".

To optimize and compress your CSS code, you can use our [online CSS compressor and optimizer](#) based on csstidy. If you want to create a linear or radial gradient as background or border, check our [CSS Gradient Generator](#).

Hey! You found this booklet interesting? Support Converting Colors with the new Membership Option!

The pro membership hides all ads, plus gives you double the colors in the color bucket, and more awesome pro features!

[Learn more, Memberships starting at \\$2.50/m!](#)

**Follow me
on Twitter!**

@ConvertingColor