

Converting Colors

Hex(CEB8C1)

Have a look what the booklet for
Hex(CEB8C1) contains.

Hex(CEB8C1)	3
<i>Conversions</i>	4
<i>Details</i>	6
<i>Harmonies</i>	11
<i>Previews</i>	23
<i>Color Blindness Simulation</i>	26
<i>CSS Examples</i>	29

Color

Hex(CEB8C1)

Conversions

Conversions Part 1

Format	Color
Hex	CEB8C1
RGB	206, 184, 193
RGB Percent	81%, 72%, 76%
CMY	0.1922, 0.2784, 0.2431
CMYK	0.00, 0.11, 0.06, 0.19
HSL	335°, 18%, 76%
HSV	335°, 11%, 81%
XYZ	52.2197, 51.2530, 57.5926
YIQ	191.6040, 10.2230, 7.4630

Conversions

Conversions Part 2

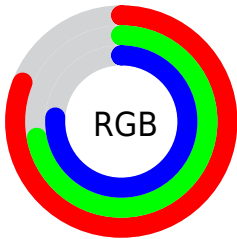
Format	Color
R _Y B	206, 184, 193
Decimal	13547713
CIE Lab	76.83, 9.38, -1.69
CIE LCh	77, 9.527, 349.780
Yxy	51.2530, 0.3242, 0.3182
Android (android.graphics.Color)	4291737793 (0xFFCEB8C1)
YUV	191.6040, 0.6882, 12.6253
Hunter-Lab	71.5912, 4.9159, 2.4171

Details

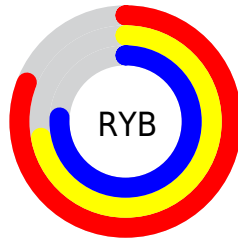
The Hex color **CEB8C1** is a light color, and the websafe version is hex **CCCCCC**. A complement of this color would be **B8CEC5**, and the grayscale version is **C0C0C0**.

A 20% lighter version of the original color is **FFF0F9**, and **98838C** is the 20% darker color. If you saturate the color by 10%, you get **CEA3B5**, and if you desaturate by 10%, it is **CECDCE**.

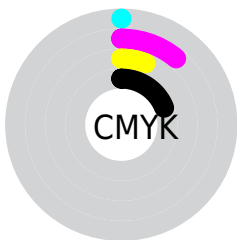
Distribution



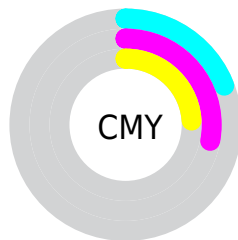
- Red (81%)
- Green (72%)
- Blue (76%)



- Red (81%)
- Yellow (72%)
- Blue (76%)



- Cyan (0%)
- Magenta (11%)
- Yellow (6%)
- Black (19%)



- Cyan (19%)
- Magenta (28%)
- Yellow (24%)

Brightness & Saturation Gradients

These gradients show how the Hex color CEB8C1 changes by changing the brightness by 10 percent. The first figure shows a shift by +10% for each color and the second figure -10%.

Similar to the brightness gradients but the following saturation gradients show a change of the Hex color CEB8C1 by changing the saturation by 10% instead.

 CEB8C1

 CEB8C1

FFFFFF

 B29DA6

 FFF0F9

 98838C

 7E6A72

 65525A

 4D3B42

 36252C

 201018

 000000

 CEB8C1

 CEB8C1

 CEA3B5

 CECDCD

 CE8FA9

 CEE1D9

 CE7A9C

 CEF6E6

 CE6690

 CEFFF2

 CE5184

 CEFFFE

 CE3C78

 CEFFFF

 CE286C

 CE1360

 CE0054

Harmonies

Analogous

The Analogous color harmony consists of three colors that are next to each other on the color wheel.



C6BAC9



CEB8C1



D1B8B8

Triad

The Triadic color harmony groups three colors that are evenly spaced from another and form a triangle on the color wheel.



CEB8C1



BFBFAD



AAC2CB

Complementary

The Complementary color scheme is a pair of colors which are on the opposite of each other on the color wheel.



CEB8C1



B8CEC5

Split Complementary

Split-complementary colors differ from the complementary color scheme. The scheme consists of three colors, the original color and two neighbors of the complement color.



A8C3C3



CEB8C1



B4C1B2

Square

The Square scheme is like the rectangle color scheme, but the four colors are evenly spaced on the color wheel.



CEB8C1



C8BCAC



ACC3BA



B1BFCF

Rectangle

The Rectangle color scheme consists of four colors that form a rectangle on the color wheel.



CEB8C1



D0B9B3



ACC3BA



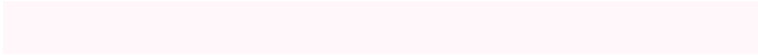
A9C2C9

Sweetspot

The Sweet Spot groups the original color and five complimentary colors.



CEB8C1



FFF7FA



C5B8CE



807A7C



000000



808080

Same Dimension

The Same Dimension uses a secret algorithm to generate beautiful new colors.



CEB8C1



FFDEEB



CEBAB8



665C60



A60044



260010

Inverse Universe

The Inverse Universe completely reimagines the original color for something new.



CEB8C1



FFDEEB



B8CCCE



665C60



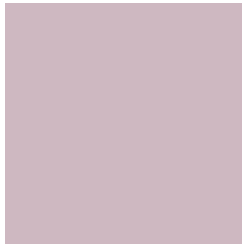
A60044



260010

Previews

White Background



This preview shows how the Hex color CEB8C1 looks on a white background.

Color Contrast Check

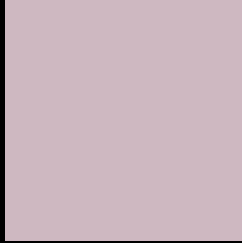
Large Text (above 18pt) WCAG AA × Fail

Any Text WCAG AA × Fail

Large Text (above 18pt) WCAG AAA × Fail

Any Text WCAG AAA × Fail

Black Background



This preview shows how the Hex color CEB8C1 looks on a black background.

Color Contrast Check

Large Text (above 18pt) WCAG AA ✓ Pass

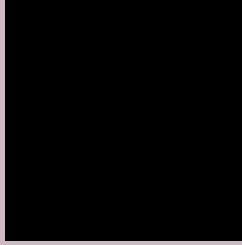
Any Text WCAG AA ✓ Pass

Large Text (above 18pt) WCAG AAA ✓ Pass

Any Text WCAG AAA ✓ Pass

If you want to check with other color combinations, try the [Color Contrast Checker](#).

Hex CEB8C1 Background



This preview shows how black text looks on a background with the Hex color CEB8C1.



This preview shows how white text looks on a background with the Hex color CEB8C1.

Color Blindness Simulation

Color vision deficiency is a very complex topic, and I could not describe the different causes any better than Wikipedia does, so if you want to learn more, you should check out their [article about color blindness](#).

Dichromacy





Tritanopia
CFB7C6

Trichromacy



Original Color
CEB8C1

Protanomaly
C4BBC3

Deuteranomaly
CEB8C1

Tritanomaly
CFB7C4

Monochromacy



Original Color
CEB8C1

Achromatopsia
C0C0C0

Achromatomaly
C5BDC0

CSS Examples

Text

The CSS property to change the color of the text to Hex CEB8C1 is called "color". The color property can be set on classes, ids or directly on the HTML element.

This example shows how text in the color #CEB8C1 looks like.

```
.text, #text, p{  
    color:#CEB8C1  
}
```

If you want to add a text shadow in that color use the text-shadow property, you can generate a text shadow directly with our [CSS Text Shadow Generator](#).

Here you see how black text with a 4 pixel #CEB8C1 colored shadow looks like.

```
.shadow{ text-shadow: 4px 4px 2px #CEB8C1  
}
```

Border

The CSS property to change the border of an element to Hex CEB8C1 is called "border". The border property can be set on classes, ids or directly on the HTML element.

This example shows the color as border, it can be applied via the CSS property "border" or "border-color".

```
.border, #border, table{ border:4px solid  
#CEB8C1 }
```

If only the border color should be changed use the property `border-color`.

```
.border{ border-color:#CEB8C1 }
```

If you want to add a box shadow in that color use:

Here you see how a box with a 4 pixel #CEB8C1 colored shadow looks like.

```
.boxshadow{ -moz-box-shadow:4px 4px 4px  
4px #CEB8C1; -webkit-box-shadow:4px 4px  
4px 4px #CEB8C1; box-shadow:4px 4px 4px  
4px #CEB8C1 }
```

Background

The CSS property to change the background color of an element to Hex CEB8C1 is called "background". The background property can be set on classes, ids or directly on the HTML element.

```
.background, #background, body{  
background:#CEB8C1 }
```

If only the background color should be changed can be used:

```
.background{ background-color:#CEB8C1 }
```

This example shows the color as background, it is applied via the CSS property "background".

To optimize and compress your CSS code, you can use our [online CSS compressor and optimizer](#) based on csstidy. If you want to create a linear or radial gradient as background or border, check our [CSS Gradient Generator](#).

Hey! You found this booklet interesting? Support Converting Colors with the new Membership Option!

The pro membership hides all ads, plus gives you double the colors in the color bucket, and more awesome pro features!

[Learn more, Memberships starting at \\$2.50/m!](#)

**Follow me
on Twitter!**

@ConvertingColor