

# Converting Colors

Hex(CEB9BE)

Have a look what the booklet for  
Hex(CEB9BE) contains.

<b>Hex(CEB9BE)</b> .....	3
<i><b>Conversions</b></i> .....	4
<i><b>Details</b></i> .....	6
<i><b>Harmonies</b></i> .....	11
<i><b>Previews</b></i> .....	23
<i><b>Color Blindness Simulation</b></i> .....	26
<i><b>CSS Examples</b></i> .....	29

# **Color**

**Hex(CEB9BE)**

# Conversions

## Conversions Part 1

Format	Color
Hex	CEB9BE
RGB	206, 185, 190
RGB Percent	81%, 73%, 75%
CMY	0.1922, 0.2745, 0.2549
CMYK	0.00, 0.10, 0.08, 0.19
HSL	346°, 18%, 77%
HSV	346°, 10%, 81%
XYZ	52.0968, 51.5374, 55.9171
YIQ	191.8490, 10.9110, 6.0070

# Conversions

## Conversions Part 2

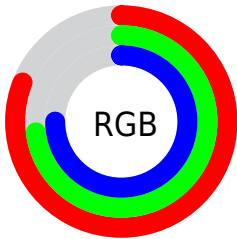
Format	Color
R <sub>Y</sub> B	206, 185, 190
Decimal	13547966
CIE Lab	77.00, 8.32, 0.19
CIE LCh	77, 8.318, 1.303
Yxy	51.5374, 0.3265, 0.3230
Android (android.graphics.Color)	4291738046 (0xFFCEB9BE)
YUV	191.8490, -0.9116, 12.4104
Hunter-Lab	71.7896, 3.9035, 4.0715

# Details

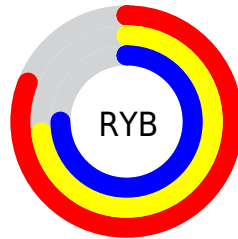
The Hex color **CEB9BE** is a light color, and the websafe version is hex **CCCCCC**. A complement of this color would be **B9CEC9**, and the grayscale version is **C0C0C0**.

A 20% lighter version of the original color is **FFF1F6**, and **988489** is the 20% darker color. If you saturate the color by 10%, you get **CEA4AE**, and if you desaturate by 10%, it is **CECECE**.

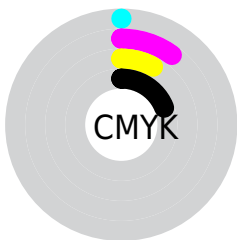
# Distribution



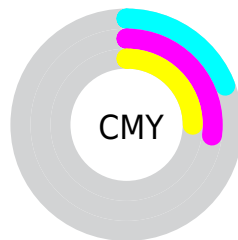
- Red (81%)
- Green (73%)
- Blue (75%)



- Red (81%)
- Yellow (73%)
- Blue (75%)



- Cyan (0%)
- Magenta (10%)
- Yellow (8%)
- Black (19%)



- Cyan (19%)
- Magenta (27%)
- Yellow (25%)

# Brightness & Saturation Gradients

These gradients show how the Hex color CEB9BE changes by changing the brightness by 10 percent. The first figure shows a shift by +10% for each color and the second figure -10%.

Similar to the brightness gradients but the following saturation gradients show a change of the Hex color CEB9BE by changing the saturation by 10% instead.



 CEB9BE

 CEB9BE

FFFFFF

 B29EA3

 FFF1F6

 988489

 7E6B6F

 655257

 4D3B40

 36262A

 201115

 000000

 CEB9BE

 CEB9BE

 CEA4AE

 CECECE

 CE909F

 CEE2DD

 CE7B8F

 CEF7ED

 CE677F

 CEFFFD

 CE5270

 CEFFFF

 CE3D60

 CE2950

 CE1440

 CE0031

# Harmonies

## Analogous

The Analogous color harmony consists of three colors that are next to each other on the color wheel.



C9BAC6



CEB9BE



CFB9B6

# Triad

The Triadic color harmony groups three colors that are evenly spaced from another and form a triangle on the color wheel.



CEB9BE



BCC0B1



AFC1CB

# Complementary

The Complementary color scheme is a pair of colors which are on the opposite of each other on the color wheel.



CEB9BE



B9CEC9

# Split Complementary

Split-complementary colors differ from the complementary color scheme. The scheme consists of three colors, the original color and two neighbors of the complement color.



ABC2C6



CEB9BE



B3C2B6

# Square

The Square scheme is like the rectangle color scheme, but the four colors are evenly spaced on the color wheel.



CEB9BE



C4BEAF



ADC3BE



B7BFCD

# Rectangle

The Rectangle color scheme consists of four colors that form a rectangle on the color wheel.



CEB9BE



CDBBB2



ADC3BE



ADC2CA

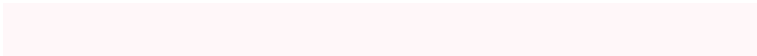


# Sweetspot

The Sweet Spot groups the original color and five complimentary colors.



CEB9BE



FFF7F9



C9B9CE



807A7C



000000



808080



# Same Dimension

The Same Dimension uses a secret algorithm to generate beautiful new colors.



CEB9BE



FFE0E8



CEBEB9



665C5E



A60027



260009



# Inverse Universe

The Inverse Universe completely reimagines the original color for something new.



CEB9BE



FFE0E8



B9C9CE



665C5E



A60027

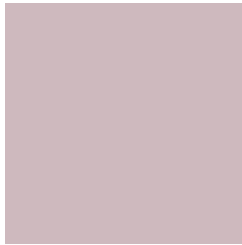


260009



# Previews

## White Background



This preview shows how the Hex color CEB9BE looks on a white background.

## Color Contrast Check

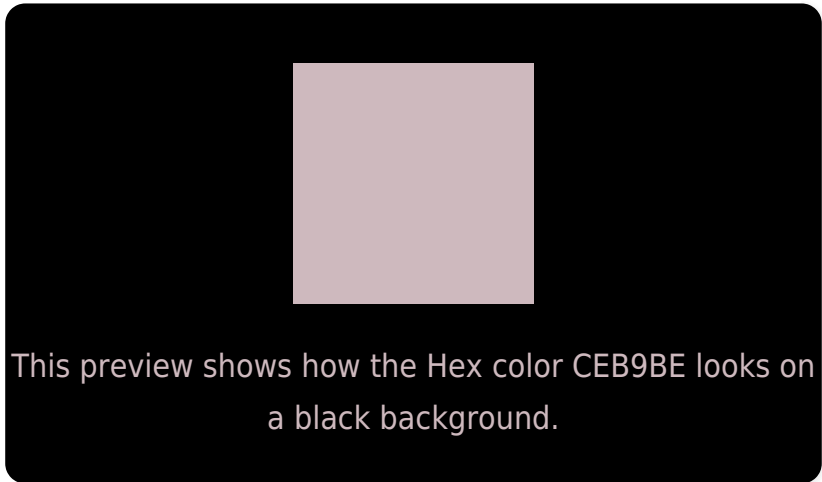
Large Text (above 18pt) WCAG AA × Fail

Any Text WCAG AA × Fail

Large Text (above 18pt) WCAG AAA × Fail

Any Text WCAG AAA × Fail

# Black Background



## Color Contrast Check

Large Text (above 18pt) WCAG AA ✓ Pass

Any Text WCAG AA ✓ Pass

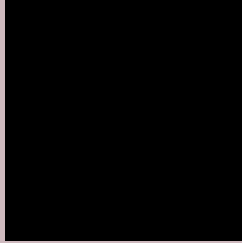
Large Text (above 18pt) WCAG AAA ✓ Pass

Any Text WCAG AAA ✓ Pass

If you want to check with other color combinations, try the [Color Contrast Checker](#).



## Hex CEB9BE Background



This preview shows how black text looks on a background with the Hex color CEB9BE.



This preview shows how white text looks on a background with the Hex color CEB9BE.

# Color Blindness Simulation

Color vision deficiency is a very complex topic, and I could not describe the different causes any better than Wikipedia does, so if you want to learn more, you should check out their [article about color blindness](#).

## Dichromacy





**Tritanopia**  
CFB8C6

# Trichromacy



**Original Color**  
CEB9BE

**Protanomaly**  
C6BCBF

**Deuteranomaly**  
CFB8BE

**Tritanomaly**  
CFB8C3

# Monochromacy



**Original Color**  
CEB9BE

**Achromatopsia**  
C0C0C0

**Achromatomaly**  
C5BDBF

# CSS Examples

## Text

The CSS property to change the color of the text to Hex CEB9BE is called "color". The color property can be set on classes, ids or directly on the HTML element.

This example shows how text in the color #CEB9BE looks like.

```
.text, #text, p{  
    color:#CEB9BE  
}
```

If you want to add a text shadow in that color use the text-shadow property, you can generate a text shadow directly with our [CSS Text Shadow Generator](#).

Here you see how black text with a 4 pixel #CEB9BE colored shadow looks like.

```
.shadow{ text-shadow: 4px 4px 2px #CEB9BE }  
}
```

## Border

The CSS property to change the border of an element to Hex CEB9BE is called "border". The border property can be set on classes, ids or directly on the HTML element.

This example shows the color as border, it can be applied via the CSS property "border" or "border-color".

```
.border, #border, table{ border:4px solid #CEB9BE }  
}
```

If only the border color should be changed use the property border-color.

```
.border{ border-color:#CEB9BE }
```

If you want to add a box shadow in that color use:

Here you see how a box with a 4 pixel #CEB9BE colored shadow looks like.

```
.boxshadow{ -moz-box-shadow:4px 4px 4px  
4px #CEB9BE; -webkit-box-shadow:4px 4px  
4px 4px #CEB9BE; box-shadow:4px 4px 4px  
4px #CEB9BE }
```

# Background

The CSS property to change the background color of an element to Hex CEB9BE is called "background". The background property can be set on classes, ids or directly on the HTML element.

```
.background, #background, body{  
background:#CEB9BE }
```

If only the background color should be changed can be used:

```
.background{ background-color:#CEB9BE }
```

This example shows the color as background, it is applied via the CSS property "background".

To optimize and compress your CSS code, you can use our [online CSS compressor and optimizer](#) based on csstidy. If you want to create a linear or radial gradient as background or border, check our [CSS Gradient Generator](#).



Hey! You found this booklet interesting? Support Converting Colors with the new Membership Option!

The pro membership hides all ads, plus gives you double the colors in the color bucket, and more awesome pro features!

**[Learn more, Memberships starting at \\$2.50/m!](#)**

**Follow me  
on Twitter!**

@ConvertingColor