

Converting Colors

Hex(CEBEC3)

Have a look what the booklet for
Hex(CEBEC3) contains.

Hex(CEBEC3)	3
<i>Conversions</i>	4
<i>Details</i>	6
<i>Harmonies</i>	11
<i>Previews</i>	23
<i>Color Blindness Simulation</i>	26
<i>CSS Examples</i>	29

Color

Hex(CEBEC3)

Conversions

Conversions Part 1

Format	Color
Hex	CEBEC3
RGB	206, 190, 195
RGB Percent	81%, 75%, 76%
CMY	0.1922, 0.2549, 0.2353
CMYK	0.00, 0.08, 0.05, 0.19
HSL	341°, 14%, 78%
HSV	341°, 8%, 81%
XYZ	53.7174, 53.8889, 59.2001
YIQ	195.3540, 7.9310, 4.9470

Conversions

Conversions Part 2

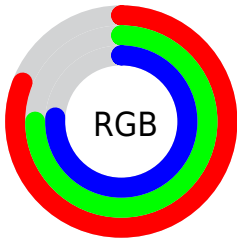
Format	Color
R _Y B	206, 190, 195
Decimal	13549251
CIE Lab	78.40, 6.51, -0.48
CIE LCh	78, 6.527, 355.753
Yxy	53.8889, 0.3220, 0.3231
Android (android.graphics.Color)	4291739331 (0xFFCEBEC3)
YUV	195.3540, -0.1745, 9.3365
Hunter-Lab	73.4090, 2.1524, 3.5724

Details

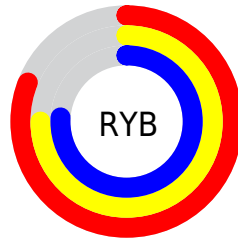
The Hex color **CEBEC3** is a light color, and the websafe version is hex **CCCCCC**. A complement of this color would be **BECEC9**, and the grayscale version is **C3C3C3**.

A 20% lighter version of the original color is **FFF6FC**, and **98898D** is the 20% darker color. If you saturate the color by 10%, you get **CEA9B5**, and if you desaturate by 10%, it is **CED3D1**.

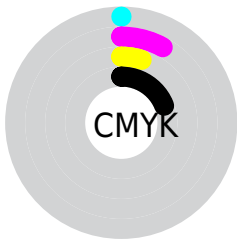
Distribution



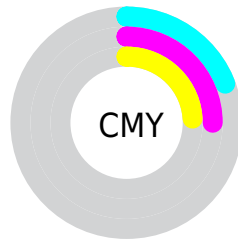
- Red (81%)
- Green (75%)
- Blue (76%)



- Red (81%)
- Yellow (75%)
- Blue (76%)



- Cyan (0%)
- Magenta (8%)
- Yellow (5%)
- Black (19%)



- Cyan (19%)
- Magenta (25%)
- Yellow (24%)

Brightness & Saturation Gradients

These gradients show how the Hex color CEBEC3 changes by changing the brightness by 10 percent. The first figure shows a shift by +10% for each color and the second figure -10%.

Similar to the brightness gradients but the following saturation gradients show a change of the Hex color CEBEC3 by changing the saturation by 10% instead.

 CEBEC3

 CEBEC3

FFFFFF

 B2A3A8

 FFF6FC

 98898D

 7E6F74

 65575B

 4D4044

 362A2E

 201519

 000000

 CEBEC3

 CEBEC3

■ CEA9B5

■ CED3D1

■ CE95A7

■ CEE7DF

■ CE8099

■ CEFCEB

■ CE6C8A

■ CEFFFC

■ CE577C

■ CEFFFF

■ CE426E

■ CE2E60

■ CE1952

■ CE0544

Harmonies

Analogous

The Analogous color harmony consists of three colors that are next to each other on the color wheel.



C9BFC9



CEBEC3



CFBEBD

Triad

The Triadic color harmony groups three colors that are evenly spaced from another and form a triangle on the color wheel.



CEBEC3



C1C3B7



B5C4CC

Complementary

The Complementary color scheme is a pair of colors which are on the opposite of each other on the color wheel.



CEBEC3



BECEC9

Split Complementary

Split-complementary colors differ from the complementary color scheme. The scheme consists of three colors, the original color and two neighbors of the complement color.



B3C5C7



CEBEC3



BAC5BB

Square

The Square scheme is like the rectangle color scheme, but the four colors are evenly spaced on the color wheel.



CEBEC3



C8C1B6



B5C6C1



BBC3CE

Rectangle

The Rectangle color scheme consists of four colors that form a rectangle on the color wheel.



CEBEC3



CEBFB9



B5C6C1



B4C5CA

Sweetspot

The Sweet Spot groups the original color and five complimentary colors.



CEBEC3



FFFAFB



C9BECE



807D7E



000000



808080

Same Dimension

The Same Dimension uses a secret algorithm to generate beautiful new colors.



CEBEC3



FFE8EF



CEC1BE



665C5F



A60034



26000C

Inverse Universe

The Inverse Universe completely reimagines the original color for something new.



CEBEC3



FFE8EF



BECBCE



665C5F



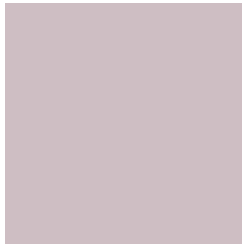
A60034



26000C

Previews

White Background



This preview shows how the Hex color CEBEC3 looks on a white background.

Color Contrast Check

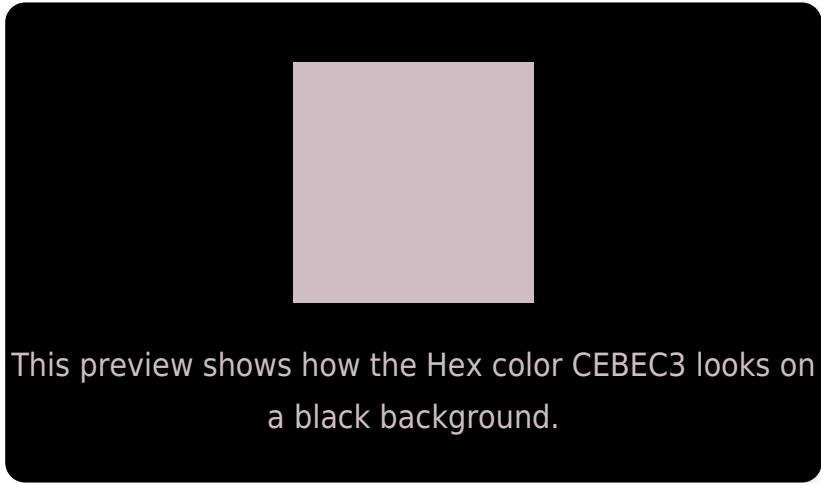
Large Text (above 18pt) WCAG AA × Fail

Any Text WCAG AA × Fail

Large Text (above 18pt) WCAG AAA × Fail

Any Text WCAG AAA × Fail

Black Background



Color Contrast Check

Large Text (above 18pt) WCAG AA ✓ Pass

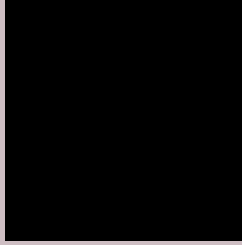
Any Text WCAG AA ✓ Pass

Large Text (above 18pt) WCAG AAA ✓ Pass

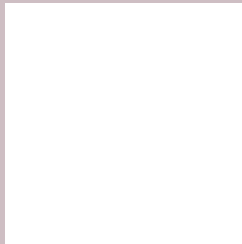
Any Text WCAG AAA ✓ Pass

If you want to check with other color combinations, try the [Color Contrast Checker](#).

Hex CEBEC3 Background



This preview shows how black text looks on a background with the Hex color CEBEC3.



This preview shows how white text looks on a background with the Hex color CEBEC3.

Color Blindness Simulation

Color vision deficiency is a very complex topic, and I could not describe the different causes any better than Wikipedia does, so if you want to learn more, you should check out their [article about color blindness](#).

Dichromacy



Original Color
CEBEC3

Protanopia
C5C1C5

Deuteranopia
D4BCC3

Trichromacy



Original Color
CEBEC3

Protanomaly
C8C0C4

Deuteranomaly
D2BDC3

Tritanomaly
CFBDC8

Monochromacy



Original Color
CEBEC3

Achromatopsia
C3C3C3

Achromatomaly
C7C1C3

CSS Examples

Text

The CSS property to change the color of the text to Hex CEBEC3 is called "color". The color property can be set on classes, ids or directly on the HTML element.

This example shows how text in the color #CEBEC3 looks like.

```
.text, #text, p{  
    color:#CEBEC3  
}
```

If you want to add a text shadow in that color use the text-shadow property, you can generate a text shadow directly with our [CSS Text Shadow Generator](#).

Here you see how black text with a 4 pixel #CEBEC3 colored shadow looks like.

```
.shadow{ text-shadow: 4px 4px 2px #CEBEC3
}
```

Border

The CSS property to change the border of an element to Hex CEBEC3 is called "border". The border property can be set on classes, ids or directly on the HTML element.

This example shows the color as border, it can be applied via the CSS property "border" or "border-color".

```
.border, #border, table{ border:4px solid
#CEBEC3 }
```

If only the border color should be changed use the property `border-color`.

```
.border{ border-color:#CEBEC3 }
```

If you want to add a box shadow in that color use:

Here you see how a box with a 4 pixel #CEBEC3 colored shadow looks like.

```
.boxshadow{ -moz-box-shadow:4px 4px 4px  
4px #CEBEC3; -webkit-box-shadow:4px 4px  
4px 4px #CEBEC3; box-shadow:4px 4px 4px  
4px #CEBEC3 }
```

Background

The CSS property to change the background color of an element to Hex CEBEC3 is called "background". The background property can be set on classes, ids or directly on the HTML element.

```
.background, #background, body{  
background:#CEBEC3 }
```

If only the background color should be changed can be used:

```
.background{ background-color:#CEBEC3 }
```

This example shows the color as background, it is applied via the CSS property "background".

To optimize and compress your CSS code, you can use our [online CSS compressor and optimizer](#) based on csstidy. If you want to create a linear or radial gradient as background or border, check our [CSS Gradient Generator](#).

Hey! You found this booklet interesting? Support Converting Colors with the new Membership Option!

The pro membership hides all ads, plus gives you double the colors in the color bucket, and more awesome pro features!

[Learn more, Memberships starting at \\$2.50/m!](#)

**Follow me
on Twitter!**

@ConvertingColor