

Converting Colors

Hex(CEC1C3)

Have a look what the booklet for
Hex(CEC1C3) contains.

Hex(CEC1C3)	3
<i>Conversions</i>	4
<i>Details</i>	6
<i>Harmonies</i>	11
<i>Previews</i>	23
<i>Color Blindness Simulation</i>	26
<i>CSS Examples</i>	29

Color

Hex(CEC1C3)

Conversions

Conversions Part 1

Format	Color
Hex	CEC1C3
RGB	206, 193, 195
RGB Percent	81%, 76%, 76%
CMY	0.1922, 0.2431, 0.2353
CMYK	0.00, 0.06, 0.05, 0.19
HSL	351°, 12%, 78%
HSV	351°, 6%, 81%
XYZ	54.3739, 55.2019, 59.4190
YIQ	197.1150, 7.1060, 3.3780

Conversions

Conversions Part 2

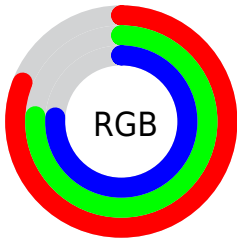
Format	Color
R _Y B	206, 193, 195
Decimal	13550019
CIE Lab	79.16, 4.91, 0.63
CIE LCh	79, 4.948, 7.280
Yxy	55.2019, 0.3217, 0.3266
Android (android.graphics.Color)	4291740099 (0xFFCEC1C3)
YUV	197.1150, -1.0427, 7.7921
Hunter-Lab	74.2980, 0.6112, 4.5921

Details

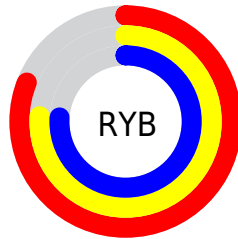
The Hex color **CEC1C3** is a light color, and the websafe version is hex **CCCCCC**. A complement of this color would be **C1CECC**, and the grayscale version is **C5C5C5**.

A 20% lighter version of the original color is **FFF9FC**, and **988C8D** is the 20% darker color. If you saturate the color by 10%, you get **CEACB2**, and if you desaturate by 10%, it is **CED6D4**.

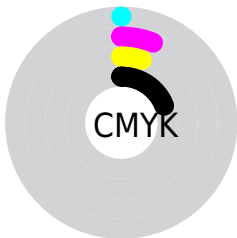
Distribution



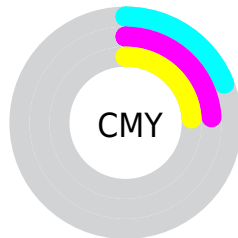
- Red (81%)
- Green (76%)
- Blue (76%)



- Red (81%)
- Yellow (76%)
- Blue (76%)



- Cyan (0%)
- Magenta (6%)
- Yellow (5%)
- Black (19%)



- Cyan (19%)
- Magenta (24%)
- Yellow (24%)

Brightness & Saturation Gradients

These gradients show how the Hex color CEC1C3 changes by changing the brightness by 10 percent. The first figure shows a shift by +10% for each color and the second figure -10%.

Similar to the brightness gradients but the following saturation gradients show a change of the Hex color CEC1C3 by changing the saturation by 10% instead.

■ CEC1C3

FFFFFF

■ FFF9FC

■ CEC1C3

■ B2A6A8

■ 988C8D

■ 7E7274

■ 655A5B

■ 4D4244

■ 362C2E

■ 211719

■ 030000

■ 000000

 CEC1C3

 CEC1C3

 CEACB2

 CED6D4

 CE98A0

 CEEAE6

 CE838F

 CEFFF7

 CE6F7D

 CEFFFF

 CE5A6C

 CE455A

 CE3149

 CE1C38

 CE0826

Harmonies

Analogous

The Analogous color harmony consists of three colors that are next to each other on the color wheel.



CBC1C8



CEC1C3



CEC1BF

Triad

The Triadic color harmony groups three colors that are evenly spaced from another and form a triangle on the color wheel.



CEC1C3



C1C5BD



BCC5CC

Complementary

The Complementary color scheme is a pair of colors which are on the opposite of each other on the color wheel.



CEC1C3



C1CECC

Split Complementary

Split-complementary colors differ from the complementary color scheme. The scheme consists of three colors, the original color and two neighbors of the complement color.



B9C7C9



CEC1C3



BDC7C0

Square

The Square scheme is like the rectangle color scheme, but the four colors are evenly spaced on the color wheel.



CEC1C3



C7C4BB



BAC7C5



C1C4CD

Rectangle

The Rectangle color scheme consists of four colors that form a rectangle on the color wheel.



CEC1C3



CDC2BC



BAC7C5



BBC6CC

Sweetspot

The Sweet Spot groups the original color and five complimentary colors.



CEC1C3



FFFAFB



CCC1CE



807D7D



000000



808080

Same Dimension

The Same Dimension uses a secret algorithm to generate beautiful new colors.



CEC1C3



FFEBEE



CEC5C1



665C5D



A60019



260006

Inverse Universe

The Inverse Universe completely reimagines the original color for something new.



CEC1C3



FFECEE



C1CACE



665C5D



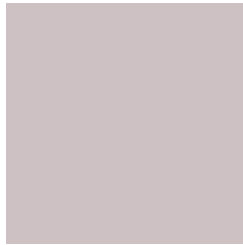
A60019



260006

Previews

White Background



This preview shows how the Hex color CEC1C3 looks on a white background.

Color Contrast Check

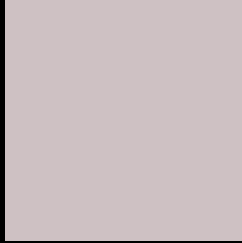
Large Text (above 18pt) WCAG AA × Fail

Any Text WCAG AA × Fail

Large Text (above 18pt) WCAG AAA × Fail

Any Text WCAG AAA × Fail

Black Background



This preview shows how the Hex color CEC1C3 looks on a black background.

Color Contrast Check

Large Text (above 18pt) WCAG AA ✓ Pass

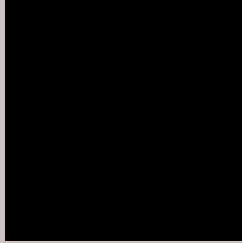
Any Text WCAG AA ✓ Pass

Large Text (above 18pt) WCAG AAA ✓ Pass

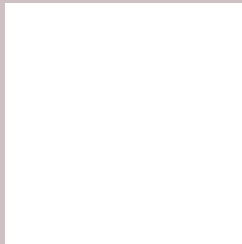
Any Text WCAG AAA ✓ Pass

If you want to check with other color combinations, try the [Color Contrast Checker](#).

Hex CEC1C3 Background



This preview shows how black text looks on a background with the Hex color CEC1C3.

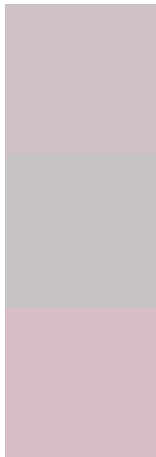


This preview shows how white text looks on a background with the Hex color CEC1C3.

Color Blindness Simulation

Color vision deficiency is a very complex topic, and I could not describe the different causes any better than Wikipedia does, so if you want to learn more, you should check out their [article about color blindness](#).

Dichromacy



Original Color
CEC1C3

Protanopia
C7C3C4

Deuteranopia
D7BEC4

Trichromacy



Original Color
CEC1C3

Protanomaly
CAC2C4

Deuteranomaly
D4BFC4

Tritanomaly
CFC0CA

Monochromacy



Original Color
CEC1C3

Achromatopsia
C5C5C5

Achromatomaly
C8C4C4

CSS Examples

Text

The CSS property to change the color of the text to Hex CEC1C3 is called "color". The color property can be set on classes, ids or directly on the HTML element.

This example shows how text in the color #CEC1C3 looks like.

```
.text, #text, p{  
    color:#CEC1C3  
}
```

If you want to add a text shadow in that color use the text-shadow property, you can generate a text shadow directly with our [CSS Text Shadow Generator](#).

Here you see how black text with a 4 pixel #CEC1C3 colored shadow looks like.

```
.shadow{ text-shadow: 4px 4px 2px #CEC1C3
}
```

Border

The CSS property to change the border of an element to Hex CEC1C3 is called "border". The border property can be set on classes, ids or directly on the HTML element.

This example shows the color as border, it can be applied via the CSS property "border" or "border-color".

```
.border, #border, table{ border:4px solid
#CEC1C3 }
```

If only the border color should be changed use the property `border-color`.

```
.border{ border-color:#CEC1C3 }
```

If you want to add a box shadow in that color use:

Here you see how a box with a 4 pixel #CEC1C3 colored shadow looks like.

```
.boxshadow{ -moz-box-shadow:4px 4px 4px  
4px #CEC1C3; -webkit-box-shadow:4px 4px  
4px 4px #CEC1C3; box-shadow:4px 4px 4px  
4px #CEC1C3 }
```

Background

The CSS property to change the background color of an element to Hex CEC1C3 is called "background". The background property can be set on classes, ids or directly on the HTML element.

```
.background, #background, body{  
background:#CEC1C3 }
```

If only the background color should be changed can be used:

```
.background{ background-color:#CEC1C3 }
```

This example shows the color as background, it is applied via the CSS property "background".

To optimize and compress your CSS code, you can use our [online CSS compressor and optimizer](#) based on csstidy. If you want to create a linear or radial gradient as background or border, check our [CSS Gradient Generator](#).

Hey! You found this booklet interesting? Support Converting Colors with the new Membership Option!

The pro membership hides all ads, plus gives you double the colors in the color bucket, and more awesome pro features!

[Learn more, Memberships starting at \\$2.50/m!](#)

**Follow me
on Twitter!**

@ConvertingColor