

Converting Colors

Hex(CF5B89)

Have a look what the booklet for
Hex(CF5B89) contains.

Hex(CF5B89)	3
<i>Conversions</i>	4
<i>Details</i>	6
<i>Harmonies</i>	11
<i>Previews</i>	23
<i>Color Blindness Simulation</i>	26
<i>CSS Examples</i>	29

Color

Hex(CF5B89)

Conversions

Conversions Part 1

Format	Color
Hex	CF5B89
RGB	207, 91, 137
RGB Percent	81%, 36%, 54%
CMY	0.1882, 0.6431, 0.4627
CMYK	0.00, 0.56, 0.34, 0.19
HSL	336°, 55%, 58%
HSV	336°, 56%, 81%
XYZ	33.9886, 22.5537, 26.2288
YIQ	130.9280, 54.3700, 38.8980

Conversions

Conversions Part 2

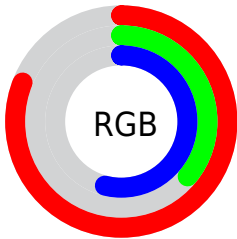
Format	Color
R_{YB}	207, 91, 137
Decimal	13589385
CIE _{Lab}	54.61, 50.54, -2.70
CIE _{LCh}	55, 50.617, 356.940
Yxy	22.5537, 0.4106, 0.2725
Android (android.graphics.Color)	4291779465 (0xFFCF5B89)
YUV	130.9280, 2.9935, 66.7151
Hunter-Lab	47.4907, 44.6415, 0.4981

Details

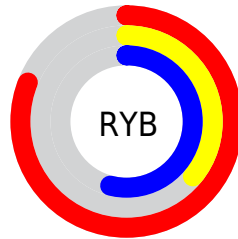
The Hex color **CF5B89** is a dark color, and the websafe version is hex **CC6699**. The color can be described as middle muted rose. A complement of this color would be **5BCFA1**, and the grayscale version is **838383**.

A 20% lighter version of the original color is **FF91BE**, and **952357** is the 20% darker color. If you saturate the color by 10%, you get **CF467D**, and if you desaturate by 10%, it is **CF7095**.

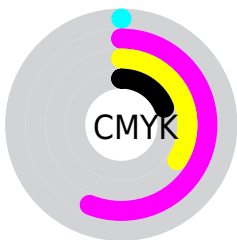
Distribution



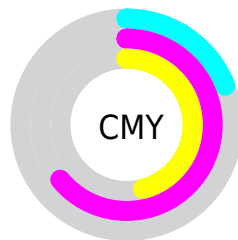
- Red (81%)
- Green (36%)
- Blue (54%)



- Red (81%)
- Yellow (36%)
- Blue (54%)



- Cyan (0%)
- Magenta (56%)
- Yellow (34%)
- Black (19%)



- Cyan (19%)
- Magenta (64%)
- Yellow (46%)

Brightness & Saturation Gradients

These gradients show how the Hex color CF5B89 changes by changing the brightness by 10 percent. The first figure shows a shift by +10% for each color and the second figure -10%.

Similar to the brightness gradients but the following saturation gradients show a change of the Hex color CF5B89 by changing the saturation by 10% instead.

 CF5B89

 CF5B89

FFFFFF

 B24070

 FF91BE

 952357

 FFADDA

 790040

 FFC9F7

 5D002A

 FFE6FF

 420016

 280001

 000000

 CF5B89

 CF5B89

 CF467D

 CF7095

 CF3270

 CF84A2

 CF1D64

 CF99AE

 CF0857

 CFAEBB

 CF0052

 CFC3C7

 CFD7D4

 CFECE0

 CFFFED

 CFFFF9

Harmonies

Analogous

The Analogous color harmony consists of three colors that are next to each other on the color wheel.



B467B3



CF5B89



D15F5E

Triad

The Triadic color harmony groups three colors that are evenly spaced from another and form a triangle on the color wheel.



CF5B89



738C2F



0093CB

Complementary

The Complementary color scheme is a pair of colors which are on the opposite of each other on the color wheel.



CF5B89



5BCFA1

Split Complementary

Split-complementary colors differ from the complementary color scheme. The scheme consists of three colors, the original color and two neighbors of the complement color.



0098A9



CF5B89



389451

Square

The Square scheme is like the rectangle color scheme, but the four colors are evenly spaced on the color wheel.



CF5B89



9E7F25



00987D



0089DA

Rectangle

The Rectangle color scheme consists of four colors that form a rectangle on the color wheel.



CF5B89



C76844



00987D



0095C2

Sweetspot

The Sweet Spot groups the original color and five complimentary colors.



CF5B89



FFD4E5



A15BCF



806670



000000



808080

Same Dimension

The Same Dimension uses a secret algorithm to generate beautiful new colors.



CF5B89



FF5498



CF675B



695E62



A80043



290010

Inverse Universe

The Inverse Universe completely reimagines the original color for something new.



CF5B89



FF5498



5BC3CF



695E62



A80043



290010

Previews

White Background



This preview shows how the Hex color CF5B89 looks on a white background.

Color Contrast Check

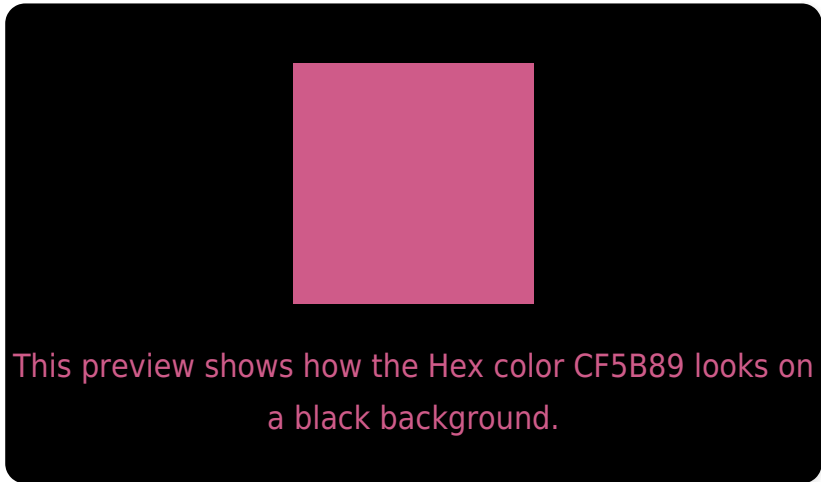
Large Text (above 18pt) WCAG AA ✓ Pass

Any Text WCAG AA × Fail

Large Text (above 18pt) WCAG AAA × Fail

Any Text WCAG AAA × Fail

Black Background



Color Contrast Check

Large Text (above 18pt) WCAG AA ✓ Pass

Any Text WCAG AA ✓ Pass

Large Text (above 18pt) WCAG AAA ✓ Pass

Any Text WCAG AAA × Fail

If you want to check with other color combinations, try the [Color Contrast Checker](#).

Hex CF5B89 Background



This preview shows how black text looks on a background with the Hex color CF5B89.



This preview shows how white text looks on a background with the Hex color CF5B89.

Color Blindness Simulation

Color vision deficiency is a very complex topic, and I could not describe the different causes any better than Wikipedia does, so if you want to learn more, you should check out their [article about color blindness](#).

Dichromacy

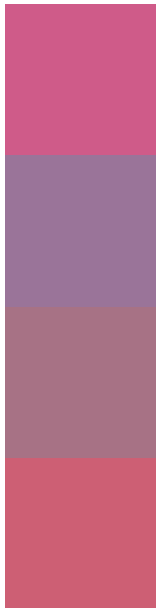


Original Color
CF5B89

Protanopia
7C82A2

Deuteranopia
907F83

Trichromacy



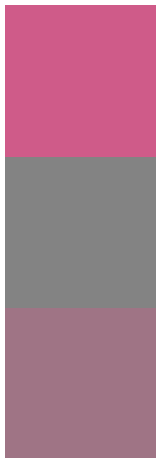
Original Color
CF5B89

Protanomaly
9A7499

Deuteranomaly
A77285

Tritanomaly
CD5F74

Monochromacy



Original Color
CF5B89

Achromatopsia
838383

Achromatomaly
9F7485

CSS Examples

Text

The CSS property to change the color of the text to Hex CF5B89 is called "color". The color property can be set on classes, ids or directly on the HTML element.

This example shows how text in the color #CF5B89 looks like.

```
.text, #text, p{  
    color:#CF5B89  
}
```

If you want to add a text shadow in that color use the text-shadow property, you can generate a text shadow directly with our [CSS Text Shadow Generator](#).

Here you see how black text with a 4 pixel #CF5B89 colored shadow looks like.

```
.shadow{ text-shadow: 4px 4px 2px #CF5B89
}
```

Border

The CSS property to change the border of an element to Hex CF5B89 is called "border". The border property can be set on classes, ids or directly on the HTML element.

This example shows the color as border, it can be applied via the CSS property "border" or "border-color".

```
.border, #border, table{ border:4px solid
#CF5B89 }
```

If only the border color should be changed use the property `border-color`.

```
.border{ border-color:#CF5B89 }
```

If you want to add a box shadow in that color use:

Here you see how a box with a 4 pixel #CF5B89 colored shadow looks like.

```
.boxshadow{ -moz-box-shadow:4px 4px 4px  
4px #CF5B89; -webkit-box-shadow:4px 4px  
4px 4px #CF5B89; box-shadow:4px 4px 4px  
4px #CF5B89 }
```

Background

The CSS property to change the background color of an element to Hex CF5B89 is called "background". The background property can be set on classes, ids or directly on the HTML element.

```
.background, #background, body{  
background:#CF5B89 }
```

If only the background color should be changed can be used:

```
.background{ background-color:#CF5B89 }
```

This example shows the color as background, it is applied via the CSS property "background".

To optimize and compress your CSS code, you can use our [online CSS compressor and optimizer](#) based on csstidy. If you want to create a linear or radial gradient as background or border, check our [CSS Gradient Generator](#).

Hey! You found this booklet interesting? Support Converting Colors with the new Membership Option!

The pro membership hides all ads, plus gives you double the colors in the color bucket, and more awesome pro features!

[Learn more, Memberships starting at \\$2.50/m!](#)

**Follow me
on Twitter!**

@ConvertingColor