

Converting Colors

Hex(CF5C8E)

Have a look what the booklet for
Hex(CF5C8E) contains.

Hex(CF5C8E)	3
<i>Conversions</i>	4
<i>Details</i>	6
<i>Harmonies</i>	11
<i>Previews</i>	23
<i>Color Blindness Simulation</i>	26
<i>CSS Examples</i>	29

Color

Hex(CF5C8E)

Conversions

Conversions Part 1

Format	Color
Hex	CF5C8E
RGB	207, 92, 142
RGB Percent	81%, 36%, 56%
CMY	0.1882, 0.6392, 0.4431
CMYK	0.00, 0.56, 0.31, 0.19
HSL	334°, 55%, 59%
HSV	334°, 56%, 81%
XYZ	34.4418, 22.8727, 28.1908
YIQ	132.0850, 52.4900, 39.9300

Conversions

Conversions Part 2

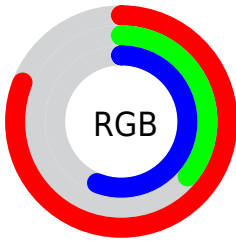
Format	Color
R _Y B	207, 92, 142
Decimal	13589646
CIE Lab	54.94, 50.69, -5.16
CIE LCh	55, 50.949, 354.188
Yxy	22.8727, 0.4028, 0.2675
Android (android.graphics.Color)	4291779726 (0xFFCF5C8E)
YUV	132.0850, 4.8881, 65.7005
Hunter-Lab	47.8254, 44.8535, -1.4708

Details

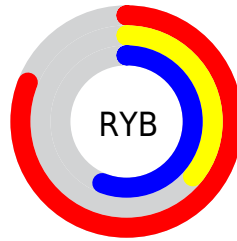
The Hex color **CF5C8E** is a dark color, and the websafe version is hex **CC6699**. The color can be described as middle muted rose. A complement of this color would be **5CCF9D**, and the grayscale version is **848484**.

A 20% lighter version of the original color is **FF92C4**, and **95245C** is the 20% darker color. If you saturate the color by 10%, you get **CF4782**, and if you desaturate by 10%, it is **CF719A**.

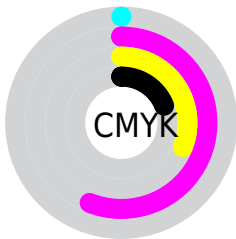
Distribution



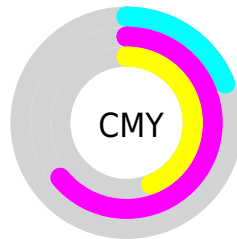
- Red (81%)
- Green (36%)
- Blue (56%)



- Red (81%)
- Yellow (36%)
- Blue (56%)



- Cyan (0%)
- Magenta (56%)
- Yellow (31%)
- Black (19%)



- Cyan (19%)
- Magenta (64%)
- Yellow (44%)

Brightness & Saturation Gradients

These gradients show how the Hex color CF5C8E changes by changing the brightness by 10 percent. The first figure shows a shift by +10% for each color and the second figure -10%.

Similar to the brightness gradients but the following saturation gradients show a change of the Hex color CF5C8E by changing the saturation by 10% instead.

 CF5C8E

 CF5C8E

FFFFFF

 B24174

 FF92C4

 95245C

 FFAEE0

 790044

 FFCAFC

 5E002E

 FFE7FF

 43001A

 2A0001

 000000

 CF5C8E

 CF5C8E

 CF4782

 CF719A

 CF3377

 CF85A5

 CF1E6B

 CF9AB1

 CF095F

 CFAFB D

 CF005A

 CFC3C9

 CFD8D4

 CFEDE0

 CFFFEC

 CFFFF7

Harmonies

Analogous

The Analogous color harmony consists of three colors that are next to each other on the color wheel.



B169B8



CF5C8E



D35E62

Triad

The Triadic color harmony groups three colors that are evenly spaced from another and form a triangle on the color wheel.



CF5C8E



788C2D



0095CA

Complementary

The Complementary color scheme is a pair of colors which are on the opposite of each other on the color wheel.



CF5C8E



5CCF9D

Split Complementary

Split-complementary colors differ from the complementary color scheme. The scheme consists of three colors, the original color and two neighbors of the complement color.



0099A6



CF5C8E



3F944D

Square

The Square scheme is like the rectangle color scheme, but the four colors are evenly spaced on the color wheel.



CF5C8E



A37E25



009879



008BDB

Rectangle

The Rectangle color scheme consists of four colors that form a rectangle on the color wheel.



CF5C8E



CA6848



009879



0097C0

Sweetspot

The Sweet Spot groups the original color and five complimentary colors.



CF5C8E



FFD4E6



9B5CCF



806671



000000



808080

Same Dimension

The Same Dimension uses a secret algorithm to generate beautiful new colors.



CF5C8E



FF549E



CF625C



695E63



A80049



290012

Inverse Universe

The Inverse Universe completely reimagines the original color for something new.



CF5C8E



FF549E



5CC9CF



695E63



A80049



290012

Previews

White Background



This preview shows how the Hex color CF5C8E looks on a white background.

Color Contrast Check

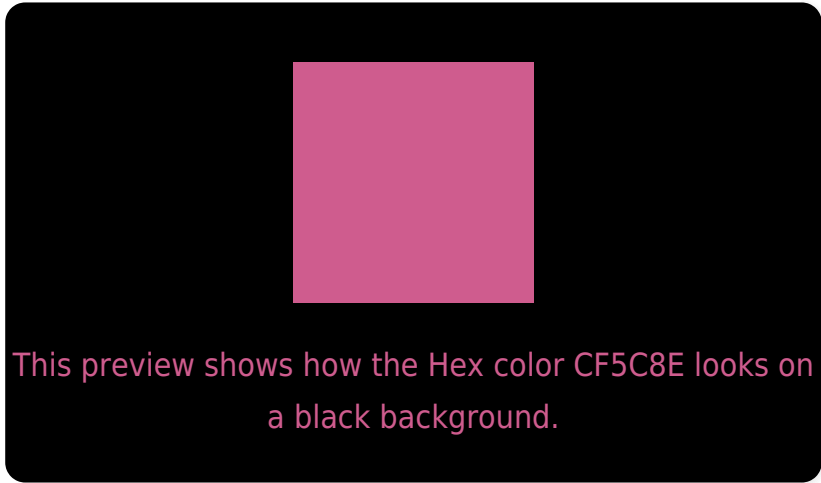
Large Text (above 18pt) WCAG AA ✓ Pass

Any Text WCAG AA × Fail

Large Text (above 18pt) WCAG AAA × Fail

Any Text WCAG AAA × Fail

Black Background



Color Contrast Check

Large Text (above 18pt) WCAG AA ✓ Pass

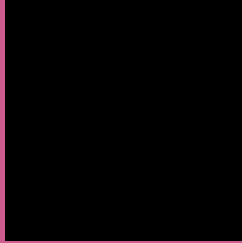
Any Text WCAG AA ✓ Pass

Large Text (above 18pt) WCAG AAA ✓ Pass

Any Text WCAG AAA × Fail

If you want to check with other color combinations, try the [Color Contrast Checker](#).

Hex CF5C8E Background



This preview shows how black text looks on a background with the Hex color CF5C8E.



This preview shows how white text looks on a background with the Hex color CF5C8E.

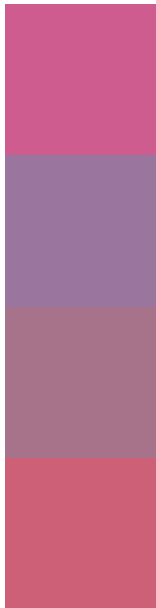
Color Blindness Simulation

Color vision deficiency is a very complex topic, and I could not describe the different causes any better than Wikipedia does, so if you want to learn more, you should check out their [article about color blindness](#).

Dichromacy



Trichromacy



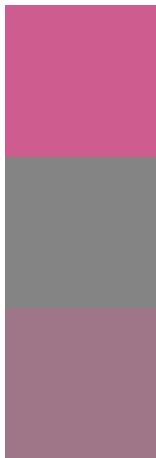
Original Color
CF5C8E

Protanomaly
9A759E

Deuteranomaly
A6738A

Tritanomaly
CD6077

Monochromacy



Original Color
CF5C8E

Achromatopsia
848484

Achromatomaly
9F7588

CSS Examples

Text

The CSS property to change the color of the text to Hex CF5C8E is called "color". The color property can be set on classes, ids or directly on the HTML element.

This example shows how text in the color #CF5C8E looks like.

```
.text, #text, p{  
    color:#CF5C8E  
}
```

If you want to add a text shadow in that color use the text-shadow property, you can generate a text shadow directly with our [CSS Text Shadow Generator](#).

Here you see how black text with a 4 pixel #CF5C8E colored shadow looks like.

```
.shadow{ text-shadow: 4px 4px 2px #CF5C8E
}
```

Border

The CSS property to change the border of an element to Hex CF5C8E is called "border". The border property can be set on classes, ids or directly on the HTML element.

This example shows the color as border, it can be applied via the CSS property "border" or "border-color".

```
.border, #border, table{ border:4px solid
#CF5C8E }
```

If only the border color should be changed use the property `border-color`.

```
.border{ border-color:#CF5C8E }
```

If you want to add a box shadow in that color use:

Here you see how a box with a 4 pixel #CF5C8E colored shadow looks like.

```
.boxshadow{ -moz-box-shadow:4px 4px 4px  
4px #CF5C8E; -webkit-box-shadow:4px 4px  
4px 4px #CF5C8E; box-shadow:4px 4px 4px  
4px #CF5C8E }
```

Background

The CSS property to change the background color of an element to Hex CF5C8E is called "background". The background property can be set on classes, ids or directly on the HTML element.

```
.background, #background, body{  
background:#CF5C8E }
```

If only the background color should be changed can be used:

```
.background{ background-color:#CF5C8E }
```

This example shows the color as background, it is applied via the CSS property "background".

To optimize and compress your CSS code, you can use our [online CSS compressor and optimizer](#) based on csstidy. If you want to create a linear or radial gradient as background or border, check our [CSS Gradient Generator](#).

Hey! You found this booklet interesting? Support Converting Colors with the new Membership Option!

The pro membership hides all ads, plus gives you double the colors in the color bucket, and more awesome pro features!

[Learn more, Memberships starting at \\$2.50/m!](#)

**Follow me
on Twitter!**

@ConvertingColor