

Converting Colors

Hex(CF847B)

Have a look what the booklet for
Hex(CF847B) contains.

Hex(CF847B)	3
<i>Conversions</i>	4
<i>Details</i>	6
<i>Harmonies</i>	11
<i>Previews</i>	23
<i>Color Blindness Simulation</i>	26
<i>CSS Examples</i>	29

Color

Hex(CF847B)

Conversions

Conversions Part 1

Format	Color
Hex	CF847B
RGB	207, 132, 123
RGB Percent	81%, 52%, 48%
CMY	0.1882, 0.4824, 0.5176
CMYK	0.00, 0.36, 0.41, 0.19
HSL	6°, 47%, 65%
HSV	6°, 41%, 81%
XYZ	37.5585, 31.1980, 22.7812
YIQ	153.3990, 47.5890, 13.1010

Conversions

Conversions Part 2

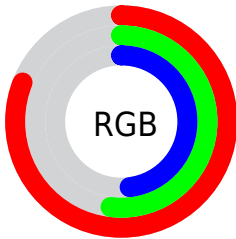
Format	Color
RYB	207, 133, 123
Decimal	13599867
CIELab	62.67, 27.80, 16.91
CIELCh	63, 32.538, 31.319
Yxy	31.1980, 0.4103, 0.3408
Android (android.graphics.Color)	4291789947 (0xFFCF847B)
YUV	153.3990, -14.9867, 47.0081
Hunter-Lab	55.8552, 22.2818, 14.9165

Details

The Hex color **CF847B** is a light color, and the websafe version is hex **CC9999**. A complement of this color would be **7BC6CF**, and the grayscale version is **9A9A9A**.

A 20% lighter version of the original color is **FFBAAF**, and **96514A** is the 20% darker color. If you saturate the color by 10%, you get **CF7266**, and if you desaturate by 10%, it is **CF9690**.

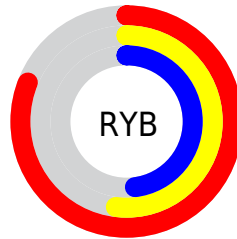
Distribution



Red (81%)

Green (52%)

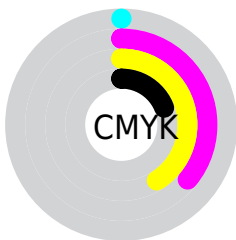
Blue (48%)



Red (81%)

Yellow (52%)

Blue (48%)

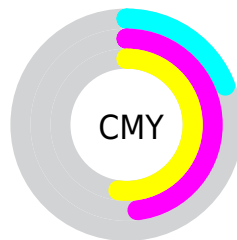


Cyan (0%)

Magenta (36%)

Yellow (41%)

Black (19%)



Cyan (19%)

Magenta (48%)

Yellow (52%)

Brightness & Saturation Gradients

These gradients show how the Hex color CF847B changes by changing the brightness by 10 percent. The first figure shows a shift by +10% for each color and the second figure -10%.

Similar to the brightness gradients but the following saturation gradients show a change of the Hex color CF847B by changing the saturation by 10% instead.

 CF847B

 CF847B

FFFFFF

 B26A62

 FFBAAF

 96514A

 FFD6CB

 7B3934

 FFF2E7

 60221E

 460A07

 2D0000

 000000

 CF847B

 CF847B

 CF7266

 CF9690

 CF5F52

 CFA9A4

 CF4D3D

 CFBBBB9

 CF3A28

 CFCECE

 CF2814

 CFE0E3

 CF1600

 CFF3F7

 CFFFFFF

Harmonies

Analogous

The Analogous color harmony consists of three colors that are next to each other on the color wheel.



CE8197



CF847B



C28C66

Triad

The Triadic color harmony groups three colors that are evenly spaced from another and form a triangle on the color wheel.



CF847B



69A57B



719AD1

Complementary

The Complementary color scheme is a pair of colors which are on the opposite of each other on the color wheel.



CF847B



7BC6CF

Split Complementary

Split-complementary colors differ from the complementary color scheme. The scheme consists of three colors, the original color and two neighbors of the complement color.



42A2CA



CF847B



44A798

Square

The Square scheme is like the rectangle color scheme, but the four colors are evenly spaced on the color wheel.



CF847B



8B9F65



2AA6B5



9D90C9

Rectangle

The Rectangle color scheme consists of four colors that form a rectangle on the color wheel.



CF847B



B3935E



2AA6B5



619DD0

Sweetspot

The Sweet Spot groups the original color and five complimentary colors.



CF847B



FFE4E0



CF7BC7



80706E



000000



808080

Same Dimension

The Same Dimension uses a secret algorithm to generate beautiful new colors.



CF847B



FF8F82



CFAD7B



695F5E



A81200



290400

Inverse Universe

The Inverse Universe completely reimagines the original color for something new.



7BC6CF



82F2FF



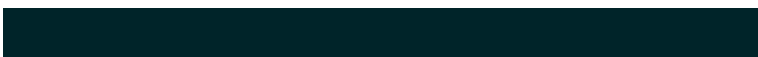
7B9DCF



5E6769



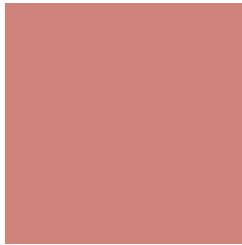
0096A8



002429

Previews

White Background



This preview shows how the Hex color CF847B looks on a white background.

Color Contrast Check

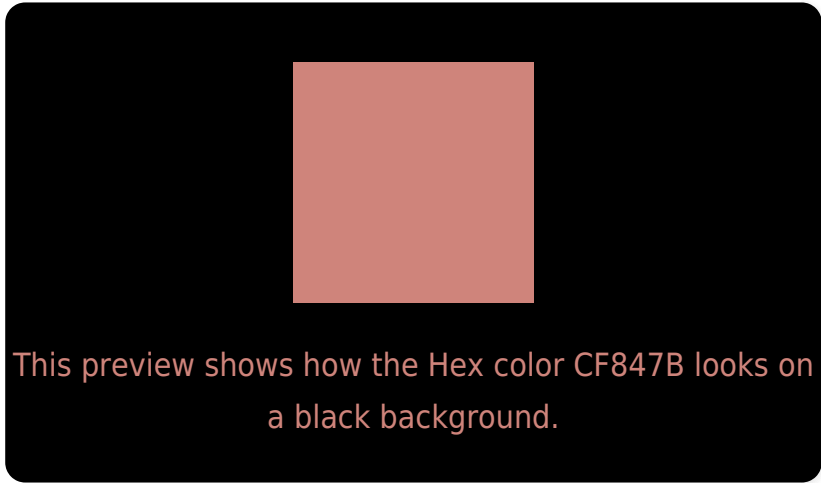
Large Text (above 18pt) WCAG AA × Fail

Any Text WCAG AA × Fail

Large Text (above 18pt) WCAG AAA × Fail

Any Text WCAG AAA × Fail

Black Background



Color Contrast Check

Large Text (above 18pt) WCAG AA ✓ Pass

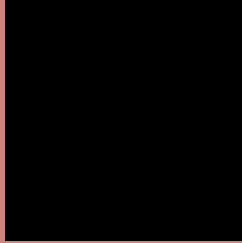
Any Text WCAG AA ✓ Pass

Large Text (above 18pt) WCAG AAA ✓ Pass

Any Text WCAG AAA ✓ Pass

If you want to check with other color combinations, try the [Color Contrast Checker](#).

Hex CF847B Background



This preview shows how black text looks on a background with the Hex color CF847B.



This preview shows how white text looks on a background with the Hex color CF847B.

Color Blindness Simulation

Color vision deficiency is a very complex topic, and I could not describe the different causes any better than Wikipedia does, so if you want to learn more, you should check out their [article about color blindness](#).

Dichromacy





Tritanopia
D0828B

Trichromacy



Original Color
CF847B

Protanomaly
B09181

Deuteranomaly
BC8D79

Tritanomaly
D08385

Monochromacy



Original Color
CF847B

Achromatopsia
999999

Achromatomaly
AD918E

CSS Examples

Text

The CSS property to change the color of the text to Hex CF847B is called "color". The color property can be set on classes, ids or directly on the HTML element.

This example shows how text in the color #CF847B looks like.

```
.text, #text, p{  
    color:#CF847B  
}
```

If you want to add a text shadow in that color use the text-shadow property, you can generate a text shadow directly with our [CSS Text Shadow Generator](#).

Here you see how black text with a 4 pixel #CF847B colored shadow looks like.

```
.shadow{ text-shadow: 4px 4px 2px #CF847B  
}
```

Border

The CSS property to change the border of an element to Hex CF847B is called "border". The border property can be set on classes, ids or directly on the HTML element.

This example shows the color as border, it can be applied via the CSS property "border" or "border-color".

```
.border, #border, table{ border:4px solid  
#CF847B }
```

If only the border color should be changed use the property `border-color`.

```
.border{ border-color:#CF847B }
```

If you want to add a box shadow in that color use:

Here you see how a box with a 4 pixel #CF847B colored shadow looks like.

```
.boxshadow{ -moz-box-shadow:4px 4px 4px  
4px #CF847B; -webkit-box-shadow:4px 4px  
4px 4px #CF847B; box-shadow:4px 4px 4px  
4px #CF847B }
```

Background

The CSS property to change the background color of an element to Hex CF847B is called "background". The background property can be set on classes, ids or directly on the HTML element.

```
.background, #background, body{  
background:#CF847B }
```

If only the background color should be changed can be used:

```
.background{ background-color:#CF847B }
```

This example shows the color as background, it is applied via the CSS property "background".

To optimize and compress your CSS code, you can use our [online CSS compressor and optimizer](#) based on csstidy. If you want to create a linear or radial gradient as background or border, check our [CSS Gradient Generator](#).

Hey! You found this booklet interesting? Support Converting Colors with the new Membership Option!

The pro membership hides all ads, plus gives you double the colors in the color bucket, and more awesome pro features!

[Learn more, Memberships starting at \\$2.50/m!](#)

**Follow me
on Twitter!**

@ConvertingColor