

Converting Colors

Hex(CF8888)

Have a look what the booklet for
Hex(CF8888) contains.

Hex(CF8888)	3
<i>Conversions</i>	4
<i>Details</i>	6
<i>Harmonies</i>	11
<i>Previews</i>	23
<i>Color Blindness Simulation</i>	26
<i>CSS Examples</i>	29

Color

Hex(CF8888)

Conversions

Conversions Part 1

Format	Color
Hex	CF8888
RGB	207, 136, 136
RGB Percent	81%, 53%, 53%
CMY	0.1882, 0.4667, 0.4667
CMYK	0.00, 0.34, 0.34, 0.19
HSL	0°, 43%, 67%
HSV	0°, 34%, 81%
XYZ	38.9802, 32.6513, 27.5404
YIQ	157.2290, 42.3160, 15.0520

Conversions

Conversions Part 2

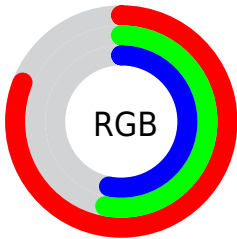
Format	Color
R _Y B	207, 136, 136
Decimal	13600904
CIE Lab	63.88, 27.18, 11.24
CIE LCh	64, 29.414, 22.459
Yxy	32.6513, 0.3931, 0.3292
Android (android.graphics.Color)	4291790984 (0xFFCF8888)
YUV	157.2290, -10.4659, 43.6492
Hunter-Lab	57.1413, 21.7705, 11.4229

Details

The Hex color **CF8888** is a light color, and the websafe version is hex **CC9999**. A complement of this color would be **88CFCF**, and the grayscale version is **9D9D9D**.

A 20% lighter version of the original color is **FFBEBD**, and **975556** is the 20% darker color. If you saturate the color by 10%, you get **CF7373**, and if you desaturate by 10%, it is **CF9D9D**.

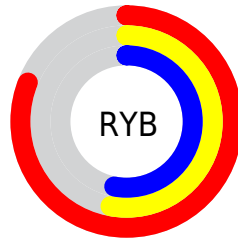
Distribution



Red (81%)

Green (53%)

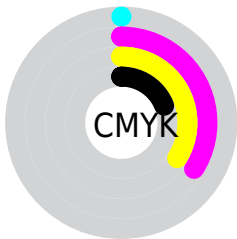
Blue (53%)



Red (81%)

Yellow (53%)

Blue (53%)

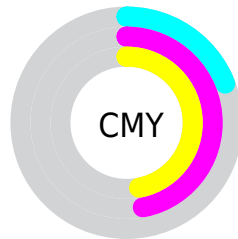


Cyan (0%)

Magenta (34%)

Yellow (34%)

Black (19%)



Cyan (19%)

Magenta (47%)

Yellow (47%)

Brightness & Saturation Gradients

These gradients show how the Hex color CF8888 changes by changing the brightness by 10 percent. The first figure shows a shift by +10% for each color and the second figure -10%.

Similar to the brightness gradients but the following saturation gradients show a change of the Hex color CF8888 by changing the saturation by 10% instead.

 CF8888

 CF8888

FFFFFF

 B36E6F

 FFBEBD

 975556

 FFDAD9

 7B3D3F

 FFF7F5

 612629

 470E15

 2F0000

 020000

 000000

 CF8888

 CF8888

 CF7373

 CF9D9D

 CF5F5F

 CFB1B1

 CF4A4A

 CFC6C6

 CF3535

 CFDBDB

 CF2121

 CFF0F0

 CF0C0C

 CFFFFFF

 CF0000

Harmonies

Analogous

The Analogous color harmony consists of three colors that are next to each other on the color wheel.



CA88A2



CF8888



C68E72

Triad

The Triadic color harmony groups three colors that are evenly spaced from another and form a triangle on the color wheel.



CF8888



7AA57A



6E9FCE

Complementary

The Complementary color scheme is a pair of colors which are on the opposite of each other on the color wheel.



CF8888



88CFCF

Split Complementary

Split-complementary colors differ from the complementary color scheme. The scheme consists of three colors, the original color and two neighbors of the complement color.



4CA6C4



CF8888



5CA993

Square

The Square scheme is like the rectangle color scheme, but the four colors are evenly spaced on the color wheel.



CF8888



999F6A



45A9AE



9596CB

Rectangle

The Rectangle color scheme consists of four colors that form a rectangle on the color wheel.



CF8888



BA9469



45A9AE



61A2CC

Sweetspot

The Sweet Spot groups the original color and five complimentary colors.



CF8888



FFE6E6



CF88CF



807070



000000



808080

Same Dimension

The Same Dimension uses a secret algorithm to generate beautiful new colors.



CF8888



FF9696



CFAC88



695E5E



A80000



290000

Inverse Universe

The Inverse Universe completely reimagines the original color for something new.



88CFCF



96FFFF



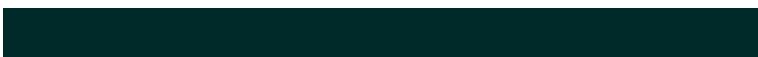
88ACCF



5E6969



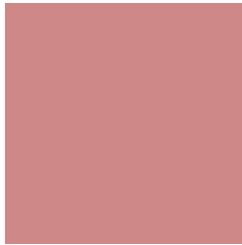
00A8A8



002929

Previews

White Background



This preview shows how the Hex color CF8888 looks on a white background.

Color Contrast Check

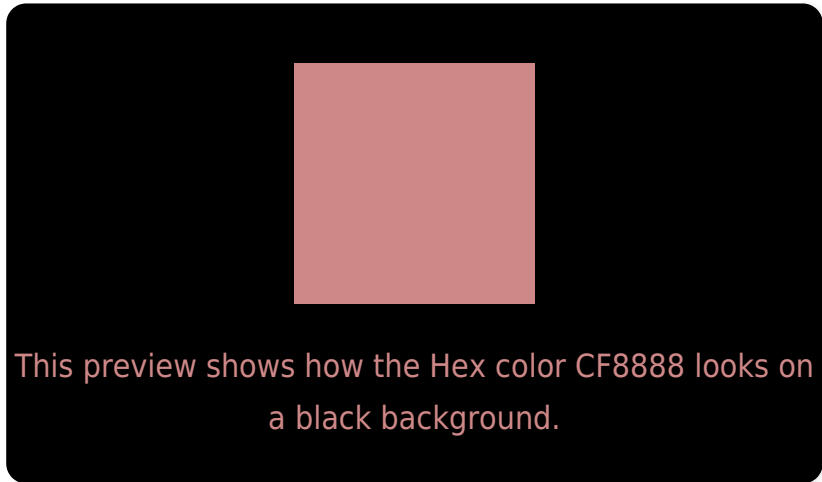
Large Text (above 18pt) WCAG AA × Fail

Any Text WCAG AA × Fail

Large Text (above 18pt) WCAG AAA × Fail

Any Text WCAG AAA × Fail

Black Background



Color Contrast Check

Large Text (above 18pt) WCAG AA ✓ Pass

Any Text WCAG AA ✓ Pass

Large Text (above 18pt) WCAG AAA ✓ Pass

Any Text WCAG AAA ✓ Pass

If you want to check with other color combinations, try the [Color Contrast Checker](#).

Hex CF8888 Background



This preview shows how black text looks on a background with the Hex color CF8888.




This preview shows how white text looks on a background with the Hex color CF8888.

Color Blindness Simulation

Color vision deficiency is a very complex topic, and I could not describe the different causes any better than Wikipedia does, so if you want to learn more, you should check out their [article about color blindness](#).

Dichromacy





Tritanopia
D08791

Trichromacy



Original Color
CF8888

Protanomaly
B1948E

Deuteranomaly
BD9087

Tritanomaly
D0878E

Monochromacy



Original Color
CF8888

Achromatopsia
9D9D9D

Achromatomaly
AF9595

CSS Examples

Text

The CSS property to change the color of the text to Hex CF8888 is called "color". The color property can be set on classes, ids or directly on the HTML element.

This example shows how text in the color #CF8888 looks like.

```
.text, #text, p{  
    color:#CF8888  
}
```

If you want to add a text shadow in that color use the text-shadow property, you can generate a text shadow directly with our [CSS Text Shadow Generator](#).

Here you see how black text with a 4 pixel #CF8888 colored shadow looks like.

```
.shadow{ text-shadow: 4px 4px 2px #CF8888  
}
```

Border

The CSS property to change the border of an element to Hex CF8888 is called "border". The border property can be set on classes, ids or directly on the HTML element.

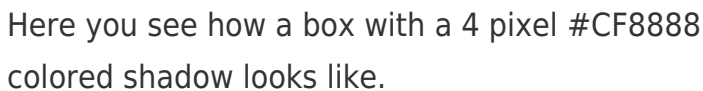
This example shows the color as border, it can be applied via the CSS property "border" or "border-color".

```
.border, #border, table{ border:4px solid  
#CF8888 }
```

If only the border color should be changed use the property `border-color`.

```
.border{ border-color:#CF8888 }
```

If you want to add a box shadow in that color use:

A rectangular box with a 4px red shadow. The box is white with a thin red border. The shadow is a darker red color, extending 4 pixels to the right and 4 pixels down from the bottom-right corner of the box. The text inside the box is black and reads: "Here you see how a box with a 4 pixel #CF8888 colored shadow looks like."

Here you see how a box with a 4 pixel #CF8888 colored shadow looks like.

```
.boxshadow{ -moz-box-shadow:4px 4px 4px  
4px #CF8888; -webkit-box-shadow:4px 4px  
4px 4px #CF8888; box-shadow:4px 4px 4px  
4px #CF8888 }
```

Background

The CSS property to change the background color of an element to Hex CF8888 is called "background". The background property can be set on classes, ids or directly on the HTML element.

```
.background, #background, body{  
background:#CF8888 }
```

If only the background color should be changed can be used:

```
.background{ background-color:#CF8888 }
```

This example shows the color as background, it is applied via the CSS property "background".

To optimize and compress your CSS code, you can use our [online CSS compressor and optimizer](#) based on csstidy. If you want to create a linear or radial gradient as background or border, check our [CSS Gradient Generator](#).

Hey! You found this booklet interesting? Support Converting Colors with the new Membership Option!

The pro membership hides all ads, plus gives you double the colors in the color bucket, and more awesome pro features!

[Learn more, Memberships starting at \\$2.50/m!](#)

**Follow me
on Twitter!**

@ConvertingColor