

Converting Colors

Hex(CF8F8A)

Have a look what the booklet for
Hex(CF8F8A) contains.

Hex(CF8F8A)	3
<i>Conversions</i>	4
<i>Details</i>	6
<i>Harmonies</i>	11
<i>Previews</i>	23
<i>Color Blindness Simulation</i>	26
<i>CSS Examples</i>	29

Color

Hex(CF8F8A)

Conversions

Conversions Part 1

Format	Color
Hex	CF8F8A
RGB	207, 143, 138
RGB Percent	81%, 56%, 54%
CMY	0.1882, 0.4392, 0.4588
CMYK	0.00, 0.31, 0.33, 0.19
HSL	4°, 42%, 68%
HSV	4°, 33%, 81%
XYZ	40.1420, 34.7453, 28.6356
YIQ	161.5660, 39.7490, 12.0130

Conversions

Conversions Part 2

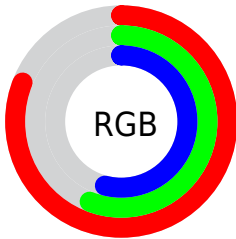
Format	Color
R _Y B	207, 143, 138
Decimal	13602698
CIE Lab	65.55, 23.63, 12.47
CIE LCh	66, 26.716, 27.813
Yxy	34.7453, 0.3878, 0.3356
Android (android.graphics.Color)	4291792778 (0xFFCF8F8A)
YUV	161.5660, -11.6180, 39.8456
Hunter-Lab	58.9451, 18.4057, 12.4585

Details

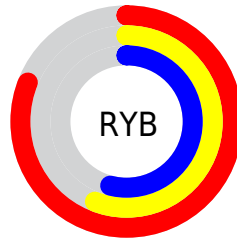
The Hex color **CF8F8A** is a light color, and the websafe version is hex **CC9999**. A complement of this color would be **8ACACF**, and the grayscale version is **A2A2A2**.

A 20% lighter version of the original color is **FFC5BF**, and **975C58** is the 20% darker color. If you saturate the color by 10%, you get **CF7C75**, and if you desaturate by 10%, it is **CFA29F**.

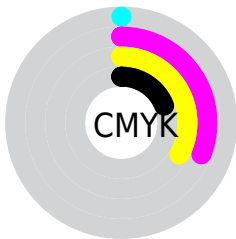
Distribution



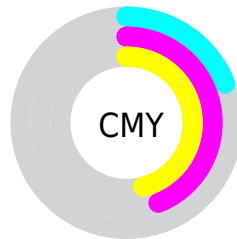
- Red (81%)
- Green (56%)
- Blue (54%)



- Red (81%)
- Yellow (56%)
- Blue (54%)



- Cyan (0%)
- Magenta (31%)
- Yellow (33%)
- Black (19%)



- Cyan (19%)
- Magenta (44%)
- Yellow (46%)

Brightness & Saturation Gradients

These gradients show how the Hex color CF8F8A changes by changing the brightness by 10 percent. The first figure shows a shift by +10% for each color and the second figure -10%.

Similar to the brightness gradients but the following saturation gradients show a change of the Hex color CF8F8A by changing the saturation by 10% instead.

 CF8F8A

 CF8F8A

FFFFFF

 B37571

 FFC5BF

 975C58

 FFE1DB

 7C4441

 FFFEF8

 612D2B

 481616

 300000

 0C0000

 000000

 CF8F8A

 CF8F8A

 CF7C75

 CFA29F

 CF6961

 CFB5B3

 CF554C

 CFC9C8

 CF4237

 CFDCDD

 CF2F22

 CFEFF1

 CF1C0E

 CFFFFFF

 CF0F00

Harmonies

Analogous

The Analogous color harmony consists of three colors that are next to each other on the color wheel.



CC8EA2



CF8F8A



C59578

Triad

The Triadic color harmony groups three colors that are evenly spaced from another and form a triangle on the color wheel.



CF8F8A



7DAA85



7EA2CF

Complementary

The Complementary color scheme is a pair of colors which are on the opposite of each other on the color wheel.



CF8F8A



8ACACF

Split Complementary

Split-complementary colors differ from the complementary color scheme. The scheme consists of three colors, the original color and two neighbors of the complement color.



60A8C7



CF8F8A



63AC9D

Square

The Square scheme is like the rectangle color scheme, but the four colors are evenly spaced on the color wheel.



CF8F8A



99A474



55ACB5



A09AC9

Rectangle

The Rectangle color scheme consists of four colors that form a rectangle on the color wheel.



CF8F8A



B99A71



55ACB5



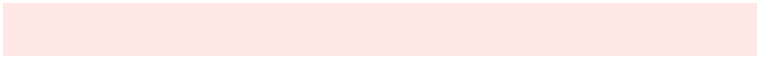
73A4CD

Sweetspot

The Sweet Spot groups the original color and five complimentary colors.



CF8F8A



FFE7E6



CF8ACA



807170



000000



808080

Same Dimension

The Same Dimension uses a secret algorithm to generate beautiful new colors.



CF8F8A



FFA099



CFB18A



695F5E



A80C00



290300

Inverse Universe

The Inverse Universe completely reimagines the original color for something new.



8ACACF



99F8FF



8AA8CF



5E6869



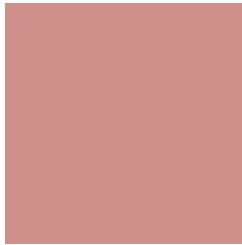
009CA8



002629

Previews

White Background



This preview shows how the Hex color CF8F8A looks on a white background.

Color Contrast Check

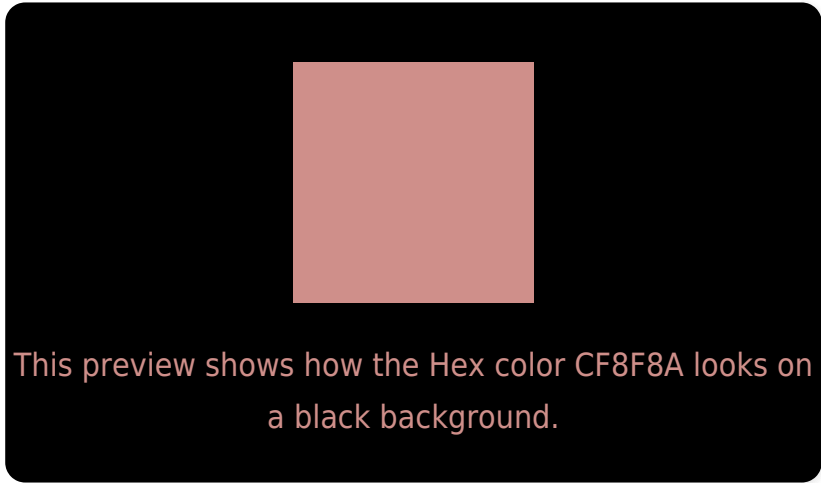
Large Text (above 18pt) WCAG AA × Fail

Any Text WCAG AA × Fail

Large Text (above 18pt) WCAG AAA × Fail

Any Text WCAG AAA × Fail

Black Background



Color Contrast Check

Large Text (above 18pt) WCAG AA ✓ Pass

Any Text WCAG AA ✓ Pass

Large Text (above 18pt) WCAG AAA ✓ Pass

Any Text WCAG AAA ✓ Pass

If you want to check with other color combinations, try the [Color Contrast Checker](#).

Hex CF8F8A Background



This preview shows how black text looks on a background with the Hex color CF8F8A.



This preview shows how white text looks on a background with the Hex color CF8F8A.

Color Blindness Simulation

Color vision deficiency is a very complex topic, and I could not describe the different causes any better than Wikipedia does, so if you want to learn more, you should check out their [article about color blindness](#).

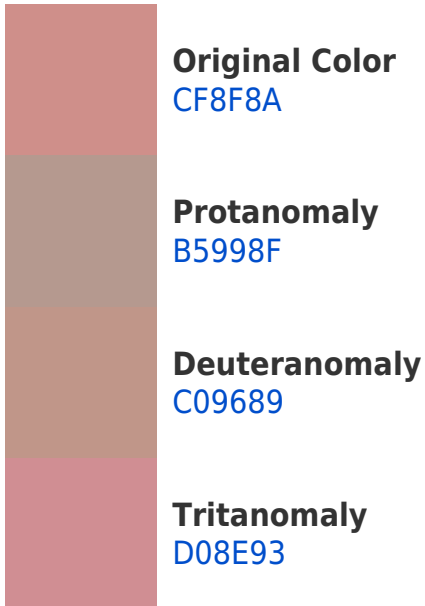
Dichromacy



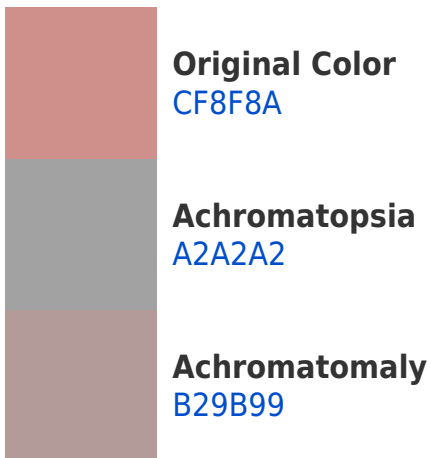


Tritanopia
D08D98

Trichromacy



Monochromacy



CSS Examples

Text

The CSS property to change the color of the text to Hex CF8F8A is called "color". The color property can be set on classes, ids or directly on the HTML element.

This example shows how text in the color #CF8F8A looks like.

```
.text, #text, p{  
    color:#CF8F8A  
}
```

If you want to add a text shadow in that color use the text-shadow property, you can generate a text shadow directly with our [CSS Text Shadow Generator](#).

Here you see how black text with a 4 pixel #CF8F8A colored shadow looks like.

```
.shadow{ text-shadow: 4px 4px 2px #CF8F8A
}
```

Border

The CSS property to change the border of an element to Hex CF8F8A is called "border". The border property can be set on classes, ids or directly on the HTML element.

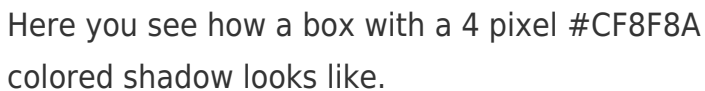
This example shows the color as border, it can be applied via the CSS property "border" or "border-color".

```
.border, #border, table{ border:4px solid
#CF8F8A }
```

If only the border color should be changed use the property `border-color`.

```
.border{ border-color:#CF8F8A }
```

If you want to add a box shadow in that color use:



Here you see how a box with a 4 pixel #CF8F8A colored shadow looks like.

```
.boxshadow{ -moz-box-shadow:4px 4px 4px  
4px #CF8F8A; -webkit-box-shadow:4px 4px  
4px 4px #CF8F8A; box-shadow:4px 4px 4px  
4px #CF8F8A }
```

Background

The CSS property to change the background color of an element to Hex CF8F8A is called "background". The background property can be set on classes, ids or directly on the HTML element.

```
.background, #background, body{  
background:#CF8F8A }
```

If only the background color should be changed can be used:

```
.background{ background-color:#CF8F8A }
```

This example shows the color as background, it is applied via the CSS property "background".

To optimize and compress your CSS code, you can use our [online CSS compressor and optimizer](#) based on csstidy. If you want to create a linear or radial gradient as background or border, check our [CSS Gradient Generator](#).

Hey! You found this booklet interesting? Support Converting Colors with the new Membership Option!

The pro membership hides all ads, plus gives you double the colors in the color bucket, and more awesome pro features!

[Learn more, Memberships starting at \\$2.50/m!](#)

**Follow me
on Twitter!**

@ConvertingColor