

Converting Colors

Hex(CF9090)

Have a look what the booklet for
Hex(CF9090) contains.

Hex(CF9090)	3
<i>Conversions</i>	4
<i>Details</i>	6
<i>Harmonies</i>	11
<i>Previews</i>	23
<i>Color Blindness Simulation</i>	26
<i>CSS Examples</i>	29

Color

Hex(CF9090)

Conversions

Conversions Part 1

Format	Color
Hex	CF9090
RGB	207, 144, 144
RGB Percent	81%, 56%, 56%
CMY	0.1882, 0.4353, 0.4353
CMYK	0.00, 0.30, 0.30, 0.19
HSL	0°, 40%, 69%
HSV	0°, 30%, 81%
XYZ	40.7394, 35.2255, 31.0376
YIQ	162.8370, 37.5480, 13.3560

Conversions

Conversions Part 2

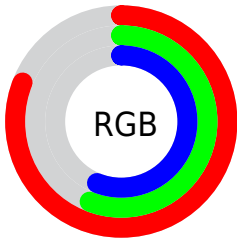
Format	Color
R_{YB}	207, 144, 144
Decimal	13602960
CIE _{Lab}	65.92, 23.87, 9.62
CIE _{LCh}	66, 25.736, 21.957
Yxy	35.2255, 0.3807, 0.3292
Android (android.graphics.Color)	4291793040 (0xFFCF9090)
YUV	162.8370, -9.2866, 38.7310
Hunter-Lab	59.3511, 18.6605, 10.5402

Details

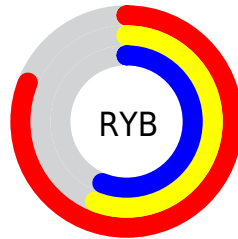
The Hex color **CF9090** is a light color, and the websafe version is hex **CC9999**. A complement of this color would be **90CFCF**, and the grayscale version is **A3A3A3**.

A 20% lighter version of the original color is **FFC6C6**, and **975D5E** is the 20% darker color. If you saturate the color by 10%, you get **CF7B7B**, and if you desaturate by 10%, it is **CFA5A5**.

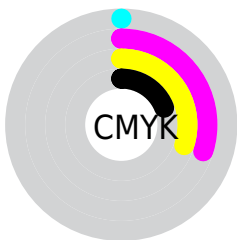
Distribution



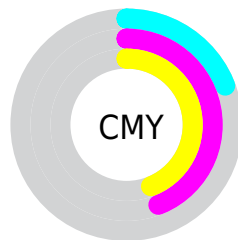
- Red (81%)
- Green (56%)
- Blue (56%)



- Red (81%)
- Yellow (56%)
- Blue (56%)



- Cyan (0%)
- Magenta (30%)
- Yellow (30%)
- Black (19%)



- Cyan (19%)
- Magenta (44%)
- Yellow (44%)

Brightness & Saturation Gradients

These gradients show how the Hex color CF9090 changes by changing the brightness by 10 percent. The first figure shows a shift by +10% for each color and the second figure -10%.

Similar to the brightness gradients but the following saturation gradients show a change of the Hex color CF9090 by changing the saturation by 10% instead.

 CF9090

 CF9090

FFFFFF

 B37676

 FFC6C6

 975D5E

 FFE2E2

 7C4546

FFFFFFE

 622E30

 48171B

 310000

 100000

 000000

 CF9090

 CF9090

 CF7B7B

 CFA5A5

 CF6767

 CFB9B9

 CF5252

 CFCECE

 CF3D3D

 CFE3E3

 CF2929

 CFF8F8

 CF1414

 CFFFFFF

 CF0000

Harmonies

Analogous

The Analogous color harmony consists of three colors that are next to each other on the color wheel.



CA90A7



CF9090



C8957D

Triad

The Triadic color harmony groups three colors that are evenly spaced from another and form a triangle on the color wheel.



CF9090



85AA83



7AA4CD

Complementary

The Complementary color scheme is a pair of colors which are on the opposite of each other on the color wheel.



CF9090



90CFCF

Split Complementary

Split-complementary colors differ from the complementary color scheme. The scheme consists of three colors, the original color and two neighbors of the complement color.



60AAC4



CF9090



6BAD99

Square

The Square scheme is like the rectangle color scheme, but the four colors are evenly spaced on the color wheel.



CF9090



9FA475



5BADB1



9B9CCB

Rectangle

The Rectangle color scheme consists of four colors that form a rectangle on the color wheel.



CF9090



BD9A75



5BADB1



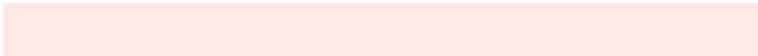
70A6CB

Sweetspot

The Sweet Spot groups the original color and five complimentary colors.



CF9090



FFE8E8



CF90CF



807171



000000



808080

Same Dimension

The Same Dimension uses a secret algorithm to generate beautiful new colors.



CF9090



FFA1A1



CFB090



695E5E



A80000



290000

Inverse Universe

The Inverse Universe completely reimagines the original color for something new.



90CFCF



A1FFFF



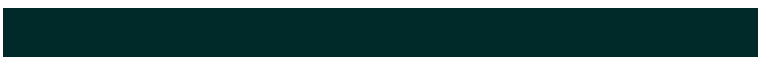
90B0CF



5E6969



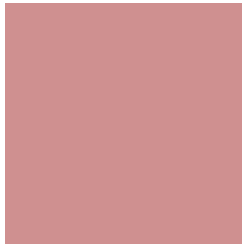
00A8A8



002929

Previews

White Background



This preview shows how the Hex color CF9090 looks on a white background.

Color Contrast Check

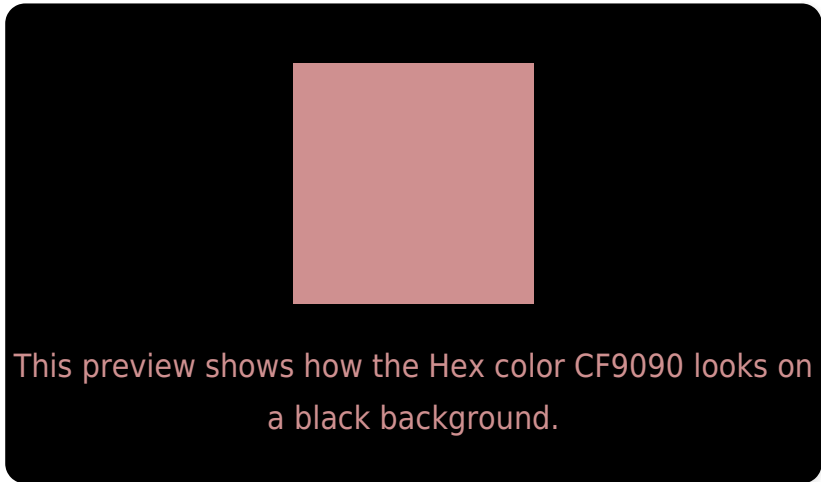
Large Text (above 18pt) WCAG AA × Fail

Any Text WCAG AA × Fail

Large Text (above 18pt) WCAG AAA × Fail

Any Text WCAG AAA × Fail

Black Background



Color Contrast Check

Large Text (above 18pt) WCAG AA ✓ Pass

Any Text WCAG AA ✓ Pass

Large Text (above 18pt) WCAG AAA ✓ Pass

Any Text WCAG AAA ✓ Pass

If you want to check with other color combinations, try the [Color Contrast Checker](#).

Hex CF9090 Background



This preview shows how black text looks on a background with the Hex color CF9090.



This preview shows how white text looks on a background with the Hex color CF9090.

Color Blindness Simulation

Color vision deficiency is a very complex topic, and I could not describe the different causes any better than Wikipedia does, so if you want to learn more, you should check out their [article about color blindness](#).

Dichromacy





Tritanopia
D08F99

Trichromacy



Original Color
CF9090

Protanomaly
B49A95

Deuteranomaly
C0978F

Tritanomaly
D08F96

Monochromacy



Original Color
CF9090

Achromatopsia
A3A3A3

Achromatomaly
B39C9C

CSS Examples

Text

The CSS property to change the color of the text to Hex CF9090 is called "color". The color property can be set on classes, ids or directly on the HTML element.

This example shows how text in the color #CF9090 looks like.

```
.text, #text, p{  
    color:#CF9090  
}
```

If you want to add a text shadow in that color use the text-shadow property, you can generate a text shadow directly with our [CSS Text Shadow Generator](#).

Here you see how black text with a 4 pixel #CF9090 colored shadow looks like.

```
.shadow{ text-shadow: 4px 4px 2px #CF9090
}
```

Border

The CSS property to change the border of an element to Hex CF9090 is called "border". The border property can be set on classes, ids or directly on the HTML element.

This example shows the color as border, it can be applied via the CSS property "border" or "border-color".

```
.border, #border, table{ border:4px solid
#CF9090 }
```

If only the border color should be changed use the property `border-color`.

```
.border{ border-color:#CF9090 }
```

If you want to add a box shadow in that color use:

Here you see how a box with a 4 pixel #CF9090 colored shadow looks like.

```
.boxshadow{ -moz-box-shadow:4px 4px 4px  
4px #CF9090; -webkit-box-shadow:4px 4px  
4px 4px #CF9090; box-shadow:4px 4px 4px  
4px #CF9090 }
```

Background

The CSS property to change the background color of an element to Hex CF9090 is called "background". The background property can be set on classes, ids or directly on the HTML element.

```
.background, #background, body{  
background:#CF9090 }
```

If only the background color should be changed can be used:

```
.background{ background-color:#CF9090 }
```

This example shows the color as background, it is applied via the CSS property "background".

To optimize and compress your CSS code, you can use our [online CSS compressor and optimizer](#) based on csstidy. If you want to create a linear or radial gradient as background or border, check our [CSS Gradient Generator](#).

Hey! You found this booklet interesting? Support Converting Colors with the new Membership Option!

The pro membership hides all ads, plus gives you double the colors in the color bucket, and more awesome pro features!

[Learn more, Memberships starting at \\$2.50/m!](#)

**Follow me
on Twitter!**

@ConvertingColor