

Converting Colors

Hex(CF9885)

Have a look what the booklet for
Hex(CF9885) contains.

Hex(CF9885)	3
<i>Conversions</i>	4
<i>Details</i>	6
<i>Harmonies</i>	11
<i>Previews</i>	23
<i>Color Blindness Simulation</i>	26
<i>CSS Examples</i>	29

Color

Hex(CF9885)

Conversions

Conversions Part 1

Format	Color
Hex	CF9885
RGB	207, 152, 133
RGB Percent	81%, 60%, 52%
CMY	0.1882, 0.4039, 0.4784
CMYK	0.00, 0.27, 0.36, 0.19
HSL	15°, 44%, 67%
HSV	15°, 36%, 81%
XYZ	41.1940, 37.4153, 27.2410
YIQ	166.2790, 38.8790, 5.7510

Conversions

Conversions Part 2

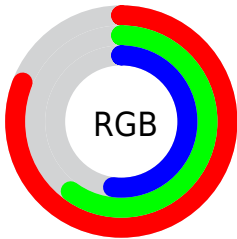
Format	Color
R _Y B	207, 159, 133
Decimal	13604997
CIE Lab	67.59, 18.10, 18.09
CIE LCh	68, 25.589, 44.996
Yxy	37.4153, 0.3892, 0.3535
Android (android.graphics.Color)	4291795077 (0xFFCF9885)
YUV	166.2790, -16.4065, 35.7123
Hunter-Lab	61.1681, 13.1678, 16.4130

Details

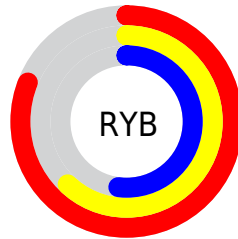
The Hex color **CF9885** is a light color, and the websafe version is hex **CC9999**. A complement of this color would be **85BCCF**, and the grayscale version is **A6A6A6**.

A 20% lighter version of the original color is **FFCEBA**, and **976553** is the 20% darker color. If you saturate the color by 10%, you get **CF8970**, and if you desaturate by 10%, it is **CFA79A**.

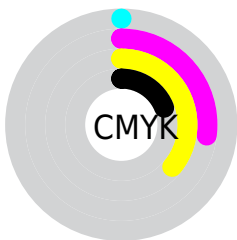
Distribution



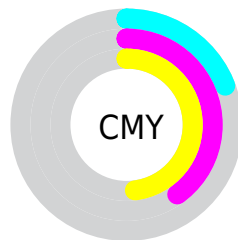
- Red (81%)
- Green (60%)
- Blue (52%)



- Red (81%)
- Yellow (62%)
- Blue (52%)



- Cyan (0%)
- Magenta (27%)
- Yellow (36%)
- Black (19%)



- Cyan (19%)
- Magenta (40%)
- Yellow (48%)

Brightness & Saturation Gradients

These gradients show how the Hex color CF9885 changes by changing the brightness by 10 percent. The first figure shows a shift by +10% for each color and the second figure -10%.

Similar to the brightness gradients but the following saturation gradients show a change of the Hex color CF9885 by changing the saturation by 10% instead.

 CF9885

 CF9885

FFFFFF

 B37E6C

 FFCEBA

 976553

 FFEBD6

 7C4D3C

 FFFFF2

 623526

 481F12

 300A00

 120000

 000000

 CF9885

 CF9885

 CF8970

 CFA79A

 CF795C

 CFB7AE

 CF6A47

 CFC6C3

 CF5A32

 CFD6D8

 CF4B1E

 CFE5EC

 CF3C09

 CFF4FF

 CF3500

 CFFFFFF

Harmonies

Analogous

The Analogous color harmony consists of three colors that are next to each other on the color wheel.



D3949A



CF9885



C09F78

Triad

The Triadic color harmony groups three colors that are evenly spaced from another and form a triangle on the color wheel.



CF9885



76B198



98A3D1

Complementary

The Complementary color scheme is a pair of colors which are on the opposite of each other on the color wheel.



CF9885



85BCCF

Split Complementary

Split-complementary colors differ from the complementary color scheme. The scheme consists of three colors, the original color and two neighbors of the complement color.



78AAD1



CF9885



63B2B0

Square

The Square scheme is like the rectangle color scheme, but the four colors are evenly spaced on the color wheel.



CF9885



8FAD83



62AFC4



B69BC5

Rectangle

The Rectangle color scheme consists of four colors that form a rectangle on the color wheel.



CF9885



B2A477



62AFC4



8DA5D2

Sweetspot

The Sweet Spot groups the original color and five complimentary colors.



CF9885



FFEAE3



CF85BD



80736F



000000



808080

Same Dimension

The Same Dimension uses a secret algorithm to generate beautiful new colors.



CF9885



FFAE91



CFBD85



69615E



A82B00



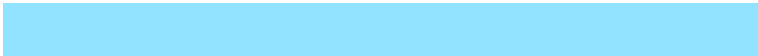
290A00

Inverse Universe

The Inverse Universe completely reimagines the original color for something new.



85BCCF



91E3FF



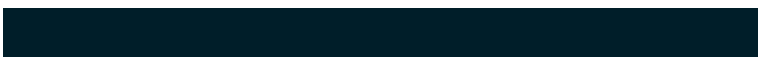
8598CF



5E6669



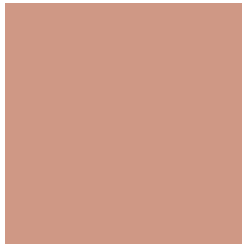
007DA8



001E29

Previews

White Background



This preview shows how the Hex color CF9885 looks on a white background.

Color Contrast Check

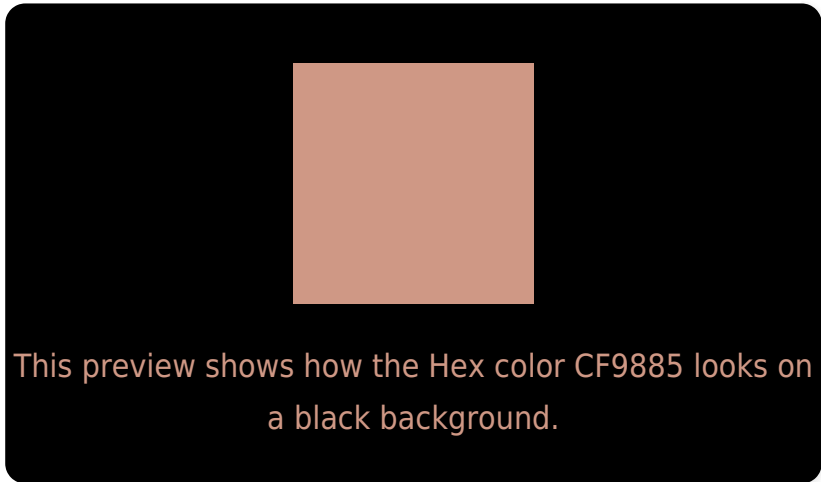
Large Text (above 18pt) WCAG AA × Fail

Any Text WCAG AA × Fail

Large Text (above 18pt) WCAG AAA × Fail

Any Text WCAG AAA × Fail

Black Background



Color Contrast Check

Large Text (above 18pt) WCAG AA ✓ Pass

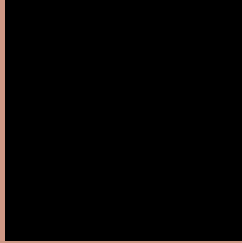
Any Text WCAG AA ✓ Pass

Large Text (above 18pt) WCAG AAA ✓ Pass

Any Text WCAG AAA ✓ Pass

If you want to check with other color combinations, try the [Color Contrast Checker](#).

Hex CF9885 Background



This preview shows how black text looks on a background with the Hex color CF9885.




This preview shows how white text looks on a background with the Hex color CF9885.

Color Blindness Simulation

Color vision deficiency is a very complex topic, and I could not describe the different causes any better than Wikipedia does, so if you want to learn more, you should check out their [article about color blindness](#).

Dichromacy





Tritanopia
D294A0

Trichromacy



Original Color
CF9885

Protanomaly
BAA089

Deuteranomaly
C59C84

Tritanomaly
D19596

Monochromacy



Original Color
CF9885

Achromatopsia
A6A6A6

Achromatomaly
B5A19A

CSS Examples

Text

The CSS property to change the color of the text to Hex CF9885 is called "color". The color property can be set on classes, ids or directly on the HTML element.

This example shows how text in the color #CF9885 looks like.

```
.text, #text, p{  
    color:#CF9885  
}
```

If you want to add a text shadow in that color use the text-shadow property, you can generate a text shadow directly with our [CSS Text Shadow Generator](#).

Here you see how black text with a 4 pixel #CF9885 colored shadow looks like.

```
.shadow{ text-shadow: 4px 4px 2px #CF9885
}
```

Border

The CSS property to change the border of an element to Hex CF9885 is called "border". The border property can be set on classes, ids or directly on the HTML element.

This example shows the color as border, it can be applied via the CSS property "border" or "border-color".

```
.border, #border, table{ border:4px solid
#CF9885 }
```

If only the border color should be changed use the property `border-color`.

```
.border{ border-color:#CF9885 }
```

If you want to add a box shadow in that color use:

Here you see how a box with a 4 pixel #CF9885 colored shadow looks like.

```
.boxshadow{ -moz-box-shadow:4px 4px 4px  
4px #CF9885; -webkit-box-shadow:4px 4px  
4px 4px #CF9885; box-shadow:4px 4px 4px  
4px #CF9885 }
```

Background

The CSS property to change the background color of an element to Hex CF9885 is called "background". The background property can be set on classes, ids or directly on the HTML element.

```
.background, #background, body{  
background:#CF9885 }
```

If only the background color should be changed can be used:

```
.background{ background-color:#CF9885 }
```

This example shows the color as background, it is applied via the CSS property "background".

To optimize and compress your CSS code, you can use our [online CSS compressor and optimizer](#) based on csstidy. If you want to create a linear or radial gradient as background or border, check our [CSS Gradient Generator](#).

Hey! You found this booklet interesting? Support Converting Colors with the new Membership Option!

The pro membership hides all ads, plus gives you double the colors in the color bucket, and more awesome pro features!

[Learn more, Memberships starting at \\$2.50/m!](#)

**Follow me
on Twitter!**

@ConvertingColor