

Converting Colors

Hex(CF9889)

Have a look what the booklet for
Hex(CF9889) contains.

Hex(CF9889)	3
<i>Conversions</i>	4
<i>Details</i>	6
<i>Harmonies</i>	11
<i>Previews</i>	23
<i>Color Blindness Simulation</i>	26
<i>CSS Examples</i>	29

Color

Hex(CF9889)

Conversions

Conversions Part 1

Format	Color
Hex	CF9889
RGB	207, 152, 137
RGB Percent	81%, 60%, 54%
CMY	0.1882, 0.4039, 0.4627
CMYK	0.00, 0.27, 0.34, 0.19
HSL	13°, 42%, 67%
HSV	13°, 34%, 81%
XYZ	41.4757, 37.5280, 28.7245
YIQ	166.7350, 37.5950, 6.9950

Conversions

Conversions Part 2

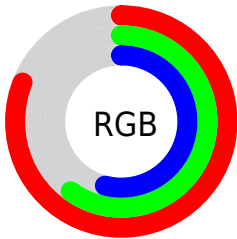
Format	Color
R_{YB}	207, 156, 137
Decimal	13605001
CIE Lab	67.67, 18.59, 15.99
CIE LCh	68, 24.524, 40.693
Yxy	37.5280, 0.3850, 0.3484
Android (android.graphics.Color)	4291795081 (0xFFCF9889)
YUV	166.7350, -14.6594, 35.3124
Hunter-Lab	61.2601, 13.6469, 15.0813

Details

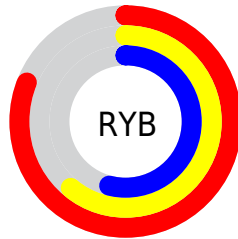
The Hex color **CF9889** is a light color, and the websafe version is hex **CC9999**. A complement of this color would be **89C0CF**, and the grayscale version is **A7A7A7**.

A 20% lighter version of the original color is **FFCEBE**, and **976557** is the 20% darker color. If you saturate the color by 10%, you get **CF8874**, and if you desaturate by 10%, it is **CFA89E**.

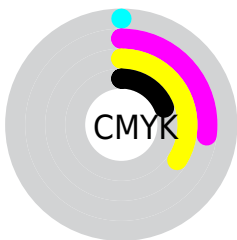
Distribution



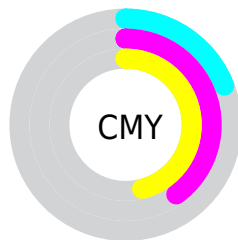
- Red (81%)
- Green (60%)
- Blue (54%)



- Red (81%)
- Yellow (61%)
- Blue (54%)



- Cyan (0%)
- Magenta (27%)
- Yellow (34%)
- Black (19%)



- Cyan (19%)
- Magenta (40%)
- Yellow (46%)

Brightness & Saturation Gradients

These gradients show how the Hex color CF9889 changes by changing the brightness by 10 percent. The first figure shows a shift by +10% for each color and the second figure -10%.

Similar to the brightness gradients but the following saturation gradients show a change of the Hex color CF9889 by changing the saturation by 10% instead.

 CF9889

 CF9889

FFFFFF

 B37E70

 FFCEBE

 976557

 FFEFDA

 7C4D40

 FFFFF7

 62352A

 481F15

 310A00

 140000

 000000

 CF9889

 CF9889

 CF8874

 CFA89E

 CF7760

 CFB9B2

 CF674B

 CFC9C7

 CF5736

 CFD9DC

 CF4721

 CFE9F1

 CF360D

 CFFAFF

 CF2C00

 CFFFFFF

Harmonies

Analogous

The Analogous color harmony consists of three colors that are next to each other on the color wheel.



D2959E



CF9889



C29F7C

Triad

The Triadic color harmony groups three colors that are evenly spaced from another and form a triangle on the color wheel.



CF9889



7BB096



95A4D0

Complementary

The Complementary color scheme is a pair of colors which are on the opposite of each other on the color wheel.



CF9889



89C0CF

Split Complementary

Split-complementary colors differ from the complementary color scheme. The scheme consists of three colors, the original color and two neighbors of the complement color.



77ABCE



CF9889



68B1AC

Square

The Square scheme is like the rectangle color scheme, but the four colors are evenly spaced on the color wheel.



CF9889



94AC83



65B0C1



B29CC6

Rectangle

The Rectangle color scheme consists of four colors that form a rectangle on the color wheel.



CF9889



B5A479



65B0C1



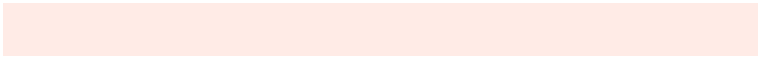
8AA7D1

Sweetspot

The Sweet Spot groups the original color and five complimentary colors.



CF9889



FFEBE6



CF89C1



807370



000000



808080

Same Dimension

The Same Dimension uses a secret algorithm to generate beautiful new colors.



CF9889



FFAD96



CFBA89



69605E



A82400



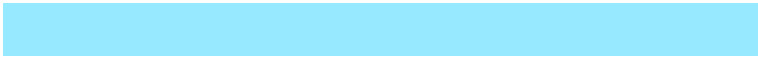
290900

Inverse Universe

The Inverse Universe completely reimagines the original color for something new.



89C0CF



96E9FF



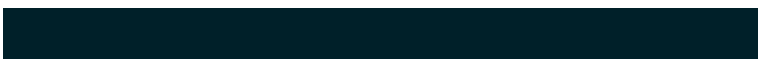
899ECF



5E6669



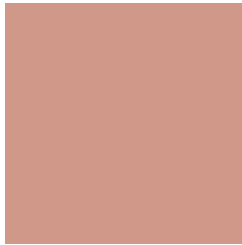
0084A8



002029

Previews

White Background



This preview shows how the Hex color CF9889 looks on a white background.

Color Contrast Check

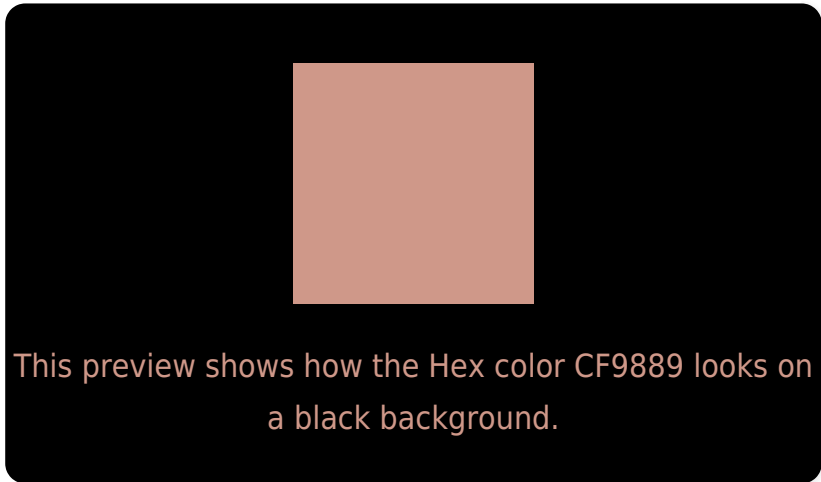
Large Text (above 18pt) WCAG AA × Fail

Any Text WCAG AA × Fail

Large Text (above 18pt) WCAG AAA × Fail

Any Text WCAG AAA × Fail

Black Background



Color Contrast Check

Large Text (above 18pt) WCAG AA ✓ Pass

Any Text WCAG AA ✓ Pass

Large Text (above 18pt) WCAG AAA ✓ Pass

Any Text WCAG AAA ✓ Pass

If you want to check with other color combinations, try the [Color Contrast Checker](#).

Hex CF9889 Background



This preview shows how black text looks on a background with the Hex color CF9889.

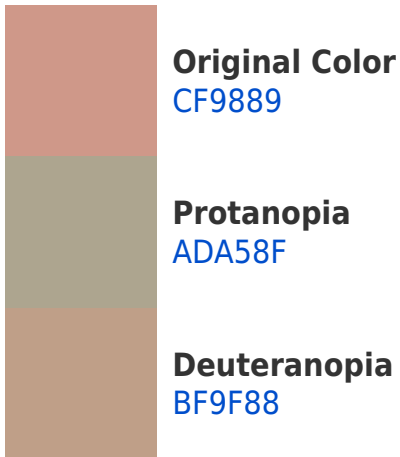


This preview shows how white text looks on a background with the Hex color CF9889.

Color Blindness Simulation

Color vision deficiency is a very complex topic, and I could not describe the different causes any better than Wikipedia does, so if you want to learn more, you should check out their [article about color blindness](#).

Dichromacy





Tritanopia
D195A0

Trichromacy



Original Color
CF9889

Protanomaly
B9A08D

Deuteranomaly
C59C88

Tritanomaly
D09698

Monochromacy



Original Color
CF9889

Achromatopsia
A7A7A7

Achromatomaly
B6A29C

CSS Examples

Text

The CSS property to change the color of the text to Hex CF9889 is called "color". The color property can be set on classes, ids or directly on the HTML element.

This example shows how text in the color #CF9889 looks like.

```
.text, #text, p{  
    color:#CF9889  
}
```

If you want to add a text shadow in that color use the text-shadow property, you can generate a text shadow directly with our [CSS Text Shadow Generator](#).

Here you see how black text with a 4 pixel #CF9889 colored shadow looks like.

```
.shadow{ text-shadow: 4px 4px 2px #CF9889
}
```

Border

The CSS property to change the border of an element to Hex CF9889 is called "border". The border property can be set on classes, ids or directly on the HTML element.

This example shows the color as border, it can be applied via the CSS property "border" or "border-color".

```
.border, #border, table{ border:4px solid
#CF9889 }
```

If only the border color should be changed use the property `border-color`.

```
.border{ border-color:#CF9889 }
```

If you want to add a box shadow in that color use:

Here you see how a box with a 4 pixel #CF9889 colored shadow looks like.

```
.boxshadow{ -moz-box-shadow:4px 4px 4px  
4px #CF9889; -webkit-box-shadow:4px 4px  
4px 4px #CF9889; box-shadow:4px 4px 4px  
4px #CF9889 }
```

Background

The CSS property to change the background color of an element to Hex CF9889 is called "background". The background property can be set on classes, ids or directly on the HTML element.

```
.background, #background, body{  
background:#CF9889 }
```

If only the background color should be changed can be used:

```
.background{ background-color:#CF9889 }
```

This example shows the color as background, it is applied via the CSS property "background".

To optimize and compress your CSS code, you can use our [online CSS compressor and optimizer](#) based on csstidy. If you want to create a linear or radial gradient as background or border, check our [CSS Gradient Generator](#).

Hey! You found this booklet interesting? Support Converting Colors with the new Membership Option!

The pro membership hides all ads, plus gives you double the colors in the color bucket, and more awesome pro features!

[Learn more, Memberships starting at \\$2.50/m!](#)

**Follow me
on Twitter!**

@ConvertingColor