

# Converting Colors

Hex(CF9893)

Have a look what the booklet for  
Hex(CF9893) contains.

<b>Hex(CF9893)</b> .....	3
<b><i>Conversions</i></b> .....	4
<b><i>Details</i></b> .....	6
<b><i>Harmonies</i></b> .....	11
<b><i>Previews</i></b> .....	23
<b><i>Color Blindness Simulation</i></b> .....	26
<b><i>CSS Examples</i></b> .....	29

**Color**

**Hex(CF9893)**

# Conversions

## Conversions Part 1

Format	Color
Hex	CF9893
RGB	207, 152, 147
RGB Percent	81%, 60%, 58%
CMY	0.1882, 0.4039, 0.4235
CMYK	0.00, 0.27, 0.29, 0.19
HSL	5°, 38%, 69%
HSV	5°, 29%, 81%
XYZ	42.2268, 37.8285, 32.6798
YIQ	167.8750, 34.3850, 10.1050

# Conversions

## Conversions Part 2

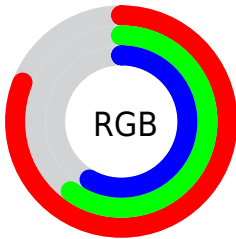
<b>Format</b>	<b>Color</b>
<b>R<sub>YB</sub></b>	207, 152, 147
Decimal	13605011
CIE Lab	67.89, 19.91, 10.74
CIE LCh	68, 22.621, 28.339
Yxy	37.8285, 0.3746, 0.3356
Android (android.graphics.Color)	4291795091 (0xFFCF9893)
YUV	167.8750, -10.2914, 34.3126
Hunter-Lab	61.5048, 14.9177, 11.5504

# Details

The Hex color **CF9893** is a light color, and the websafe version is hex **CC9999**. A complement of this color would be **93CACF**, and the grayscale version is **A8A8A8**.

A 20% lighter version of the original color is **FFCFC9**, and **976560** is the 20% darker color. If you saturate the color by 10%, you get **CF857E**, and if you desaturate by 10%, it is **CFABA8**.

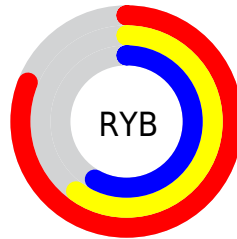
# Distribution



Red (81%)

Green (60%)

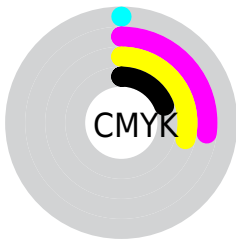
Blue (58%)



Red (81%)

Yellow (60%)

Blue (58%)

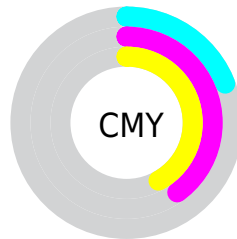


Cyan (0%)

Magenta (27%)

Yellow (29%)

Black (19%)



Cyan (19%)

Magenta (40%)

Yellow (42%)

# Brightness & Saturation Gradients

These gradients show how the Hex color CF9893 changes by changing the brightness by 10 percent. The first figure shows a shift by +10% for each color and the second figure -10%.

Similar to the brightness gradients but the following saturation gradients show a change of the Hex color CF9893 by changing the saturation by 10% instead.



 CF9893

 CF9893

FFFFFF

 B37E79

 FFCFC9

 976560

 FFEBE5

 7D4C49

 623532

 491F1D

 320904

 170000

 000000

 CF9893

 CF9893

 CF857E

 CFABA8

 CF726A

 CFBEBC

 CF5F55

 CFD1D1

 CF4C40

 CFE4E6

 CF392C

 CFF7FB

 CF2617

 CFFFFFF

 CF1302

 CF1100

# Harmonies

## Analogous

The Analogous color harmony consists of three colors that are next to each other on the color wheel.



CD97A7



CF9893



C79D83

# Triad

The Triadic color harmony groups three colors that are evenly spaced from another and form a triangle on the color wheel.



CF9893



89AF8F



8BA8CE

# Complementary

The Complementary color scheme is a pair of colors which are on the opposite of each other on the color wheel.



CF9893



93CACF

# Split Complementary

Split-complementary colors differ from the complementary color scheme. The scheme consists of three colors, the original color and two neighbors of the complement color.



74ADC7



CF9893



74B1A4

# Square

The Square scheme is like the rectangle color scheme, but the four colors are evenly spaced on the color wheel.



CF9893



A0AA81



6BB0B8



A7A1C9

# Rectangle

The Rectangle color scheme consists of four colors that form a rectangle on the color wheel.



CF9893



BCA17E



6BB0B8



82AACD

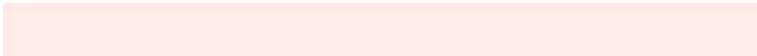


# Sweetspot

The Sweet Spot groups the original color and five complimentary colors.



CF9893



FFEAE8



CF93CA



807371



000000



808080



# Same Dimension

The Same Dimension uses a secret algorithm to generate beautiful new colors.



CF9893



FFADA6



CFB693



695F5E



A80E00



290300



# Inverse Universe

The Inverse Universe completely reimagines the original color for something new.



93CACF



A6F8FF



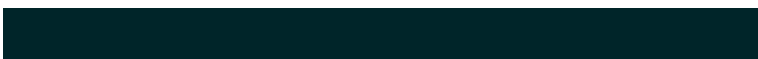
93ACCF



5E6869



009AA8

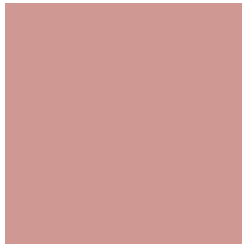


002529



# Previews

## White Background



This preview shows how the Hex color CF9893 looks on a white background.

## Color Contrast Check

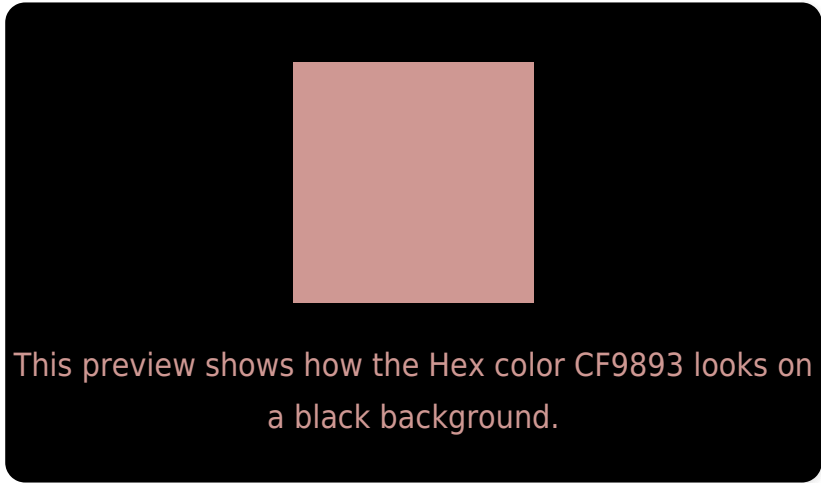
Large Text (above 18pt) WCAG AA × Fail

Any Text WCAG AA × Fail

Large Text (above 18pt) WCAG AAA × Fail

Any Text WCAG AAA × Fail

# Black Background



## Color Contrast Check

Large Text (above 18pt) WCAG AA ✓ Pass

Any Text WCAG AA ✓ Pass

Large Text (above 18pt) WCAG AAA ✓ Pass

Any Text WCAG AAA ✓ Pass

If you want to check with other color combinations, try the [Color Contrast Checker](#).



## Hex CF9893 Background



This preview shows how black text looks on a background with the Hex color CF9893.

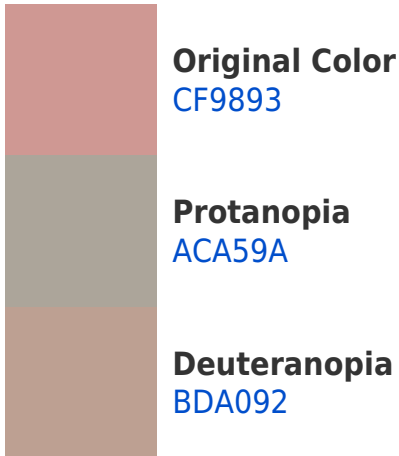


This preview shows how white text looks on a background with the Hex color CF9893.

# Color Blindness Simulation

Color vision deficiency is a very complex topic, and I could not describe the different causes any better than Wikipedia does, so if you want to learn more, you should check out their [article about color blindness](#).

## Dichromacy





**Tritanopia**  
D196A1

# Trichromacy



**Original Color**  
CF9893

**Protanomaly**  
B9A097

**Deuteranomaly**  
C49D92

**Tritanomaly**  
D0979C

# Monochromacy



**Original Color**  
CF9893

**Achromatopsia**  
A8A8A8

**Achromatomaly**  
B6A2A0

# CSS Examples

## Text

The CSS property to change the color of the text to Hex CF9893 is called "color". The color property can be set on classes, ids or directly on the HTML element.

This example shows how text in the color #CF9893 looks like.

```
.text, #text, p{  
    color:#CF9893  
}
```

If you want to add a text shadow in that color use the text-shadow property, you can generate a text shadow directly with our [CSS Text Shadow Generator](#).

Here you see how black text with a 4 pixel #CF9893 colored shadow looks like.

```
.shadow{ text-shadow: 4px 4px 2px #CF9893
}
```

## Border

The CSS property to change the border of an element to Hex CF9893 is called "border". The border property can be set on classes, ids or directly on the HTML element.

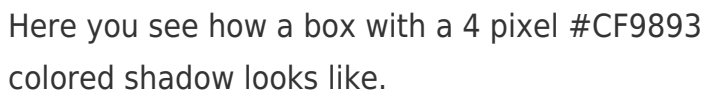
This example shows the color as border, it can be applied via the CSS property "border" or "border-color".

```
.border, #border, table{ border:4px solid
#CF9893 }
```

If only the border color should be changed use the property `border-color`.

```
.border{ border-color:#CF9893 }
```

If you want to add a box shadow in that color use:



Here you see how a box with a 4 pixel #CF9893 colored shadow looks like.

```
.boxshadow{ -moz-box-shadow:4px 4px 4px  
4px #CF9893; -webkit-box-shadow:4px 4px  
4px 4px #CF9893; box-shadow:4px 4px 4px  
4px #CF9893 }
```

# Background

The CSS property to change the background color of an element to Hex CF9893 is called "background". The background property can be set on classes, ids or directly on the HTML element.

```
.background, #background, body{  
background:#CF9893 }
```

If only the background color should be changed can be used:

```
.background{ background-color:#CF9893 }
```

This example shows the color as background, it is applied via the CSS property "background".

To optimize and compress your CSS code, you can use our [online CSS compressor and optimizer](#) based on csstidy. If you want to create a linear or radial gradient as background or border, check our [CSS Gradient Generator](#).



Hey! You found this booklet interesting? Support Converting Colors with the new Membership Option!

The pro membership hides all ads, plus gives you double the colors in the color bucket, and more awesome pro features!

**[Learn more, Memberships starting at \\$2.50/m!](#)**

**Follow me  
on Twitter!**

@ConvertingColor