

# Converting Colors

Hex(CF9993)

Have a look what the booklet for  
Hex(CF9993) contains.

<b>Hex(CF9993)</b> .....	3
<b><i>Conversions</i></b> .....	4
<b><i>Details</i></b> .....	6
<b><i>Harmonies</i></b> .....	11
<b><i>Previews</i></b> .....	23
<b><i>Color Blindness Simulation</i></b> .....	26
<b><i>CSS Examples</i></b> .....	29

# **Color**

**Hex(CF9993)**

# Conversions

## Conversions Part 1

Format	Color
Hex	CF9993
RGB	207, 153, 147
RGB Percent	81%, 60%, 58%
CMY	0.1882, 0.4000, 0.4235
CMYK	0.00, 0.26, 0.29, 0.19
HSL	6°, 38%, 69%
HSV	6°, 29%, 81%
XYZ	42.3898, 38.1544, 32.7341
YIQ	168.4620, 34.1100, 9.5820

# Conversions

## Conversions Part 2

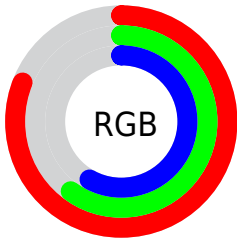
Format	Color
R <sub>Y</sub> B	207, 154, 147
Decimal	13605267
CIE Lab	68.13, 19.36, 11.08
CIE LCh	68, 22.310, 29.773
Yxy	38.1544, 0.3742, 0.3368
Android (android.graphics.Color)	4291795347 (0xFFCF9993)
YUV	168.4620, -10.5808, 33.7978
Hunter-Lab	61.7693, 14.4012, 11.8183

# Details

The Hex color **CF9993** is a light color, and the websafe version is hex **CC9999**. A complement of this color would be **93C9CF**, and the grayscale version is **A9A9A9**.

A 20% lighter version of the original color is **FFD0C9**, and **976660** is the 20% darker color. If you saturate the color by 10%, you get **CF867E**, and if you desaturate by 10%, it is **CFACA8**.

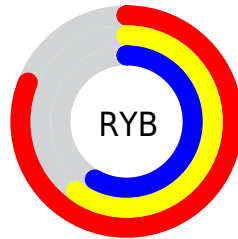
# Distribution



Red (81%)

Green (60%)

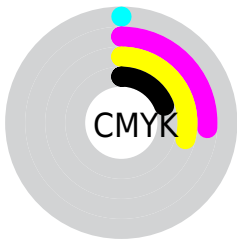
Blue (58%)



Red (81%)

Yellow (60%)

Blue (58%)

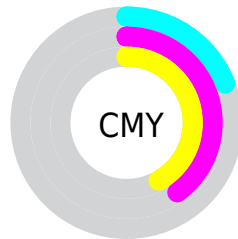


Cyan (0%)

Magenta (26%)

Yellow (29%)

Black (19%)



Cyan (19%)

Magenta (40%)

Yellow (42%)

# Brightness & Saturation Gradients

These gradients show how the Hex color CF9993 changes by changing the brightness by 10 percent. The first figure shows a shift by +10% for each color and the second figure -10%.

Similar to the brightness gradients but the following saturation gradients show a change of the Hex color CF9993 by changing the saturation by 10% instead.



 CF9993

 CF9993

FFFFFF

 B37F79

 FFD0C9

 976660

 FFECE5

 7D4D49

 633632

 49201D

 320A04

 180001

 000000

 CF9993

 CF9993

 CF867E

 CFACA8

 CF746A

 CFBEBC

 CF6155

 CFD1D1

 CF4E40

 CFE4E6

 CF3C2C

 CFF6FB

 CF2917

 CFFFFFF

 CF1702

 CF1500

# Harmonies

## Analogous

The Analogous color harmony consists of three colors that are next to each other on the color wheel.



CD98A7



CF9993



C69E84

# Triad

The Triadic color harmony groups three colors that are evenly spaced from another and form a triangle on the color wheel.



CF9993



89AF91



8EA8CE

# Complementary

The Complementary color scheme is a pair of colors which are on the opposite of each other on the color wheel.



CF9993



93C9CF

# Split Complementary

Split-complementary colors differ from the complementary color scheme. The scheme consists of three colors, the original color and two neighbors of the complement color.



76AEC8



CF9993



75B2A5

# Square

The Square scheme is like the rectangle color scheme, but the four colors are evenly spaced on the color wheel.



CF9993



A0AB83



6DB1B9



A9A1C9

# Rectangle

The Rectangle color scheme consists of four colors that form a rectangle on the color wheel.



CF9993



BCA27F



6DB1B9



85AACD

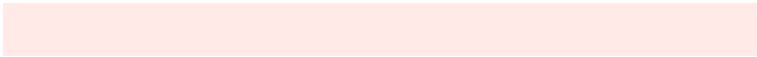


# Sweetspot

The Sweet Spot groups the original color and five complimentary colors.



CF9993



FFEAE8



CF93C9



807371



000000



808080



# Same Dimension

The Same Dimension uses a secret algorithm to generate beautiful new colors.



CF9993



FFAFA6



CFB793



695F5E



A81100



290400



# Inverse Universe

The Inverse Universe completely reimagines the original color for something new.



93C9CF



A6F6FF



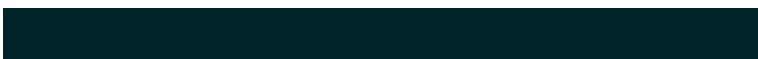
93ABCF



5E6869



0097A8

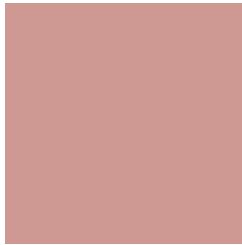


002529



# Previews

## White Background



This preview shows how the Hex color CF9993 looks on a white background.

## Color Contrast Check

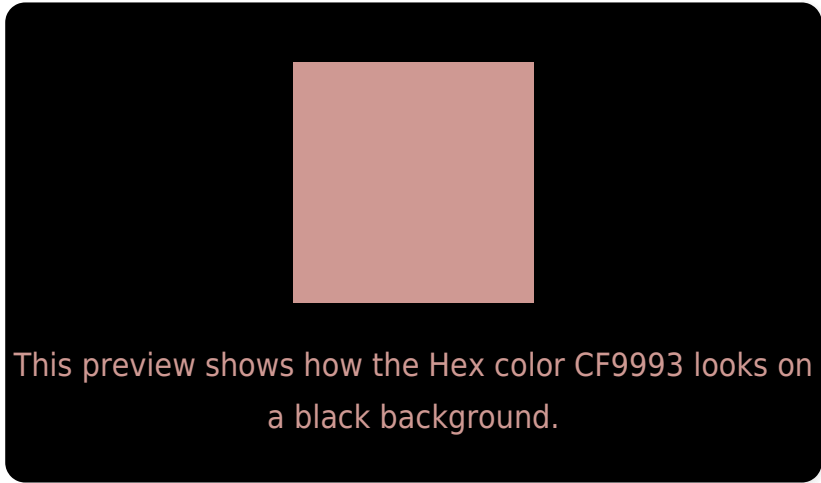
Large Text (above 18pt) WCAG AA × Fail

Any Text WCAG AA × Fail

Large Text (above 18pt) WCAG AAA × Fail

Any Text WCAG AAA × Fail

# Black Background



## Color Contrast Check

Large Text (above 18pt) WCAG AA ✓ Pass

Any Text WCAG AA ✓ Pass

Large Text (above 18pt) WCAG AAA ✓ Pass

Any Text WCAG AAA ✓ Pass

If you want to check with other color combinations, try the [Color Contrast Checker](#).



## Hex CF9993 Background



This preview shows how black text looks on a background with the Hex color CF9993.

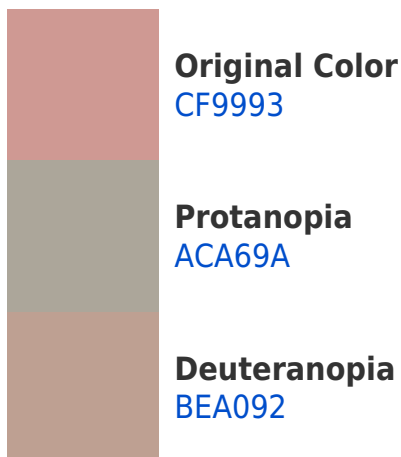


This preview shows how white text looks on a background with the Hex color CF9993.

# Color Blindness Simulation

Color vision deficiency is a very complex topic, and I could not describe the different causes any better than Wikipedia does, so if you want to learn more, you should check out their [article about color blindness](#).

## Dichromacy





**Tritanopia**  
D197A2

# Trichromacy



**Original Color**  
CF9993

**Protanomaly**  
B9A197

**Deuteranomaly**  
C49D92

**Tritanomaly**  
D0989D

# Monochromacy



**Original Color**  
CF9993

**Achromatopsia**  
A8A8A8

**Achromatomaly**  
B6A3A0

# CSS Examples

## Text

The CSS property to change the color of the text to Hex CF9993 is called "color". The color property can be set on classes, ids or directly on the HTML element.

This example shows how text in the color #CF9993 looks like.

```
.text, #text, p{  
    color:#CF9993  
}
```

If you want to add a text shadow in that color use the text-shadow property, you can generate a text shadow directly with our [CSS Text Shadow Generator](#).

Here you see how black text with a 4 pixel #CF9993 colored shadow looks like.

```
.shadow{ text-shadow: 4px 4px 2px #CF9993  
}
```

## Border

The CSS property to change the border of an element to Hex CF9993 is called "border". The border property can be set on classes, ids or directly on the HTML element.

This example shows the color as border, it can be applied via the CSS property "border" or "border-color".

```
.border, #border, table{ border:4px solid  
#CF9993 }
```

If only the border color should be changed use the property `border-color`.

```
.border{ border-color:#CF9993 }
```

If you want to add a box shadow in that color use:

Here you see how a box with a 4 pixel #CF9993 colored shadow looks like.

```
.boxshadow{ -moz-box-shadow:4px 4px 4px  
4px #CF9993; -webkit-box-shadow:4px 4px  
4px 4px #CF9993; box-shadow:4px 4px 4px  
4px #CF9993 }
```

# Background

The CSS property to change the background color of an element to Hex CF9993 is called "background". The background property can be set on classes, ids or directly on the HTML element.

```
.background, #background, body{  
background:#CF9993 }
```

If only the background color should be changed can be used:

```
.background{ background-color:#CF9993 }
```

This example shows the color as background, it is applied via the CSS property "background".

To optimize and compress your CSS code, you can use our [online CSS compressor and optimizer](#) based on csstidy. If you want to create a linear or radial gradient as background or border, check our [CSS Gradient Generator](#).



Hey! You found this booklet interesting? Support Converting Colors with the new Membership Option!

The pro membership hides all ads, plus gives you double the colors in the color bucket, and more awesome pro features!

**[Learn more, Memberships starting at \\$2.50/m!](#)**

**Follow me  
on Twitter!**

@ConvertingColor