

Converting Colors

Hex(CF9D9D)

Have a look what the booklet for
Hex(CF9D9D) contains.

Hex(CF9D9D)	3
<i>Conversions</i>	4
<i>Details</i>	6
<i>Harmonies</i>	11
<i>Previews</i>	23
<i>Color Blindness Simulation</i>	26
<i>CSS Examples</i>	29

Color

Hex(CF9D9D)

Conversions

Conversions Part 1

Format	Color
Hex	CF9D9D
RGB	207, 157, 157
RGB Percent	81%, 62%, 62%
CMY	0.1882, 0.3843, 0.3843
CMYK	0.00, 0.24, 0.24, 0.19
HSL	0°, 34%, 71%
HSV	0°, 24%, 81%
XYZ	43.8749, 39.8137, 37.2706
YIQ	171.9500, 29.8000, 10.6000

Conversions

Conversions Part 2

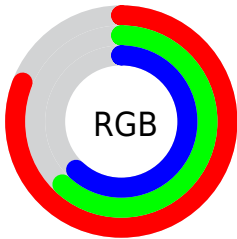
Format	Color
R _{YB}	207, 157, 157
Decimal	13606301
CIE Lab	69.34, 18.59, 7.23
CIE LCh	69, 19.948, 21.242
Yxy	39.8137, 0.3627, 0.3291
Android (android.graphics.Color)	4291796381 (0xFFCF9D9D)
YUV	171.9500, -7.3703, 30.7389
Hunter-Lab	63.0981, 13.6974, 9.1474

Details

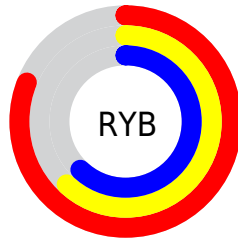
The Hex color **CF9D9D** is a light color, and the websafe version is hex **CC9999**. A complement of this color would be **9DCFCF**, and the grayscale version is **ACACAC**.

A 20% lighter version of the original color is **FFD4D4**, and **98696A** is the 20% darker color. If you saturate the color by 10%, you get **CF8888**, and if you desaturate by 10%, it is **CFB2B2**.

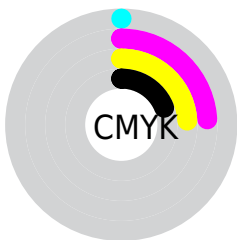
Distribution



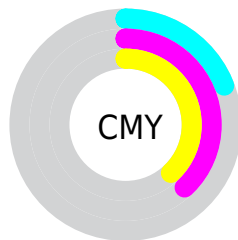
- Red (81%)
- Green (62%)
- Blue (62%)



- Red (81%)
- Yellow (62%)
- Blue (62%)



- Cyan (0%)
- Magenta (24%)
- Yellow (24%)
- Black (19%)



- Cyan (19%)
- Magenta (38%)
- Yellow (38%)

Brightness & Saturation Gradients

These gradients show how the Hex color CF9D9D changes by changing the brightness by 10 percent. The first figure shows a shift by +10% for each color and the second figure -10%.

Similar to the brightness gradients but the following saturation gradients show a change of the Hex color CF9D9D by changing the saturation by 10% instead.



CF9D9D



CF9D9D

FFFFFF



B38383



FFD4D4



98696A



FFF0F0



7D5152



633A3B



4A2325



320E10



1D0001



000000



CF9D9D



CF9D9D

 CF8888

 CFB2B2

 CF7474

 CFC6C6

 CF5F5F

 CFDBDB

 CF4A4A

 CFF0F0

 CF3636

 CFFFFFF

 CF2121

 CF0C0C

 CF0000

Harmonies

Analogous

The Analogous color harmony consists of three colors that are next to each other on the color wheel.



CA9DAF



CF9D9D



CAA18E

Triad

The Triadic color harmony groups three colors that are evenly spaced from another and form a triangle on the color wheel.



CF9D9D



95B192



8EADCD

Complementary

The Complementary color scheme is a pair of colors which are on the opposite of each other on the color wheel.



CF9D9D



9DCFCF

Split Complementary

Split-complementary colors differ from the complementary color scheme. The scheme consists of three colors, the original color and two neighbors of the complement color.



7CB1C5



CF9D9D



82B3A3

Square

The Square scheme is like the rectangle color scheme, but the four colors are evenly spaced on the color wheel.



CF9D9D



A9AC87



78B4B6



A6A6CB

Rectangle

The Rectangle color scheme consists of four colors that form a rectangle on the color wheel.



CF9D9D



C2A488



78B4B6



87AECB

Sweetspot

The Sweet Spot groups the original color and five complimentary colors.



CF9D9D



FFEDED



CF9DCF



807575



000000



808080

Same Dimension

The Same Dimension uses a secret algorithm to generate beautiful new colors.



CF9D9D



FFB5B5



CFB69D



695E5E



A80000



290000

Inverse Universe

The Inverse Universe completely reimagines the original color for something new.



9DCFCF



B5FFFF



9DB6CF



5E6969



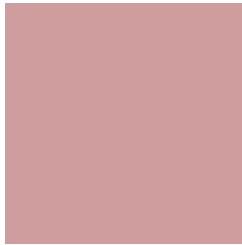
00A8A8



002929

Previews

White Background



This preview shows how the Hex color CF9D9D looks on a white background.

Color Contrast Check

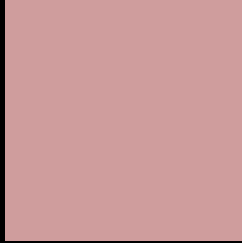
Large Text (above 18pt) WCAG AA × Fail

Any Text WCAG AA × Fail

Large Text (above 18pt) WCAG AAA × Fail

Any Text WCAG AAA × Fail

Black Background



This preview shows how the Hex color CF9D9D looks on a black background.

Color Contrast Check

Large Text (above 18pt) WCAG AA ✓ Pass

Any Text WCAG AA ✓ Pass

Large Text (above 18pt) WCAG AAA ✓ Pass

Any Text WCAG AAA ✓ Pass

If you want to check with other color combinations, try the [Color Contrast Checker](#).

Hex CF9D9D Background



This preview shows how black text looks on a background with the Hex color CF9D9D.



This preview shows how white text looks on a background with the Hex color CF9D9D.

Color Blindness Simulation

Color vision deficiency is a very complex topic, and I could not describe the different causes any better than Wikipedia does, so if you want to learn more, you should check out their [article about color blindness](#).

Dichromacy



Original Color
CF9D9D

Protanopia
AEA9A3

Deuteranopia
BFA49C



Tritanopia
D09BA7

Trichromacy



Original Color
CF9D9D

Protanomaly
BAA5A1

Deuteranomaly
C5A19C

Tritanomaly
D09CA3

Monochromacy



Original Color
CF9D9D

Achromatopsia
ACACAC

Achromatomaly
B9A7A7

CSS Examples

Text

The CSS property to change the color of the text to Hex CF9D9D is called "color". The color property can be set on classes, ids or directly on the HTML element.

This example shows how text in the color #CF9D9D looks like.

```
.text, #text, p{  
    color:#CF9D9D  
}
```

If you want to add a text shadow in that color use the text-shadow property, you can generate a text shadow directly with our [CSS Text Shadow Generator](#).

Here you see how black text with a 4 pixel #CF9D9D colored shadow looks like.

```
.shadow{ text-shadow: 4px 4px 2px #CF9D9D
}
```

Border

The CSS property to change the border of an element to Hex CF9D9D is called "border". The border property can be set on classes, ids or directly on the HTML element.

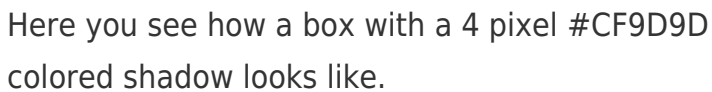
This example shows the color as border, it can be applied via the CSS property "border" or "border-color".

```
.border, #border, table{ border:4px solid
#CF9D9D }
```

If only the border color should be changed use the property `border-color`.

```
.border{ border-color:#CF9D9D }
```

If you want to add a box shadow in that color use:



Here you see how a box with a 4 pixel #CF9D9D colored shadow looks like.

```
.boxshadow{ -moz-box-shadow:4px 4px 4px  
4px #CF9D9D; -webkit-box-shadow:4px 4px  
4px 4px #CF9D9D; box-shadow:4px 4px 4px  
4px #CF9D9D }
```

Background

The CSS property to change the background color of an element to Hex CF9D9D is called "background". The background property can be set on classes, ids or directly on the HTML element.

```
.background, #background, body{  
background:#CF9D9D }
```

If only the background color should be changed can be used:

```
.background{ background-color:#CF9D9D }
```

This example shows the color as background, it is applied via the CSS property "background".

To optimize and compress your CSS code, you can use our [online CSS compressor and optimizer](#) based on csstidy. If you want to create a linear or radial gradient as background or border, check our [CSS Gradient Generator](#).

Hey! You found this booklet interesting? Support Converting Colors with the new Membership Option!

The pro membership hides all ads, plus gives you double the colors in the color bucket, and more awesome pro features!

[Learn more, Memberships starting at \\$2.50/m!](#)

**Follow me
on Twitter!**

@ConvertingColor