

Converting Colors

Hex(CFA2A4)

Have a look what the booklet for
Hex(CFA2A4) contains.

Hex(CFA2A4)	3
<i>Conversions</i>	4
<i>Details</i>	6
<i>Harmonies</i>	11
<i>Previews</i>	23
<i>Color Blindness Simulation</i>	26
<i>CSS Examples</i>	29

Color

Hex(CFA2A4)

Conversions

Conversions Part 1

Format	Color
Hex	CFA2A4
RGB	207, 162, 164
RGB Percent	81%, 64%, 64%
CMY	0.1882, 0.3647, 0.3569
CMYK	0.00, 0.22, 0.21, 0.19
HSL	357°, 32%, 72%
HSV	357°, 22%, 81%
XYZ	45.3533, 41.7864, 40.7972
YIQ	175.6830, 26.1780, 10.1620

Conversions

Conversions Part 2

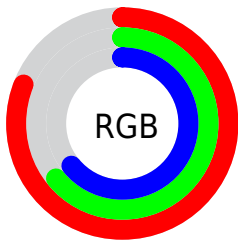
Format	Color
R _Y B	207, 162, 164
Decimal	13607588
CIE Lab	70.72, 16.91, 5.34
CIE LCh	71, 17.730, 17.522
Yxy	41.7864, 0.3545, 0.3266
Android (android.graphics.Color)	4291797668 (0xFFCFA2A4)
YUV	175.6830, -5.7597, 27.4650
Hunter-Lab	64.6424, 12.1119, 7.8305

Details

The Hex color **CFA2A4** is a light color, and the websafe version is hex **CC9999**. A complement of this color would be **A2CFCD**, and the grayscale version is **B0B0B0**.

A 20% lighter version of the original color is **FFD9DB**, and **986E70** is the 20% darker color. If you saturate the color by 10%, you get **CF8D90**, and if you desaturate by 10%, it is **CFB7B8**.

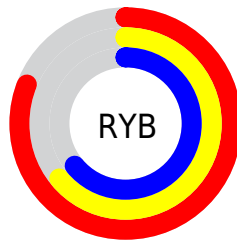
Distribution



Red (81%)

Green (64%)

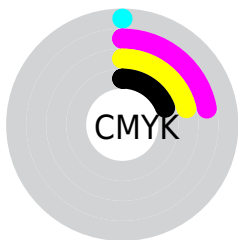
Blue (64%)



Red (81%)

Yellow (64%)

Blue (64%)

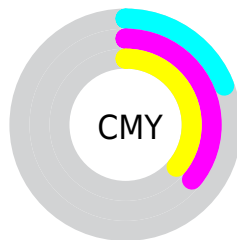


Cyan (0%)

Magenta (22%)

Yellow (21%)

Black (19%)



Cyan (19%)

Magenta (36%)

Yellow (36%)

Brightness & Saturation Gradients

These gradients show how the Hex color CFA2A4 changes by changing the brightness by 10 percent. The first figure shows a shift by +10% for each color and the second figure -10%.

Similar to the brightness gradients but the following saturation gradients show a change of the Hex color CFA2A4 by changing the saturation by 10% instead.



CFA2A4



CFA2A4

FFFFFF



B3888A



FFD9DB



986E70



FFF6F7



7D5658



643E41



4B282B



331316



200000



000000



CFA2A4



CFA2A4

 CF8D90

 CFB7B8

 CF797C

 CFCBCC

 CF6469

 CFE0DF

 CF4F55

 CFF5F3

 CF3B41

 CFFFFFF

 CF262D

 CF111A

 CF0009

Harmonies

Analogous

The Analogous color harmony consists of three colors that are next to each other on the color wheel.



C9A2B4



CFA2A4



CBA596

Triad

The Triadic color harmony groups three colors that are evenly spaced from another and form a triangle on the color wheel.



CFA2A4



9DB397



93B1CC

Complementary

The Complementary color scheme is a pair of colors which are on the opposite of each other on the color wheel.



CFA2A4



A2CFCD

Split Complementary

Split-complementary colors differ from the complementary color scheme. The scheme consists of three colors, the original color and two neighbors of the complement color.



85B4C4



CFA2A4



8CB6A6

Square

The Square scheme is like the rectangle color scheme, but the four colors are evenly spaced on the color wheel.



CFA2A4



B0AF8E



83B6B6



A7ABCC

Rectangle

The Rectangle color scheme consists of four colors that form a rectangle on the color wheel.



CFA2A4



C5A890



83B6B6



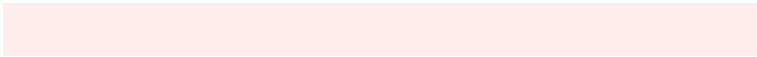
8DB2CA

Sweetspot

The Sweet Spot groups the original color and five complimentary colors.



CFA2A4



FFEDEE



CDA2CF



807576



000000



808080

Same Dimension

The Same Dimension uses a secret algorithm to generate beautiful new colors.



CFA2A4



FFBDC0



CFB6A2



695E5F



A80007



290002

Inverse Universe

The Inverse Universe completely reimagines the original color for something new.



CFA2A4



FFBDC0



A2BBCF



695E5F



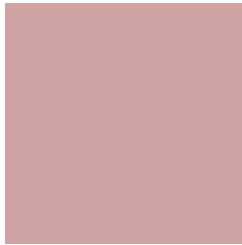
A80007



290002

Previews

White Background



This preview shows how the Hex color CFA2A4 looks on a white background.

Color Contrast Check

Large Text (above 18pt) WCAG AA × Fail

Any Text WCAG AA × Fail

Large Text (above 18pt) WCAG AAA × Fail

Any Text WCAG AAA × Fail

Black Background



Color Contrast Check

Large Text (above 18pt) WCAG AA ✓ Pass

Any Text WCAG AA ✓ Pass

Large Text (above 18pt) WCAG AAA ✓ Pass

Any Text WCAG AAA ✓ Pass

If you want to check with other color combinations, try the [Color Contrast Checker](#).

Hex CFA2A4 Background



This preview shows how black text looks on a background with the Hex color CFA2A4.



This preview shows how white text looks on a background with the Hex color CFA2A4.

Color Blindness Simulation

Color vision deficiency is a very complex topic, and I could not describe the different causes any better than Wikipedia does, so if you want to learn more, you should check out their [article about color blindness](#).

Dichromacy



Original Color
CFA2A4

Protanopia
B1ADAA

Deuteranopia
C2A7A3

Trichromacy



Original Color
CFA2A4

Protanomaly
BCA9A8

Deuteranomaly
C7A5A3

Tritanomaly
D0A1AA

Monochromacy



Original Color
CFA2A4

Achromatopsia
B0B0B0

Achromatomaly
BBABAC

CSS Examples

Text

The CSS property to change the color of the text to Hex CFA2A4 is called "color". The color property can be set on classes, ids or directly on the HTML element.

This example shows how text in the color #CFA2A4 looks like.

```
.text, #text, p{  
    color:#CFA2A4  
}
```

If you want to add a text shadow in that color use the text-shadow property, you can generate a text shadow directly with our [CSS Text Shadow Generator](#).

Here you see how black text with a 4 pixel #CFA2A4 colored shadow looks like.

```
.shadow{ text-shadow: 4px 4px 2px #CFA2A4 }  
}
```

Border

The CSS property to change the border of an element to Hex CFA2A4 is called "border". The border property can be set on classes, ids or directly on the HTML element.

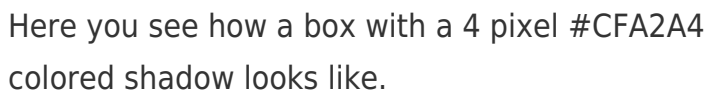
This example shows the color as border, it can be applied via the CSS property "border" or "border-color".

```
.border, #border, table{ border:4px solid #CFA2A4 }  
}
```

If only the border color should be changed use the property `border-color`.

```
.border{ border-color:#CFA2A4 }
```

If you want to add a box shadow in that color use:



Here you see how a box with a 4 pixel #CFA2A4 colored shadow looks like.

```
.boxshadow{ -moz-box-shadow:4px 4px 4px  
4px #CFA2A4; -webkit-box-shadow:4px 4px  
4px 4px #CFA2A4; box-shadow:4px 4px 4px  
4px #CFA2A4 }
```

Background

The CSS property to change the background color of an element to Hex CFA2A4 is called "background". The background property can be set on classes, ids or directly on the HTML element.

```
.background, #background, body{  
background:#CFA2A4 }
```

If only the background color should be changed can be used:

```
.background{ background-color:#CFA2A4 }
```

This example shows the color as background, it is applied via the CSS property "background".

To optimize and compress your CSS code, you can use our [online CSS compressor and optimizer](#) based on csstidy. If you want to create a linear or radial gradient as background or border, check our [CSS Gradient Generator](#).

Hey! You found this booklet interesting? Support Converting Colors with the new Membership Option!

The pro membership hides all ads, plus gives you double the colors in the color bucket, and more awesome pro features!

[Learn more, Memberships starting at \\$2.50/m!](#)

**Follow me
on Twitter!**

@ConvertingColor