

# Converting Colors

Hex(CFA8AA)

Have a look what the booklet for  
Hex(CFA8AA) contains.

<b>Hex(CFA8AA)</b> .....	3
<b><i>Conversions</i></b> .....	4
<b><i>Details</i></b> .....	6
<b><i>Harmonies</i></b> .....	11
<b><i>Previews</i></b> .....	23
<b><i>Color Blindness Simulation</i></b> .....	26
<b><i>CSS Examples</i></b> .....	29

# **Color**

**Hex(CFA8AA)**

# Conversions

## Conversions Part 1

Format	Color
Hex	CFA8AA
RGB	207, 168, 170
RGB Percent	81%, 66%, 67%
CMY	0.1882, 0.3412, 0.3333
CMYK	0.00, 0.19, 0.18, 0.19
HSL	357°, 29%, 74%
HSV	357°, 19%, 81%
XYZ	46.9905, 44.1729, 44.0798
YIQ	179.8890, 22.6020, 8.8900

# Conversions

## Conversions Part 2

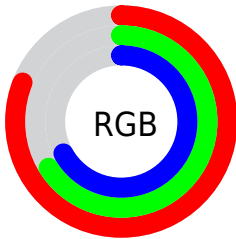
<b>Format</b>	<b>Color</b>
<b>R<sub>YB</sub></b>	207, 168, 170
Decimal	13609130
CIE <sub>Lab</sub>	72.34, 14.57, 4.36
CIE <sub>LCh</sub>	72, 15.208, 16.677
Yxy	44.1729, 0.3475, 0.3266
Android (android.graphics.Color)	4291799210 (0xFFCFA8AA)
YUV	179.8890, -4.8753, 23.7763
Hunter-Lab	66.4627, 9.8932, 7.2013

# Details

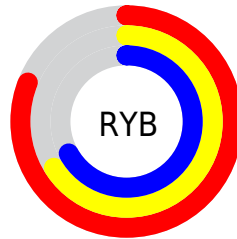
The Hex color **CFA8AA** is a light color, and the websafe version is hex **CC9999**. A complement of this color would be **A8CFCD**, and the grayscale version is **B4B4B4**.

A 20% lighter version of the original color is **FFDFE1**, and **987476** is the 20% darker color. If you saturate the color by 10%, you get **CF9396**, and if you desaturate by 10%, it is **CFBDBE**.

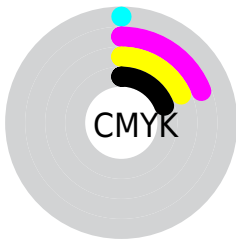
# Distribution



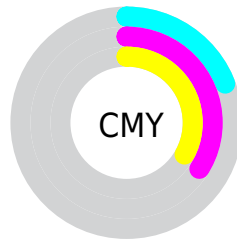
- Red (81%)
- Green (66%)
- Blue (67%)



- Red (81%)
- Yellow (66%)
- Blue (67%)



- Cyan (0%)
- Magenta (19%)
- Yellow (18%)
- Black (19%)



- Cyan (19%)
- Magenta (34%)
- Yellow (33%)

# Brightness & Saturation Gradients

These gradients show how the Hex color CFA8AA changes by changing the brightness by 10 percent. The first figure shows a shift by +10% for each color and the second figure -10%.

Similar to the brightness gradients but the following saturation gradients show a change of the Hex color CFA8AA by changing the saturation by 10% instead.



 CFA8AA

 CFA8AA

FFFFFF

 B38E90

 FFDFE1

 987476

 FFFCFE

 7E5B5D

 644346

 4C2D2F

 34181B

 210000

 000000

 CFA8AA

 CFA8AA

 CF9396

 CFBDBE

 CF7F83

 CFD1D1

 CF6A6F

 CFE6E5

 CF555B

 CFFBF9

 CF4048

 CFFFFFF

 CF2C34

 CF1721

 CF020D

 CF000B

# Harmonies

## Analogous

The Analogous color harmony consists of three colors that are next to each other on the color wheel.



CAA8B8



CFA8AA



CCA9E

# Triad

The Triadic color harmony groups three colors that are evenly spaced from another and form a triangle on the color wheel.



CFA8AA



A4B79E



9BB5CC

# Complementary

The Complementary color scheme is a pair of colors which are on the opposite of each other on the color wheel.



CFA8AA



A8CFCD

# Split Complementary

Split-complementary colors differ from the complementary color scheme. The scheme consists of three colors, the original color and two neighbors of the complement color.



8FB8C5



CFA8AA



96B9AB

# Square

The Square scheme is like the rectangle color scheme, but the four colors are evenly spaced on the color wheel.



CFA8AA



B4B397



8EBAB9



ACB0CC

# Rectangle

The Rectangle color scheme consists of four colors that form a rectangle on the color wheel.



CFA8AA



C6AD98



8EBAB9



96B6CA

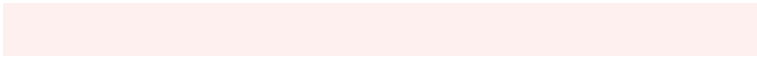


# Sweetspot

The Sweet Spot groups the original color and five complimentary colors.



CFA8AA



FFF0F0



CCA8CF



807777



000000



808080



# Same Dimension

The Same Dimension uses a secret algorithm to generate beautiful new colors.



CFA8AA



FFC4C7



CFB9A8



695E5F



A80009



290002



# Inverse Universe

The Inverse Universe completely reimagines the original color for something new.



CFA8AA



FFC4C7



A8BECF



695E5F



A80009

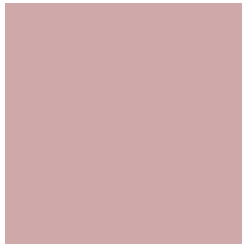


290002



# Previews

## White Background



This preview shows how the Hex color CFA8AA looks on a white background.

## Color Contrast Check

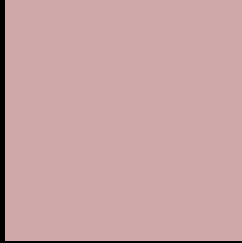
Large Text (above 18pt) WCAG AA × Fail

Any Text WCAG AA × Fail

Large Text (above 18pt) WCAG AAA × Fail

Any Text WCAG AAA × Fail

# Black Background



This preview shows how the Hex color CFA8AA looks on a black background.

## Color Contrast Check

Large Text (above 18pt) WCAG AA ✓ Pass

Any Text WCAG AA ✓ Pass

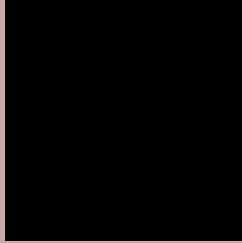
Large Text (above 18pt) WCAG AAA ✓ Pass

Any Text WCAG AAA ✓ Pass

If you want to check with other color combinations, try the [Color Contrast Checker](#).



## Hex CFA8AA Background



This preview shows how black text looks on a background with the Hex color CFA8AA.

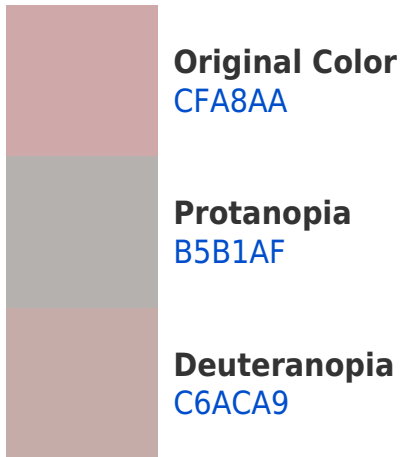


This preview shows how white text looks on a background with the Hex color CFA8AA.

# Color Blindness Simulation

Color vision deficiency is a very complex topic, and I could not describe the different causes any better than Wikipedia does, so if you want to learn more, you should check out their [article about color blindness](#).

## Dichromacy





**Tritanopia**  
D0A7B3

# Trichromacy



**Original Color**  
CFA8AA

**Protanomaly**  
BEAEAD

**Deuteranomaly**  
C9ABA9

**Tritanomaly**  
D0A7B0

# Monochromacy



**Original Color**  
CFA8AA

**Achromatopsia**  
B4B4B4

**Achromatomaly**  
BEB0B0

# CSS Examples

## Text

The CSS property to change the color of the text to Hex CFA8AA is called "color". The color property can be set on classes, ids or directly on the HTML element.

This example shows how text in the color #CFA8AA looks like.

```
.text, #text, p{  
    color:#CFA8AA  
}
```

If you want to add a text shadow in that color use the text-shadow property, you can generate a text shadow directly with our [CSS Text Shadow Generator](#).

Here you see how black text with a 4 pixel #CFA8AA colored shadow looks like.

```
.shadow{ text-shadow: 4px 4px 2px #CFA8AA }  
}
```

## Border

The CSS property to change the border of an element to Hex CFA8AA is called "border". The border property can be set on classes, ids or directly on the HTML element.

This example shows the color as border, it can be applied via the CSS property "border" or "border-color".

```
.border, #border, table{ border:4px solid #CFA8AA }  
}
```

If only the border color should be changed use the property `border-color`.

```
.border{ border-color:#CFA8AA }
```

If you want to add a box shadow in that color use:

Here you see how a box with a 4 pixel #CFA8AA colored shadow looks like.

```
.boxshadow{ -moz-box-shadow:4px 4px 4px  
4px #CFA8AA; -webkit-box-shadow:4px 4px  
4px 4px #CFA8AA; box-shadow:4px 4px 4px  
4px #CFA8AA }
```

# Background

The CSS property to change the background color of an element to Hex CFA8AA is called "background". The background property can be set on classes, ids or directly on the HTML element.

```
.background, #background, body{  
background:#CFA8AA }
```

If only the background color should be changed can be used:

```
.background{ background-color:#CFA8AA }
```

This example shows the color as background, it is applied via the CSS property "background".

To optimize and compress your CSS code, you can use our [online CSS compressor and optimizer](#) based on csstidy. If you want to create a linear or radial gradient as background or border, check our [CSS Gradient Generator](#).



Hey! You found this booklet interesting? Support Converting Colors with the new Membership Option!

The pro membership hides all ads, plus gives you double the colors in the color bucket, and more awesome pro features!

**[Learn more, Memberships starting at \\$2.50/m!](#)**

**Follow me  
on Twitter!**

@ConvertingColor