

# Converting Colors

Hex(CFB3B7)

Have a look what the booklet for  
Hex(CFB3B7) contains.

<b>Hex(CFB3B7)</b> .....	3
<i><b>Conversions</b></i> .....	4
<i><b>Details</b></i> .....	6
<i><b>Harmonies</b></i> .....	11
<i><b>Previews</b></i> .....	23
<i><b>Color Blindness Simulation</b></i> .....	26
<i><b>CSS Examples</b></i> .....	29

# **Color**

**Hex(CFB3B7)**

# Conversions

## Conversions Part 1

Format	Color
Hex	CFB3B7
RGB	207, 179, 183
RGB Percent	81%, 70%, 72%
CMY	0.1882, 0.2980, 0.2824
CMYK	0.00, 0.14, 0.12, 0.19
HSL	351°, 23%, 76%
HSV	351°, 14%, 81%
XYZ	50.3995, 48.9245, 51.5868
YIQ	187.8280, 15.4040, 7.1800

# Conversions

## Conversions Part 2

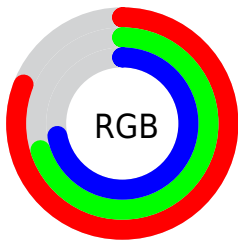
Format	Color
RYP	207, 179, 183
Decimal	13611959
CIELab	75.40, 10.72, 1.68
CIElCh	75, 10.846, 8.901
Yxy	48.9245, 0.3340, 0.3242
Android (android.graphics.Color)	4291802039 (0xFFCFB3B7)
YUV	187.8280, -2.3802, 16.8138
Hunter-Lab	69.9460, 6.2122, 5.2345

# Details

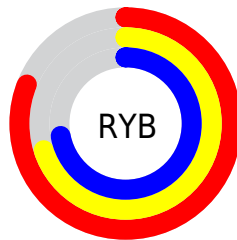
The Hex color **CFB3B7** is a light color, and the websafe version is hex **CC9999**. A complement of this color would be **B3CFCB**, and the grayscale version is **BCBCBC**.

A 20% lighter version of the original color is **FFEBEF**, and **987E82** is the 20% darker color. If you saturate the color by 10%, you get **CF9EA5**, and if you desaturate by 10%, it is **CFC8C9**.

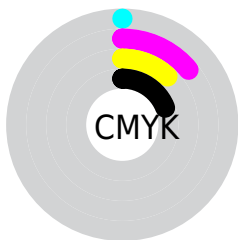
# Distribution



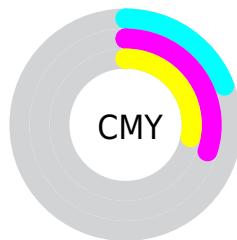
- Red (81%)
- Green (70%)
- Blue (72%)



- Red (81%)
- Yellow (70%)
- Blue (72%)



- Cyan (0%)
- Magenta (14%)
- Yellow (12%)
- Black (19%)



- Cyan (19%)
- Magenta (30%)
- Yellow (28%)

# Brightness & Saturation Gradients

These gradients show how the Hex color CFB3B7 changes by changing the brightness by 10 percent. The first figure shows a shift by +10% for each color and the second figure -10%.

Similar to the brightness gradients but the following saturation gradients show a change of the Hex color CFB3B7 by changing the saturation by 10% instead.



 CFB3B7

 CFB3B7

FFFFFF

 B3989C

 FFEBEF

 987E82

 7E6569

 654D51

 4D363A

 362124

 210B0F

 000000

 CFB3B7

 CFB3B7

 CF9EA5

 CFC8C9

 CF8A94

 CFDCDA

 CF7582

 CFF1EC

 CF6070

 CFFFFE

 CF4B5E

 CFFFFFF

 CF374D

 CF223B

 CF0D29

 CF001E

# Harmonies

## Analogous

The Analogous color harmony consists of three colors that are next to each other on the color wheel.



CAB4C1



CFB3B7



CFB4AE

# Triad

The Triadic color harmony groups three colors that are evenly spaced from another and form a triangle on the color wheel.



CFB3B7



B3BDAA



A8BDCC

# Complementary

The Complementary color scheme is a pair of colors which are on the opposite of each other on the color wheel.



CFB3B7



B3CFCB

# Split Complementary

Split-complementary colors differ from the complementary color scheme. The scheme consists of three colors, the original color and two neighbors of the complement color.



A1BFC6



CFB3B7



A9BFB2

# Square

The Square scheme is like the rectangle color scheme, but the four colors are evenly spaced on the color wheel.



CFB3B7



BFBA06



A2C0BC



B3BACD

# Rectangle

The Rectangle color scheme consists of four colors that form a rectangle on the color wheel.



CFB3B7



CBB6A9



A2C0BC



A5BECA



# Sweetspot

The Sweet Spot groups the original color and five complimentary colors.



CFB3B7



FFF5F6



CBB3CF



80797A



000000



808080



# Same Dimension

The Same Dimension uses a secret algorithm to generate beautiful new colors.



CFB3B7



FFD6DC



CFBDB3



695E60



A80018



290006



# Inverse Universe

The Inverse Universe completely reimagines the original color for something new.



CFB3B7



FFD6DC



B3C5CF



695E60



A80018

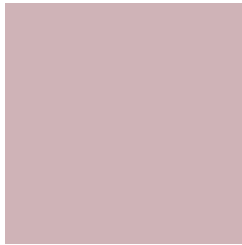


290006



# Previews

## White Background



This preview shows how the Hex color CFB3B7 looks on a white background.

## Color Contrast Check

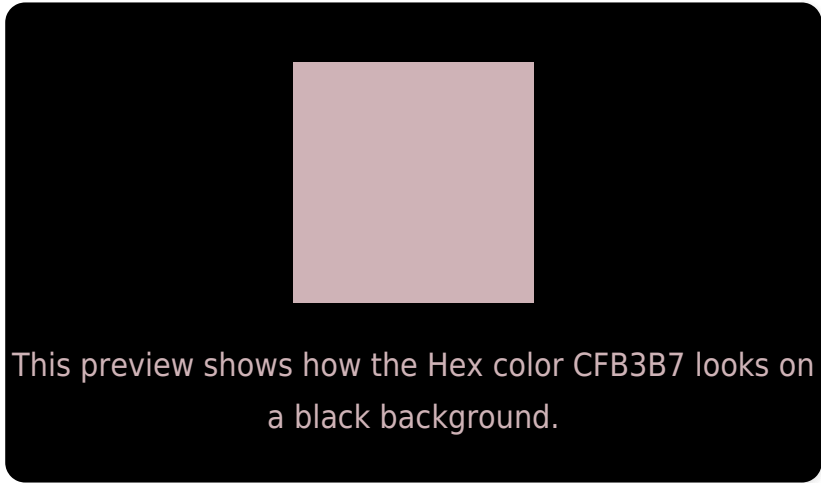
Large Text (above 18pt) WCAG AA × Fail

Any Text WCAG AA × Fail

Large Text (above 18pt) WCAG AAA × Fail

Any Text WCAG AAA × Fail

# Black Background



## Color Contrast Check

Large Text (above 18pt) WCAG AA ✓ Pass

Any Text WCAG AA ✓ Pass

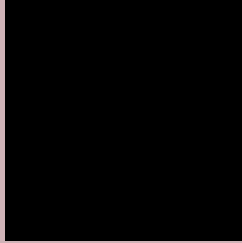
Large Text (above 18pt) WCAG AAA ✓ Pass

Any Text WCAG AAA ✓ Pass

If you want to check with other color combinations, try the [Color Contrast Checker](#).



## Hex CFB3B7 Background



This preview shows how black text looks on a background with the Hex color CFB3B7.



This preview shows how white text looks on a background with the Hex color CFB3B7.

# Color Blindness Simulation

Color vision deficiency is a very complex topic, and I could not describe the different causes any better than Wikipedia does, so if you want to learn more, you should check out their [article about color blindness](#).

## Dichromacy





**Tritanopia**  
D0B2C0

# Trichromacy



**Original Color**  
CFB3B7

**Protanomaly**  
C4B7B9

**Deuteranomaly**  
CEB4B7

**Tritanomaly**  
D0B2BD

# Monochromacy



**Original Color**  
CFB3B7

**Achromatopsia**  
BCBCBC

**Achromatomaly**  
C3B9BA

# CSS Examples

## Text

The CSS property to change the color of the text to Hex CFB3B7 is called "color". The color property can be set on classes, ids or directly on the HTML element.

This example shows how text in the color #CFB3B7 looks like.

```
.text, #text, p{  
    color:#CFB3B7  
}
```

If you want to add a text shadow in that color use the text-shadow property, you can generate a text shadow directly with our [CSS Text Shadow Generator](#).

Here you see how black text with a 4 pixel #CFB3B7 colored shadow looks like.

```
.shadow{ text-shadow: 4px 4px 2px #CFB3B7
}
```

## Border

The CSS property to change the border of an element to Hex CFB3B7 is called "border". The border property can be set on classes, ids or directly on the HTML element.

This example shows the color as border, it can be applied via the CSS property "border" or "border-color".

```
.border, #border, table{ border:4px solid
#CFB3B7 }
```

If only the border color should be changed use the property `border-color`.

```
.border{ border-color:#CFB3B7 }
```

If you want to add a box shadow in that color use:

Here you see how a box with a 4 pixel #CFB3B7 colored shadow looks like.

```
.boxshadow{ -moz-box-shadow:4px 4px 4px  
4px #CFB3B7; -webkit-box-shadow:4px 4px  
4px 4px #CFB3B7; box-shadow:4px 4px 4px  
4px #CFB3B7 }
```

# Background

The CSS property to change the background color of an element to Hex CFB3B7 is called "background". The background property can be set on classes, ids or directly on the HTML element.

```
.background, #background, body{  
background:#CFB3B7 }
```

If only the background color should be changed can be used:

```
.background{ background-color:#CFB3B7 }
```

This example shows the color as background, it is applied via the CSS property "background".

To optimize and compress your CSS code, you can use our [online CSS compressor and optimizer](#) based on csstidy. If you want to create a linear or radial gradient as background or border, check our [CSS Gradient Generator](#).



Hey! You found this booklet interesting? Support Converting Colors with the new Membership Option!

The pro membership hides all ads, plus gives you double the colors in the color bucket, and more awesome pro features!

**[Learn more, Memberships starting at \\$2.50/m!](#)**

**Follow me  
on Twitter!**

@ConvertingColor