

Converting Colors

Hex(CFB597)

Have a look what the booklet for
Hex(CFB597) contains.

Hex(CFB597)	3
<i>Conversions</i>	4
<i>Details</i>	6
<i>Harmonies</i>	11
<i>Previews</i>	23
<i>Color Blindness Simulation</i>	26
<i>CSS Examples</i>	29

Color

Hex(CFB597)

Conversions

Conversions Part 1

Format	Color
Hex	CFB597
RGB	207, 181, 151
RGB Percent	81%, 71%, 59%
CMY	0.1882, 0.2902, 0.4078
CMYK	0.00, 0.13, 0.27, 0.19
HSL	32°, 37%, 70%
HSV	32°, 27%, 81%
XYZ	47.8419, 48.5475, 36.1272
YIQ	185.3540, 25.1260, -3.8180

Conversions

Conversions Part 2

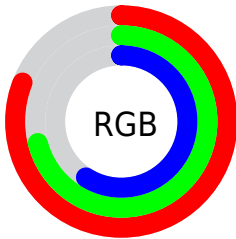
Format	Color
R_{YB}	200, 207, 151
Decimal	13612439
CIE Lab	75.17, 4.76, 18.73
CIE LCh	75, 19.325, 75.726
Yxy	48.5475, 0.3610, 0.3664
Android (android.graphics.Color)	4291802519 (0xFFCFB597)
YUV	185.3540, -16.9365, 18.9835
Hunter-Lab	69.6760, 0.6310, 18.0312

Details

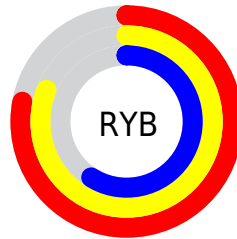
The Hex color **CFB597** is a light color, and the websafe version is hex **CCCC99**. A complement of this color would be **97B1CF**, and the grayscale version is **BABABA**.

A 20% lighter version of the original color is **FFEDCD**, and **988064** is the 20% darker color. If you saturate the color by 10%, you get **CFAB82**, and if you desaturate by 10%, it is **CFBFAC**.

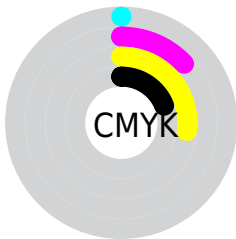
Distribution



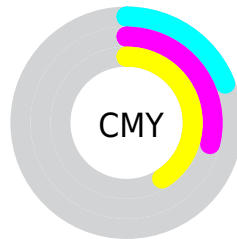
- Red (81%)
- Green (71%)
- Blue (59%)



- Red (78%)
- Yellow (81%)
- Blue (59%)



- Cyan (0%)
- Magenta (13%)
- Yellow (27%)
- Black (19%)



- Cyan (19%)
- Magenta (29%)
- Yellow (41%)

Brightness & Saturation Gradients

These gradients show how the Hex color CFB597 changes by changing the brightness by 10 percent. The first figure shows a shift by +10% for each color and the second figure -10%.

Similar to the brightness gradients but the following saturation gradients show a change of the Hex color CFB597 by changing the saturation by 10% instead.



CFB597



CFB597

FFFFFF



B39A7D



FFEDCD



988064



FFFEEA



7E674C



644F35



4B381F



342309



1D0E00



000000



CFB597



CFB597

 CFAB82

 CFBFAC

 CFA26E

 CFC8C0

 CF9859

 CFD2D5

 CF8F44

 CFDBEA

 CF852F

 CFE5FF

 CF7B1B

 CFEFFF

 CF7206

 CFF8FF

 CF6F00

 CFFFFFF

Harmonies

Analogous

The Analogous color harmony consists of three colors that are next to each other on the color wheel.



DBB0A0



CFB597



BDBB97

Triad

The Triadic color harmony groups three colors that are evenly spaced from another and form a triangle on the color wheel.



CFB597



8AC3C2



C8B2D2

Complementary

The Complementary color scheme is a pair of colors which are on the opposite of each other on the color wheel.



CFB597



97B1CF

Split Complementary

Split-complementary colors differ from the complementary color scheme. The scheme consists of three colors, the original color and two neighbors of the complement color.



B1B7DB



CFB597



8CC1D2

Square

The Square scheme is like the rectangle color scheme, but the four colors are evenly spaced on the color wheel.



CFB597



96C3B0



9BBDDB



D8ADC2

Rectangle

The Rectangle color scheme consists of four colors that form a rectangle on the color wheel.



CFB597



B0BE9C



9BBDD8



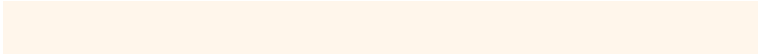
C1B3D6

Sweetspot

The Sweet Spot groups the original color and five complimentary colors.



CFB597



FFF6EB



CF97B1



807A73



000000



808080

Same Dimension

The Same Dimension uses a secret algorithm to generate beautiful new colors.



CFB597



FFD9AD



CDCF97



69645E



A85A00



291600

Inverse Universe

The Inverse Universe completely reimagines the original color for something new.



97B1CF



ADD3FF



9997CF



5E6369



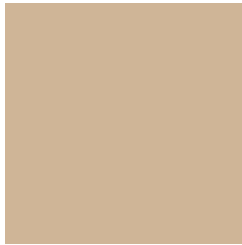
004EA8



001329

Previews

White Background



This preview shows how the Hex color CFB597 looks on a white background.

Color Contrast Check

Large Text (above 18pt) WCAG AA × Fail

Any Text WCAG AA × Fail

Large Text (above 18pt) WCAG AAA × Fail

Any Text WCAG AAA × Fail

Black Background



Color Contrast Check

Large Text (above 18pt) WCAG AA ✓ Pass

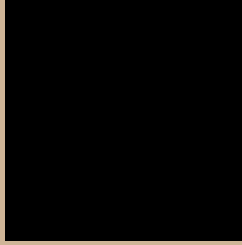
Any Text WCAG AA ✓ Pass

Large Text (above 18pt) WCAG AAA ✓ Pass

Any Text WCAG AAA ✓ Pass

If you want to check with other color combinations, try the [Color Contrast Checker](#).

Hex CFB597 Background



This preview shows how black text looks on a background with the Hex color CFB597.



This preview shows how white text looks on a background with the Hex color CFB597.

Color Blindness Simulation

Color vision deficiency is a very complex topic, and I could not describe the different causes any better than Wikipedia does, so if you want to learn more, you should check out their [article about color blindness](#).


Dichromacy



Original Color
CFB597

Protanopia
C4B999

Deuteranopia
D7B298

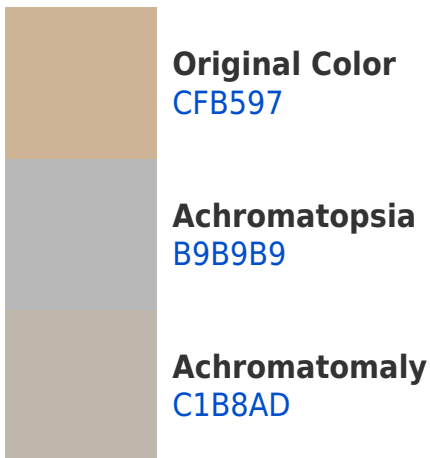


Tritanopia
D3B0BD

Trichromacy



Monochromacy



CSS Examples

Text

The CSS property to change the color of the text to Hex CFB597 is called "color". The color property can be set on classes, ids or directly on the HTML element.

This example shows how text in the color #CFB597 looks like.

```
.text, #text, p{  
    color:#CFB597  
}
```

If you want to add a text shadow in that color use the text-shadow property, you can generate a text shadow directly with our [CSS Text Shadow Generator](#).

Here you see how black text with a 4 pixel #CFB597 colored shadow looks like.

```
.shadow{ text-shadow: 4px 4px 2px #CFB597
}
```

Border

The CSS property to change the border of an element to Hex CFB597 is called "border". The border property can be set on classes, ids or directly on the HTML element.

This example shows the color as border, it can be applied via the CSS property "border" or "border-color".

```
.border, #border, table{ border:4px solid
#CFB597 }
```

If only the border color should be changed use the property `border-color`.

```
.border{ border-color:#CFB597 }
```

If you want to add a box shadow in that color use:

Here you see how a box with a 4 pixel #CFB597 colored shadow looks like.

```
.boxshadow{ -moz-box-shadow:4px 4px 4px  
4px #CFB597; -webkit-box-shadow:4px 4px  
4px 4px #CFB597; box-shadow:4px 4px 4px  
4px #CFB597 }
```

Background

The CSS property to change the background color of an element to Hex CFB597 is called "background". The background property can be set on classes, ids or directly on the HTML element.

```
.background, #background, body{  
background:#CFB597 }
```

If only the background color should be changed can be used:

```
.background{ background-color:#CFB597 }
```

This example shows the color as background, it is applied via the CSS property "background".

To optimize and compress your CSS code, you can use our [online CSS compressor and optimizer](#) based on csstidy. If you want to create a linear or radial gradient as background or border, check our [CSS Gradient Generator](#).

Hey! You found this booklet interesting? Support Converting Colors with the new Membership Option!

The pro membership hides all ads, plus gives you double the colors in the color bucket, and more awesome pro features!

[Learn more, Memberships starting at \\$2.50/m!](#)

**Follow me
on Twitter!**

@ConvertingColor