

Converting Colors

Hex(CFB6B0)

Have a look what the booklet for
Hex(CFB6B0) contains.

Hex(CFB6B0)	3
<i>Conversions</i>	4
<i>Details</i>	6
<i>Harmonies</i>	11
<i>Previews</i>	23
<i>Color Blindness Simulation</i>	26
<i>CSS Examples</i>	29

Color

Hex(CFB6B0)

Conversions

Conversions Part 1

Format	Color
Hex	CFB6B0
RGB	207, 182, 176
RGB Percent	81%, 71%, 69%
CMY	0.1882, 0.2863, 0.3098
CMYK	0.00, 0.12, 0.15, 0.19
HSL	12°, 24%, 75%
HSV	12°, 15%, 81%
XYZ	50.2965, 49.8559, 48.0465
YIQ	188.7910, 16.8260, 3.4340

Conversions

Conversions Part 2

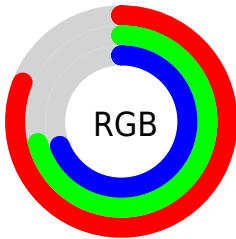
Format	Color
R _Y B	207, 183, 176
Decimal	13612720
CIE Lab	75.98, 7.96, 6.32
CIE LCh	76, 10.162, 38.481
Yxy	49.8559, 0.3394, 0.3364
Android (android.graphics.Color)	4291802800 (0xFFCFB6B0)
YUV	188.7910, -6.3060, 15.9693
Hunter-Lab	70.6087, 3.5853, 9.0815

Details

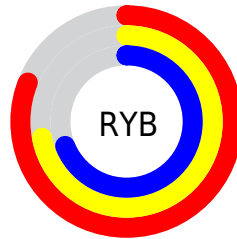
The Hex color **CFB6B0** is a light color, and the websafe version is hex **CCCCCC**. A complement of this color would be **B0C9CF**, and the grayscale version is **BDBDBD**.

A 20% lighter version of the original color is **FFEEE8**, and **98817C** is the 20% darker color. If you saturate the color by 10%, you get **CFA59B**, and if you desaturate by 10%, it is **CFC7C5**.

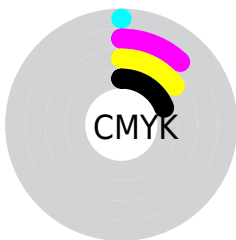
Distribution



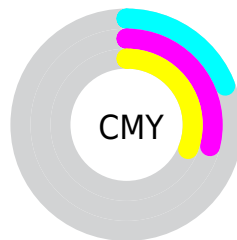
- Red (81%)
- Green (71%)
- Blue (69%)



- Red (81%)
- Yellow (72%)
- Blue (69%)



- Cyan (0%)
- Magenta (12%)
- Yellow (15%)
- Black (19%)



- Cyan (19%)
- Magenta (29%)
- Yellow (31%)

Brightness & Saturation Gradients

These gradients show how the Hex color CFB6B0 changes by changing the brightness by 10 percent. The first figure shows a shift by +10% for each color and the second figure -10%.

Similar to the brightness gradients but the following saturation gradients show a change of the Hex color CFB6B0 by changing the saturation by 10% instead.

 CFB6B0

 CFB6B0

FFFFFF

 B39B95

 FFEED8

 98817C

 7E6863

 65504B

 4D3934

 36231F

 210E07

 000000

 CFB6B0

 CFB6B0

 CFA59B

 CFC7C5

 CF9587

 CFD7D9

 CF8472

 CFE8EE

 CF735D

 CFF9FF

 CF6348

 CFFFFFF

 CF5234

 CF411F

 CF300A

 CF2800

Harmonies

Analogous

The Analogous color harmony consists of three colors that are next to each other on the color wheel.



CFB5B9



CFB6B0



CAB8AA

Triad

The Triadic color harmony groups three colors that are evenly spaced from another and form a triangle on the color wheel.



CFB6B0



ACC0B4



B5BBCE

Complementary

The Complementary color scheme is a pair of colors which are on the opposite of each other on the color wheel.



CFB6B0



B0C9CF

Split Complementary

Split-complementary colors differ from the complementary color scheme. The scheme consists of three colors, the original color and two neighbors of the complement color.



AABECC



CFB6B0



A5C1BE

Square

The Square scheme is like the rectangle color scheme, but the four colors are evenly spaced on the color wheel.



CFB6B0



B6BEAC



A5C0C7



C1B8CA

Rectangle

The Rectangle color scheme consists of four colors that form a rectangle on the color wheel.



CFB6B0



C4BAA9



A5C0C7



B1BCCE

Sweetspot

The Sweet Spot groups the original color and five complimentary colors.



CFB6B0



FFF7F5



CFB0C9



807A79



000000



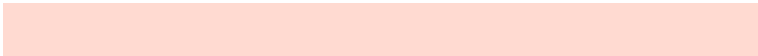
808080

Same Dimension

The Same Dimension uses a secret algorithm to generate beautiful new colors.



CFB6B0



FFDAD1



CFC5B0



69605E



A82100



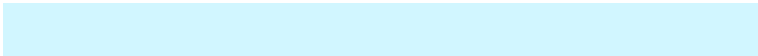
290800

Inverse Universe

The Inverse Universe completely reimagines the original color for something new.



B0C9CF



D1F6FF



B0BACF



5E6769



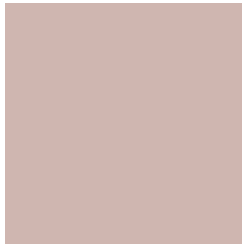
0088A8



002129

Previews

White Background



This preview shows how the Hex color CFB6B0 looks on a white background.

Color Contrast Check

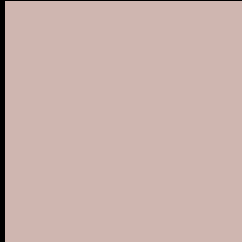
Large Text (above 18pt) WCAG AA × Fail

Any Text WCAG AA × Fail

Large Text (above 18pt) WCAG AAA × Fail

Any Text WCAG AAA × Fail

Black Background



This preview shows how the Hex color CFB6B0 looks on a black background.

Color Contrast Check

Large Text (above 18pt) WCAG AA ✓ Pass

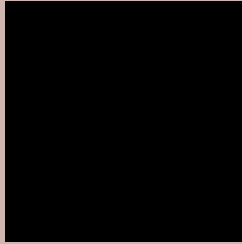
Any Text WCAG AA ✓ Pass

Large Text (above 18pt) WCAG AAA ✓ Pass

Any Text WCAG AAA ✓ Pass

If you want to check with other color combinations, try the [Color Contrast Checker](#).

Hex CFB6B0 Background



This preview shows how black text looks on a background with the Hex color CFB6B0.

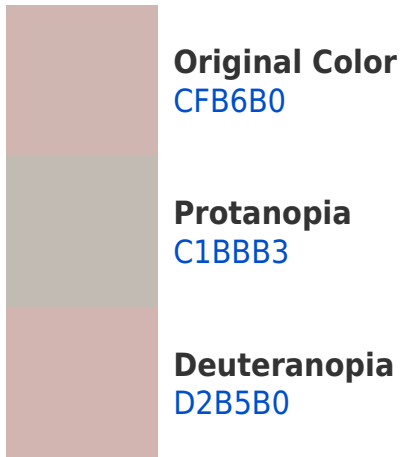


This preview shows how white text looks on a background with the Hex color CFB6B0.

Color Blindness Simulation

Color vision deficiency is a very complex topic, and I could not describe the different causes any better than Wikipedia does, so if you want to learn more, you should check out their [article about color blindness](#).

Dichromacy





Tritanopia
D1B3C1

Trichromacy



Original Color
CFB6B0

Protanomaly
C6B9B2

Deuteranomaly
D1B5B0

Tritanomaly
D0B4BB

Monochromacy



Original Color
CFB6B0

Achromatopsia
BDBDBD

Achromatomaly
C4BAB8

CSS Examples

Text

The CSS property to change the color of the text to Hex CFB6B0 is called "color". The color property can be set on classes, ids or directly on the HTML element.

This example shows how text in the color #CFB6B0 looks like.

```
.text, #text, p{  
    color:#CFB6B0  
}
```

If you want to add a text shadow in that color use the text-shadow property, you can generate a text shadow directly with our [CSS Text Shadow Generator](#).

Here you see how black text with a 4 pixel #CFB6B0 colored shadow looks like.

```
.shadow{ text-shadow: 4px 4px 2px #CFB6B0
}
```

Border

The CSS property to change the border of an element to Hex CFB6B0 is called "border". The border property can be set on classes, ids or directly on the HTML element.

This example shows the color as border, it can be applied via the CSS property "border" or "border-color".

```
.border, #border, table{ border:4px solid
#CFB6B0 }
```

If only the border color should be changed use the property `border-color`.

```
.border{ border-color:#CFB6B0 }
```

If you want to add a box shadow in that color use:

Here you see how a box with a 4 pixel #CFB6B0 colored shadow looks like.

```
.boxshadow{ -moz-box-shadow:4px 4px 4px  
4px #CFB6B0; -webkit-box-shadow:4px 4px  
4px 4px #CFB6B0; box-shadow:4px 4px 4px  
4px #CFB6B0 }
```

Background

The CSS property to change the background color of an element to Hex CFB6B0 is called "background". The background property can be set on classes, ids or directly on the HTML element.

```
.background, #background, body{  
background:#CFB6B0 }
```

If only the background color should be changed can be used:

```
.background{ background-color:#CFB6B0 }
```

This example shows the color as background, it is applied via the CSS property "background".

To optimize and compress your CSS code, you can use our [online CSS compressor and optimizer](#) based on csstidy. If you want to create a linear or radial gradient as background or border, check our [CSS Gradient Generator](#).

Hey! You found this booklet interesting? Support Converting Colors with the new Membership Option!

The pro membership hides all ads, plus gives you double the colors in the color bucket, and more awesome pro features!

[Learn more, Memberships starting at \\$2.50/m!](#)

**Follow me
on Twitter!**

@ConvertingColor