

Converting Colors

Hex(CFB6B4)

Have a look what the booklet for
Hex(CFB6B4) contains.

Hex(CFB6B4)	3
<i>Conversions</i>	4
<i>Details</i>	6
<i>Harmonies</i>	11
<i>Previews</i>	23
<i>Color Blindness Simulation</i>	26
<i>CSS Examples</i>	29

Color

Hex(CFB6B4)

Conversions

Conversions Part 1

Format	Color
Hex	CFB6B4
RGB	207, 182, 180
RGB Percent	81%, 71%, 71%
CMY	0.1882, 0.2863, 0.2941
CMYK	0.00, 0.12, 0.13, 0.19
HSL	4°, 22%, 76%
HSV	4°, 13%, 81%
XYZ	50.6983, 50.0166, 50.1621
YIQ	189.2470, 15.5420, 4.6780

Conversions

Conversions Part 2

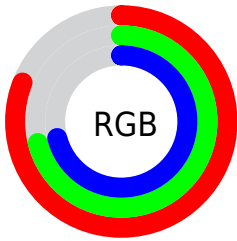
Format	Color
R_{YB}	207, 182, 180
Decimal	13612724
CIE Lab	76.08, 8.60, 4.29
CIE LCh	76, 9.614, 26.507
Yxy	50.0166, 0.3360, 0.3315
Android (android.graphics.Color)	4291802804 (0xFFCFB6B4)
YUV	189.2470, -4.5588, 15.5694
Hunter-Lab	70.7224, 4.1959, 7.4524

Details

The Hex color **CFB6B4** is a light color, and the websafe version is hex **CCCCCC**. A complement of this color would be **B4CDCF**, and the grayscale version is **BDBDBD**.

A 20% lighter version of the original color is **FFEEEC**, and **98817F** is the 20% darker color. If you saturate the color by 10%, you get **CFA39F**, and if you desaturate by 10%, it is **CFC9C9**.

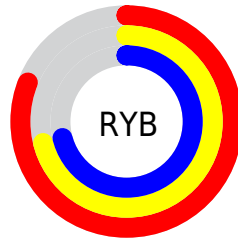
Distribution



Red (81%)

Green (71%)

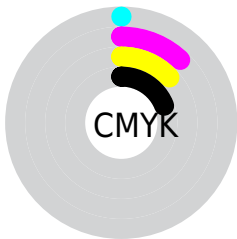
Blue (71%)



Red (81%)

Yellow (71%)

Blue (71%)

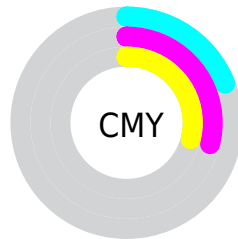


Cyan (0%)

Magenta (12%)

Yellow (13%)

Black (19%)



Cyan (19%)

Magenta (29%)

Yellow (29%)

Brightness & Saturation Gradients

These gradients show how the Hex color CFB6B4 changes by changing the brightness by 10 percent. The first figure shows a shift by +10% for each color and the second figure -10%.

Similar to the brightness gradients but the following saturation gradients show a change of the Hex color CFB6B4 by changing the saturation by 10% instead.

 CFB6B4

 CFB6B4

FFFFFF

 B39B99

 FFEEEC

 98817F

 7E6866

 65504E

 4D3938

 362322

 210E0C

 000000

 CFB6B4

 CFB6B4

 CFA39F

 CFC9C9

 CF908B

 CFDCDD

 CF7D76

 CFF0F2

 CF6961

 CFFFFFF

 CF564D

 CF4338

 CF3023

 CF1D0E

 CF0F00

Harmonies

Analogous

The Analogous color harmony consists of three colors that are next to each other on the color wheel.



CDB6BD



CFB6B4



CCB8AD

Triad

The Triadic color harmony groups three colors that are evenly spaced from another and form a triangle on the color wheel.



CFB6B4



B0C0B2



B1BDCD

Complementary

The Complementary color scheme is a pair of colors which are on the opposite of each other on the color wheel.



CFB6B4



B4CDCF

Split Complementary

Split-complementary colors differ from the complementary color scheme. The scheme consists of three colors, the original color and two neighbors of the complement color.



A9BFCA



CFB6B4



A8C1BA

Square

The Square scheme is like the rectangle color scheme, but the four colors are evenly spaced on the color wheel.



CFB6B4



BABDAC



A6C1C3



BCBACB

Rectangle

The Rectangle color scheme consists of four colors that form a rectangle on the color wheel.



CFB6B4



C7BAAB



A6C1C3



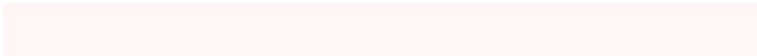
AEBECD

Sweetspot

The Sweet Spot groups the original color and five complimentary colors.



CFB6B4



FFF6F5



CFB4CD



807A79



000000



808080

Same Dimension

The Same Dimension uses a secret algorithm to generate beautiful new colors.



CFB6B4



FFD9D6



CFC3B4



695F5E



A80C00



290300

Inverse Universe

The Inverse Universe completely reimagines the original color for something new.



B4CDCF



D6FCFF



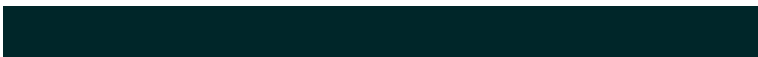
B4C0CF



5E6869



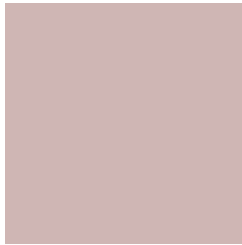
009CA8



002629

Previews

White Background



This preview shows how the Hex color CFB6B4 looks on a white background.

Color Contrast Check

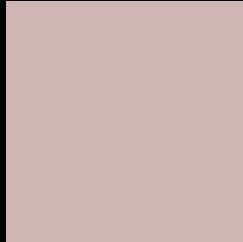
Large Text (above 18pt) WCAG AA × Fail

Any Text WCAG AA × Fail

Large Text (above 18pt) WCAG AAA × Fail

Any Text WCAG AAA × Fail

Black Background



This preview shows how the Hex color CFB6B4 looks on a black background.

Color Contrast Check

Large Text (above 18pt) WCAG AA ✓ Pass

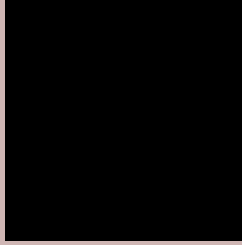
Any Text WCAG AA ✓ Pass

Large Text (above 18pt) WCAG AAA ✓ Pass

Any Text WCAG AAA ✓ Pass

If you want to check with other color combinations, try the [Color Contrast Checker](#).

Hex CFB6B4 Background



This preview shows how black text looks on a background with the Hex color CFB6B4.

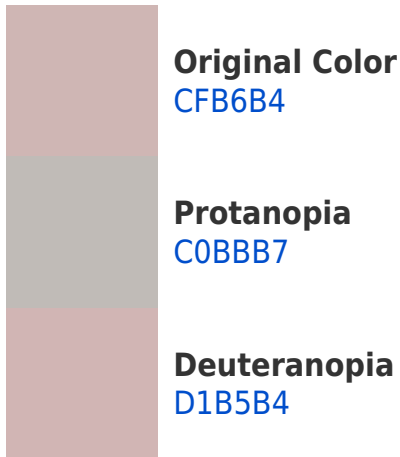


This preview shows how white text looks on a background with the Hex color CFB6B4.

Color Blindness Simulation

Color vision deficiency is a very complex topic, and I could not describe the different causes any better than Wikipedia does, so if you want to learn more, you should check out their [article about color blindness](#).

Dichromacy





Tritanopia
D1B4C2

Trichromacy



Original Color
CFB6B4

Protanomaly
C5B9B6

Deuteranomaly
D0B5B4

Tritanomaly
D0B5BD

Monochromacy



Original Color
CFB6B4

Achromatopsia
BDBDBD

Achromatomaly
C4BABA

CSS Examples

Text

The CSS property to change the color of the text to Hex CFB6B4 is called "color". The color property can be set on classes, ids or directly on the HTML element.

This example shows how text in the color #CFB6B4 looks like.

```
.text, #text, p{  
    color:#CFB6B4  
}
```

If you want to add a text shadow in that color use the text-shadow property, you can generate a text shadow directly with our [CSS Text Shadow Generator](#).

Here you see how black text with a 4 pixel #CFB6B4 colored shadow looks like.

```
.shadow{ text-shadow: 4px 4px 2px #CFB6B4  
}
```

Border

The CSS property to change the border of an element to Hex CFB6B4 is called "border". The border property can be set on classes, ids or directly on the HTML element.

This example shows the color as border, it can be applied via the CSS property "border" or "border-color".

```
.border, #border, table{ border:4px solid  
#CFB6B4 }
```

If only the border color should be changed use the property `border-color`.

```
.border{ border-color:#CFB6B4 }
```

If you want to add a box shadow in that color use:

Here you see how a box with a 4 pixel #CFB6B4 colored shadow looks like.

```
.boxshadow{ -moz-box-shadow:4px 4px 4px  
4px #CFB6B4; -webkit-box-shadow:4px 4px  
4px 4px #CFB6B4; box-shadow:4px 4px 4px  
4px #CFB6B4 }
```

Background

The CSS property to change the background color of an element to Hex CFB6B4 is called "background". The background property can be set on classes, ids or directly on the HTML element.

```
.background, #background, body{  
background:#CFB6B4 }
```

If only the background color should be changed can be used:

```
.background{ background-color:#CFB6B4 }
```

This example shows the color as background, it is applied via the CSS property "background".

To optimize and compress your CSS code, you can use our [online CSS compressor and optimizer](#) based on csstidy. If you want to create a linear or radial gradient as background or border, check our [CSS Gradient Generator](#).

Hey! You found this booklet interesting? Support Converting Colors with the new Membership Option!

The pro membership hides all ads, plus gives you double the colors in the color bucket, and more awesome pro features!

[Learn more, Memberships starting at \\$2.50/m!](#)

**Follow me
on Twitter!**

@ConvertingColor