

Converting Colors

Hex(CFB6B9)

Have a look what the booklet for
Hex(CFB6B9) contains.

| | |
|--|----|
| Hex(CFB6B9) | 3 |
| <i>Conversions</i> | 4 |
| <i>Details</i> | 6 |
| <i>Harmonies</i> | 11 |
| <i>Previews</i> | 23 |
| <i>Color Blindness Simulation</i> | 26 |
| <i>CSS Examples</i> | 29 |

Color

Hex(CFB6B9)

Conversions

Conversions Part 1

| Format | Color |
|-------------|---------------------------|
| Hex | CFB6B9 |
| RGB | 207, 182, 185 |
| RGB Percent | 81%, 71%, 73% |
| CMY | 0.1882, 0.2863, 0.2745 |
| CMYK | 0.00, 0.12, 0.11, 0.19 |
| HSL | 353°, 21%, 76% |
| HSV | 353°, 12%, 81% |
| XYZ | 51.2170, 50.2241, 52.8937 |
| YIQ | 189.8170, 13.9370, 6.2330 |

Conversions

Conversions Part 2

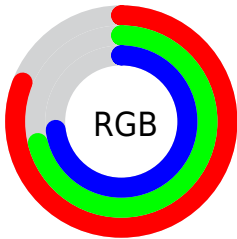
| Format | Color |
|-------------------------------------|-------------------------------|
| R _Y B | 207, 182, 185 |
| Decimal | 13612729 |
| CIE Lab | 76.21, 9.43, 1.76 |
| CIE LCh | 76, 9.596, 10.542 |
| Yxy | 50.2241, 0.3319, 0.3254 |
| Android (android.graphics.Color) | 4291802809 (0xFFCFB6B9) |
| YUV | 189.8170, -2.3748, 15.0695 |
| Hunter-Lab | 70.8689, 4.9814, 5.3566 |

Details

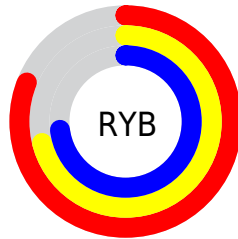
The Hex color **CFB6B9** is a light color, and the websafe version is hex **CCCCCC**. A complement of this color would be **B6CFCC**, and the grayscale version is **BEBEBE**.

A 20% lighter version of the original color is **FFEEF1**, and **998184** is the 20% darker color. If you saturate the color by 10%, you get **CFA1A7**, and if you desaturate by 10%, it is **CFCBCB**.

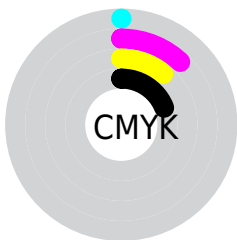
Distribution



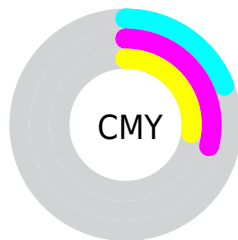
- Red (81%)
- Green (71%)
- Blue (73%)



- Red (81%)
- Yellow (71%)
- Blue (73%)



- Cyan (0%)
- Magenta (12%)
- Yellow (11%)
- Black (19%)



- Cyan (19%)
- Magenta (29%)
- Yellow (27%)

Brightness & Saturation Gradients

These gradients show how the Hex color CFB6B9 changes by changing the brightness by 10 percent. The first figure shows a shift by +10% for each color and the second figure -10%.

Similar to the brightness gradients but the following saturation gradients show a change of the Hex color CFB6B9 by changing the saturation by 10% instead.

 CFB6B9

 CFB6B9

FFFFFF

 B39B9E

 FFEF1

 998184

 7E686B

 655053

 4D393C

 362326

 210F11

 000000

 CFB6B9

 CFB6B9

 CFA1A7

 CFCBCB

 CF8D95

 CFDFDD

 CF7882

 CFF4F0

 CF6370

 CFFFFFF

 CF4F5E

 CF3A4C

 CF2539

 CF1027

 CF0019

Harmonies

Analogous

The Analogous color harmony consists of three colors that are next to each other on the color wheel.



CAB7C2



CFB6B9



CEB7B1

Triad

The Triadic color harmony groups three colors that are evenly spaced from another and form a triangle on the color wheel.



CFB6B9



B6BFAE



ADBECC

Complementary

The Complementary color scheme is a pair of colors which are on the opposite of each other on the color wheel.



CFB6B9



B6CFCC

Split Complementary

Split-complementary colors differ from the complementary color scheme. The scheme consists of three colors, the original color and two neighbors of the complement color.



A7C0C7



CFB6B9



ACC1B6

Square

The Square scheme is like the rectangle color scheme, but the four colors are evenly spaced on the color wheel.



CFB6B9



C0BCAB



A7C1BF



B7BCCD

Rectangle

The Rectangle color scheme consists of four colors that form a rectangle on the color wheel.



CFB6B9



CBB8AD



A7C1BF



AABFCB

Sweetspot

The Sweet Spot groups the original color and five complimentary colors.



CFB6B9



FFF5F6



CCB6CF



80797A



000000



808080

Same Dimension

The Same Dimension uses a secret algorithm to generate beautiful new colors.



CFB6B9



FFDBE0



CFBFB6



695E5F



A80014



290005

Inverse Universe

The Inverse Universe completely reimagines the original color for something new.



CFB6B9



FFDBE0



B6C6CF



695E5F



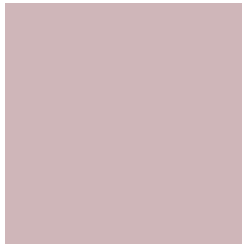
A80014



290005

Previews

White Background



This preview shows how the Hex color CFB6B9 looks on a white background.

Color Contrast Check

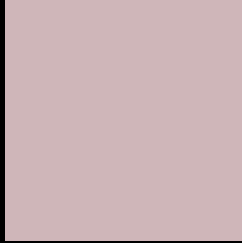
Large Text (above 18pt) WCAG AA × Fail

Any Text WCAG AA × Fail

Large Text (above 18pt) WCAG AAA × Fail

Any Text WCAG AAA × Fail

Black Background



This preview shows how the Hex color CFB6B9 looks on a black background.

Color Contrast Check

Large Text (above 18pt) WCAG AA ✓ Pass

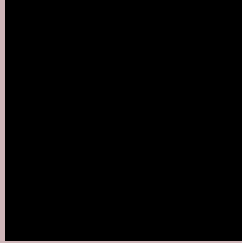
Any Text WCAG AA ✓ Pass

Large Text (above 18pt) WCAG AAA ✓ Pass

Any Text WCAG AAA ✓ Pass

If you want to check with other color combinations, try the [Color Contrast Checker](#).

Hex CFB6B9 Background



This preview shows how black text looks on a background with the Hex color CFB6B9.



This preview shows how white text looks on a background with the Hex color CFB6B9.

Color Blindness Simulation

Color vision deficiency is a very complex topic, and I could not describe the different causes any better than Wikipedia does, so if you want to learn more, you should check out their [article about color blindness](#).

Dichromacy



Original Color
CFB6B9

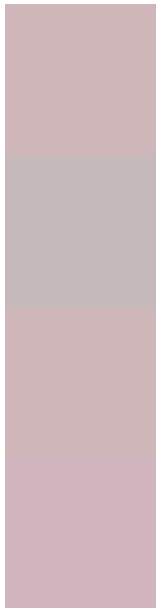
Protanopia
BFBBBC

Deuteranopia
CFB6B9



Tritanopia
D0B4C3

Trichromacy



Original Color
CFB6B9

Protanomaly
C5B9BB

Deuteranomaly
CFB6B9

Tritanomaly
D0B5BF

Monochromacy



Original Color
CFB6B9

Achromatopsia
BEBEBE

Achromatomaly
C4BBBC

CSS Examples

Text

The CSS property to change the color of the text to Hex CFB6B9 is called "color". The color property can be set on classes, ids or directly on the HTML element.

This example shows how text in the color #CFB6B9 looks like.

```
.text, #text, p{  
    color:#CFB6B9  
}
```

If you want to add a text shadow in that color use the text-shadow property, you can generate a text shadow directly with our [CSS Text Shadow Generator](#).

Here you see how black text with a 4 pixel #CFB6B9 colored shadow looks like.

```
.shadow{ text-shadow: 4px 4px 2px #CFB6B9
}
```

Border

The CSS property to change the border of an element to Hex CFB6B9 is called "border". The border property can be set on classes, ids or directly on the HTML element.

This example shows the color as border, it can be applied via the CSS property "border" or "border-color".

```
.border, #border, table{ border:4px solid
#CFB6B9 }
```

If only the border color should be changed use the property `border-color`.

```
.border{ border-color:#CFB6B9 }
```

If you want to add a box shadow in that color use:

Here you see how a box with a 4 pixel #CFB6B9 colored shadow looks like.

```
.boxshadow{ -moz-box-shadow:4px 4px 4px  
4px #CFB6B9; -webkit-box-shadow:4px 4px  
4px 4px #CFB6B9; box-shadow:4px 4px 4px  
4px #CFB6B9 }
```

Background

The CSS property to change the background color of an element to Hex CFB6B9 is called "background". The background property can be set on classes, ids or directly on the HTML element.

```
.background, #background, body{  
background:#CFB6B9 }
```

If only the background color should be changed can be used:

```
.background{ background-color:#CFB6B9 }
```

This example shows the color as background, it is applied via the CSS property "background".

To optimize and compress your CSS code, you can use our [online CSS compressor and optimizer](#) based on csstidy. If you want to create a linear or radial gradient as background or border, check our [CSS Gradient Generator](#).

Hey! You found this booklet interesting? Support Converting Colors with the new Membership Option!

The pro membership hides all ads, plus gives you double the colors in the color bucket, and more awesome pro features!

[Learn more, Memberships starting at \\$2.50/m!](#)

**Follow me
on Twitter!**

@ConvertingColor