

Converting Colors

Hex(CFB8B5)

Have a look what the booklet for
Hex(CFB8B5) contains.

Hex(CFB8B5)	3
<i>Conversions</i>	4
<i>Details</i>	6
<i>Harmonies</i>	11
<i>Previews</i>	23
<i>Color Blindness Simulation</i>	26
<i>CSS Examples</i>	29

Color

Hex(CFB8B5)

Conversions

Conversions Part 1

Format	Color
Hex	CFB8B5
RGB	207, 184, 181
RGB Percent	81%, 72%, 71%
CMY	0.1882, 0.2784, 0.2902
CMYK	0.00, 0.11, 0.13, 0.19
HSL	7°, 21%, 76%
HSV	7°, 13%, 81%
XYZ	51.2131, 50.8826, 50.8382
YIQ	190.5350, 14.6710, 3.9430

Conversions

Conversions Part 2

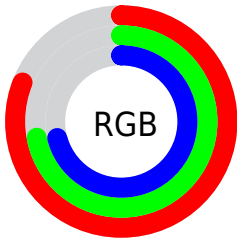
Format	Color
R _Y B	207, 184, 181
Decimal	13613237
CIE Lab	76.61, 7.69, 4.51
CIE LCh	77, 8.919, 30.383
Yxy	50.8826, 0.3349, 0.3327
Android (android.graphics.Color)	4291803317 (0xFFCFB8B5)
YUV	190.5350, -4.7008, 14.4398
Hunter-Lab	71.3320, 3.3237, 7.6766

Details

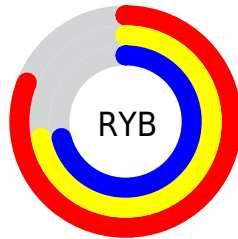
The Hex color **CFB8B5** is a light color, and the websafe version is hex **CCCCCC**. A complement of this color would be **B5CCCF**, and the grayscale version is **BFBFBF**.

A 20% lighter version of the original color is **FFF0ED**, and **988380** is the 20% darker color. If you saturate the color by 10%, you get **CFA6A0**, and if you desaturate by 10%, it is **CFCACA**.

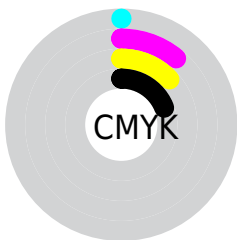
Distribution



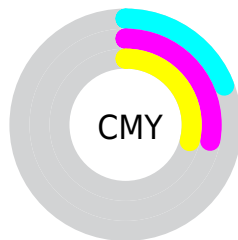
- Red (81%)
- Green (72%)
- Blue (71%)



- Red (81%)
- Yellow (72%)
- Blue (71%)



- Cyan (0%)
- Magenta (11%)
- Yellow (13%)
- Black (19%)



- Cyan (19%)
- Magenta (28%)
- Yellow (29%)

Brightness & Saturation Gradients

These gradients show how the Hex color CFB8B5 changes by changing the brightness by 10 percent. The first figure shows a shift by +10% for each color and the second figure -10%.

Similar to the brightness gradients but the following saturation gradients show a change of the Hex color CFB8B5 by changing the saturation by 10% instead.

 CFB8B5

 CFB8B5

FFFFFF

 B39D9A

 FFF0ED

 988380

 7E6A67

 65524F

 4D3B38

 362523

 21100D

 000000

 CFB8B5

 CFB8B5

 CFA6A0

 CFCACA

 CF938C

 CFDDDE

 CF8177

 CFEFF3

 CF6F62

 CFFFFFF

 CF5C4E

 CF4A39

 CF3824

 CF260F

 CF1800

Harmonies

Analogous

The Analogous color harmony consists of three colors that are next to each other on the color wheel.



CEB8BD



CFB8B5



CBBAAF

Triad

The Triadic color harmony groups three colors that are evenly spaced from another and form a triangle on the color wheel.



CFB8B5



B1C1B5



B5BECD

Complementary

The Complementary color scheme is a pair of colors which are on the opposite of each other on the color wheel.



CFB8B5



B5CCCF

Split Complementary

Split-complementary colors differ from the complementary color scheme. The scheme consists of three colors, the original color and two neighbors of the complement color.



ADC0CB



CFB8B5



ABC2BD

Square

The Square scheme is like the rectangle color scheme, but the four colors are evenly spaced on the color wheel.



CFB8B5



BBBFAF



A9C2C5



BFBBCB

Rectangle

The Rectangle color scheme consists of four colors that form a rectangle on the color wheel.



CFB8B5



C7BCAD



A9C2C5



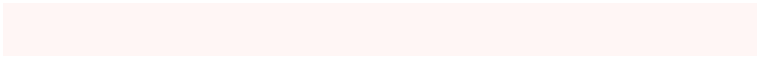
B2BFCD

Sweetspot

The Sweet Spot groups the original color and five complimentary colors.



CFB8B5



FFF6F5



CFB5CC



807A79



000000



808080

Same Dimension

The Same Dimension uses a secret algorithm to generate beautiful new colors.



CFB8B5



FFDDD9



CFC5B5



695F5E



A81300



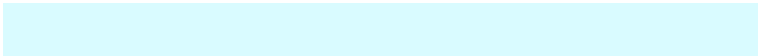
290500

Inverse Universe

The Inverse Universe completely reimagines the original color for something new.



B5CCCF



D9FBFF



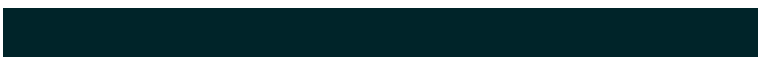
B5BFCF



5E6769



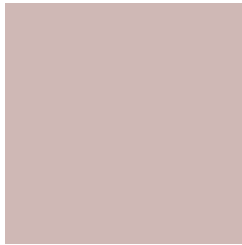
0095A8



002429

Previews

White Background



This preview shows how the Hex color CFB8B5 looks on a white background.

Color Contrast Check

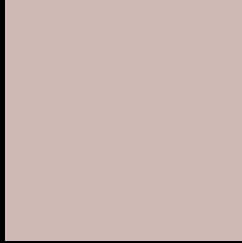
Large Text (above 18pt) WCAG AA × Fail

Any Text WCAG AA × Fail

Large Text (above 18pt) WCAG AAA × Fail

Any Text WCAG AAA × Fail

Black Background



This preview shows how the Hex color CFB8B5 looks on a black background.

Color Contrast Check

Large Text (above 18pt) WCAG AA ✓ Pass

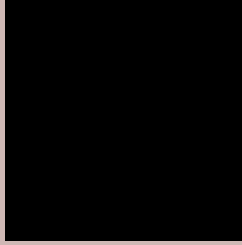
Any Text WCAG AA ✓ Pass

Large Text (above 18pt) WCAG AAA ✓ Pass

Any Text WCAG AAA ✓ Pass

If you want to check with other color combinations, try the [Color Contrast Checker](#).

Hex CFB8B5 Background



This preview shows how black text looks on a background with the Hex color CFB8B5.



This preview shows how white text looks on a background with the Hex color CFB8B5.

Color Blindness Simulation

Color vision deficiency is a very complex topic, and I could not describe the different causes any better than Wikipedia does, so if you want to learn more, you should check out their [article about color blindness](#).

Dichromacy





Tritanopia
D1B6C4

Trichromacy



Original Color
CFB8B5

Protanomaly
C7BBB6

Deuteranomaly
D1B7B5

Tritanomaly
D0B7BF

Monochromacy



Original Color
CFB8B5

Achromatopsia
BFBFBF

Achromatomaly
C5BCBB

CSS Examples

Text

The CSS property to change the color of the text to Hex CFB8B5 is called "color". The color property can be set on classes, ids or directly on the HTML element.

This example shows how text in the color #CFB8B5 looks like.

```
.text, #text, p{  
    color:#CFB8B5  
}
```

If you want to add a text shadow in that color use the text-shadow property, you can generate a text shadow directly with our [CSS Text Shadow Generator](#).

Here you see how black text with a 4 pixel #CFB8B5 colored shadow looks like.

```
.shadow{ text-shadow: 4px 4px 2px #CFB8B5
}
```

Border

The CSS property to change the border of an element to Hex CFB8B5 is called "border". The border property can be set on classes, ids or directly on the HTML element.

This example shows the color as border, it can be applied via the CSS property "border" or "border-color".

```
.border, #border, table{ border:4px solid
#CFB8B5 }
```

If only the border color should be changed use the property `border-color`.

```
.border{ border-color:#CFB8B5 }
```

If you want to add a box shadow in that color use:

Here you see how a box with a 4 pixel #CFB8B5 colored shadow looks like.

```
.boxshadow{ -moz-box-shadow:4px 4px 4px  
4px #CFB8B5; -webkit-box-shadow:4px 4px  
4px 4px #CFB8B5; box-shadow:4px 4px 4px  
4px #CFB8B5 }
```

Background

The CSS property to change the background color of an element to Hex CFB8B5 is called "background". The background property can be set on classes, ids or directly on the HTML element.

```
.background, #background, body{  
background:#CFB8B5 }
```

If only the background color should be changed can be used:

```
.background{ background-color:#CFB8B5 }
```

This example shows the color as background, it is applied via the CSS property "background".

To optimize and compress your CSS code, you can use our [online CSS compressor and optimizer](#) based on csstidy. If you want to create a linear or radial gradient as background or border, check our [CSS Gradient Generator](#).

Hey! You found this booklet interesting? Support Converting Colors with the new Membership Option!

The pro membership hides all ads, plus gives you double the colors in the color bucket, and more awesome pro features!

[Learn more, Memberships starting at \\$2.50/m!](#)

**Follow me
on Twitter!**

@ConvertingColor