

# Converting Colors

Hex(CFBBBD)

Have a look what the booklet for  
Hex(CFBBBD) contains.

<b>Hex(CFBBBD)</b> .....	3
<i><b>Conversions</b></i> .....	4
<i><b>Details</b></i> .....	6
<i><b>Harmonies</b></i> .....	11
<i><b>Previews</b></i> .....	23
<i><b>Color Blindness Simulation</b></i> .....	26
<i><b>CSS Examples</b></i> .....	29

# **Color**

**Hex(CFBBBD)**

# Conversions

## Conversions Part 1

Format	Color
Hex	CFBBBD
RGB	207, 187, 189
RGB Percent	81%, 73%, 74%
CMY	0.1882, 0.2667, 0.2588
CMYK	0.00, 0.10, 0.09, 0.19
HSL	354°, 17%, 77%
HSV	354°, 10%, 81%
XYZ	52.6878, 52.4802, 55.4969
YIQ	193.2080, 11.2780, 4.8620

# Conversions

## Conversions Part 2

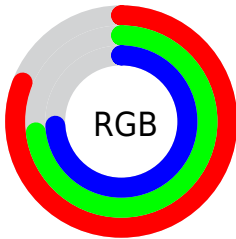
<b>Format</b>	<b>Color</b>
R <sub>YB</sub>	207, 187, 189
Decimal	13614013
CIE Lab	77.57, 7.43, 1.56
CIE LCh	78, 7.590, 11.886
Yxy	52.4802, 0.3279, 0.3266
Android (android.graphics.Color)	4291804093 (0xFFCFBBBD)
YUV	193.2080, -2.0745, 12.0956
Hunter-Lab	72.4432, 3.0470, 5.2897

# Details

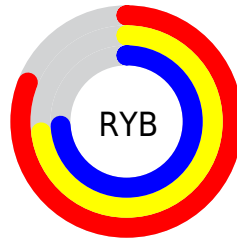
The Hex color **CFBBBD** is a light color, and the websafe version is hex **CCCCCC**. A complement of this color would be **BBCFCD**, and the grayscale version is **C1C1C1**.

A 20% lighter version of the original color is **FFF3F5**, and **998688** is the 20% darker color. If you saturate the color by 10%, you get **CFA6AA**, and if you desaturate by 10%, it is **CFD0D0**.

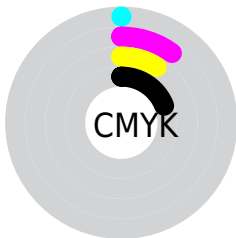
# Distribution



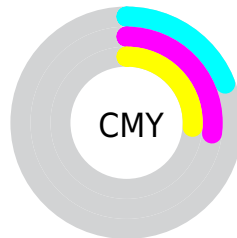
- Red (81%)
- Green (73%)
- Blue (74%)



- Red (81%)
- Yellow (73%)
- Blue (74%)



- Cyan (0%)
- Magenta (10%)
- Yellow (9%)
- Black (19%)



- Cyan (19%)
- Magenta (27%)
- Yellow (26%)

# Brightness & Saturation Gradients

These gradients show how the Hex color CFBBBD changes by changing the brightness by 10 percent. The first figure shows a shift by +10% for each color and the second figure -10%.

Similar to the brightness gradients but the following saturation gradients show a change of the Hex color CFBBBD by changing the saturation by 10% instead.



■ CFBBBD

■ CFBBBD

FFFFFF

■ B3A0A2

■ FFF3F5

■ 998688

■ 7F6D6E

■ 655456

■ 4D3D3F

■ 362729

■ 211315

■ 000000

■ CFBBBD

■ CFBBBD

 CFA6AA

 CFD0D0

 CF9298

 CFE4E2

 CF7D85

 CFF9F5

 CF6872

 CFFFFFF

 CF5360

 CF3F4D

 CF2A3B

 CF1528

 CF0115

# Harmonies

## Analogous

The Analogous color harmony consists of three colors that are next to each other on the color wheel.



CBBBC4



CFBBBD



CEBCB7

# Triad

The Triadic color harmony groups three colors that are evenly spaced from another and form a triangle on the color wheel.



CFBBBD



BAC2B5



B4C2CD

# Complementary

The Complementary color scheme is a pair of colors which are on the opposite of each other on the color wheel.



CFBBBD



BBCFCD

# Split Complementary

Split-complementary colors differ from the complementary color scheme. The scheme consists of three colors, the original color and two neighbors of the complement color.



AFC3C9



CFBBBD



B3C4BB

# Square

The Square scheme is like the rectangle color scheme, but the four colors are evenly spaced on the color wheel.



CFBBBD



C3C0B2



AFC4C2



BCBFCD

# Rectangle

The Rectangle color scheme consists of four colors that form a rectangle on the color wheel.



CFBBBD



CCBDB3



AFC4C2



B2C2CC



# Sweetspot

The Sweet Spot groups the original color and five complimentary colors.



CFBBBD



FFF7F8



CDBBCF



807A7B



000000



808080



# Same Dimension

The Same Dimension uses a secret algorithm to generate beautiful new colors.



CFBBBD



FFE0E3



CFC3BB



695E5F



A80011



290004



# Inverse Universe

The Inverse Universe completely reimagines the original color for something new.



CFBBBD



FFE0E3



BBC7CF



695E5F



A80011

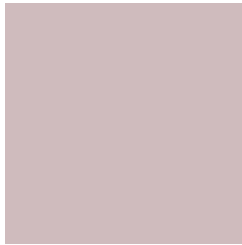


290004



# Previews

## White Background



This preview shows how the Hex color CFBBBD looks on a white background.

## Color Contrast Check

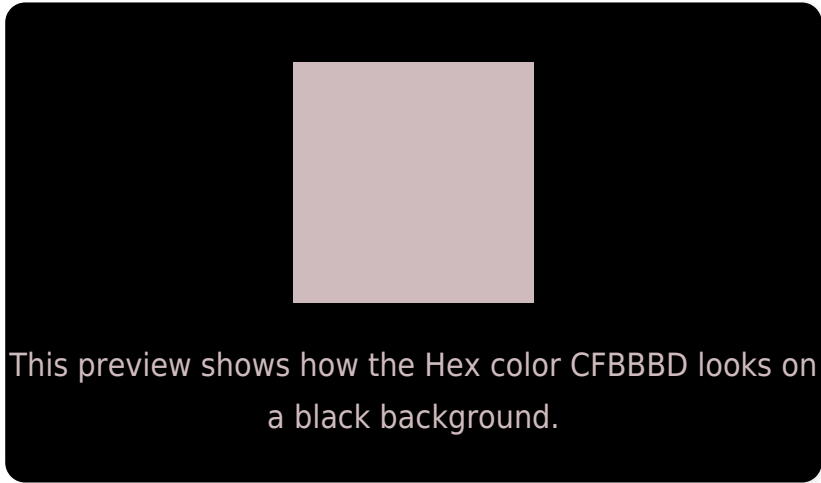
Large Text (above 18pt) WCAG AA × Fail

Any Text WCAG AA × Fail

Large Text (above 18pt) WCAG AAA × Fail

Any Text WCAG AAA × Fail

# Black Background



## Color Contrast Check

Large Text (above 18pt) WCAG AA ✓ Pass

Any Text WCAG AA ✓ Pass

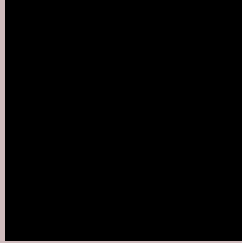
Large Text (above 18pt) WCAG AAA ✓ Pass

Any Text WCAG AAA ✓ Pass

If you want to check with other color combinations, try the [Color Contrast Checker](#).



## Hex CFBBBD Background



This preview shows how black text looks on a background with the Hex color CFBBBD.



This preview shows how white text looks on a background with the Hex color CFBBBD.

# Color Blindness Simulation

Color vision deficiency is a very complex topic, and I could not describe the different causes any better than Wikipedia does, so if you want to learn more, you should check out their [article about color blindness](#).

## Dichromacy



**Original Color**  
CFBBBD

**Protanopia**  
C3BFBF

**Deuteranopia**  
D3BABD



**Tritanopia**  
D1B9C8

# Trichromacy



**Original Color**  
CFBBBD

**Protanomaly**  
C7BEBE

**Deuteranomaly**  
D2BABD

**Tritanomaly**  
D0BAC4

# Monochromacy



**Original Color**  
CFBBBD

**Achromatopsia**  
C1C1C1

**Achromatomaly**  
C6BFC0

# CSS Examples

## Text

The CSS property to change the color of the text to Hex CFBBBD is called "color". The color property can be set on classes, ids or directly on the HTML element.

This example shows how text in the color #CFBBBD looks like.

```
.text, #text, p{  
    color:#CFBBBD  
}
```

If you want to add a text shadow in that color use the text-shadow property, you can generate a text shadow directly with our [CSS Text Shadow Generator](#).

Here you see how black text with a 4 pixel #CFBBBD colored shadow looks like.

```
.shadow{ text-shadow: 4px 4px 2px #CFBBBD }  
}
```

## Border

The CSS property to change the border of an element to Hex CFBBBD is called "border". The border property can be set on classes, ids or directly on the HTML element.

This example shows the color as border, it can be applied via the CSS property "border" or "border-color".

```
.border, #border, table{ border:4px solid #CFBBBD }  
}
```

If only the border color should be changed use the property `border-color`.

```
.border{ border-color:#CFBBBD }
```

If you want to add a box shadow in that color use:

Here you see how a box with a 4 pixel #CFBBBD colored shadow looks like.

```
.boxshadow{ -moz-box-shadow:4px 4px 4px  
4px #CFBBBD; -webkit-box-shadow:4px 4px  
4px 4px #CFBBBD; box-shadow:4px 4px 4px  
4px #CFBBBD }
```

# Background

The CSS property to change the background color of an element to Hex CFBBBD is called "background". The background property can be set on classes, ids or directly on the HTML element.

```
.background, #background, body{  
background:#CFBBBD }
```

If only the background color should be changed can be used:

```
.background{ background-color:#CFBBBD }
```

This example shows the color as background, it is applied via the CSS property "background".

To optimize and compress your CSS code, you can use our [online CSS compressor and optimizer](#) based on csstidy. If you want to create a linear or radial gradient as background or border, check our [CSS Gradient Generator](#).



Hey! You found this booklet interesting? Support Converting Colors with the new Membership Option!

The pro membership hides all ads, plus gives you double the colors in the color bucket, and more awesome pro features!

**[Learn more, Memberships starting at \\$2.50/m!](#)**

**Follow me  
on Twitter!**

@ConvertingColor