

Converting Colors

Hex(CFBDB3)

Have a look what the booklet for
Hex(CFBDB3) contains.

Hex(CFBDB3)	3
<i>Conversions</i>	4
<i>Details</i>	6
<i>Harmonies</i>	11
<i>Previews</i>	23
<i>Color Blindness Simulation</i>	26
<i>CSS Examples</i>	29

Color

Hex(CFBDB3)

Conversions

Conversions Part 1

Format	Color
Hex	CFBDB3
RGB	207, 189, 179
RGB Percent	81%, 74%, 70%
CMY	0.1882, 0.2588, 0.2980
CMYK	0.00, 0.09, 0.14, 0.19
HSL	21°, 23%, 76%
HSV	21°, 14%, 81%
XYZ	52.0664, 52.9153, 50.1173
YIQ	193.2420, 13.9380, 0.7060

Conversions

Conversions Part 2

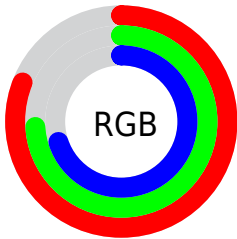
Format	Color
R_{YB}	207, 195, 179
Decimal	13614515
CIE Lab	77.82, 4.69, 7.35
CIE LCh	78, 8.718, 57.418
Yxy	52.9153, 0.3357, 0.3412
Android (android.graphics.Color)	4291804595 (0xFFCFBDB3)
YUV	193.2420, -7.0213, 12.0658
Hunter-Lab	72.7429, 0.4630, 10.0713

Details

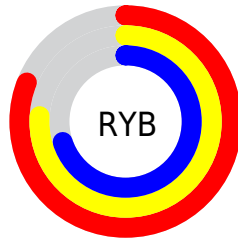
The Hex color **CFBDB3** is a light color, and the websafe version is hex **CCCCCC**. A complement of this color would be **B3C5CF**, and the grayscale version is **C1C1C1**.

A 20% lighter version of the original color is **FFF5EB**, and **99887E** is the 20% darker color. If you saturate the color by 10%, you get **CFB09E**, and if you desaturate by 10%, it is **CFCAC8**.

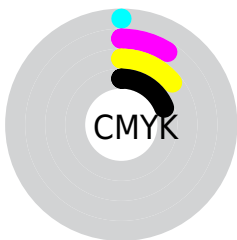
Distribution



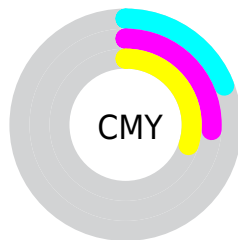
- Red (81%)
- Green (74%)
- Blue (70%)



- Red (81%)
- Yellow (76%)
- Blue (70%)



- Cyan (0%)
- Magenta (9%)
- Yellow (14%)
- Black (19%)



- Cyan (19%)
- Magenta (26%)
- Yellow (30%)

Brightness & Saturation Gradients

These gradients show how the Hex color CFBDB3 changes by changing the brightness by 10 percent. The first figure shows a shift by +10% for each color and the second figure -10%.

Similar to the brightness gradients but the following saturation gradients show a change of the Hex color CFBDB3 by changing the saturation by 10% instead.



CFBDB3



CFBDB3

FFFFFF



B3A298



FFF5EB



99887E



7E6E65



65564D



4D3F37



362921



21150B



000000



CFBDB3



CFBDB3

 CFB09E

 CFCAC8

 CFA28A

 CFD8DC

 CF9575

 CFE5F1

 CF8860

 CFF2FF

 CF7A4B

 CFFFFFF

 CF6D37

 CF6022

 CF530D

 CF4A00

Harmonies

Analogous

The Analogous color harmony consists of three colors that are next to each other on the color wheel.



D2BBB9



CFBDB3



C8C0B0

Triad

The Triadic color harmony groups three colors that are evenly spaced from another and form a triangle on the color wheel.



CFBDB3



AFC5BF



C1BFCF

Complementary

The Complementary color scheme is a pair of colors which are on the opposite of each other on the color wheel.



CFBDB3



B3C5CF

Split Complementary

Split-complementary colors differ from the complementary color scheme. The scheme consists of three colors, the original color and two neighbors of the complement color.



B7C1D0



CFBDB3



ADC5C7

Square

The Square scheme is like the rectangle color scheme, but the four colors are evenly spaced on the color wheel.



CFBDB3



B6C4B7



B0C4CE



CABCC9

Rectangle

The Rectangle color scheme consists of four colors that form a rectangle on the color wheel.



CFBDB3



C2C1B1



B0C4CE



BEBFD0

Sweetspot

The Sweet Spot groups the original color and five complimentary colors.



CFBDB3



FFF8F5



CFB3C5



807B79



000000



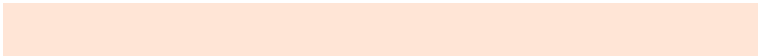
808080

Same Dimension

The Same Dimension uses a secret algorithm to generate beautiful new colors.



CFBDB3



FFE5D6



CFCBB3



69625E



A83C00



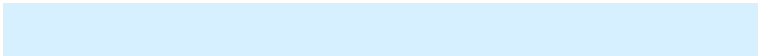
290F00

Inverse Universe

The Inverse Universe completely reimagines the original color for something new.



B3C5CF



D6F0FF



B3B7CF



5E6569



006CA8



001A29

Previews

White Background



This preview shows how the Hex color `CFBDB3` looks on a white background.

Color Contrast Check

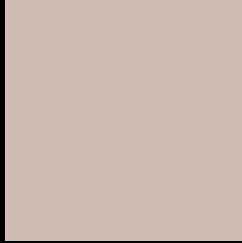
Large Text (above 18pt) WCAG AA × Fail

Any Text WCAG AA × Fail

Large Text (above 18pt) WCAG AAA × Fail

Any Text WCAG AAA × Fail

Black Background



This preview shows how the Hex color CFBDB3 looks on a black background.

Color Contrast Check

Large Text (above 18pt) WCAG AA ✓ Pass

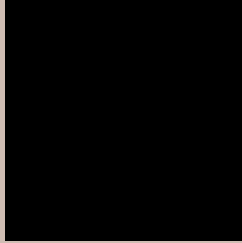
Any Text WCAG AA ✓ Pass

Large Text (above 18pt) WCAG AAA ✓ Pass

Any Text WCAG AAA ✓ Pass

If you want to check with other color combinations, try the [Color Contrast Checker](#).

Hex CFBDB3 Background



This preview shows how black text looks on a background with the Hex color CFBDB3.

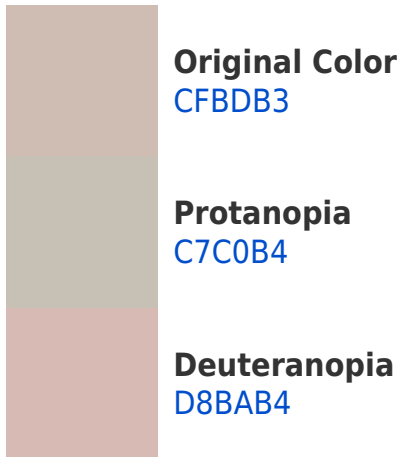



This preview shows how white text looks on a background with the Hex color CFBDB3.

Color Blindness Simulation

Color vision deficiency is a very complex topic, and I could not describe the different causes any better than Wikipedia does, so if you want to learn more, you should check out their [article about color blindness](#).

Dichromacy





Tritanopia
D2BAC8

Trichromacy



Original Color
CFBDB3

Protanomaly
CABFB4

Deuteranomaly
D5BBB4

Tritanomaly
D1BBC0

Monochromacy



Original Color
CFBDB3

Achromatopsia
C1C1C1

Achromatomaly
C6C0BC

CSS Examples

Text

The CSS property to change the color of the text to Hex CFBDB3 is called "color". The color property can be set on classes, ids or directly on the HTML element.

This example shows how text in the color #CFBDB3 looks like.

```
.text, #text, p{  
    color:#CFBDB3  
}
```

If you want to add a text shadow in that color use the text-shadow property, you can generate a text shadow directly with our [CSS Text Shadow Generator](#).

Here you see how black text with a 4 pixel #CFBDB3 colored shadow looks like.

```
.shadow{ text-shadow: 4px 4px 2px #CFBDB3
}
```

Border

The CSS property to change the border of an element to Hex CFBDB3 is called "border". The border property can be set on classes, ids or directly on the HTML element.

This example shows the color as border, it can be applied via the CSS property "border" or "border-color".

```
.border, #border, table{ border:4px solid
#CFBDB3 }
```

If only the border color should be changed use the property `border-color`.

```
.border{ border-color:#CFBDB3 }
```

If you want to add a box shadow in that color use:

Here you see how a box with a 4 pixel #CFBDB3 colored shadow looks like.

```
.boxshadow{ -moz-box-shadow:4px 4px 4px  
4px #CFBDB3; -webkit-box-shadow:4px 4px  
4px 4px #CFBDB3; box-shadow:4px 4px 4px  
4px #CFBDB3 }
```

Background

The CSS property to change the background color of an element to Hex CFBDB3 is called "background". The background property can be set on classes, ids or directly on the HTML element.

```
.background, #background, body{  
background:#CFBDB3 }
```

If only the background color should be changed can be used:

```
.background{ background-color:#CFBDB3 }
```

This example shows the color as background, it is applied via the CSS property "background".

To optimize and compress your CSS code, you can use our [online CSS compressor and optimizer](#) based on csstidy. If you want to create a linear or radial gradient as background or border, check our [CSS Gradient Generator](#).

Hey! You found this booklet interesting? Support Converting Colors with the new Membership Option!

The pro membership hides all ads, plus gives you double the colors in the color bucket, and more awesome pro features!

[Learn more, Memberships starting at \\$2.50/m!](#)

**Follow me
on Twitter!**

@ConvertingColor