

Converting Colors

Hex(CFBDB8)

Have a look what the booklet for
Hex(CFBDB8) contains.

| | |
|--|----|
| Hex(CFBDB8) | 3 |
| <i>Conversions</i> | 4 |
| <i>Details</i> | 6 |
| <i>Harmonies</i> | 11 |
| <i>Previews</i> | 23 |
| <i>Color Blindness Simulation</i> | 26 |
| <i>CSS Examples</i> | 29 |

Color

Hex(CFBDB8)

Conversions

Conversions Part 1

| Format | Color |
|-------------|---------------------------|
| Hex | CFBDB8 |
| RGB | 207, 189, 184 |
| RGB Percent | 81%, 74%, 72% |
| CMY | 0.1882, 0.2588, 0.2784 |
| CMYK | 0.00, 0.09, 0.11, 0.19 |
| HSL | 13°, 19%, 77% |
| HSV | 13°, 11%, 81% |
| XYZ | 52.5815, 53.1213, 52.8295 |
| YIQ | 193.8120, 12.3330, 2.2610 |

Conversions

Conversions Part 2

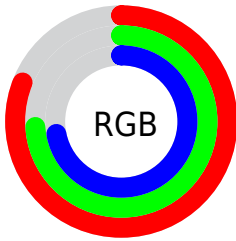
| Format | Color |
|-------------------------------------|-------------------------------|
| R _Y B | 207, 190, 184 |
| Decimal | 13614520 |
| CIE Lab | 77.95, 5.52, 4.82 |
| CIE LCh | 78, 7.324, 41.146 |
| Yxy | 53.1213, 0.3317, 0.3351 |
| Android (android.graphics.Color) | 4291804600 (0xFFCFBDB8) |
| YUV | 193.8120, -4.8373, 11.5659 |
| Hunter-Lab | 72.8843, 1.2289, 8.0433 |

Details

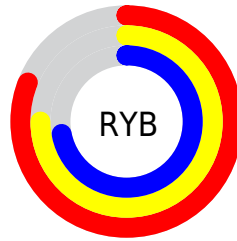
The Hex color **CFBDB8** is a light color, and the websafe version is hex **CCCCCC**. A complement of this color would be **B8CACF**, and the grayscale version is **C2C2C2**.

A 20% lighter version of the original color is **FFF5F0**, and **998883** is the 20% darker color. If you saturate the color by 10%, you get **CFADA3**, and if you desaturate by 10%, it is **CFCDCD**.

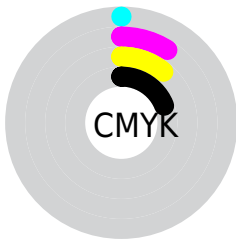
Distribution



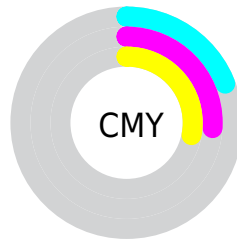
- Red (81%)
- Green (74%)
- Blue (72%)



- Red (81%)
- Yellow (75%)
- Blue (72%)



- Cyan (0%)
- Magenta (9%)
- Yellow (11%)
- Black (19%)



- Cyan (19%)
- Magenta (26%)
- Yellow (28%)

Brightness & Saturation Gradients

These gradients show how the Hex color CFBDB8 changes by changing the brightness by 10 percent. The first figure shows a shift by +10% for each color and the second figure -10%.

Similar to the brightness gradients but the following saturation gradients show a change of the Hex color CFBDB8 by changing the saturation by 10% instead.

 CFBDB8

FFFFFF

 FFF5F0

 CFBDB8

 B3A29D


 998883

 7F6E6A

 655652

 4D3F3B

 362925

 211510

 000000

 CFBDB8

 CFBDB8

 CFADA3

 CFCDCD

 CF9D8F

 CFDDE1

 CF8C7A

 CFEEF6

 CF7C65

 CFFEFF

 CF6C51

 CFFFFFF

 CF5C3C

 CF4C27

 CF3B12

 CF2D00

Harmonies

Analogous

The Analogous color harmony consists of three colors that are next to each other on the color wheel.



D0BCBE



CFBDB8



CBBFB4

Triad

The Triadic color harmony groups three colors that are evenly spaced from another and form a triangle on the color wheel.



CFBDB8



B5C4BC



BDC0CE

Complementary

The Complementary color scheme is a pair of colors which are on the opposite of each other on the color wheel.



CFBDB8



B8CACF

Split Complementary

Split-complementary colors differ from the complementary color scheme. The scheme consists of three colors, the original color and two neighbors of the complement color.



B5C3CD



CFBDB8



B1C5C3

Square

The Square scheme is like the rectangle color scheme, but the four colors are evenly spaced on the color wheel.



CFBDB8



BCC3B6



B1C4C9



C5BECB

Rectangle

The Rectangle color scheme consists of four colors that form a rectangle on the color wheel.



CFBDB8



C6C0B3



B1C4C9



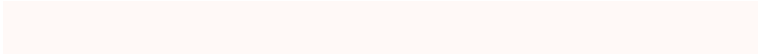
BAC1CE

Sweetspot

The Sweet Spot groups the original color and five complimentary colors.



CFBDB8



FFF9F7



CFB8CA



807C7A



000000



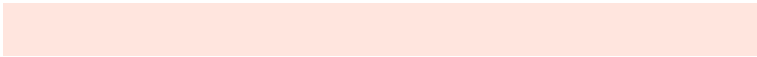
808080

Same Dimension

The Same Dimension uses a secret algorithm to generate beautiful new colors.



CFBDB8



FFE5DE



CFC8B8



69605E



A82500



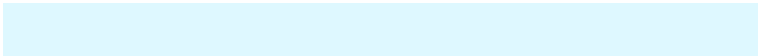
290900

Inverse Universe

The Inverse Universe completely reimagines the original color for something new.



B8CACF



DEF8FF



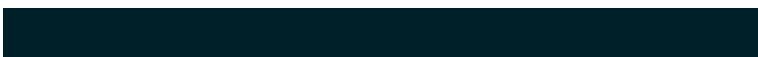
B8BFCF



5E6669



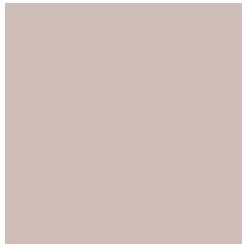
0084A8



002029

Previews

White Background



This preview shows how the Hex color `CFBDB8` looks on a white background.

Color Contrast Check

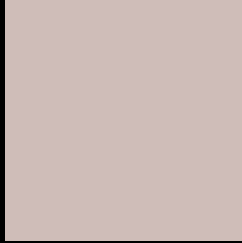
Large Text (above 18pt) WCAG AA × Fail

Any Text WCAG AA × Fail

Large Text (above 18pt) WCAG AAA × Fail

Any Text WCAG AAA × Fail

Black Background



This preview shows how the Hex color CFBDB8 looks on a black background.

Color Contrast Check

Large Text (above 18pt) WCAG AA ✓ Pass

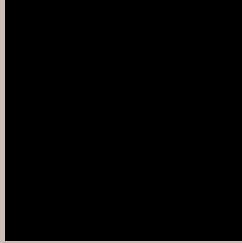
Any Text WCAG AA ✓ Pass

Large Text (above 18pt) WCAG AAA ✓ Pass

Any Text WCAG AAA ✓ Pass

If you want to check with other color combinations, try the [Color Contrast Checker](#).

Hex CFBDB8 Background



This preview shows how black text looks on a background with the Hex color CFBDB8.

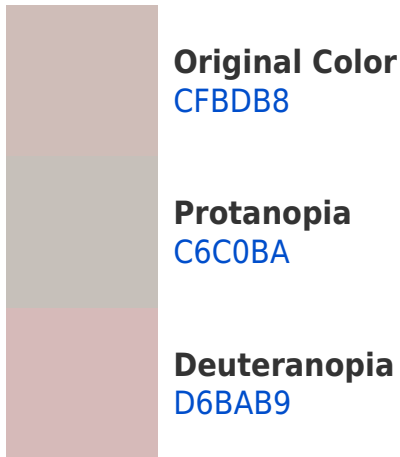



This preview shows how white text looks on a background with the Hex color CFBDB8.

Color Blindness Simulation

Color vision deficiency is a very complex topic, and I could not describe the different causes any better than Wikipedia does, so if you want to learn more, you should check out their [article about color blindness](#).

Dichromacy





Tritanopia
D1BAC9

Trichromacy



Original Color
CFBDB8

Protanomaly
C9BFB9

Deuteranomaly
D3BBB9

Tritanomaly
D0BBC3

Monochromacy



Original Color
CFBDB8

Achromatopsia
C2C2C2

Achromatomaly
C7C0BE

CSS Examples

Text

The CSS property to change the color of the text to Hex CFBDB8 is called "color". The color property can be set on classes, ids or directly on the HTML element.

This example shows how text in the color #CFBDB8 looks like.

```
.text, #text, p{  
    color:#CFBDB8  
}
```

If you want to add a text shadow in that color use the text-shadow property, you can generate a text shadow directly with our [CSS Text Shadow Generator](#).

Here you see how black text with a 4 pixel #CFBDB8 colored shadow looks like.

```
.shadow{ text-shadow: 4px 4px 2px #CFBDB8 }  
}
```

Border

The CSS property to change the border of an element to Hex CFBDB8 is called "border". The border property can be set on classes, ids or directly on the HTML element.

This example shows the color as border, it can be applied via the CSS property "border" or "border-color".

```
.border, #border, table{ border:4px solid #CFBDB8 }  
}
```

If only the border color should be changed use the property `border-color`.

```
.border{ border-color:#CFBDB8 }
```

If you want to add a box shadow in that color use:

Here you see how a box with a 4 pixel #CFBDB8 colored shadow looks like.

```
.boxshadow{ -moz-box-shadow:4px 4px 4px  
4px #CFBDB8; -webkit-box-shadow:4px 4px  
4px 4px #CFBDB8; box-shadow:4px 4px 4px  
4px #CFBDB8 }
```

Background

The CSS property to change the background color of an element to Hex CFBDB8 is called "background". The background property can be set on classes, ids or directly on the HTML element.

```
.background, #background, body{  
background:#CFBDB8 }
```

If only the background color should be changed can be used:

```
.background{ background-color:#CFBDB8 }
```

This example shows the color as background, it is applied via the CSS property "background".

To optimize and compress your CSS code, you can use our [online CSS compressor and optimizer](#) based on csstidy. If you want to create a linear or radial gradient as background or border, check our [CSS Gradient Generator](#).

Hey! You found this booklet interesting? Support Converting Colors with the new Membership Option!

The pro membership hides all ads, plus gives you double the colors in the color bucket, and more awesome pro features!

[Learn more, Memberships starting at \\$2.50/m!](#)

**Follow me
on Twitter!**

@ConvertingColor