

Converting Colors

Hex(CFBEBE)

Have a look what the booklet for
Hex(CFBEBE) contains.

Hex(CFBEBE)	3
<i>Conversions</i>	4
<i>Details</i>	6
<i>Harmonies</i>	11
<i>Previews</i>	23
<i>Color Blindness Simulation</i>	26
<i>CSS Examples</i>	29

Color

Hex(CFBEBE)

Conversions

Conversions Part 1

Format	Color
Hex	CFBEBE
RGB	207, 190, 190
RGB Percent	81%, 75%, 75%
CMY	0.1882, 0.2549, 0.2549
CMYK	0.00, 0.08, 0.08, 0.19
HSL	0°, 15%, 78%
HSV	0°, 8%, 81%
XYZ	53.4398, 53.8100, 56.2850
YIQ	195.0830, 10.1320, 3.6040

Conversions

Conversions Part 2

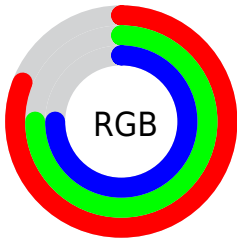
Format	Color
R_{YB}	207, 190, 190
Decimal	13614782
CIE Lab	78.35, 5.99, 2.16
CIE LCh	78, 6.372, 19.832
Yxy	53.8100, 0.3268, 0.3290
Android (android.graphics.Color)	4291804862 (0xFFCFBEBE)
YUV	195.0830, -2.5059, 10.4512
Hunter-Lab	73.3553, 1.6667, 5.8559

Details

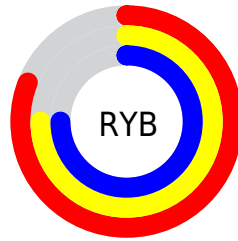
The Hex color **CFBEBE** is a light color, and the websafe version is hex **CCCCCC**. A complement of this color would be **BECFCF**, and the grayscale version is **C3C3C3**.

A 20% lighter version of the original color is **FFF6F6**, and **998989** is the 20% darker color. If you saturate the color by 10%, you get **CFA9A9**, and if you desaturate by 10%, it is **CFD3D3**.

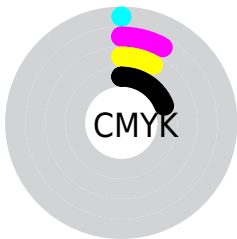
Distribution



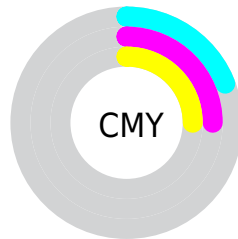
- Red (81%)
- Green (75%)
- Blue (75%)



- Red (81%)
- Yellow (75%)
- Blue (75%)



- Cyan (0%)
- Magenta (8%)
- Yellow (8%)
- Black (19%)



- Cyan (19%)
- Magenta (25%)
- Yellow (25%)

Brightness & Saturation Gradients

These gradients show how the Hex color CFBEBE changes by changing the brightness by 10 percent. The first figure shows a shift by +10% for each color and the second figure -10%.

Similar to the brightness gradients but the following saturation gradients show a change of the Hex color CFBEBE by changing the saturation by 10% instead.

 CFBEBE

 CFBEBE

FFFFFF

 B3A3A3

 FFF6F6

 998989

 7F6F6F

 665757

 4D4040

 372A2A

 211515

 000000

 CFBEBE

 CFBEBE

 CFA9A9

 CFD3D3

 CF9595

 CFE7E7

 CF8080

 CFFCFC

 CF6B6B

 CFFFFFF

 CF5757

 CF4242

 CF2D2D

 CF1818

 CF0404

Harmonies

Analogous

The Analogous color harmony consists of three colors that are next to each other on the color wheel.



CDBEC4



CFBEBE



CEBFB9

Triad

The Triadic color harmony groups three colors that are evenly spaced from another and form a triangle on the color wheel.



CFBEBE



BCC4BA



BAC3CD

Complementary

The Complementary color scheme is a pair of colors which are on the opposite of each other on the color wheel.



CFBEBE



BECFCF

Split Complementary

Split-complementary colors differ from the complementary color scheme. The scheme consists of three colors, the original color and two neighbors of the complement color.



B5C5CB



CFBEBE



B6C5BF

Square

The Square scheme is like the rectangle color scheme, but the four colors are evenly spaced on the color wheel.



CFBEBE



C3C3B7



B4C5C6



C1C1CD

Rectangle

The Rectangle color scheme consists of four colors that form a rectangle on the color wheel.



CFBEBE



CBC0B7



B4C5C6



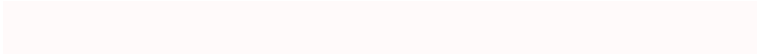
B8C4CD

Sweetspot

The Sweet Spot groups the original color and five complimentary colors.



CFBEBE



FFFAFA



CFBECF



807D7D



000000



808080

Same Dimension

The Same Dimension uses a secret algorithm to generate beautiful new colors.



CFBEBE



FFE6E6



CFC7BE



695E5E



A80000



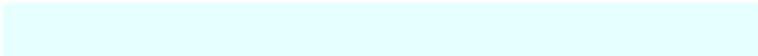
290000

Inverse Universe

The Inverse Universe completely reimagines the original color for something new.



BECFCF



E6FFFF



BEC7CF



5E6969



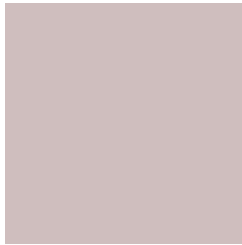
00A8A8



002929

Previews

White Background



This preview shows how the Hex color CFBEBE looks on a white background.

Color Contrast Check

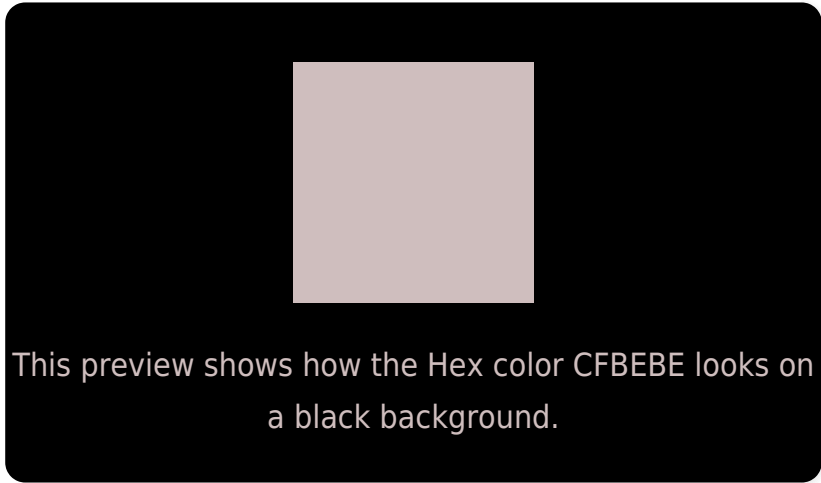
Large Text (above 18pt) WCAG AA × Fail

Any Text WCAG AA × Fail

Large Text (above 18pt) WCAG AAA × Fail

Any Text WCAG AAA × Fail

Black Background



Color Contrast Check

Large Text (above 18pt) WCAG AA ✓ Pass

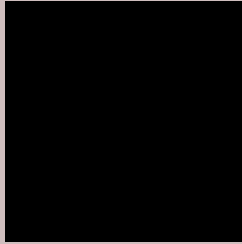
Any Text WCAG AA ✓ Pass

Large Text (above 18pt) WCAG AAA ✓ Pass

Any Text WCAG AAA ✓ Pass

If you want to check with other color combinations, try the [Color Contrast Checker](#).

Hex CFBEBE Background



This preview shows how black text looks on a background with the Hex color CFBEBE.



This preview shows how white text looks on a background with the Hex color CFBEBE.

Color Blindness Simulation

Color vision deficiency is a very complex topic, and I could not describe the different causes any better than Wikipedia does, so if you want to learn more, you should check out their [article about color blindness](#).

Dichromacy



Original Color
CFBEBE

Protanopia
C6C1C0

Deuteranopia
D6BCBE



Tritanopia
D1BCCB

Trichromacy



Original Color
CFBEBE

Protanomaly
C9C0BF

Deuteranomaly
D3BDBE

Tritanomaly
D0BDC6

Monochromacy



Original Color
CFBEBE

Achromatopsia
C3C3C3

Achromatomaly
C7C1C1

CSS Examples

Text

The CSS property to change the color of the text to Hex CFBEBE is called "color". The color property can be set on classes, ids or directly on the HTML element.

This example shows how text in the color #CFBEBE looks like.

```
.text, #text, p{  
    color:#CFBEBE  
}
```

If you want to add a text shadow in that color use the text-shadow property, you can generate a text shadow directly with our [CSS Text Shadow Generator](#).

Here you see how black text with a 4 pixel #CFBEBE colored shadow looks like.

```
.shadow{ text-shadow: 4px 4px 2px #CFBEBE
}
```

Border

The CSS property to change the border of an element to Hex CFBEBE is called "border". The border property can be set on classes, ids or directly on the HTML element.

This example shows the color as border, it can be applied via the CSS property "border" or "border-color".

```
.border, #border, table{ border:4px solid
#CFBEBE }
```

If only the border color should be changed use the property `border-color`.

```
.border{ border-color:#CFBEBE }
```

If you want to add a box shadow in that color use:

Here you see how a box with a 4 pixel #CFBEBE colored shadow looks like.

```
.boxshadow{ -moz-box-shadow:4px 4px 4px  
4px #CFBEBE; -webkit-box-shadow:4px 4px  
4px 4px #CFBEBE; box-shadow:4px 4px 4px  
4px #CFBEBE }
```

Background

The CSS property to change the background color of an element to Hex CFBEBE is called "background". The background property can be set on classes, ids or directly on the HTML element.

```
.background, #background, body{  
background:#CFBEBE }
```

If only the background color should be changed can be used:

```
.background{ background-color:#CFBEBE }
```

This example shows the color as background, it is applied via the CSS property "background".

To optimize and compress your CSS code, you can use our [online CSS compressor and optimizer](#) based on csstidy. If you want to create a linear or radial gradient as background or border, check our [CSS Gradient Generator](#).

Hey! You found this booklet interesting? Support Converting Colors with the new Membership Option!

The pro membership hides all ads, plus gives you double the colors in the color bucket, and more awesome pro features!

[Learn more, Memberships starting at \\$2.50/m!](#)

**Follow me
on Twitter!**

@ConvertingColor