

Converting Colors

Hex(CFC0C6)

Have a look what the booklet for
Hex(CFC0C6) contains.

Hex(CFC0C6)	3
<i>Conversions</i>	4
<i>Details</i>	6
<i>Harmonies</i>	11
<i>Previews</i>	23
<i>Color Blindness Simulation</i>	26
<i>CSS Examples</i>	29

Color

Hex(CFC0C6)

Conversions

Conversions Part 1

Format	Color
Hex	CFC0C6
RGB	207, 192, 198
RGB Percent	81%, 75%, 78%
CMY	0.1882, 0.2471, 0.2235
CMYK	0.00, 0.07, 0.04, 0.19
HSL	336°, 14%, 78%
HSV	336°, 7%, 81%
XYZ	54.7748, 55.0419, 61.1633
YIQ	197.1690, 7.0140, 5.0460

Conversions

Conversions Part 2

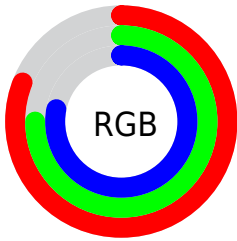
Format	Color
R _Y B	207, 192, 198
Decimal	13615302
CIE Lab	79.07, 6.32, -1.12
CIE LCh	79, 6.420, 349.994
Yxy	55.0419, 0.3204, 0.3219
Android (android.graphics.Color)	4291805382 (0xFFCFC0C6)
YUV	197.1690, 0.4097, 8.6218
Hunter-Lab	74.1902, 1.9541, 3.0538

Details

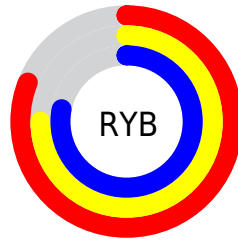
The Hex color **CFC0C6** is a light color, and the websafe version is hex **CCCCCC**. A complement of this color would be **C0CFC9**, and the grayscale version is **C5C5C5**.

A 20% lighter version of the original color is **FFF8FF**, and **998B90** is the 20% darker color. If you saturate the color by 10%, you get **CFABBA**, and if you desaturate by 10%, it is **CFD5D2**.

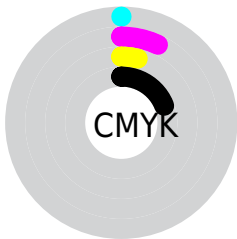
Distribution



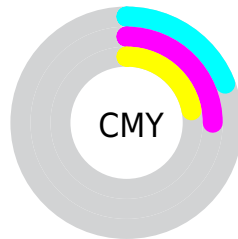
- Red (81%)
- Green (75%)
- Blue (78%)



- Red (81%)
- Yellow (75%)
- Blue (78%)



- Cyan (0%)
- Magenta (7%)
- Yellow (4%)
- Black (19%)



- Cyan (19%)
- Magenta (25%)
- Yellow (22%)

Brightness & Saturation Gradients

These gradients show how the Hex color CFC0C6 changes by changing the brightness by 10 percent. The first figure shows a shift by +10% for each color and the second figure -10%.

Similar to the brightness gradients but the following saturation gradients show a change of the Hex color CFC0C6 by changing the saturation by 10% instead.

 CFC0C6

 CFC0C6

FFFFFF

 B3A5AB

 FFF8FF

 998B90

 7F7177

 66595E

 4E4146

 372B30

 21171B

 060000

 000000

 CFC0C6

 CFC0C6

 CFABBA

 CFD5D2

 CF97AD

 CFE9DF

 CF82A1

 CFFEEB

 CF6D94

 CFFFF8

 CF5988

 CFFFFF

 CF447B

 CF2F6F

 CF1A63

 CF0656

Harmonies

Analogous

The Analogous color harmony consists of three colors that are next to each other on the color wheel.



CAC1CB



CFC0C6



D1C0C0

Triad

The Triadic color harmony groups three colors that are evenly spaced from another and form a triangle on the color wheel.



CFC0C6



C4C5B9



B7C7CD

Complementary

The Complementary color scheme is a pair of colors which are on the opposite of each other on the color wheel.



CFC0C6



C0CFC9

Split Complementary

Split-complementary colors differ from the complementary color scheme. The scheme consists of three colors, the original color and two neighbors of the complement color.



B5C7C8



CFC0C6



BEC6BC

Square

The Square scheme is like the rectangle color scheme, but the four colors are evenly spaced on the color wheel.



CFC0C6



CBC3B8



B8C7C1



BCC5CF

Rectangle

The Rectangle color scheme consists of four colors that form a rectangle on the color wheel.



CFC0C6



D1C0BC



B8C7C1



B6C7CB

Sweetspot

The Sweet Spot groups the original color and five complimentary colors.



CFC0C6



FFFAFC



C9C0CF



807D7E



000000



808080

Same Dimension

The Same Dimension uses a secret algorithm to generate beautiful new colors.



CFC0C6



FFE8F1



CFC2C0



695E62



A80043



290010

Inverse Universe

The Inverse Universe completely reimagines the original color for something new.



CFC0C6



FFE8F1



C0CECF



695E62



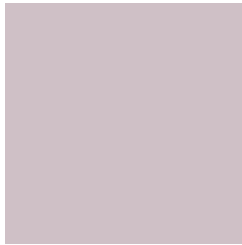
A80043



290010

Previews

White Background



This preview shows how the Hex color CFC0C6 looks on a white background.

Color Contrast Check

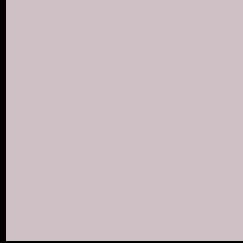
Large Text (above 18pt) WCAG AA × Fail

Any Text WCAG AA × Fail

Large Text (above 18pt) WCAG AAA × Fail

Any Text WCAG AAA × Fail

Black Background



This preview shows how the Hex color CFC0C6 looks on a black background.

Color Contrast Check

Large Text (above 18pt) WCAG AA ✓ Pass

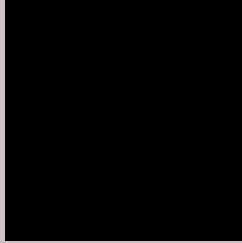
Any Text WCAG AA ✓ Pass

Large Text (above 18pt) WCAG AAA ✓ Pass

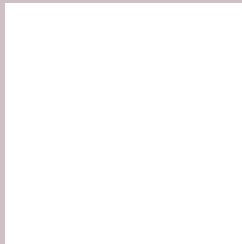
Any Text WCAG AAA ✓ Pass

If you want to check with other color combinations, try the [Color Contrast Checker](#).

Hex CFC0C6 Background



This preview shows how black text looks on a background with the Hex color CFC0C6.



This preview shows how white text looks on a background with the Hex color CFC0C6.

Color Blindness Simulation

Color vision deficiency is a very complex topic, and I could not describe the different causes any better than Wikipedia does, so if you want to learn more, you should check out their [article about color blindness](#).

Dichromacy



Trichromacy



Original Color
CFC0C6

Protanomaly
C9C2C7

Deuteranomaly
D3BFC6

Tritanomaly
D0BFCB

Monochromacy



Original Color
CFC0C6

Achromatopsia
C5C5C5

Achromatomaly
C9C3C5

CSS Examples

Text

The CSS property to change the color of the text to Hex CFC0C6 is called "color". The color property can be set on classes, ids or directly on the HTML element.

This example shows how text in the color #CFC0C6 looks like.

```
.text, #text, p{  
    color:#CFC0C6  
}
```

If you want to add a text shadow in that color use the text-shadow property, you can generate a text shadow directly with our [CSS Text Shadow Generator](#).

Here you see how black text with a 4 pixel #CFC0C6 colored shadow looks like.

```
.shadow{ text-shadow: 4px 4px 2px #CFC0C6  
}
```

Border

The CSS property to change the border of an element to Hex CFC0C6 is called "border". The border property can be set on classes, ids or directly on the HTML element.

This example shows the color as border, it can be applied via the CSS property "border" or "border-color".

```
.border, #border, table{ border:4px solid  
#CFC0C6 }
```

If only the border color should be changed use the property `border-color`.

```
.border{ border-color:#CFC0C6 }
```

If you want to add a box shadow in that color use:

Here you see how a box with a 4 pixel `#CFC0C6` colored shadow looks like.

```
.boxshadow{ -moz-box-shadow:4px 4px 4px  
4px #CFC0C6; -webkit-box-shadow:4px 4px  
4px 4px #CFC0C6; box-shadow:4px 4px 4px  
4px #CFC0C6 }
```

Background

The CSS property to change the background color of an element to Hex CFC0C6 is called "background". The background property can be set on classes, ids or directly on the HTML element.

```
.background, #background, body{  
background:#CFC0C6 }
```

If only the background color should be changed can be used:

```
.background{ background-color:#CFC0C6 }
```

This example shows the color as background, it is applied via the CSS property "background".

To optimize and compress your CSS code, you can use our [online CSS compressor and optimizer](#) based on csstidy. If you want to create a linear or radial gradient as background or border, check our [CSS Gradient Generator](#).

Hey! You found this booklet interesting? Support Converting Colors with the new Membership Option!

The pro membership hides all ads, plus gives you double the colors in the color bucket, and more awesome pro features!

[Learn more, Memberships starting at \\$2.50/m!](#)

**Follow me
on Twitter!**

@ConvertingColor