

# Converting Colors

Hex(D07D6E)

Have a look what the booklet for  
Hex(D07D6E) contains.

<b>Hex(D07D6E)</b> .....	3
<b><i>Conversions</i></b> .....	4
<b><i>Details</i></b> .....	6
<b><i>Harmonies</i></b> .....	11
<b><i>Previews</i></b> .....	23
<b><i>Color Blindness Simulation</i></b> .....	26
<b><i>CSS Examples</i></b> .....	29

# Color

**Hex(D07D6E)**

# Conversions

## Conversions Part 1

<b>Format</b>	<b>Color</b>
Hex	D07D6E
RGB	208, 125, 110
RGB Percent	82%, 49%, 43%
CMY	0.1843, 0.5098, 0.5686
CMYK	0.00, 0.40, 0.47, 0.18
HSL	9°, 51%, 62%
HSV	9°, 47%, 82%
XYZ	36.1605, 29.2029, 18.4827
YIQ	148.1070, 54.2830, 12.9310

# Conversions

## Conversions Part 2

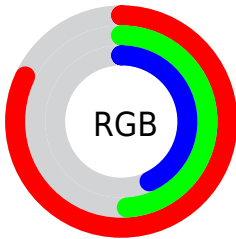
<b>Format</b>	<b>Color</b>
<b>R<sub>YB</sub></b>	208, 128, 110
Decimal	13663598
CIE <sub>Lab</sub>	60.96, 30.57, 21.95
CIE <sub>LCh</sub>	61, 37.639, 35.677
Yxy	29.2029, 0.4313, 0.3483
Android (android.graphics.Color)	4291853678 (0xFFD07D6E)
YUV	148.1070, -18.7868, 52.5262
Hunter-Lab	54.0397, 24.8732, 17.5494

# Details

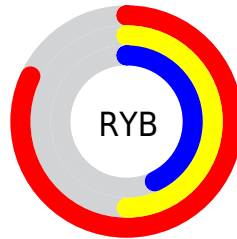
The Hex color **D07D6E** is a dark color, and the websafe version is hex **CC6666**. A complement of this color would be **6EC1D0**, and the grayscale version is **949494**.

A 20% lighter version of the original color is **FFB3A2**, and **964B3E** is the 20% darker color. If you saturate the color by 10%, you get **D06B59**, and if you desaturate by 10%, it is **D08F83**.

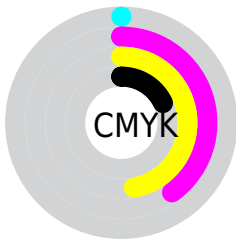
# Distribution



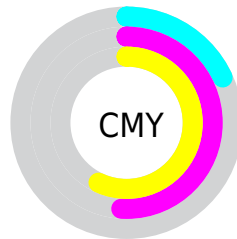
- Red (82%)
- Green (49%)
- Blue (43%)



- Red (82%)
- Yellow (50%)
- Blue (43%)



- Cyan (0%)
- Magenta (40%)
- Yellow (47%)
- Black (18%)



- Cyan (18%)
- Magenta (51%)
- Yellow (57%)

# Brightness & Saturation Gradients

These gradients show how the Hex color D07D6E changes by changing the brightness by 10 percent. The first figure shows a shift by +10% for each color and the second figure -10%.

Similar to the brightness gradients but the following saturation gradients show a change of the Hex color D07D6E by changing the saturation by 10% instead.



 D07D6E

 D07D6E

FFFFFF

 B36356

 FF3A2

 964B3E

 FFCEBD

 7A3228

 FFEBD9

 5F1B14

 FFFFF5

 440100

 2D0001

 000000

 D07D6E

 D07D6E

 D06B59

 D08F83

 D05A44

 D0A098

 D04830

 D0B2AC

 D0371B

 D0C3C1

 D02506

 D0D5D6

 D02000

 D0E7EB

 D0F8FF

 D0FFFF

# Harmonies

## Analogous

The Analogous color harmony consists of three colors that are next to each other on the color wheel.



D2788E



D07D6E



BF8857

# Triad

The Triadic color harmony groups three colors that are evenly spaced from another and form a triangle on the color wheel.



D07D6E



55A277



6B94D5

# Complementary

The Complementary color scheme is a pair of colors which are on the opposite of each other on the color wheel.



D07D6E



6EC1D0

# Split Complementary

Split-complementary colors differ from the complementary color scheme. The scheme consists of three colors, the original color and two neighbors of the complement color.



209ECF



D07D6E



13A599

# Square

The Square scheme is like the rectangle color scheme, but the four colors are evenly spaced on the color wheel.



D07D6E



7F9D5C



00A3B9



9F88C9

# Rectangle

The Rectangle color scheme consists of four colors that form a rectangle on the color wheel.



D07D6E



AD8F50



00A3B9



5698D5

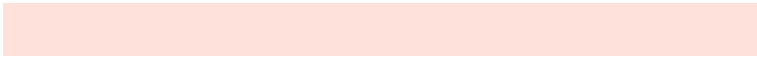


# Sweetspot

The Sweet Spot groups the original color and five complimentary colors.



D07D6E



FFE1DB



D06EC1



806D6A



000000



808080



# Same Dimension

The Same Dimension uses a secret algorithm to generate beautiful new colors.



D07D6E



FF846E



D0AE6E



69605E



A81A00



290600



# Inverse Universe

The Inverse Universe completely reimagines the original color for something new.



6EC1D0



6EE9FF



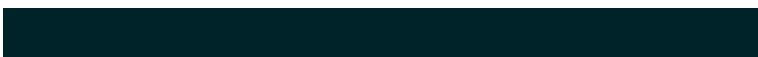
6E90D0



5E6769



008FA8



002329



# Previews

## White Background



This preview shows how the Hex color D07D6E looks on a white background.

## Color Contrast Check

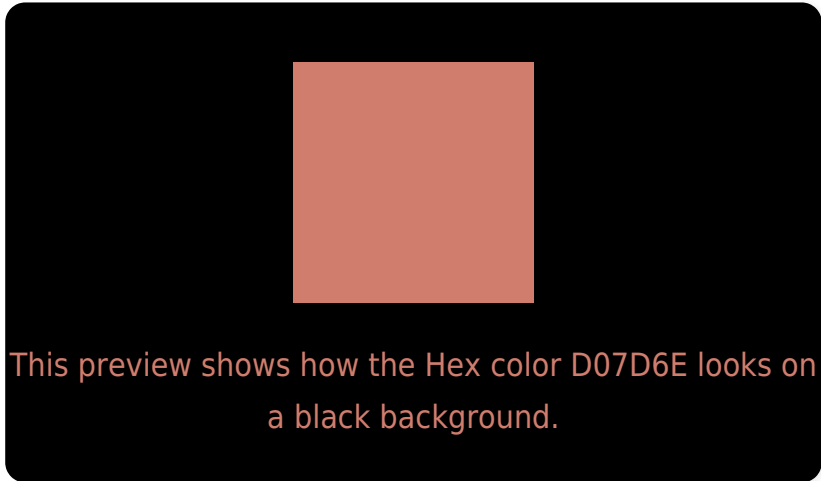
Large Text (above 18pt) WCAG AA ✓ Pass

Any Text WCAG AA × Fail

Large Text (above 18pt) WCAG AAA × Fail

Any Text WCAG AAA × Fail

# Black Background



## Color Contrast Check

Large Text (above 18pt) WCAG AA ✓ Pass

Any Text WCAG AA ✓ Pass

Large Text (above 18pt) WCAG AAA ✓ Pass

Any Text WCAG AAA × Fail

If you want to check with other color combinations, try the [Color Contrast Checker](#).



## Hex D07D6E Background



This preview shows how black text looks on a background with the Hex color D07D6E.

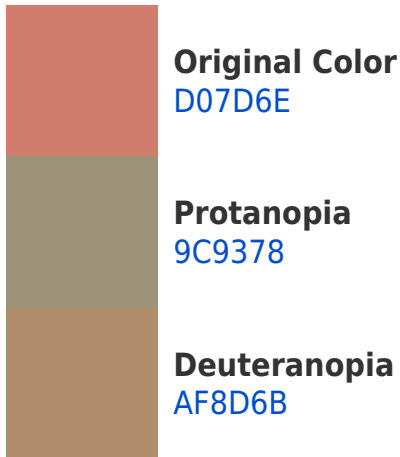



This preview shows how white text looks on a background with the Hex color D07D6E.

# Color Blindness Simulation

Color vision deficiency is a very complex topic, and I could not describe the different causes any better than Wikipedia does, so if you want to learn more, you should check out their [article about color blindness](#).

## Dichromacy





**Tritanopia**  
D27A83

# Trichromacy



**Original Color**  
D07D6E



**Protanomaly**  
AF8B74



**Deuteranomaly**  
BB876C



**Tritanomaly**  
D17B7B

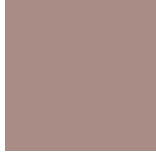
# Monochromacy



**Original Color**  
D07D6E



**Achromatopsia**  
949494



**Achromatomaly**  
AA8C86

# CSS Examples

## Text

The CSS property to change the color of the text to Hex D07D6E is called "color". The color property can be set on classes, ids or directly on the HTML element.

This example shows how text in the color #D07D6E looks like.

```
.text, #text, p{  
    color:#D07D6E  
}
```

If you want to add a text shadow in that color use the text-shadow property, you can generate a text shadow directly with our [CSS Text Shadow Generator](#).

Here you see how black text with a 4 pixel #D07D6E colored shadow looks like.

```
.shadow{ text-shadow: 4px 4px 2px #D07D6E
}
```

## Border

The CSS property to change the border of an element to Hex D07D6E is called "border". The border property can be set on classes, ids or directly on the HTML element.

This example shows the color as border, it can be applied via the CSS property "border" or "border-color".

```
.border, #border, table{ border:4px solid
#D07D6E }
```

If only the border color should be changed use the property `border-color`.

```
.border{ border-color:#D07D6E }
```

If you want to add a box shadow in that color use:

Here you see how a box with a 4 pixel #D07D6E colored shadow looks like.

```
.boxshadow{ -moz-box-shadow:4px 4px 4px  
4px #D07D6E; -webkit-box-shadow:4px 4px  
4px 4px #D07D6E; box-shadow:4px 4px 4px  
4px #D07D6E }
```

# Background

The CSS property to change the background color of an element to Hex D07D6E is called "background". The background property can be set on classes, ids or directly on the HTML element.

```
.background, #background, body{  
background:#D07D6E }
```

If only the background color should be changed can be used:

```
.background{ background-color:#D07D6E }
```

This example shows the color as background, it is applied via the CSS property "background".

To optimize and compress your CSS code, you can use our [online CSS compressor and optimizer](#) based on csstidy. If you want to create a linear or radial gradient as background or border, check our [CSS Gradient Generator](#).



Hey! You found this booklet interesting? Support Converting Colors with the new Membership Option!

The pro membership hides all ads, plus gives you double the colors in the color bucket, and more awesome pro features!

**[Learn more, Memberships starting at \\$2.50/m!](#)**

**Follow me  
on Twitter!**

@ConvertingColor