

Converting Colors

Hex(D08092)

Have a look what the booklet for
Hex(D08092) contains.

Hex(D08092)	3
<i>Conversions</i>	4
<i>Details</i>	6
<i>Harmonies</i>	11
<i>Previews</i>	23
<i>Color Blindness Simulation</i>	26
<i>CSS Examples</i>	29

Color

Hex(D08092)

Conversions

Conversions Part 1

Format	Color
Hex	D08092
RGB	208, 128, 146
RGB Percent	82%, 50%, 57%
CMY	0.1843, 0.4980, 0.4275
CMYK	0.00, 0.38, 0.30, 0.18
HSL	346°, 46%, 66%
HSV	346°, 38%, 82%
XYZ	38.9199, 30.9236, 31.1117
YIQ	153.9720, 41.9020, 22.5580

Conversions

Conversions Part 2

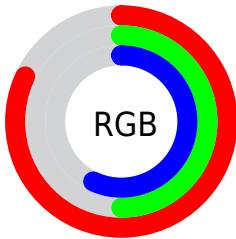
Format	Color
RYB	208, 128, 146
Decimal	13664402
CIELab	62.44, 33.17, 3.52
CIELCh	62, 33.360, 6.051
Yxy	30.9236, 0.3855, 0.3063
Android (android.graphics.Color)	4291854482 (0xFFD08092)
YUV	153.9720, -3.9302, 47.3826
Hunter-Lab	55.6090, 27.6139, 5.7552

Details

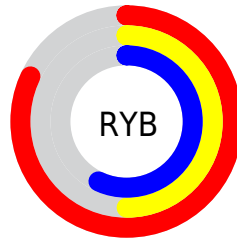
The Hex color **D08092** is a light color, and the websafe version is hex **CC9999**. A complement of this color would be **80D0BE**, and the grayscale version is **9A9A9A**.

A 20% lighter version of the original color is **FFB6C8**, and **984D60** is the 20% darker color. If you saturate the color by 10%, you get **D06B82**, and if you desaturate by 10%, it is **D095A2**.

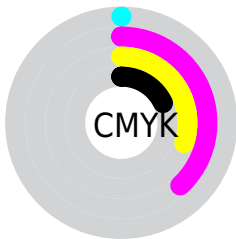
Distribution



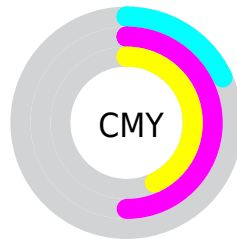
- Red (82%)
- Green (50%)
- Blue (57%)



- Red (82%)
- Yellow (50%)
- Blue (57%)



- Cyan (0%)
- Magenta (38%)
- Yellow (30%)
- Black (18%)



- Cyan (18%)
- Magenta (50%)
- Yellow (43%)

Brightness & Saturation Gradients

These gradients show how the Hex color D08092 changes by changing the brightness by 10 percent. The first figure shows a shift by +10% for each color and the second figure -10%.

Similar to the brightness gradients but the following saturation gradients show a change of the Hex color D08092 by changing the saturation by 10% instead.

 D08092

 D08092

FFFFFF

 B36678

 FFB6C8

 984D60

 FFD2E4

 7C3548

 FFEEFF

 621C32

 48011D

 310002

 020000

 000000

 D08092

 D08092

 D06B82

 D095A2

 D05672

 D0AAB2

 D04262

 D0BEC2

 D02D52

 D0D3D2

 D01841

 D0E8E3

 D00331

 D0FDF3

 D0002F

 D0FFFF

Harmonies

Analogous

The Analogous color harmony consists of three colors that are next to each other on the color wheel.



C184B0



D08092



CE8476

Triad

The Triadic color harmony groups three colors that are evenly spaced from another and form a triangle on the color wheel.



D08092



85A066



44A0CC

Complementary

The Complementary color scheme is a pair of colors which are on the opposite of each other on the color wheel.



D08092



80D0BE

Split Complementary

Split-complementary colors differ from the complementary color scheme. The scheme consists of three colors, the original color and two neighbors of the complement color.



20A6B9



D08092



61A57E

Square

The Square scheme is like the rectangle color scheme, but the four colors are evenly spaced on the color wheel.



D08092



A5975B



3AA79C



7798D2

Rectangle

The Rectangle color scheme consists of four colors that form a rectangle on the color wheel.



D08092



C58A67



3AA79C



34A3C7

Sweetspot

The Sweet Spot groups the original color and five complimentary colors.



D08092



FFE0E7



BD80D0



806E72



000000



808080

Same Dimension

The Same Dimension uses a secret algorithm to generate beautiful new colors.



D08092



FF8AA4



D09580



695E60



A80026



290009

Inverse Universe

The Inverse Universe completely reimagines the original color for something new.



D08092



FF8AA4



80BBD0



695E60



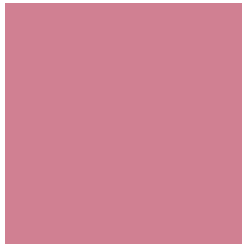
A80026



290009

Previews

White Background



This preview shows how the Hex color D08092 looks on a white background.

Color Contrast Check

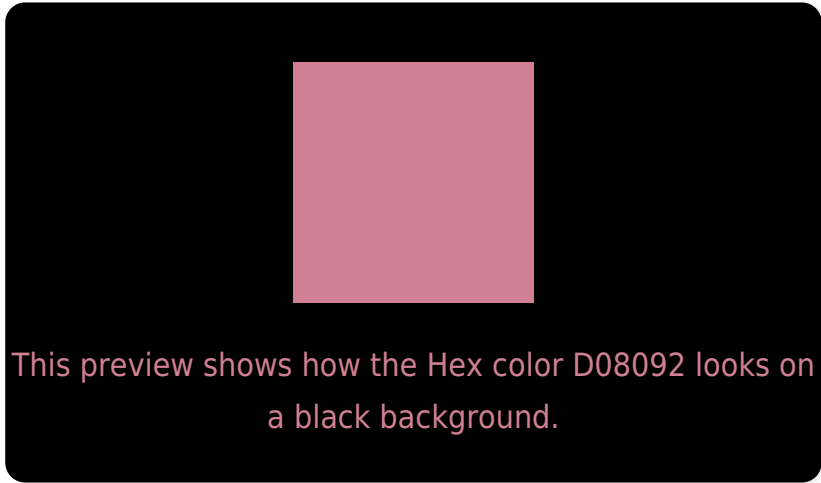
Large Text (above 18pt) WCAG AA × Fail

Any Text WCAG AA × Fail

Large Text (above 18pt) WCAG AAA × Fail

Any Text WCAG AAA × Fail

Black Background



Color Contrast Check

Large Text (above 18pt) WCAG AA ✓ Pass

Any Text WCAG AA ✓ Pass

Large Text (above 18pt) WCAG AAA ✓ Pass

Any Text WCAG AAA ✓ Pass

If you want to check with other color combinations, try the [Color Contrast Checker](#).

Hex D08092 Background



This preview shows how black text looks on a background with the Hex color D08092.

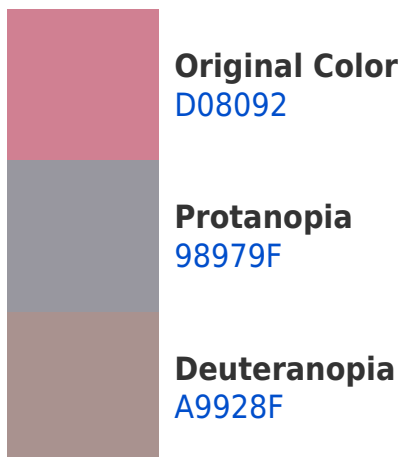


This preview shows how white text looks on a background with the Hex color D08092.

Color Blindness Simulation

Color vision deficiency is a very complex topic, and I could not describe the different causes any better than Wikipedia does, so if you want to learn more, you should check out their [article about color blindness](#).

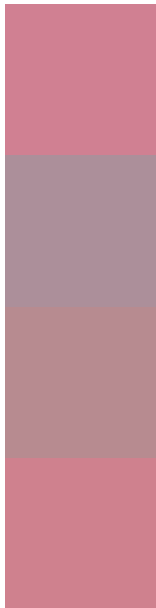
Dichromacy





Tritanopia
CF818B

Trichromacy



Original Color
D08092

Protanomaly
AC8F9A

Deuteranomaly
B78B90

Tritanomaly
CF818E

Monochromacy



Original Color
D08092

Achromatopsia
9A9A9A

Achromatomaly
AE9197

CSS Examples

Text

The CSS property to change the color of the text to Hex D08092 is called "color". The color property can be set on classes, ids or directly on the HTML element.

This example shows how text in the color #D08092 looks like.

```
.text, #text, p{  
    color:#D08092  
}
```

If you want to add a text shadow in that color use the text-shadow property, you can generate a text shadow directly with our [CSS Text Shadow Generator](#).

Here you see how black text with a 4 pixel #D08092 colored shadow looks like.

```
.shadow{ text-shadow: 4px 4px 2px #D08092
}
```

Border

The CSS property to change the border of an element to Hex D08092 is called "border". The border property can be set on classes, ids or directly on the HTML element.

This example shows the color as border, it can be applied via the CSS property "border" or "border-color".

```
.border, #border, table{ border:4px solid
#D08092 }
```

If only the border color should be changed use the property `border-color`.

```
.border{ border-color:#D08092 }
```

If you want to add a box shadow in that color use:

Here you see how a box with a 4 pixel #D08092 colored shadow looks like.

```
.boxshadow{ -moz-box-shadow:4px 4px 4px  
4px #D08092; -webkit-box-shadow:4px 4px  
4px 4px #D08092; box-shadow:4px 4px 4px  
4px #D08092 }
```

Background

The CSS property to change the background color of an element to Hex D08092 is called "background". The background property can be set on classes, ids or directly on the HTML element.

```
.background, #background, body{  
background:#D08092 }
```

If only the background color should be changed can be used:

```
.background{ background-color:#D08092 }
```

This example shows the color as background, it is applied via the CSS property "background".

To optimize and compress your CSS code, you can use our [online CSS compressor and optimizer](#) based on csstidy. If you want to create a linear or radial gradient as background or border, check our [CSS Gradient Generator](#).

Hey! You found this booklet interesting? Support Converting Colors with the new Membership Option!

The pro membership hides all ads, plus gives you double the colors in the color bucket, and more awesome pro features!

[Learn more, Memberships starting at \\$2.50/m!](#)

**Follow me
on Twitter!**

@ConvertingColor