

Converting Colors

Hex(D0837C)

Have a look what the booklet for
Hex(D0837C) contains.

Hex(D0837C)	3
<i>Conversions</i>	4
<i>Details</i>	6
<i>Harmonies</i>	11
<i>Previews</i>	23
<i>Color Blindness Simulation</i>	26
<i>CSS Examples</i>	29

Color

Hex(D0837C)

Conversions

Conversions Part 1

Format	Color
Hex	D0837C
RGB	208, 131, 124
RGB Percent	82%, 51%, 49%
CMY	0.1843, 0.4863, 0.5137
CMYK	0.00, 0.37, 0.40, 0.18
HSL	5°, 47%, 65%
HSV	5°, 40%, 82%
XYZ	37.7668, 31.0977, 23.0807
YIQ	153.2250, 48.1390, 14.1470

Conversions

Conversions Part 2

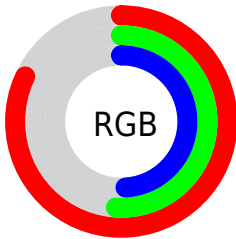
Format	Color
R _{YB}	208, 132, 124
Decimal	13665148
CIE Lab	62.59, 28.84, 16.25
CIE LCh	63, 33.100, 29.401
Yxy	31.0977, 0.4108, 0.3382
Android (android.graphics.Color)	4291855228 (0xFFD0837C)
YUV	153.2250, -14.4079, 48.0377
Hunter-Lab	55.7653, 23.2989, 14.4962

Details

The Hex color **D0837C** is a light color, and the websafe version is hex **CC6666**. A complement of this color would be **7CC9D0**, and the grayscale version is **999999**.

A 20% lighter version of the original color is **FFB9B1**, and **97504B** is the 20% darker color. If you saturate the color by 10%, you get **D07067**, and if you desaturate by 10%, it is **D09691**.

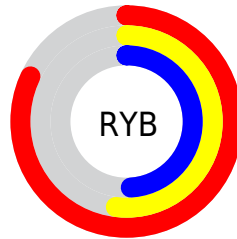
Distribution



Red (82%)

Green (51%)

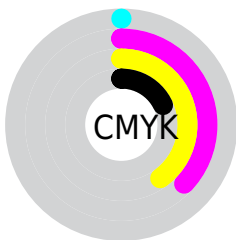
Blue (49%)



Red (82%)

Yellow (52%)

Blue (49%)

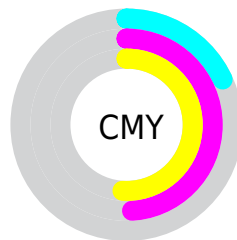


Cyan (0%)

Magenta (37%)

Yellow (40%)

Black (18%)



Cyan (18%)

Magenta (49%)

Yellow (51%)

Brightness & Saturation Gradients

These gradients show how the Hex color D0837C changes by changing the brightness by 10 percent. The first figure shows a shift by +10% for each color and the second figure -10%.

Similar to the brightness gradients but the following saturation gradients show a change of the Hex color D0837C by changing the saturation by 10% instead.

 D0837C

 D0837C

FFFFFF

 B36963

 FFB9B1

 97504B

 FFD5CC

 7B3835

 FFF1E8

 60211F

 460808

 2E0000

 000000

 D0837C

 D0837C

 D07067

 D09691

 D05D52

 D0A9A6

 D04A3E

 D0BCBA

 D03729

 D0CFCF

 D02414

 D0E2E4

 D01100

 D0F5F9

 D0FFFF

Harmonies

Analogous

The Analogous color harmony consists of three colors that are next to each other on the color wheel.



CE8199



D0837C



C38B66

Triad

The Triadic color harmony groups three colors that are evenly spaced from another and form a triangle on the color wheel.



D0837C



6AA479



6D9AD2

Complementary

The Complementary color scheme is a pair of colors which are on the opposite of each other on the color wheel.



D0837C



7CC9D0

Split Complementary

Split-complementary colors differ from the complementary color scheme. The scheme consists of three colors, the original color and two neighbors of the complement color.



3CA2C9



D0837C



44A796

Square

The Square scheme is like the rectangle color scheme, but the four colors are evenly spaced on the color wheel.



D0837C



8D9E63



25A6B3



9A90CB

Rectangle

The Rectangle color scheme consists of four colors that form a rectangle on the color wheel.



D0837C



B4925E



25A6B3



5C9DD1

Sweetspot

The Sweet Spot groups the original color and five complimentary colors.



D0837C



FFE3E0



D07CC9



806F6E



000000



808080

Same Dimension

The Same Dimension uses a secret algorithm to generate beautiful new colors.



D0837C



FF8F85



D0AC7C



695F5E



A80E00



290300

Inverse Universe

The Inverse Universe completely reimagines the original color for something new.



7CC9D0



85F5FF



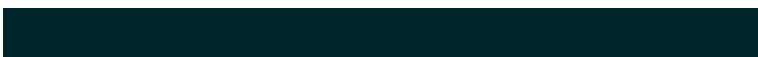
7C9FD0



5E6869



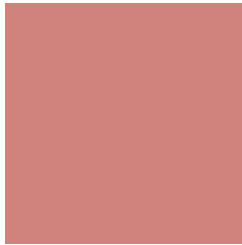
009AA8



002529

Previews

White Background



This preview shows how the Hex color D0837C looks on a white background.

Color Contrast Check

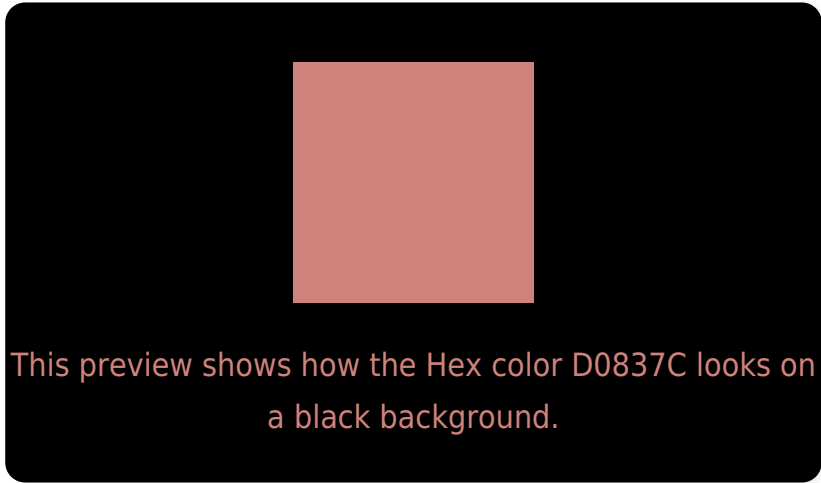
Large Text (above 18pt) WCAG AA × Fail

Any Text WCAG AA × Fail

Large Text (above 18pt) WCAG AAA × Fail

Any Text WCAG AAA × Fail

Black Background



Color Contrast Check

Large Text (above 18pt) WCAG AA ✓ Pass

Any Text WCAG AA ✓ Pass

Large Text (above 18pt) WCAG AAA ✓ Pass

Any Text WCAG AAA ✓ Pass

If you want to check with other color combinations, try the [Color Contrast Checker](#).

Hex D0837C Background



This preview shows how black text looks on a background with the Hex color D0837C.

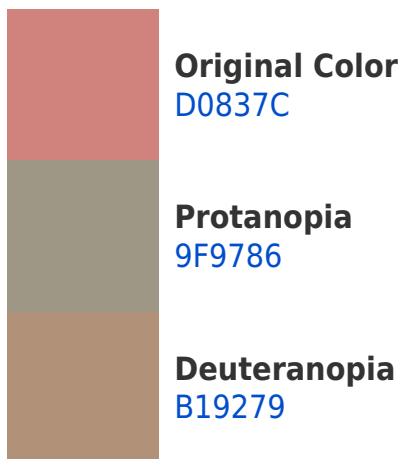


This preview shows how white text looks on a background with the Hex color D0837C.

Color Blindness Simulation

Color vision deficiency is a very complex topic, and I could not describe the different causes any better than Wikipedia does, so if you want to learn more, you should check out their [article about color blindness](#).

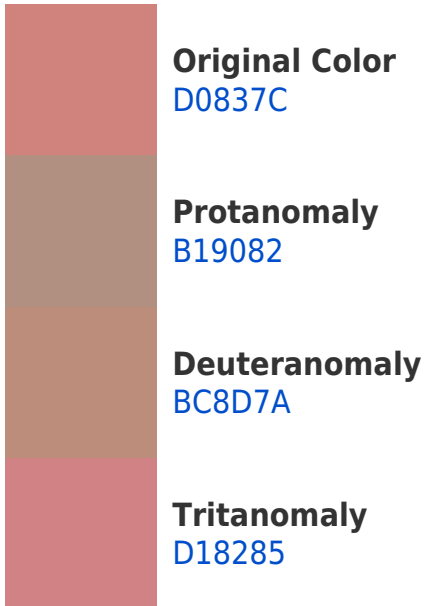
Dichromacy





Tritanopia
D1818A

Trichromacy



Monochromacy



CSS Examples

Text

The CSS property to change the color of the text to Hex D0837C is called "color". The color property can be set on classes, ids or directly on the HTML element.

This example shows how text in the color #D0837C looks like.

```
.text, #text, p{  
    color:#D0837C  
}
```

If you want to add a text shadow in that color use the text-shadow property, you can generate a text shadow directly with our [CSS Text Shadow Generator](#).

Here you see how black text with a 4 pixel #D0837C colored shadow looks like.

```
.shadow{ text-shadow: 4px 4px 2px #D0837C  
}
```

Border

The CSS property to change the border of an element to Hex D0837C is called "border". The border property can be set on classes, ids or directly on the HTML element.

This example shows the color as border, it can be applied via the CSS property "border" or "border-color".

```
.border, #border, table{ border:4px solid  
#D0837C }
```

If only the border color should be changed use the property `border-color`.

```
.border{ border-color:#D0837C }
```

If you want to add a box shadow in that color use:

Here you see how a box with a 4 pixel #D0837C colored shadow looks like.

```
.boxshadow{ -moz-box-shadow:4px 4px 4px  
4px #D0837C; -webkit-box-shadow:4px 4px  
4px 4px #D0837C; box-shadow:4px 4px 4px  
4px #D0837C }
```

Background

The CSS property to change the background color of an element to Hex D0837C is called "background". The background property can be set on classes, ids or directly on the HTML element.

```
.background, #background, body{  
background:#D0837C }
```

If only the background color should be changed can be used:

```
.background{ background-color:#D0837C }
```

This example shows the color as background, it is applied via the CSS property "background".

To optimize and compress your CSS code, you can use our [online CSS compressor and optimizer](#) based on csstidy. If you want to create a linear or radial gradient as background or border, check our [CSS Gradient Generator](#).

Hey! You found this booklet interesting? Support Converting Colors with the new Membership Option!

The pro membership hides all ads, plus gives you double the colors in the color bucket, and more awesome pro features!

[Learn more, Memberships starting at \\$2.50/m!](#)

**Follow me
on Twitter!**

@ConvertingColor