

# Converting Colors

Hex(D08380)

Have a look what the booklet for  
Hex(D08380) contains.

<b>Hex(D08380)</b> .....	3
<b><i>Conversions</i></b> .....	4
<b><i>Details</i></b> .....	6
<b><i>Harmonies</i></b> .....	11
<b><i>Previews</i></b> .....	23
<b><i>Color Blindness Simulation</i></b> .....	26
<b><i>CSS Examples</i></b> .....	29

# **Color**

**Hex(D08380)**

# Conversions

## Conversions Part 1

Format	Color
Hex	D08380
RGB	208, 131, 128
RGB Percent	82%, 51%, 50%
CMY	0.1843, 0.4863, 0.4980
CMYK	0.00, 0.37, 0.38, 0.18
HSL	2°, 46%, 66%
HSV	2°, 38%, 82%
XYZ	38.0250, 31.2010, 24.4403
YIQ	153.6810, 46.8550, 15.3910

# Conversions

## Conversions Part 2

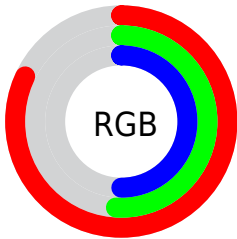
Format	Color
R <sub>Y</sub> B	208, 131, 128
Decimal	13665152
CIE Lab	62.68, 29.30, 14.10
CIE LCh	63, 32.516, 25.703
Yxy	31.2010, 0.4060, 0.3331
Android (android.graphics.Color)	4291855232 (0xFFD08380)
YUV	153.6810, -12.6607, 47.6378
Hunter-Lab	55.8579, 23.7619, 13.1585

# Details

The Hex color **D08380** is a light color, and the websafe version is hex **CC9999**. A complement of this color would be **80CDD0**, and the grayscale version is **9A9A9A**.

A 20% lighter version of the original color is **FFB9B5**, and **97504F** is the 20% darker color. If you saturate the color by 10%, you get **D06F6B**, and if you desaturate by 10%, it is **D09795**.

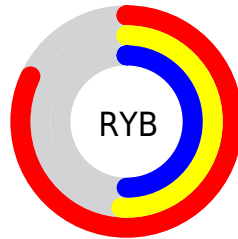
# Distribution



Red (82%)

Green (51%)

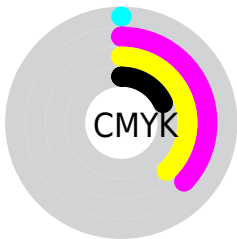
Blue (50%)



Red (82%)

Yellow (51%)

Blue (50%)

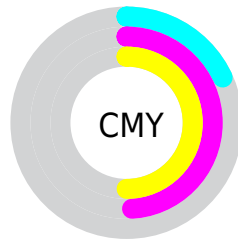


Cyan (0%)

Magenta (37%)

Yellow (38%)

Black (18%)



Cyan (18%)

Magenta (49%)

Yellow (50%)

# Brightness & Saturation Gradients

These gradients show how the Hex color D08380 changes by changing the brightness by 10 percent. The first figure shows a shift by +10% for each color and the second figure -10%.

Similar to the brightness gradients but the following saturation gradients show a change of the Hex color D08380 by changing the saturation by 10% instead.



 D08380

 D08380

FFFFFF

 B36967

 FFB9B5

 97504F

 FFD5D0

 7C3838

 FFF1ED

 612123

 47070D

 2F0000

 000000

 D08380

 D08380

 D06F6B

 D09795

 D05B56

 D0ABAA

 D04742

 D0BFBE

 D0332D

 D0D3D3

 D01F18

 D0E7E8

 D00B03

 D0FBFD

 D00800

 D0FFFF

# Harmonies

## Analogous

The Analogous color harmony consists of three colors that are next to each other on the color wheel.



CC829D



D08380



C58A69

# Triad

The Triadic color harmony groups three colors that are evenly spaced from another and form a triangle on the color wheel.



D08380



70A476



689CD1

# Complementary

The Complementary color scheme is a pair of colors which are on the opposite of each other on the color wheel.



D08380



80CDD0

# Split Complementary

Split-complementary colors differ from the complementary color scheme. The scheme consists of three colors, the original color and two neighbors of the complement color.



3AA3C6



D08380



4BA792

# Square

The Square scheme is like the rectangle color scheme, but the four colors are evenly spaced on the color wheel.



D08380



919D63



2CA7B0



9592CC

# Rectangle

The Rectangle color scheme consists of four colors that form a rectangle on the color wheel.



D08380



B79160



2CA7B0



589ECF



# Sweetspot

The Sweet Spot groups the original color and five complimentary colors.



D08380



FFE2E0



D080CD



806E6E



000000



808080



# Same Dimension

The Same Dimension uses a secret algorithm to generate beautiful new colors.



D08380



FF8E8A



D0AB80



695E5E



A80600



290200



# Inverse Universe

The Inverse Universe completely reimagines the original color for something new.



80CDD0



8AFBFF



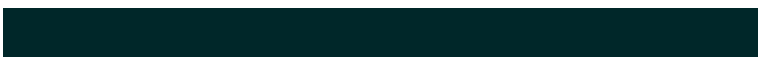
80A5D0



5E6869



00A2A8

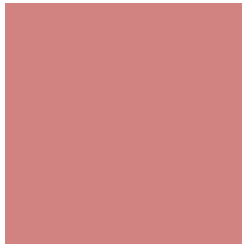


002729



# Previews

## White Background



This preview shows how the Hex color D08380 looks on a white background.

## Color Contrast Check

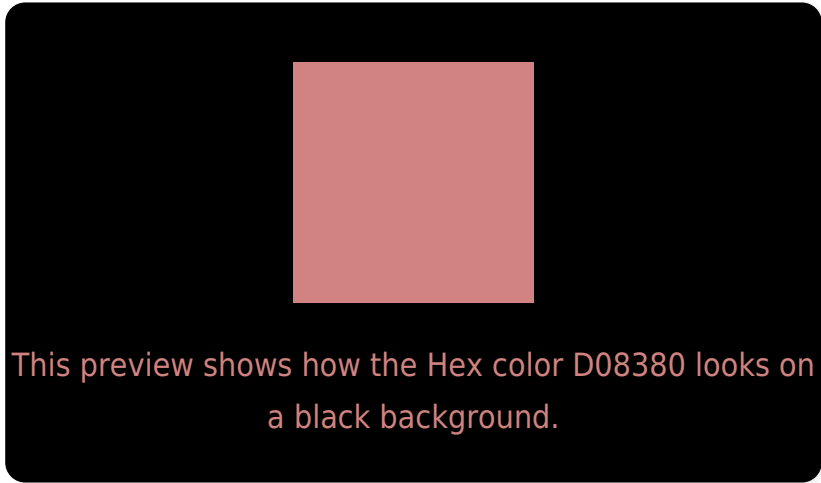
Large Text (above 18pt) WCAG AA × Fail

Any Text WCAG AA × Fail

Large Text (above 18pt) WCAG AAA × Fail

Any Text WCAG AAA × Fail

# Black Background



## Color Contrast Check

Large Text (above 18pt) WCAG AA ✓ Pass

Any Text WCAG AA ✓ Pass

Large Text (above 18pt) WCAG AAA ✓ Pass

Any Text WCAG AAA ✓ Pass

If you want to check with other color combinations, try the [Color Contrast Checker](#).



## Hex D08380 Background



This preview shows how black text looks on a background with the Hex color D08380.




This preview shows how white text looks on a background with the Hex color D08380.

# Color Blindness Simulation

Color vision deficiency is a very complex topic, and I could not describe the different causes any better than Wikipedia does, so if you want to learn more, you should check out their [article about color blindness](#).

## Dichromacy





**Tritanopia**  
D1818B

# Trichromacy



**Original Color**  
D08380

**Protanomaly**  
B09086

**Deuteranomaly**  
BC8D7E

**Tritanomaly**  
D18287

# Monochromacy



**Original Color**  
D08380

**Achromatopsia**  
9A9A9A

**Achromatomaly**  
AE9291

# CSS Examples

## Text

The CSS property to change the color of the text to Hex D08380 is called "color". The color property can be set on classes, ids or directly on the HTML element.

This example shows how text in the color #D08380 looks like.

```
.text, #text, p{  
    color:#D08380  
}
```

If you want to add a text shadow in that color use the text-shadow property, you can generate a text shadow directly with our [CSS Text Shadow Generator](#).

Here you see how black text with a 4 pixel #D08380 colored shadow looks like.

```
.shadow{ text-shadow: 4px 4px 2px #D08380
}
```

## Border

The CSS property to change the border of an element to Hex D08380 is called "border". The border property can be set on classes, ids or directly on the HTML element.

This example shows the color as border, it can be applied via the CSS property "border" or "border-color".

```
.border, #border, table{ border:4px solid
#D08380 }
```

If only the border color should be changed use the property `border-color`.

```
.border{ border-color:#D08380 }
```

If you want to add a box shadow in that color use:

Here you see how a box with a 4 pixel #D08380 colored shadow looks like.

```
.boxshadow{ -moz-box-shadow:4px 4px 4px  
4px #D08380; -webkit-box-shadow:4px 4px  
4px 4px #D08380; box-shadow:4px 4px 4px  
4px #D08380 }
```

# Background

The CSS property to change the background color of an element to Hex D08380 is called "background". The background property can be set on classes, ids or directly on the HTML element.

```
.background, #background, body{  
background:#D08380 }
```

If only the background color should be changed can be used:

```
.background{ background-color:#D08380 }
```

This example shows the color as background, it is applied via the CSS property "background".

To optimize and compress your CSS code, you can use our [online CSS compressor and optimizer](#) based on csstidy. If you want to create a linear or radial gradient as background or border, check our [CSS Gradient Generator](#).



Hey! You found this booklet interesting? Support Converting Colors with the new Membership Option!

The pro membership hides all ads, plus gives you double the colors in the color bucket, and more awesome pro features!

**[Learn more, Memberships starting at \\$2.50/m!](#)**

**Follow me  
on Twitter!**

@ConvertingColor