

# Converting Colors

Hex(D09590)

Have a look what the booklet for  
Hex(D09590) contains.

<b>Hex(D09590)</b> .....	3
<b><i>Conversions</i></b> .....	4
<b><i>Details</i></b> .....	6
<b><i>Harmonies</i></b> .....	11
<b><i>Previews</i></b> .....	23
<b><i>Color Blindness Simulation</i></b> .....	26
<b><i>CSS Examples</i></b> .....	29

# **Color**

**Hex(D09590)**

# Conversions

## Conversions Part 1

<b>Format</b>	<b>Color</b>
Hex	D09590
RGB	208, 149, 144
RGB Percent	82%, 58%, 56%
CMY	0.1843, 0.4157, 0.4353
CMYK	0.00, 0.28, 0.31, 0.18
HSL	5°, 41%, 69%
HSV	5°, 31%, 82%
XYZ	41.7939, 36.9184, 31.3087
YIQ	166.0710, 36.7690, 10.9530

# Conversions

## Conversions Part 2

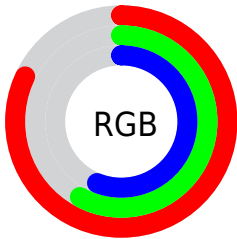
Format	Color
R <sub>Y</sub> B	208, 149, 144
Decimal	13669776
CIE Lab	67.22, 21.53, 11.47
CIE LCh	67, 24.390, 28.047
Yxy	36.9184, 0.3799, 0.3356
Android (android.graphics.Color)	4291859856 (0xFFD09590)
YUV	166.0710, -10.8810, 36.7717
Hunter-Lab	60.7605, 16.4497, 11.9813

# Details

The Hex color **D09590** is a light color, and the websafe version is hex **CC9999**. A complement of this color would be **90CBD0**, and the grayscale version is **A6A6A6**.

A 20% lighter version of the original color is **FFCBC6**, and **98625E** is the 20% darker color. If you saturate the color by 10%, you get **D0827B**, and if you desaturate by 10%, it is **D0A8A5**.

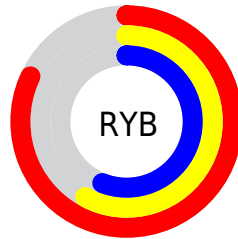
# Distribution



Red (82%)

Green (58%)

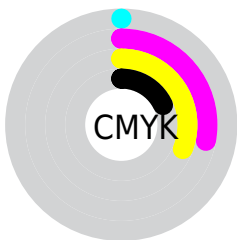
Blue (56%)



Red (82%)

Yellow (58%)

Blue (56%)

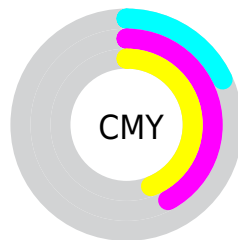


Cyan (0%)

Magenta (28%)

Yellow (31%)

Black (18%)



Cyan (18%)

Magenta (42%)

Yellow (44%)

# Brightness & Saturation Gradients

These gradients show how the Hex color D09590 changes by changing the brightness by 10 percent. The first figure shows a shift by +10% for each color and the second figure -10%.

Similar to the brightness gradients but the following saturation gradients show a change of the Hex color D09590 by changing the saturation by 10% instead.



 D09590

 D09590

FFFFFF

 B47B76

 FFCBC6

 98625E

 FFE8E2

 7D4A46

FFFFFFE

 633230

 491C1B

 320600

 150000

 000000

 D09590

 D09590

 D0827B

 D0A8A5

 D06F66

 D0BBBA

 D05B52

 D0CFCE

 D0483D

 D0E2E3

 D03528

 D0F5F8

 D02213

 D0FFFF

 D01000

# Harmonies

## Analogous

The Analogous color harmony consists of three colors that are next to each other on the color wheel.



CD94A6



D09590



C79A7F

# Triad

The Triadic color harmony groups three colors that are evenly spaced from another and form a triangle on the color wheel.



D09590



85AE8C



87A6CF

# Complementary

The Complementary color scheme is a pair of colors which are on the opposite of each other on the color wheel.



D09590



90CBD0

# Split Complementary

Split-complementary colors differ from the complementary color scheme. The scheme consists of three colors, the original color and two neighbors of the complement color.



6CACC8



D09590



6EB0A1

# Square

The Square scheme is like the rectangle color scheme, but the four colors are evenly spaced on the color wheel.



D09590



9EA97D



63AFB7



A59ECA

# Rectangle

The Rectangle color scheme consists of four colors that form a rectangle on the color wheel.



D09590



BC9F79



63AFB7



7DA8CE

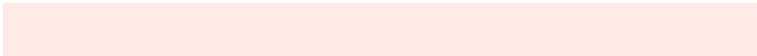


# Sweetspot

The Sweet Spot groups the original color and five complimentary colors.



D09590



FFEAE8



D090CC



807371



000000



808080



# Same Dimension

The Same Dimension uses a secret algorithm to generate beautiful new colors.



D09590



FFA8A1



D0B490



695F5E



A80D00



290300



# Inverse Universe

The Inverse Universe completely reimagines the original color for something new.



90CBD0



A1F8FF



90ACD0



5E6869



009BA8

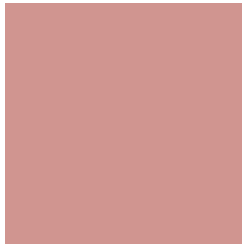


002629



# Previews

## White Background



This preview shows how the Hex color D09590 looks on a white background.

## Color Contrast Check

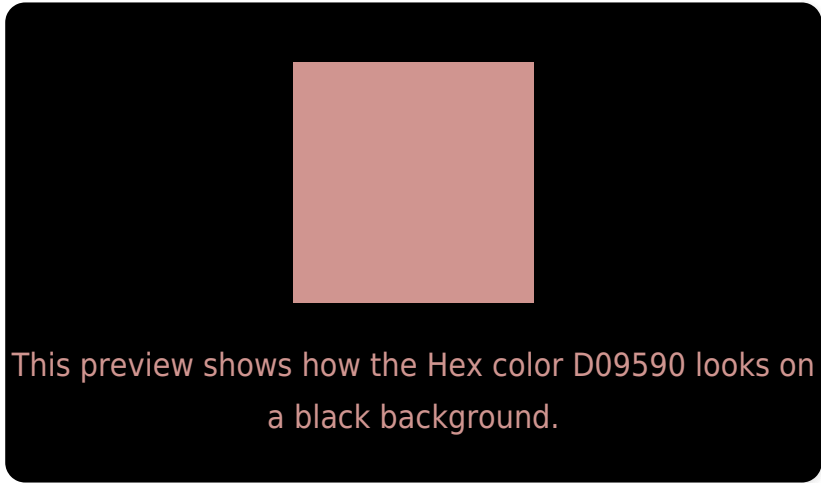
Large Text (above 18pt) WCAG AA × Fail

Any Text WCAG AA × Fail

Large Text (above 18pt) WCAG AAA × Fail

Any Text WCAG AAA × Fail

# Black Background



## Color Contrast Check

Large Text (above 18pt) WCAG AA ✓ Pass

Any Text WCAG AA ✓ Pass

Large Text (above 18pt) WCAG AAA ✓ Pass

Any Text WCAG AAA ✓ Pass

If you want to check with other color combinations, try the [Color Contrast Checker](#).



## Hex D09590 Background



This preview shows how black text looks on a background with the Hex color D09590.

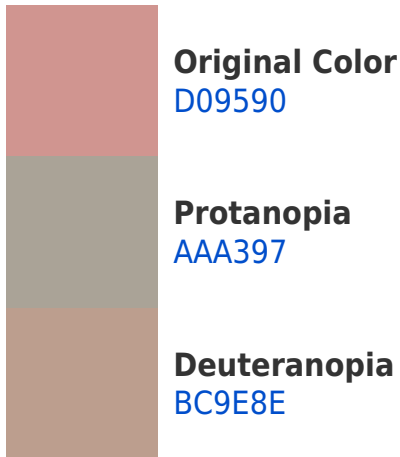



This preview shows how white text looks on a background with the Hex color D09590.

# Color Blindness Simulation

Color vision deficiency is a very complex topic, and I could not describe the different causes any better than Wikipedia does, so if you want to learn more, you should check out their [article about color blindness](#).

## Dichromacy





**Tritanopia**  
D1939E

# Trichromacy



**Original Color**  
D09590

**Protanomaly**  
B89E94

**Deuteranomaly**  
C39B8F

**Tritanomaly**  
D19499

# Monochromacy



**Original Color**  
D09590

**Achromatopsia**  
A6A6A6

**Achromatomaly**  
B5A09E

# CSS Examples

## Text

The CSS property to change the color of the text to Hex D09590 is called "color". The color property can be set on classes, ids or directly on the HTML element.

This example shows how text in the color #D09590 looks like.

```
.text, #text, p{  
    color:#D09590  
}
```

If you want to add a text shadow in that color use the text-shadow property, you can generate a text shadow directly with our [CSS Text Shadow Generator](#).

Here you see how black text with a 4 pixel #D09590 colored shadow looks like.

```
.shadow{ text-shadow: 4px 4px 2px #D09590
}
```

## Border

The CSS property to change the border of an element to Hex D09590 is called "border". The border property can be set on classes, ids or directly on the HTML element.

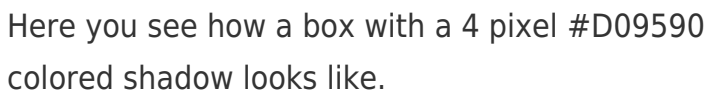
This example shows the color as border, it can be applied via the CSS property "border" or "border-color".

```
.border, #border, table{ border:4px solid
#D09590 }
```

If only the border color should be changed use the property `border-color`.

```
.border{ border-color:#D09590 }
```

If you want to add a box shadow in that color use:



Here you see how a box with a 4 pixel #D09590 colored shadow looks like.

```
.boxshadow{ -moz-box-shadow:4px 4px 4px  
4px #D09590; -webkit-box-shadow:4px 4px  
4px 4px #D09590; box-shadow:4px 4px 4px  
4px #D09590 }
```

# Background

The CSS property to change the background color of an element to Hex D09590 is called "background". The background property can be set on classes, ids or directly on the HTML element.

```
.background, #background, body{  
background:#D09590 }
```

If only the background color should be changed can be used:

```
.background{ background-color:#D09590 }
```

This example shows the color as background, it is applied via the CSS property "background".

To optimize and compress your CSS code, you can use our [online CSS compressor and optimizer](#) based on csstidy. If you want to create a linear or radial gradient as background or border, check our [CSS Gradient Generator](#).



Hey! You found this booklet interesting? Support Converting Colors with the new Membership Option!

The pro membership hides all ads, plus gives you double the colors in the color bucket, and more awesome pro features!

**[Learn more, Memberships starting at \\$2.50/m!](#)**

**Follow me  
on Twitter!**

@ConvertingColor