

Converting Colors

Hex(D0978C)

Have a look what the booklet for
Hex(D0978C) contains.

Hex(D0978C)	3
<i>Conversions</i>	4
<i>Details</i>	6
<i>Harmonies</i>	11
<i>Previews</i>	23
<i>Color Blindness Simulation</i>	26
<i>CSS Examples</i>	29

Color

Hex(D0978C)

Conversions

Conversions Part 1

Format	Color
Hex	D0978C
RGB	208, 151, 140
RGB Percent	82%, 59%, 55%
CMY	0.1843, 0.4078, 0.4510
CMYK	0.00, 0.27, 0.33, 0.18
HSL	10°, 42%, 68%
HSV	10°, 33%, 82%
XYZ	41.8127, 37.4366, 29.8332
YIQ	166.7890, 37.5030, 8.6630

Conversions

Conversions Part 2

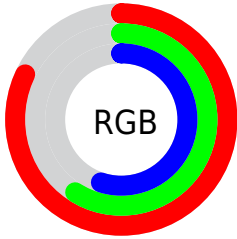
Format	Color
R _Y B	208, 153, 140
Decimal	13670284
CIE Lab	67.60, 19.91, 14.24
CIE LCh	68, 24.482, 35.577
Yxy	37.4366, 0.3833, 0.3432
Android (android.graphics.Color)	4291860364 (0xFFD0978C)
YUV	166.7890, -13.2070, 36.1420
Hunter-Lab	61.1854, 14.9081, 13.9208

Details

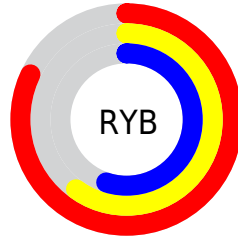
The Hex color **D0978C** is a light color, and the websafe version is hex **CC9999**. A complement of this color would be **8CC5D0**, and the grayscale version is **A7A7A7**.

A 20% lighter version of the original color is **FFCDC2**, and **98645A** is the 20% darker color. If you saturate the color by 10%, you get **D08677**, and if you desaturate by 10%, it is **D0A8A1**.

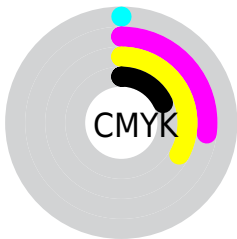
Distribution



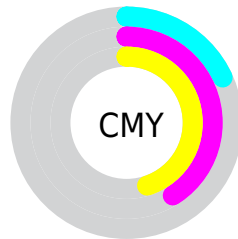
- Red (82%)
- Green (59%)
- Blue (55%)



- Red (82%)
- Yellow (60%)
- Blue (55%)



- Cyan (0%)
- Magenta (27%)
- Yellow (33%)
- Black (18%)



- Cyan (18%)
- Magenta (41%)
- Yellow (45%)

Brightness & Saturation Gradients

These gradients show how the Hex color D0978C changes by changing the brightness by 10 percent. The first figure shows a shift by +10% for each color and the second figure -10%.

Similar to the brightness gradients but the following saturation gradients show a change of the Hex color D0978C by changing the saturation by 10% instead.

 D0978C

 D0978C

FFFFFF

 B47D72

 FFCDC2

 98645A

 FFEADD

 7D4C42

 FFFFFA

 63342C

 491E18

 320800

 150000

 000000

 D0978C

 D0978C

 D08677

 D0A8A1

 D07462

 D0BAB6

 D0634E

 D0CBCA

 D05139

 D0DDDF

 D04024

 D0EEF4

 D02E0F

 D0FFFF

 D02200

Harmonies

Analogous

The Analogous color harmony consists of three colors that are next to each other on the color wheel.



D195A1



D0978C



C49D7D

Triad

The Triadic color harmony groups three colors that are evenly spaced from another and form a triangle on the color wheel.



D0978C



7FAF92



8FA5D0

Complementary

The Complementary color scheme is a pair of colors which are on the opposite of each other on the color wheel.



D0978C



8CC5D0

Split Complementary

Split-complementary colors differ from the complementary color scheme. The scheme consists of three colors, the original color and two neighbors of the complement color.



73ACCC



D0978C



6BB1A8

Square

The Square scheme is like the rectangle color scheme, but the four colors are evenly spaced on the color wheel.



D0978C



98AB80



64B0BE



AD9EC9

Rectangle

The Rectangle color scheme consists of four colors that form a rectangle on the color wheel.



D0978C



B8A279



64B0BE



85A8D0

Sweetspot

The Sweet Spot groups the original color and five complimentary colors.



D0978C



FFEAE6



D08CC6



807370



000000



808080

Same Dimension

The Same Dimension uses a secret algorithm to generate beautiful new colors.



D0978C



FFAC9C



D0B88C



69605E



A81B00



290700

Inverse Universe

The Inverse Universe completely reimagines the original color for something new.



8CC5D0



9CEFFF



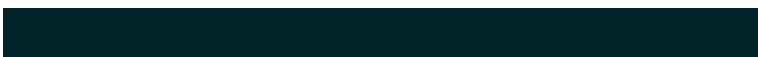
8CA4D0



5E6769



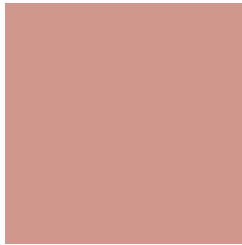
008DA8



002229

Previews

White Background



This preview shows how the Hex color D0978C looks on a white background.

Color Contrast Check

Large Text (above 18pt) WCAG AA × Fail

Any Text WCAG AA × Fail

Large Text (above 18pt) WCAG AAA × Fail

Any Text WCAG AAA × Fail

Black Background



This preview shows how the Hex color D0978C looks on a black background.

Color Contrast Check

Large Text (above 18pt) WCAG AA ✓ Pass

Any Text WCAG AA ✓ Pass

Large Text (above 18pt) WCAG AAA ✓ Pass

Any Text WCAG AAA ✓ Pass

If you want to check with other color combinations, try the [Color Contrast Checker](#).

Hex D0978C Background



This preview shows how black text looks on a background with the Hex color D0978C.



This preview shows how white text looks on a background with the Hex color D0978C.

Color Blindness Simulation

Color vision deficiency is a very complex topic, and I could not describe the different causes any better than Wikipedia does, so if you want to learn more, you should check out their [article about color blindness](#).


Dichromacy



Original Color
D0978C

Protanopia
ACA493

Deuteranopia
BE9F8B



Tritanopia
D2949F

Trichromacy



Original Color
D0978C

Protanomaly
B99F90

Deuteranomaly
C59C8B

Tritanomaly
D19598

Monochromacy



Original Color
D0978C

Achromatopsia
A7A7A7

Achromatomaly
B6A19D

CSS Examples

Text

The CSS property to change the color of the text to Hex D0978C is called "color". The color property can be set on classes, ids or directly on the HTML element.

This example shows how text in the color #D0978C looks like.

```
.text, #text, p{  
    color:#D0978C  
}
```

If you want to add a text shadow in that color use the text-shadow property, you can generate a text shadow directly with our [CSS Text Shadow Generator](#).

Here you see how black text with a 4 pixel #D0978C colored shadow looks like.

```
.shadow{ text-shadow: 4px 4px 2px #D0978C
}
```

Border

The CSS property to change the border of an element to Hex D0978C is called "border". The border property can be set on classes, ids or directly on the HTML element.

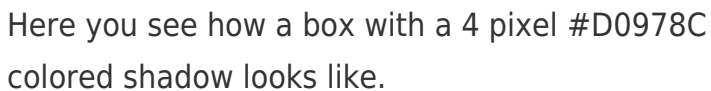
This example shows the color as border, it can be applied via the CSS property "border" or "border-color".

```
.border, #border, table{ border:4px solid
#D0978C }
```

If only the border color should be changed use the property `border-color`.

```
.border{ border-color:#D0978C }
```

If you want to add a box shadow in that color use:



Here you see how a box with a 4 pixel #D0978C colored shadow looks like.

```
.boxshadow{ -moz-box-shadow:4px 4px 4px  
4px #D0978C; -webkit-box-shadow:4px 4px  
4px 4px #D0978C; box-shadow:4px 4px 4px  
4px #D0978C }
```

Background

The CSS property to change the background color of an element to Hex D0978C is called "background". The background property can be set on classes, ids or directly on the HTML element.

```
.background, #background, body{  
background:#D0978C }
```

If only the background color should be changed can be used:

```
.background{ background-color:#D0978C }
```

This example shows the color as background, it is applied via the CSS property "background".

To optimize and compress your CSS code, you can use our [online CSS compressor and optimizer](#) based on csstidy. If you want to create a linear or radial gradient as background or border, check our [CSS Gradient Generator](#).

Hey! You found this booklet interesting? Support Converting Colors with the new Membership Option!

The pro membership hides all ads, plus gives you double the colors in the color bucket, and more awesome pro features!

[Learn more, Memberships starting at \\$2.50/m!](#)

**Follow me
on Twitter!**

@ConvertingColor