

# Converting Colors

Hex(D09D67)

Have a look what the booklet for  
Hex(D09D67) contains.

<b>Hex(D09D67)</b> .....	3
<b><i>Conversions</i></b> .....	4
<b><i>Details</i></b> .....	6
<b><i>Harmonies</i></b> .....	11
<b><i>Previews</i></b> .....	23
<b><i>Color Blindness Simulation</i></b> .....	26
<b><i>CSS Examples</i></b> .....	29

# **Color**

**Hex(D09D67)**

# Conversions

## Conversions Part 1

<b>Format</b>	<b>Color</b>
Hex	D09D67
RGB	208, 157, 103
RGB Percent	82%, 62%, 40%
CMY	0.1843, 0.3843, 0.5961
CMYK	0.00, 0.25, 0.50, 0.18
HSL	31°, 53%, 61%
HSV	31°, 50%, 82%
XYZ	40.5176, 38.5031, 18.1283
YIQ	166.0930, 47.7300, -5.9820

# Conversions

## Conversions Part 2

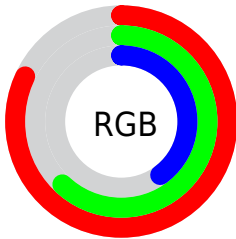
<b>Format</b>	<b>Color</b>
<b>R<sub>YB</sub></b>	202, 208, 103
Decimal	13671783
CIE <sub>Lab</sub>	68.39, 12.55, 35.47
CIE <sub>LCh</sub>	68, 37.630, 70.511
Yxy	38.5031, 0.4171, 0.3963
Android (android.graphics.Color)	4291861863 (0xFFD09D67)
YUV	166.0930, -31.1048, 36.7524
Hunter-Lab	62.0509, 7.9667, 26.1139

# Details

The Hex color **D09D67** is a light color, and the websafe version is hex **CC9966**. A complement of this color would be **679AD0**, and the grayscale version is **A6A6A6**.

A 20% lighter version of the original color is **FFD49B**, and **976A36** is the 20% darker color. If you saturate the color by 10%, you get **D09352**, and if you desaturate by 10%, it is **D0A77C**.

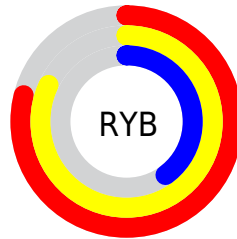
# Distribution



Red (82%)

Green (62%)

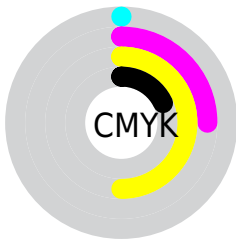
Blue (40%)



Red (79%)

Yellow (82%)

Blue (40%)

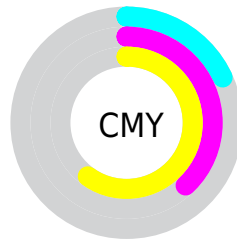


Cyan (0%)

Magenta (25%)

Yellow (50%)

Black (18%)



Cyan (18%)

Magenta (38%)

Yellow (60%)

# Brightness & Saturation Gradients

These gradients show how the Hex color D09D67 changes by changing the brightness by 10 percent. The first figure shows a shift by +10% for each color and the second figure -10%.

Similar to the brightness gradients but the following saturation gradients show a change of the Hex color D09D67 by changing the saturation by 10% instead.



 D09D67

 D09D67

FFFFFF

 B3834E

 FFD49B

 976A36

 FFF0B6

 7B521F

 FFFFD2

 603B07

 FFFFEE

 472500

 2D1100

 0E0000

 000000

 D09D67

 D09D67

 D09352

 D0A77C

 D0893D

 D0B191

 D07F29

 D0BBA5

 D07514

 D0C5BA

 D06B00

 D0D0CF

 D0DAE4

 D0E4F9

 D0EEFF

 D0F8FF

# Harmonies

## Analogous

The Analogous color harmony consists of three colors that are next to each other on the color wheel.



E4927C



D09D67



B1A963

# Triad

The Triadic color harmony groups three colors that are evenly spaced from another and form a triangle on the color wheel.



D09D67



2EB9B2



BA9ADB

# Complementary

The Complementary color scheme is a pair of colors which are on the opposite of each other on the color wheel.



D09D67



679AD0

# Split Complementary

Split-complementary colors differ from the complementary color scheme. The scheme consists of three colors, the original color and two neighbors of the complement color.



89A6E9



D09D67



09B7D2

# Square

The Square scheme is like the rectangle color scheme, but the four colors are evenly spaced on the color wheel.



D09D67



61B78F



4CB0E6



DB8FBE

# Rectangle

The Rectangle color scheme consists of four colors that form a rectangle on the color wheel.



D09D67



99AF6B



4CB0E6



AB9EE1

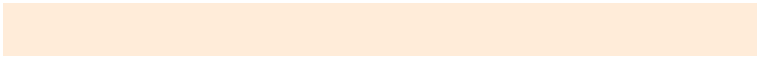


# Sweetspot

The Sweet Spot groups the original color and five complimentary colors.



D09D67



FFECD9



D0679C



807469



000000



808080



# Same Dimension

The Same Dimension uses a secret algorithm to generate beautiful new colors.



D09D67



FFB363



D0D067



69635E



A85700



291500



# Inverse Universe

The Inverse Universe completely reimagines the original color for something new.



679AD0



63AFFF



6767D0



5E6369



0052A8

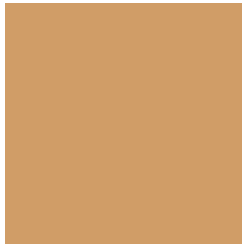


001429



# Previews

## White Background



This preview shows how the Hex color D09D67 looks on a white background.

## Color Contrast Check

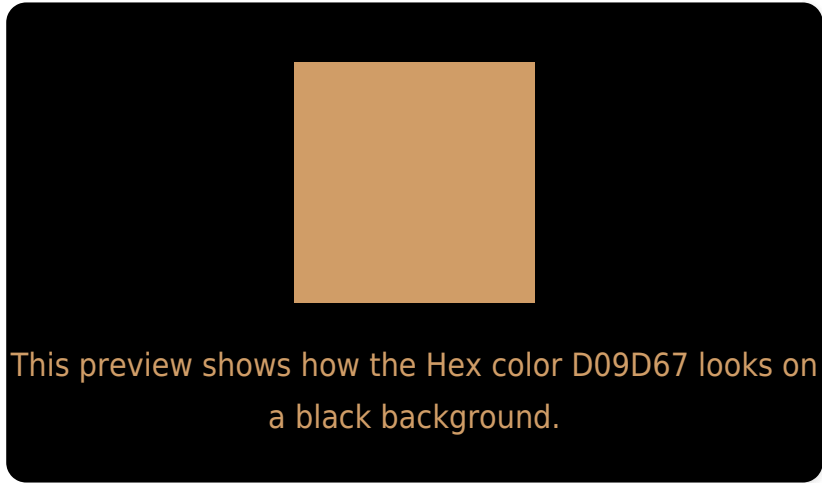
Large Text (above 18pt) WCAG AA × Fail

Any Text WCAG AA × Fail

Large Text (above 18pt) WCAG AAA × Fail

Any Text WCAG AAA × Fail

# Black Background



## Color Contrast Check

Large Text (above 18pt) WCAG AA ✓ Pass

Any Text WCAG AA ✓ Pass

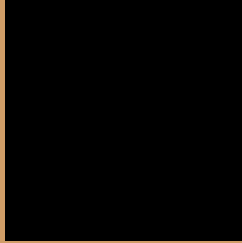
Large Text (above 18pt) WCAG AAA ✓ Pass

Any Text WCAG AAA ✓ Pass

If you want to check with other color combinations, try the [Color Contrast Checker](#).



## Hex D09D67 Background



This preview shows how black text looks on a background with the Hex color D09D67.



This preview shows how white text looks on a background with the Hex color D09D67.

# Color Blindness Simulation

Color vision deficiency is a very complex topic, and I could not describe the different causes any better than Wikipedia does, so if you want to learn more, you should check out their [article about color blindness](#).

## Dichromacy



**Original Color**  
D09D67

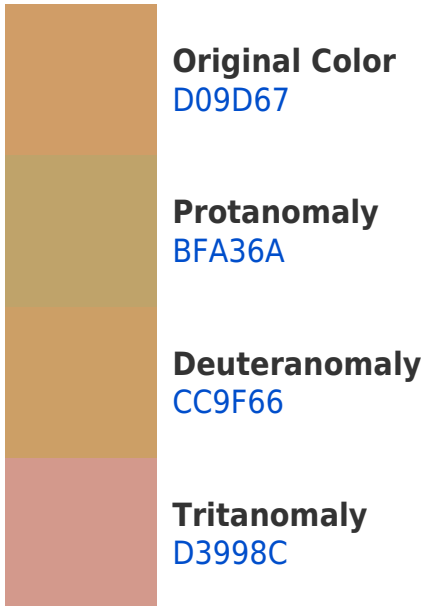
**Protanopia**  
B6A76B

**Deuteranopia**  
CAA066

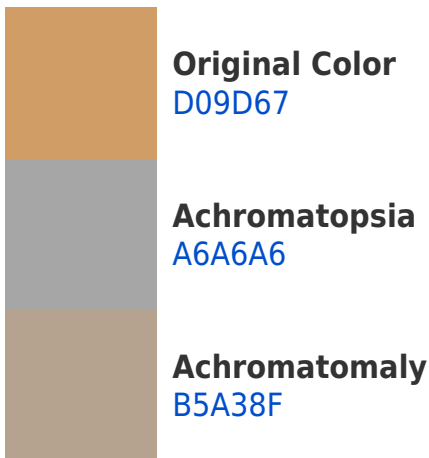


**Tritanopia**  
D596A1

# Trichromacy



# Monochromacy



# CSS Examples

## Text

The CSS property to change the color of the text to Hex D09D67 is called "color". The color property can be set on classes, ids or directly on the HTML element.

This example shows how text in the color #D09D67 looks like.

```
.text, #text, p{  
    color:#D09D67  
}
```

If you want to add a text shadow in that color use the text-shadow property, you can generate a text shadow directly with our [CSS Text Shadow Generator](#).

Here you see how black text with a 4 pixel #D09D67 colored shadow looks like.

```
.shadow{ text-shadow: 4px 4px 2px #D09D67
}
```

## Border

The CSS property to change the border of an element to Hex D09D67 is called "border". The border property can be set on classes, ids or directly on the HTML element.

This example shows the color as border, it can be applied via the CSS property "border" or "border-color".

```
.border, #border, table{ border:4px solid
#D09D67 }
```

If only the border color should be changed use the property border-color.

```
.border{ border-color:#D09D67 }
```

If you want to add a box shadow in that color use:

Here you see how a box with a 4 pixel #D09D67 colored shadow looks like.

```
.boxshadow{ -moz-box-shadow:4px 4px 4px  
4px #D09D67; -webkit-box-shadow:4px 4px  
4px 4px #D09D67; box-shadow:4px 4px 4px  
4px #D09D67 }
```

# Background

The CSS property to change the background color of an element to Hex D09D67 is called "background". The background property can be set on classes, ids or directly on the HTML element.

```
.background, #background, body{  
background:#D09D67 }
```

If only the background color should be changed can be used:

```
.background{ background-color:#D09D67 }
```

This example shows the color as background, it is applied via the CSS property "background".

To optimize and compress your CSS code, you can use our [online CSS compressor and optimizer](#) based on csstidy. If you want to create a linear or radial gradient as background or border, check our [CSS Gradient Generator](#).



Hey! You found this booklet interesting? Support Converting Colors with the new Membership Option!

The pro membership hides all ads, plus gives you double the colors in the color bucket, and more awesome pro features!

**[Learn more, Memberships starting at \\$2.50/m!](#)**

**Follow me  
on Twitter!**

@ConvertingColor