

# Converting Colors

Hex(D0A19C)

Have a look what the booklet for  
Hex(D0A19C) contains.

<b>Hex(D0A19C)</b> .....	3
<b><i>Conversions</i></b> .....	4
<b><i>Details</i></b> .....	6
<b><i>Harmonies</i></b> .....	11
<b><i>Previews</i></b> .....	23
<b><i>Color Blindness Simulation</i></b> .....	26
<b><i>CSS Examples</i></b> .....	29

# **Color**

**Hex(D0A19C)**

# Conversions

## Conversions Part 1

Format	Color
Hex	D0A19C
RGB	208, 161, 156
RGB Percent	82%, 63%, 61%
CMY	0.1843, 0.3686, 0.3882
CMYK	0.00, 0.23, 0.25, 0.18
HSL	6°, 36%, 71%
HSV	6°, 25%, 82%
XYZ	44.7580, 41.2999, 37.0652
YIQ	174.4830, 29.6170, 8.4090

# Conversions

## Conversions Part 2

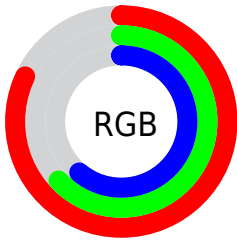
Format	Color
R <sub>Y</sub> B	208, 162, 156
Decimal	13672860
CIE Lab	70.39, 16.65, 9.29
CIE LCh	70, 19.065, 29.174
Yxy	41.2999, 0.3635, 0.3354
Android (android.graphics.Color)	4291862940 (0xFFD0A19C)
YUV	174.4830, -9.1121, 29.3944
Hunter-Lab	64.2650, 11.8544, 10.7897

# Details

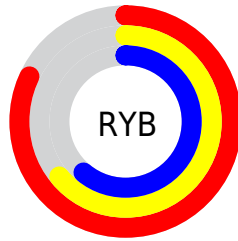
The Hex color **D0A19C** is a light color, and the websafe version is hex **CC9999**. A complement of this color would be **9CCBD0**, and the grayscale version is **AFAFAF**.

A 20% lighter version of the original color is **FFD8D2**, and **996D69** is the 20% darker color. If you saturate the color by 10%, you get **D08E87**, and if you desaturate by 10%, it is **D0B4B1**.

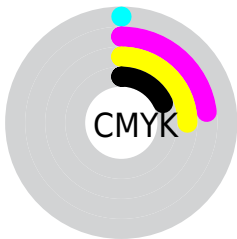
# Distribution



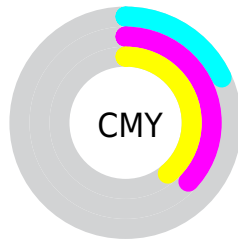
- Red (82%)
- Green (63%)
- Blue (61%)



- Red (82%)
- Yellow (64%)
- Blue (61%)



- Cyan (0%)
- Magenta (23%)
- Yellow (25%)
- Black (18%)



- Cyan (18%)
- Magenta (37%)
- Yellow (39%)

# Brightness & Saturation Gradients

These gradients show how the Hex color D0A19C changes by changing the brightness by 10 percent. The first figure shows a shift by +10% for each color and the second figure -10%.

Similar to the brightness gradients but the following saturation gradients show a change of the Hex color D0A19C by changing the saturation by 10% instead.



 D0A19C

 D0A19C

FFFFFF

 B48782

 FFD8D2

 996D69

 FFF4EF

 7E5551

 643D3A

 4B2724

 33120F

 1F0001

 000000

 D0A19C

 D0A19C

 D08E87

 D0B4B1

 D07B72

 D0C7C6

 D0695E

 D0D9DA

 D05649

 D0ECEF

 D04334

 D0FFFF

 D0301F

 D01D0A

 D01400

# Harmonies

## Analogous

The Analogous color harmony consists of three colors that are next to each other on the color wheel.



CEA0AD



D0A19C



C9A58F

# Triad

The Triadic color harmony groups three colors that are evenly spaced from another and form a triangle on the color wheel.



D0A19C



93B49A



98AECE

# Complementary

The Complementary color scheme is a pair of colors which are on the opposite of each other on the color wheel.



D0A19C



9CCBD0

# Split Complementary

Split-complementary colors differ from the complementary color scheme. The scheme consists of three colors, the original color and two neighbors of the complement color.



85B3C9



D0A19C



83B6AB

# Square

The Square scheme is like the rectangle color scheme, but the four colors are evenly spaced on the color wheel.



D0A19C



A7B08E



7DB6BC



AFA8CA

# Rectangle

The Rectangle color scheme consists of four colors that form a rectangle on the color wheel.



D0A19C



C0A98A



7DB6BC



90B0CE

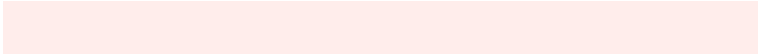


# Sweetspot

The Sweet Spot groups the original color and five complimentary colors.



D0A19C



FFEDEB



D09CCC



807473



000000



808080



# Same Dimension

The Same Dimension uses a secret algorithm to generate beautiful new colors.



D0A19C



FFBAB3



D0BA9C



695F5E



A81000



290400



# Inverse Universe

The Inverse Universe completely reimagines the original color for something new.



9CCBD0



B3F8FF



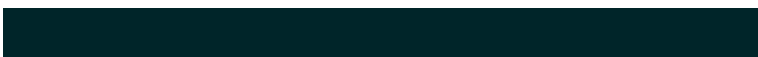
9CB2D0



5E6869



0098A8

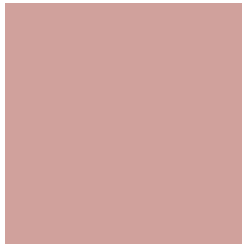


002529



# Previews

## White Background



This preview shows how the Hex color D0A19C looks on a white background.

## Color Contrast Check

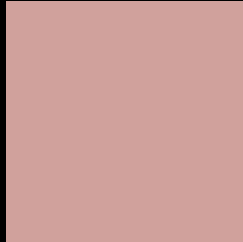
Large Text (above 18pt) WCAG AA × Fail

Any Text WCAG AA × Fail

Large Text (above 18pt) WCAG AAA × Fail

Any Text WCAG AAA × Fail

# Black Background



This preview shows how the Hex color D0A19C looks on a black background.

## Color Contrast Check

Large Text (above 18pt) WCAG AA ✓ Pass

Any Text WCAG AA ✓ Pass

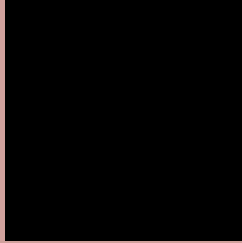
Large Text (above 18pt) WCAG AAA ✓ Pass

Any Text WCAG AAA ✓ Pass

If you want to check with other color combinations, try the [Color Contrast Checker](#).



## Hex D0A19C Background



This preview shows how black text looks on a background with the Hex color D0A19C.

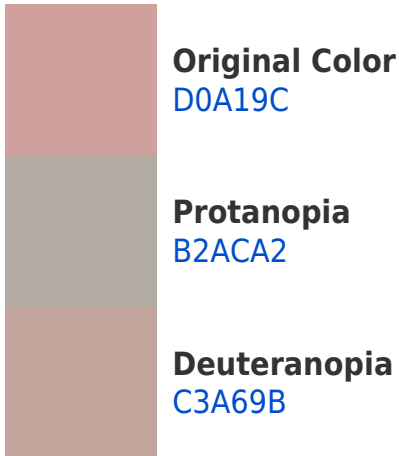



This preview shows how white text looks on a background with the Hex color D0A19C.

# Color Blindness Simulation

Color vision deficiency is a very complex topic, and I could not describe the different causes any better than Wikipedia does, so if you want to learn more, you should check out their [article about color blindness](#).

## Dichromacy





**Tritanopia**  
D29FAB

# Trichromacy



**Original Color**  
D0A19C

**Protanomaly**  
BDA8A0

**Deuteranomaly**  
C8A49B

**Tritanomaly**  
D1A0A6

# Monochromacy



**Original Color**  
D0A19C

**Achromatopsia**  
AEAEAE

**Achromatomaly**  
BAA9A7

# CSS Examples

## Text

The CSS property to change the color of the text to Hex D0A19C is called "color". The color property can be set on classes, ids or directly on the HTML element.

This example shows how text in the color #D0A19C looks like.

```
.text, #text, p{  
    color:#D0A19C  
}
```

If you want to add a text shadow in that color use the text-shadow property, you can generate a text shadow directly with our [CSS Text Shadow Generator](#).

Here you see how black text with a 4 pixel #D0A19C colored shadow looks like.

```
.shadow{ text-shadow: 4px 4px 2px #D0A19C  
}
```

## Border

The CSS property to change the border of an element to Hex D0A19C is called "border". The border property can be set on classes, ids or directly on the HTML element.

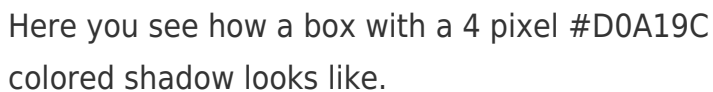
This example shows the color as border, it can be applied via the CSS property "border" or "border-color".

```
.border, #border, table{ border:4px solid  
#D0A19C }
```

If only the border color should be changed use the property `border-color`.

```
.border{ border-color:#D0A19C }
```

If you want to add a box shadow in that color use:



Here you see how a box with a 4 pixel #D0A19C colored shadow looks like.

```
.boxshadow{ -moz-box-shadow:4px 4px 4px  
4px #D0A19C; -webkit-box-shadow:4px 4px  
4px 4px #D0A19C; box-shadow:4px 4px 4px  
4px #D0A19C }
```

# Background

The CSS property to change the background color of an element to Hex D0A19C is called "background". The background property can be set on classes, ids or directly on the HTML element.

```
.background, #background, body{  
background:#D0A19C }
```

If only the background color should be changed can be used:

```
.background{ background-color:#D0A19C }
```

This example shows the color as background, it is applied via the CSS property "background".

To optimize and compress your CSS code, you can use our [online CSS compressor and optimizer](#) based on csstidy. If you want to create a linear or radial gradient as background or border, check our [CSS Gradient Generator](#).



Hey! You found this booklet interesting? Support Converting Colors with the new Membership Option!

The pro membership hides all ads, plus gives you double the colors in the color bucket, and more awesome pro features!

**[Learn more, Memberships starting at \\$2.50/m!](#)**

**Follow me  
on Twitter!**

@ConvertingColor