

Converting Colors

Hex(D0A396)

Have a look what the booklet for
Hex(D0A396) contains.

Hex(D0A396)	3
<i>Conversions</i>	4
<i>Details</i>	6
<i>Harmonies</i>	11
<i>Previews</i>	23
<i>Color Blindness Simulation</i>	26
<i>CSS Examples</i>	29

Color

Hex(D0A396)

Conversions

Conversions Part 1

Format	Color
Hex	D0A396
RGB	208, 163, 150
RGB Percent	82%, 64%, 59%
CMY	0.1843, 0.3608, 0.4118
CMYK	0.00, 0.22, 0.28, 0.18
HSL	13°, 38%, 70%
HSV	13°, 28%, 82%
XYZ	44.6146, 41.8063, 34.5721
YIQ	174.9730, 30.9930, 5.4970

Conversions

Conversions Part 2

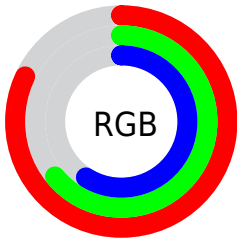
Format	Color
R _Y B	208, 167, 150
Decimal	13673366
CIE Lab	70.74, 14.72, 13.10
CIE LCh	71, 19.704, 41.684
Yxy	41.8063, 0.3687, 0.3455
Android (android.graphics.Color)	4291863446 (0xFFD0A396)
YUV	174.9730, -12.3117, 28.9647
Hunter-Lab	64.6578, 10.0160, 13.5584

Details

The Hex color **D0A396** is a light color, and the websafe version is hex **CC9999**. A complement of this color would be **96C3D0**, and the grayscale version is **AFAFAF**.

A 20% lighter version of the original color is **FFDACC**, and **996F63** is the 20% darker color. If you saturate the color by 10%, you get **D09381**, and if you desaturate by 10%, it is **D0B3AB**.

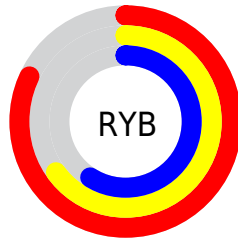
Distribution



Red (82%)

Green (64%)

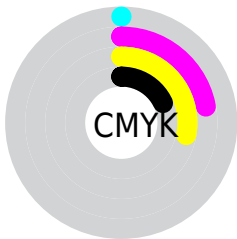
Blue (59%)



Red (82%)

Yellow (65%)

Blue (59%)

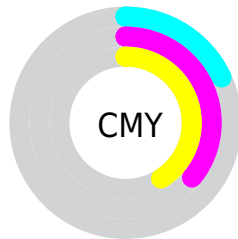


Cyan (0%)

Magenta (22%)

Yellow (28%)

Black (18%)



Cyan (18%)

Magenta (36%)

Yellow (41%)

Brightness & Saturation Gradients

These gradients show how the Hex color D0A396 changes by changing the brightness by 10 percent. The first figure shows a shift by +10% for each color and the second figure -10%.

Similar to the brightness gradients but the following saturation gradients show a change of the Hex color D0A396 by changing the saturation by 10% instead.

 D0A396

 D0A396

FFFFFF

 B4897C

 FFDACC

 996F63

 FFF7E8

 7E574B

 643F35

 4B291F

 331408

 1E0000

 000000

 D0A396

 D0A396

 D09381

 D0B3AB

 D0836C

 D0C3C0

 D07358

 D0D3D4

 D06243

 D0E4E9

 D0522E

 D0F4FE

 D04219

 D0FFFF

 D03204

 D02F00

Harmonies

Analogous

The Analogous color harmony consists of three colors that are next to each other on the color wheel.



D2A0A7



D0A396



C5A88B

Triad

The Triadic color harmony groups three colors that are evenly spaced from another and form a triangle on the color wheel.



D0A396



8CB7A1



A2ACD0

Complementary

The Complementary color scheme is a pair of colors which are on the opposite of each other on the color wheel.



D0A396



96C3D0

Split Complementary

Split-complementary colors differ from the complementary color scheme. The scheme consists of three colors, the original color and two neighbors of the complement color.



8BB2CF



D0A396



7EB7B4

Square

The Square scheme is like the rectangle color scheme, but the four colors are evenly spaced on the color wheel.



D0A396



9FB392



7EB6C4



B9A6C8

Rectangle

The Rectangle color scheme consists of four colors that form a rectangle on the color wheel.



D0A396



BAAC89



7EB6C4



9AAED1

Sweetspot

The Sweet Spot groups the original color and five complimentary colors.



D0A396



FFEFE8



D096C3



807673



000000



808080

Same Dimension

The Same Dimension uses a secret algorithm to generate beautiful new colors.



D0A396



FFBEAB



D0C096



69605E



A82600



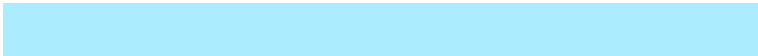
290900

Inverse Universe

The Inverse Universe completely reimagines the original color for something new.



96C3D0



ABECFF



96A6D0



5E6669



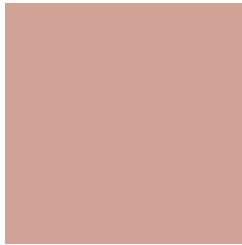
0083A8



002029

Previews

White Background



This preview shows how the Hex color D0A396 looks on a white background.

Color Contrast Check

Large Text (above 18pt) WCAG AA × Fail

Any Text WCAG AA × Fail

Large Text (above 18pt) WCAG AAA × Fail

Any Text WCAG AAA × Fail

Black Background



This preview shows how the Hex color D0A396 looks on a black background.

Color Contrast Check

Large Text (above 18pt) WCAG AA ✓ Pass

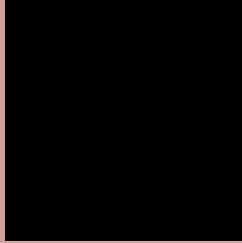
Any Text WCAG AA ✓ Pass

Large Text (above 18pt) WCAG AAA ✓ Pass

Any Text WCAG AAA ✓ Pass

If you want to check with other color combinations, try the [Color Contrast Checker](#).

Hex D0A396 Background



This preview shows how black text looks on a background with the Hex color D0A396.

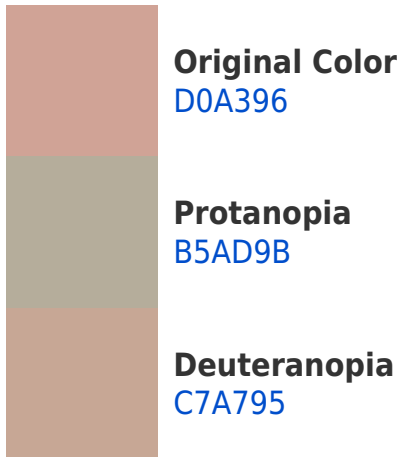


This preview shows how white text looks on a background with the Hex color D0A396.

Color Blindness Simulation

Color vision deficiency is a very complex topic, and I could not describe the different causes any better than Wikipedia does, so if you want to learn more, you should check out their [article about color blindness](#).

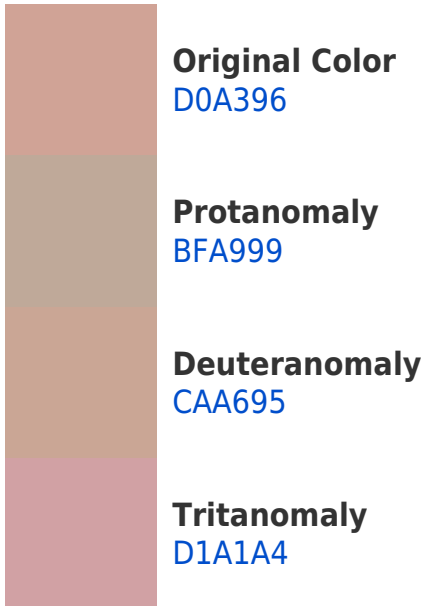
Dichromacy



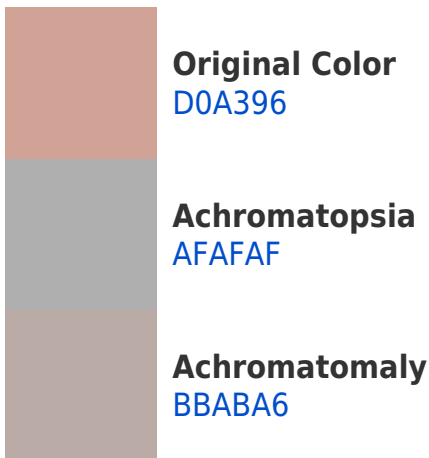


Tritanopia
D2A0AC

Trichromacy



Monochromacy



CSS Examples

Text

The CSS property to change the color of the text to Hex D0A396 is called "color". The color property can be set on classes, ids or directly on the HTML element.

This example shows how text in the color #D0A396 looks like.

```
.text, #text, p{  
    color:#D0A396  
}
```

If you want to add a text shadow in that color use the text-shadow property, you can generate a text shadow directly with our [CSS Text Shadow Generator](#).

Here you see how black text with a 4 pixel #D0A396 colored shadow looks like.

```
.shadow{ text-shadow: 4px 4px 2px #D0A396
}
```

Border

The CSS property to change the border of an element to Hex D0A396 is called "border". The border property can be set on classes, ids or directly on the HTML element.

This example shows the color as border, it can be applied via the CSS property "border" or "border-color".

```
.border, #border, table{ border:4px solid
#D0A396 }
```

If only the border color should be changed use the property `border-color`.

```
.border{ border-color:#D0A396 }
```

If you want to add a box shadow in that color use:

Here you see how a box with a 4 pixel #D0A396 colored shadow looks like.

```
.boxshadow{ -moz-box-shadow:4px 4px 4px  
4px #D0A396; -webkit-box-shadow:4px 4px  
4px 4px #D0A396; box-shadow:4px 4px 4px  
4px #D0A396 }
```

Background

The CSS property to change the background color of an element to Hex D0A396 is called "background". The background property can be set on classes, ids or directly on the HTML element.

```
.background, #background, body{  
background:#D0A396 }
```

If only the background color should be changed can be used:

```
.background{ background-color:#D0A396 }
```

This example shows the color as background, it is applied via the CSS property "background".

To optimize and compress your CSS code, you can use our [online CSS compressor and optimizer](#) based on csstidy. If you want to create a linear or radial gradient as background or border, check our [CSS Gradient Generator](#).

Hey! You found this booklet interesting? Support Converting Colors with the new Membership Option!

The pro membership hides all ads, plus gives you double the colors in the color bucket, and more awesome pro features!

[Learn more, Memberships starting at \\$2.50/m!](#)

**Follow me
on Twitter!**

@ConvertingColor