

# Converting Colors

Hex(D0A3A5)

Have a look what the booklet for  
Hex(D0A3A5) contains.

<b>Hex(D0A3A5)</b> .....	3
<i><b>Conversions</b></i> .....	4
<i><b>Details</b></i> .....	6
<i><b>Harmonies</b></i> .....	11
<i><b>Previews</b></i> .....	23
<i><b>Color Blindness Simulation</b></i> .....	26
<i><b>CSS Examples</b></i> .....	29

# **Color**

**Hex(D0A3A5)**

# Conversions

## Conversions Part 1

Format	Color
Hex	D0A3A5
RGB	208, 163, 165
RGB Percent	82%, 64%, 65%
CMY	0.1843, 0.3608, 0.3529
CMYK	0.00, 0.22, 0.21, 0.18
HSL	357°, 32%, 73%
HSV	357°, 22%, 82%
XYZ	45.9011, 42.3209, 41.3468
YIQ	176.6830, 26.1780, 10.1620

# Conversions

## Conversions Part 2

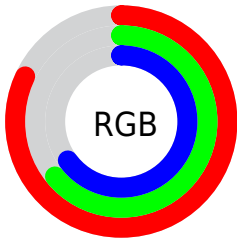
Format	Color
R <sub>Y</sub> B	208, 163, 165
Decimal	13673381
CIE Lab	71.09, 16.89, 5.33
CIE LCh	71, 17.708, 17.512
Yxy	42.3209, 0.3543, 0.3266
Android (android.graphics.Color)	4291863461 (0xFFD0A3A5)
YUV	176.6830, -5.7597, 27.4650
Hunter-Lab	65.0545, 12.1006, 7.8551

# Details

The Hex color **D0A3A5** is a light color, and the websafe version is hex **CC9999**. A complement of this color would be **A3D0CE**, and the grayscale version is **B1B1B1**.

A 20% lighter version of the original color is **FFDADC**, and **996F71** is the 20% darker color. If you saturate the color by 10%, you get **D08E91**, and if you desaturate by 10%, it is **D0B8B9**.

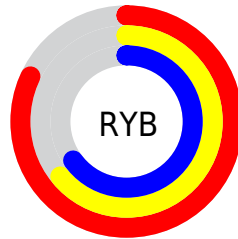
# Distribution



Red (82%)

Green (64%)

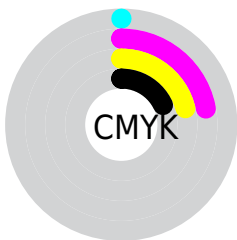
Blue (65%)



Red (82%)

Yellow (64%)

Blue (65%)

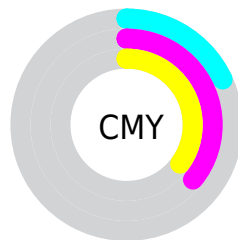


Cyan (0%)

Magenta (22%)

Yellow (21%)

Black (18%)



Cyan (18%)

Magenta (36%)

Yellow (35%)

# Brightness & Saturation Gradients

These gradients show how the Hex color D0A3A5 changes by changing the brightness by 10 percent. The first figure shows a shift by +10% for each color and the second figure -10%.

Similar to the brightness gradients but the following saturation gradients show a change of the Hex color D0A3A5 by changing the saturation by 10% instead.



 D0A3A5

 D0A3A5

FFFFFF

 B4898B

 FFDADC

 996F71

 FFF7F8

 7E5759

 653F41

 4C292B

 341317

 210000

 000000

 D0A3A5

 D0A3A5

 D08E91

 D0B8B9

 D0797D

 D0CDCD

 D06569

 D0E1E1

 D05055

 D0F6F5

 D03B42

 D0FFFF

 D0262E

 D0111A

 D00009

# Harmonies

## Analogous

The Analogous color harmony consists of three colors that are next to each other on the color wheel.



CAA3B5



D0A3A5



CCA697

# Triad

The Triadic color harmony groups three colors that are evenly spaced from another and form a triangle on the color wheel.



D0A3A5



9EB498



94B2CD

# Complementary

The Complementary color scheme is a pair of colors which are on the opposite of each other on the color wheel.



D0A3A5



A3D0CE

# Split Complementary

Split-complementary colors differ from the complementary color scheme. The scheme consists of three colors, the original color and two neighbors of the complement color.



86B5C5



D0A3A5



8DB7A6

# Square

The Square scheme is like the rectangle color scheme, but the four colors are evenly spaced on the color wheel.



D0A3A5



B1B08F



84B7B7



A8ACCD

# Rectangle

The Rectangle color scheme consists of four colors that form a rectangle on the color wheel.



D0A3A5



C6A991



84B7B7



8EB3CB



# Sweetspot

The Sweet Spot groups the original color and five complimentary colors.



D0A3A5



FFF0F0



CEA3D0



807777



000000



808080



# Same Dimension

The Same Dimension uses a secret algorithm to generate beautiful new colors.



D0A3A5



FFBDC0



D0B7A3



695E5F



A80007



290002



# Inverse Universe

The Inverse Universe completely reimagines the original color for something new.



D0A3A5



FFBDC0



A3BCD0



695E5F



A80007

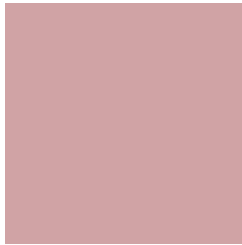


290002



# Previews

## White Background



This preview shows how the Hex color D0A3A5 looks on a white background.

## Color Contrast Check

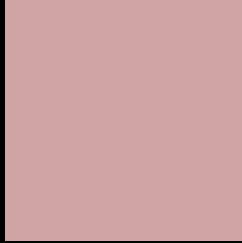
Large Text (above 18pt) WCAG AA × Fail

Any Text WCAG AA × Fail

Large Text (above 18pt) WCAG AAA × Fail

Any Text WCAG AAA × Fail

# Black Background



This preview shows how the Hex color D0A3A5 looks on a black background.

## Color Contrast Check

Large Text (above 18pt) WCAG AA ✓ Pass

Any Text WCAG AA ✓ Pass

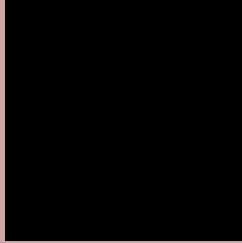
Large Text (above 18pt) WCAG AAA ✓ Pass

Any Text WCAG AAA ✓ Pass

If you want to check with other color combinations, try the [Color Contrast Checker](#).



## Hex D0A3A5 Background



This preview shows how black text looks on a background with the Hex color D0A3A5.



This preview shows how white text looks on a background with the Hex color D0A3A5.

# Color Blindness Simulation

Color vision deficiency is a very complex topic, and I could not describe the different causes any better than Wikipedia does, so if you want to learn more, you should check out their [article about color blindness](#).

## Dichromacy



**Original Color**  
D0A3A5

**Protanopia**  
B2ADAB

**Deuteranopia**  
C3A8A4



**Tritanopia**  
D1A2AE

# Trichromacy



**Original Color**  
D0A3A5

**Protanomaly**  
BDA9A9

**Deuteranomaly**  
C8A6A4

**Tritanomaly**  
D1A2AB

# Monochromacy



**Original Color**  
D0A3A5

**Achromatopsia**  
B1B1B1

**Achromatomaly**  
BCACAD

# CSS Examples

## Text

The CSS property to change the color of the text to Hex D0A3A5 is called "color". The color property can be set on classes, ids or directly on the HTML element.

This example shows how text in the color #D0A3A5 looks like.

```
.text, #text, p{  
    color:#D0A3A5  
}
```

If you want to add a text shadow in that color use the text-shadow property, you can generate a text shadow directly with our [CSS Text Shadow Generator](#).

Here you see how black text with a 4 pixel #D0A3A5 colored shadow looks like.

```
.shadow{ text-shadow: 4px 4px 2px #D0A3A5
}
```

## Border

The CSS property to change the border of an element to Hex D0A3A5 is called "border". The border property can be set on classes, ids or directly on the HTML element.

This example shows the color as border, it can be applied via the CSS property "border" or "border-color".

```
.border, #border, table{ border:4px solid
#D0A3A5 }
```

If only the border color should be changed use the property `border-color`.

```
.border{ border-color:#D0A3A5 }
```

If you want to add a box shadow in that color use:

Here you see how a box with a 4 pixel #D0A3A5 colored shadow looks like.

```
.boxshadow{ -moz-box-shadow:4px 4px 4px  
4px #D0A3A5; -webkit-box-shadow:4px 4px  
4px 4px #D0A3A5; box-shadow:4px 4px 4px  
4px #D0A3A5 }
```

# Background

The CSS property to change the background color of an element to Hex D0A3A5 is called "background". The background property can be set on classes, ids or directly on the HTML element.

```
.background, #background, body{  
background:#D0A3A5 }
```

If only the background color should be changed can be used:

```
.background{ background-color:#D0A3A5 }
```

This example shows the color as background, it is applied via the CSS property "background".

To optimize and compress your CSS code, you can use our [online CSS compressor and optimizer](#) based on csstidy. If you want to create a linear or radial gradient as background or border, check our [CSS Gradient Generator](#).



Hey! You found this booklet interesting? Support Converting Colors with the new Membership Option!

The pro membership hides all ads, plus gives you double the colors in the color bucket, and more awesome pro features!

**[Learn more, Memberships starting at \\$2.50/m!](#)**

**Follow me  
on Twitter!**

@ConvertingColor